

MIDTOWN

NEW YORK  
NY

# 142 WEST 57TH STREET



CONCEPTUAL RENDERING

# SPACE DETAILS

## LOCATION

South block between Sixth and Seventh Avenues

## APPROXIMATE SIZE

Ground Floor 1,484 SF

## CEILING HEIGHT

12 FT

## FRONTAGE

24 FT on West 57th Street

## POSSESSION

Immediate

## SITE STATUS

Formerly Starbucks

## NEIGHBORS

Carnegie Hall, Nordstrom, The Russian Tea Room, Quality Italian, The Wayfarer, Rue 57 and BVLGARI

## COMMENTS

Stunning location at the base of the Metropolitan Tower, a prestigious office and luxury residential building

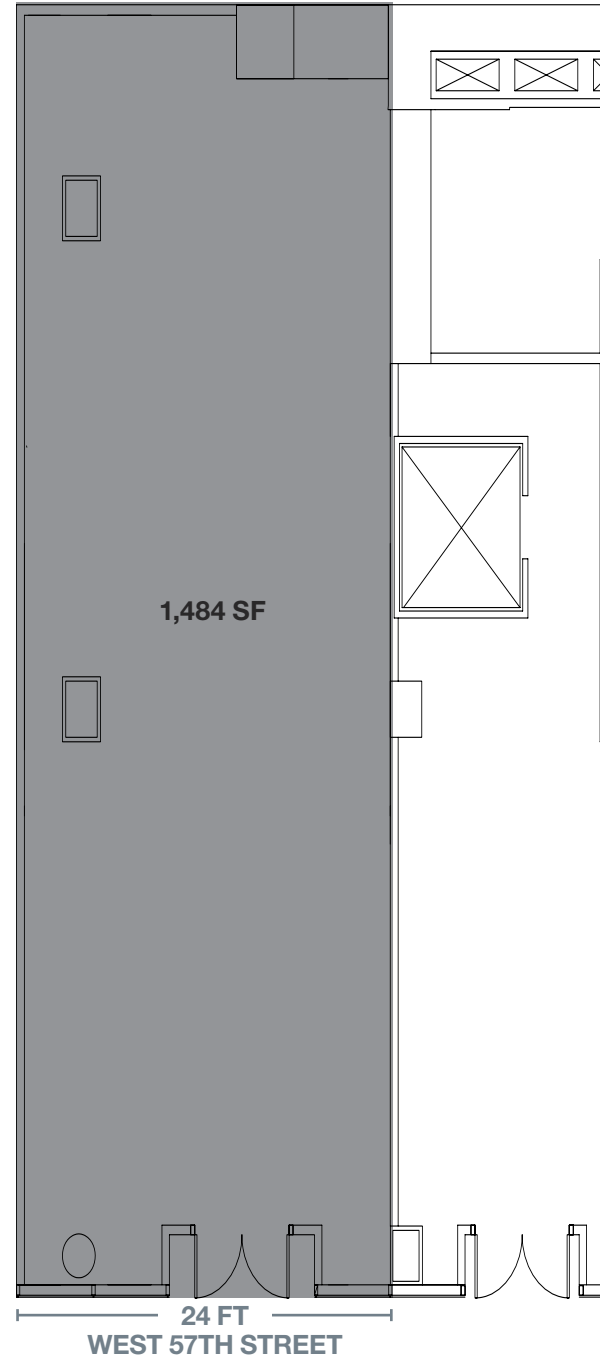
In the heart of Billionaires' Row, surrounded by the world's most luxurious residential developments including: Extell's One57, 111 W 57TH, 432 Park and Central Park Tower

Steps from numerous five-star hotels including: The Viceroy, Park Hyatt, Le Parker Meridien and The Quin

All non-vented food uses considered

Steps from the **F N Q R W** subway lines

## GROUND FLOOR



# AREA NEIGHBORS



## CONTACT EXCLUSIVE AGENT

**HARRISON ABRAMOWITZ**

212.372.2467

habramowitz@ngkf.com



NGKF.COM

