

# PRIME ENCINO OFFICE & MEDICAL SPACE AVAILABLE

ENCINO TOWER  
17835 Ventura Boulevard  
Encino, CA

17835

**PAULETTE TOUMAZOS**

Principal  
818.933.0346  
ptoumazos@lee-re.com  
License ID #00930676

**JENNIFER DONALDSON**

Principal  
818.933.0347  
jdonaldson@lee-re.com  
License ID #01317737



**LEE &  
ASSOCIATES**

COMMERCIAL REAL ESTATE SERVICES



# ENCINO TOWER

**LOCATION:** 17835 Ventura Boulevard  
Encino, California

**LEASE RATE:** **Office:** \$2.65/RSF FSG  
**Medical:** Negotiable

**PARKING:** 2.5/1,000  
\$60/month per space

## AVAILABILITY

**SUITE 103:** 900 RSF

**SUITE 210:** 3,867 RSF (Divisible)

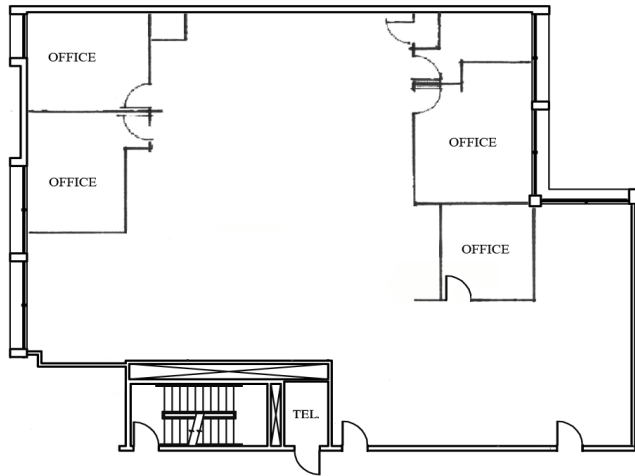
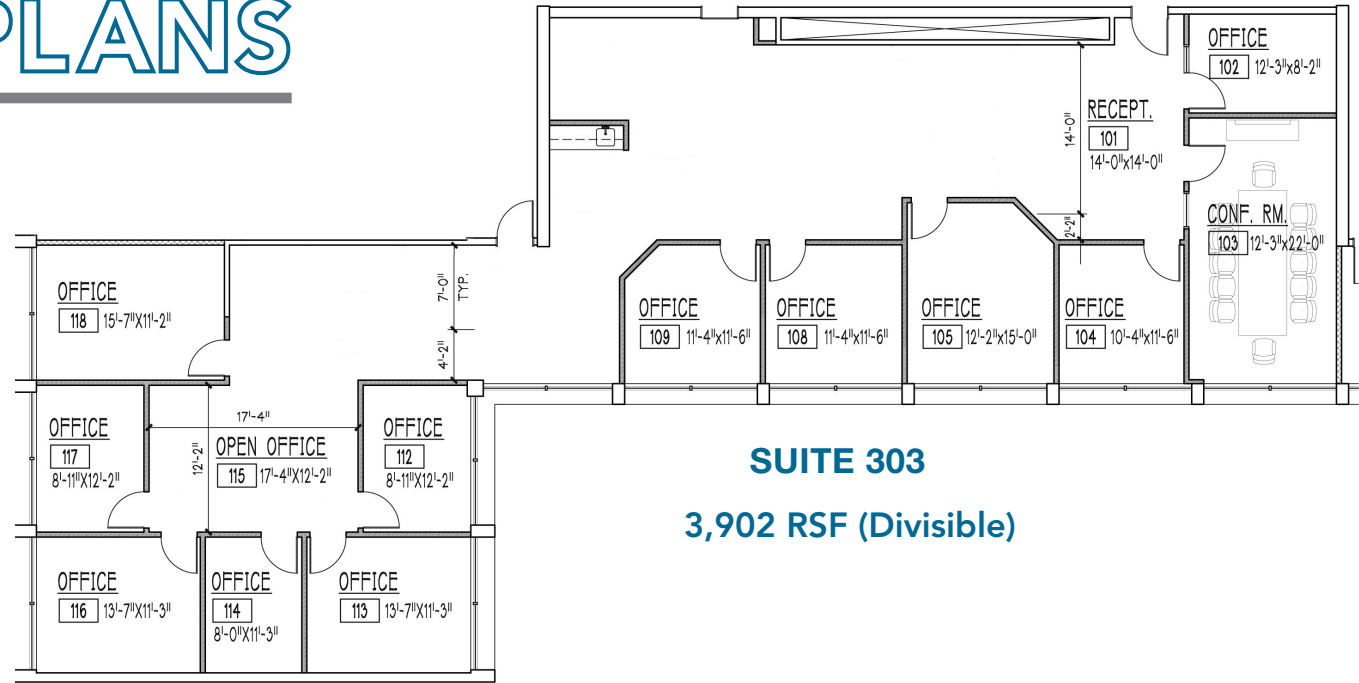
**SUITE 303:** 3,902 RSF (Divisible)

## HIGHLIGHTS

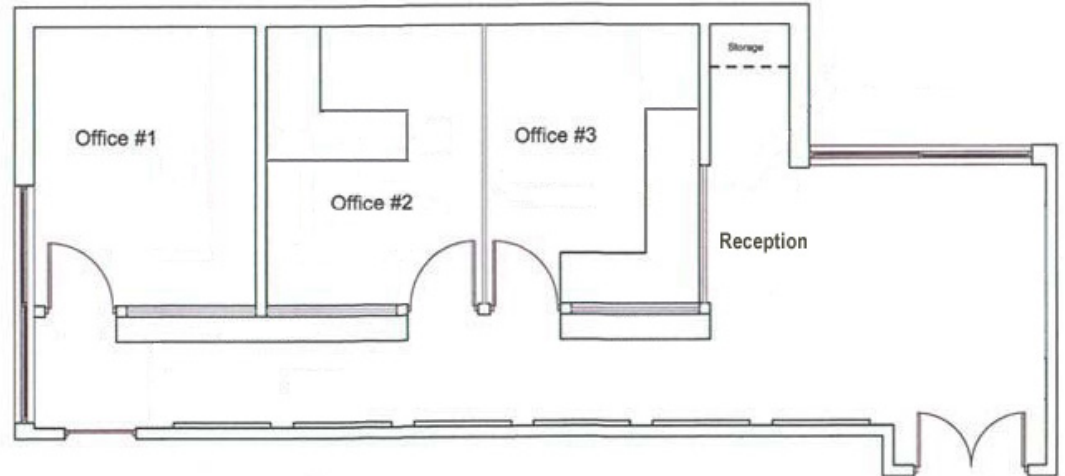
- Convenient Parking
- Within Walking Distance to Restaurants, Banks & Shopping
- Excellent Access to 101 Ventura Freeway
- Professional Property Management



# FLOOR PLANS



**SUITE 210**  
3,867 RSF (Divisible)



**SUITE 103**  
900 RSF



# AMENITIES

## ENCINO TOWER



17835 Ventura Boulevard  
Encino, CA



BevMo!



Ralphs



Ventura Fwy (US 101)



Buca di BEPPO

Ventura Blvd

White Oak Ave

CVS pharmacy



usbank



LA FITNESS

BED BATH & BEYOND



SUBWAY

menchie's frozen yogurt



T-Mobile

Michaels  
Where Creativity Happens  
Yogurtland

WELLS FARGO

For more information, please contact:

**PAULETTE TOUMAZOS**

Principal

818.933.0346

ptoumazos@lee-re.com

License ID #00930676

**JENNIFER DONALDSON**

Principal

818.933.0347

jdonaldson@lee-re.com

License ID #01317737

**LEE & ASSOCIATES**

COMMERCIAL REAL ESTATE SERVICES

Lee & Associates® - LA North/Ventura, Inc. • CID #01191898  
A Member of the Lee & Associates® Group of Companies  
15250 Ventura Blvd., Suite 100, Sherman Oaks, CA 91403  
P:818.986.9800 F:818.783.9260 • www.lee-associates.com

No warranty or representation is made to the accuracy of the foregoing information. Terms of sale or lease and availability are subject to change or withdrawal without notice.