



**3,462 RSF**

---

**Sublease** Term Through July, 2021

---

— **1833** —  
**CENTINELA**

**Rate** Negotiable

---

— SANTA MONICA, CA —

Brand new construction with creative finishes. High ceilings, concrete floors, kitchenette and restrooms. 4 interior glass offices and large open bullpen. Direct access to outdoor patio and 3/1000 surface parking.

*For more information please contact:*

**SCOTT MENKUS**

(310)-595-2211

scott.menkus@cushwake.com

Lic. #01476553

**ERIC DUNCANSON**

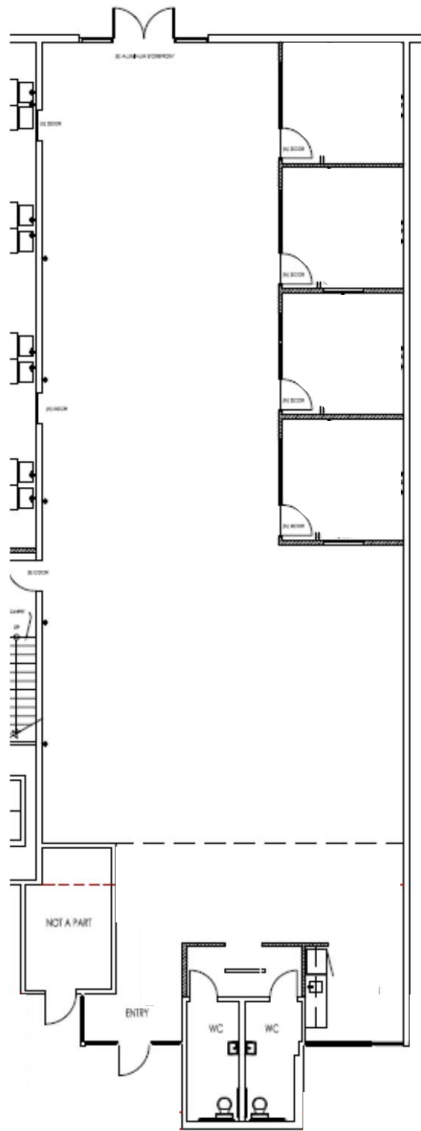
(213)-629-6522

eric.duncanson@cushwake.com

Lic. #00999249



Cushman & Wakefield of California, Inc  
10250 Constellation Boulevard, Suite 2200  
Los Angeles, CA 90067



Centinela Avenue



For more information please contact:

**SCOTT MENKUS**

(310)-595-2211

scott.menkus@cushwake.com

Lic. #01476553

**ERIC DUNCANSON**

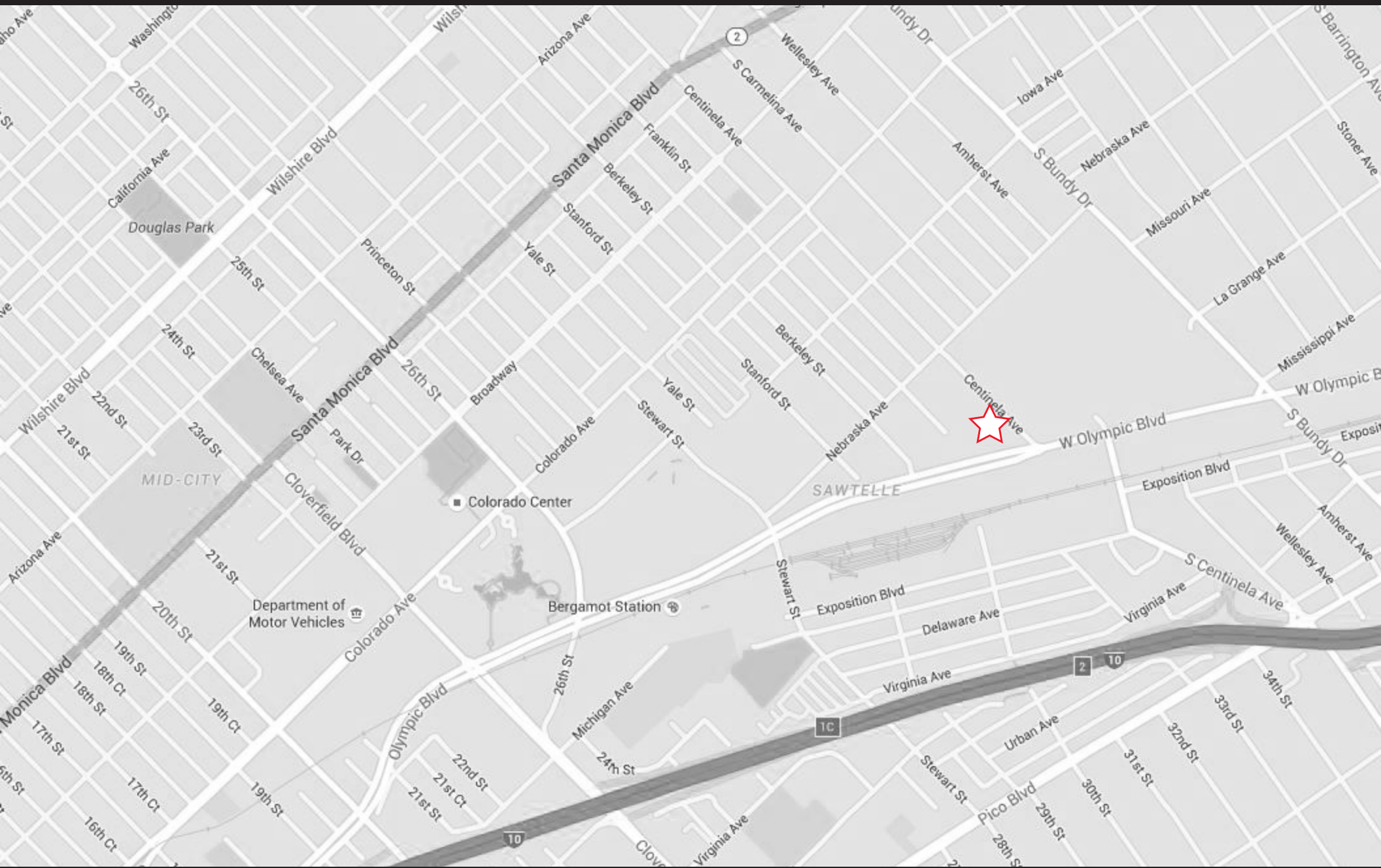
(213)-629-6522

eric.duncanson@cushwake.com

Lic. #00999249



Cushman & Wakefield of California, Inc  
10250 Constellation Boulevard, Suite 2200  
Los Angeles, CA 90067



For more information please contact:

**SCOTT MENKUS**

(310)-595-2211

scott.menkus@cushwake.com

Lic. #01476553

**ERIC DUNCANSON**

(213)-629-6522

eric.duncanson@cushwake.com

Lic. #00999249



Cushman & Wakefield of California, Inc  
10250 Constellation Boulevard, Suite 2200  
Los Angeles, CA 90067