

For Lease

2001 - 2007 Exchange Drive, Arlington, TX 76011 ± 98,560 - 147,840 SF AVAILABLE



PROPERTY OVERVIEW

County: Tarrant
Market: Arlington Industrial
Sub Market: Great Southwest / Arlington Industrial

BUILDING DATA

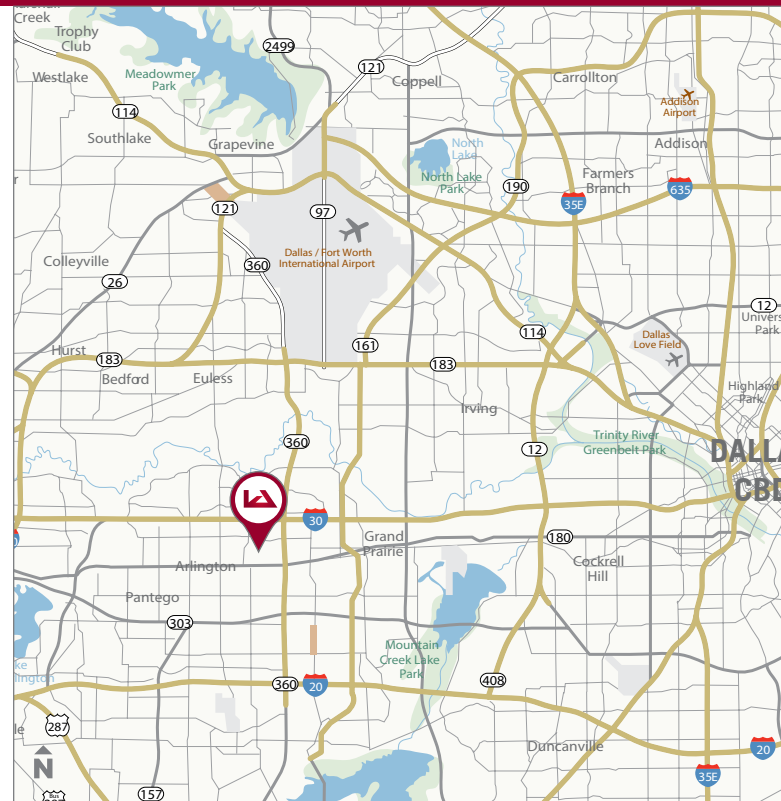
Total Building SF: 147,840 SF
Clear Height: 23'
Sprinklered: Yes
Column Spacing: 27'6" x 56'0"

LISTING DATA

Available SF: ± 98,560 SF
Office Size: ± 5,689 SF
Warehouse Size: ± 92,871 SF
Total Contiguous: 147,840 SF
Loading Docks: 37 Dock High Doors with 26 Levelers
Comments: Functional distribution space near AT&T Stadium. Centrally located in DFW near I-30 and Hwy. 360. Tenant will need to verify rail service availability.

ECONOMIC DATA

Lease Rate: Negotiable
Operating Expenses: \$0.99/SF



Owned By:



For more information contact:

Mark Graybill, Principal
mgraybill@lee-associates.com
D 972.934.4007

Colton Rhodes, Associate
crhodes@lee-associates.com
D 972.934.4017

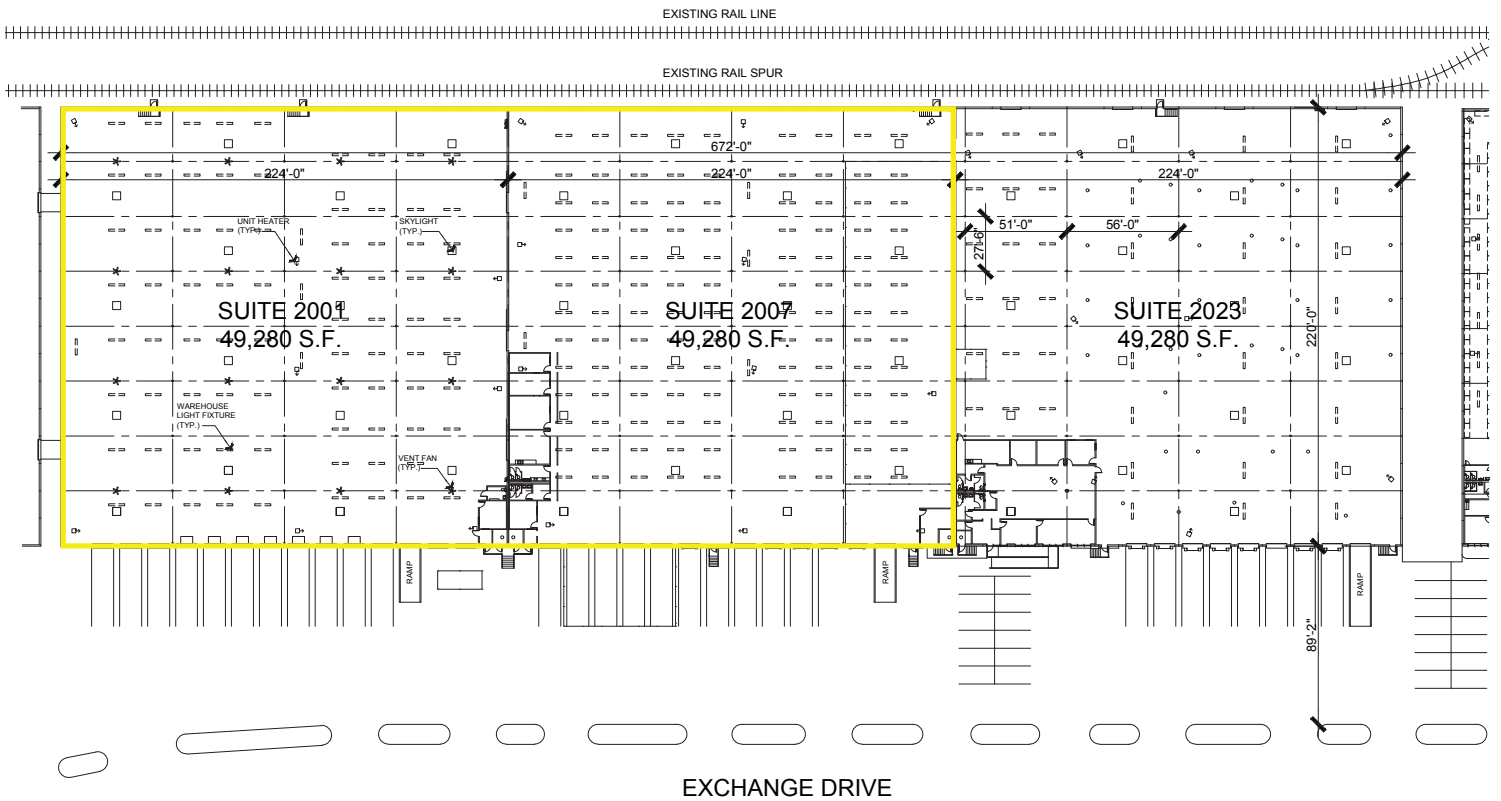
lee-associates.com



For Lease

2001 - 2007 Exchange Drive, Arlington, TX 76011

± 98,560 - 147,840 SF AVAILABLE



The property information/detail contained herein has been obtained from other sources believed to be reliable, and DFW Lee & Associates, LLC has not independently verified such information's accuracy. DFW Lee & Associates, LLC makes no representations, guarantees, or express or implied warranties of any kind regarding the accuracy or completeness of the information provided herein nor the condition of the property and expressly disclaims all such warranties, including but not limited to the implied warranty of suitability and fitness for a particular purpose. Buyer/Lessee should perform its own due diligence regarding the accuracy of the information upon which buyer/lessee relies when entering into any transaction with seller/lessor herein. Furthermore, the information provided herein, including any sale/lease terms, are being provided subject to errors, omissions, changes of price or conditions, prior sale or lease, and withdrawal without notice.

For more information contact:

Mark Graybill, Principal
mgraybill@lee-associates.com
D 972.934.4007

Colton Rhodes, Associate
crhodes@lee-associates.com
D 972.934.4017



lee-associates.com

