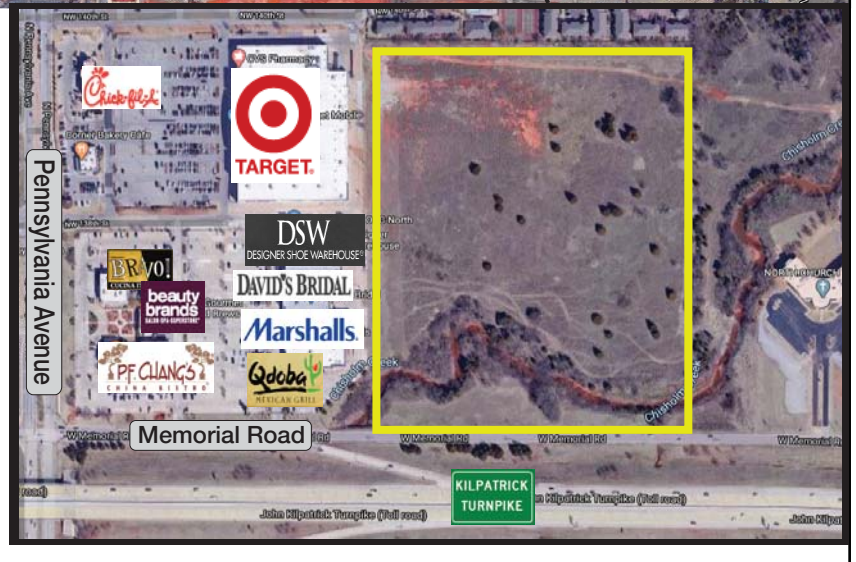




2001 W. Memorial Road Oklahoma City, Oklahoma 73134

PROPERTY HIGHLIGHTS

- 28.38 Acres MOL
- Zoned O-2
- 1000' of Memorial Road Frontage
- Between Super Target and Main Event
- Located in Highly Active Retail/Quail Springs Mall Corridor
- Close Proximity to Chisholm Creek



www.naisullivangroup.com

David Hartnack

Cell: 1 405 761 8955

davidh@naisullivangroup.com

Sam Swanson

Cell: 1 405 208 2046

sam@naisullivangroup.com

NO WARRANTY OR REPRESENTATION, EXPRESS OR IMPLIED, IS MADE AS TO THE ACCURACY OF THE INFORMATION CONTAINED HEREIN, AND THE SAME IS SUBMITTED SUBJECT TO ERRORS, OMISSIONS, CHANGE OF PRICE, RENTAL OR OTHER CONDITIONS, PRIOR SALE, LEASE OR FINANCING, OR WITHDRAWAL WITHOUT NOTICE, AND OF ANY SPECIAL LISTING CONDITIONS IMPOSED BY OUR PRINCIPALS NO WARRANTIES OR REPRESENTATIONS ARE MADE AS TO THE CONDITION OF THE PROPERTY OR ANY HAZARDS CONTAINED THEREIN ARE ANY TO BE IMPLIED.

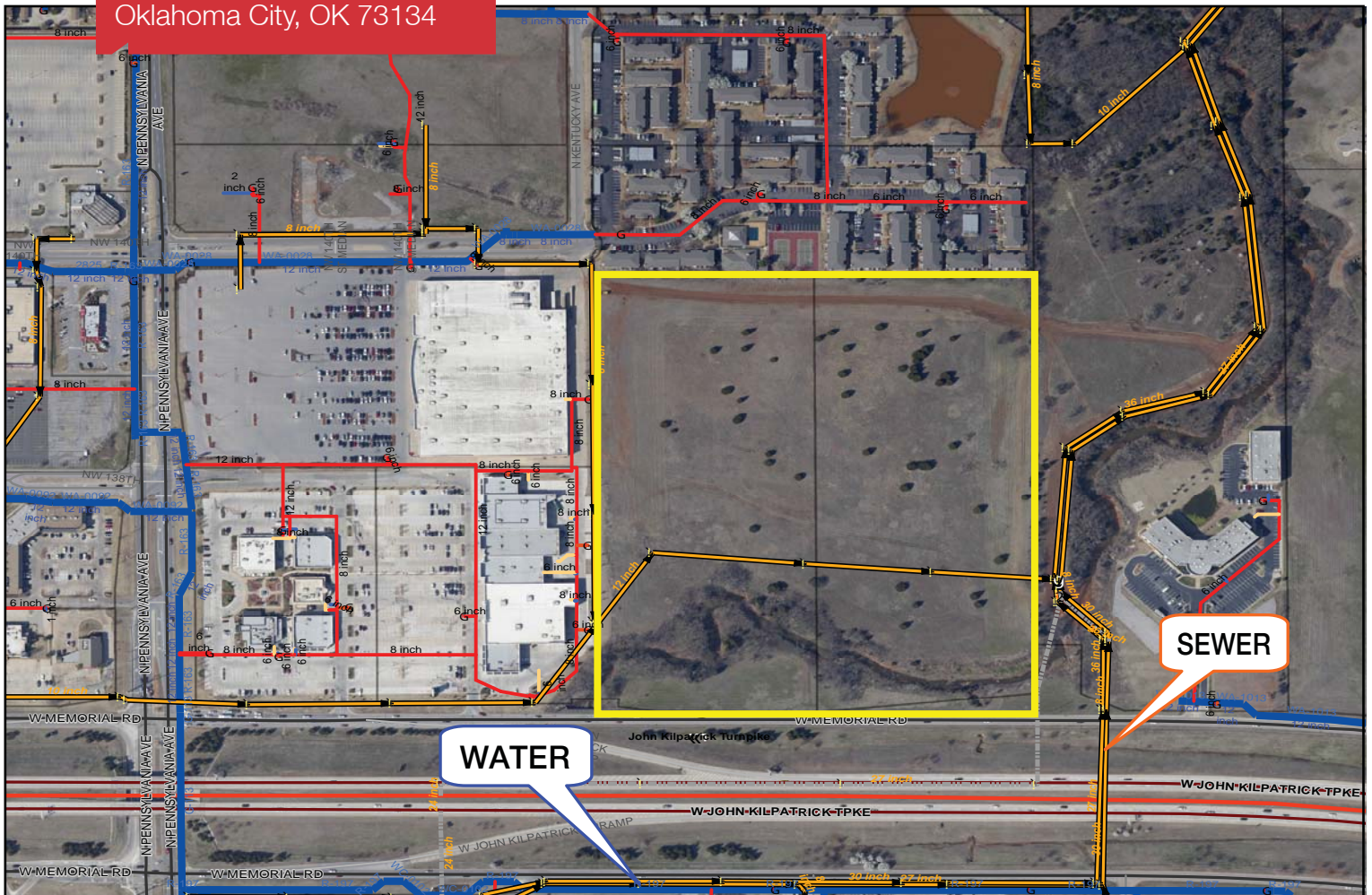
4045 N.W. 64th Street, Suite 340

Oklahoma City, Oklahoma 73116

Office: 1 405 840 0600

Fax: 1 405 840 0610

2001 W. Memorial Road
Oklahoma City, OK 73134



DEMOGRAPHICS

Population		
1 Mile: 10,476	3 Mile: 68,876	5 Mile: 164,149
Average Household Income		
1 Mile: \$48,421	3 Mile: \$62,948	5 Mile: \$66,735
Total Households		
1 Mile: 5,868	3 Mile: 30,494	5 Mile: 69,039

LOCATION HIGHLIGHTS

- Frontage: 1,031' on Memorial Road
- Dimensions: 1,031' x 1,180'

David Hartnack

Cell: 1 405 761 8955

davidh@naisullivangroup.com

Sam Swanson

Cell: 1 405 208 2046

sam@naisullivangroup.com

www.naisullivangroup.com

NAISullivan Group

4045 N.W. 64th Street, Suite 340
Oklahoma City, Oklahoma 73116
Office: 1 405 840 0600
Fax: 1 405 840 0610