

# Beltway-225 Business Park

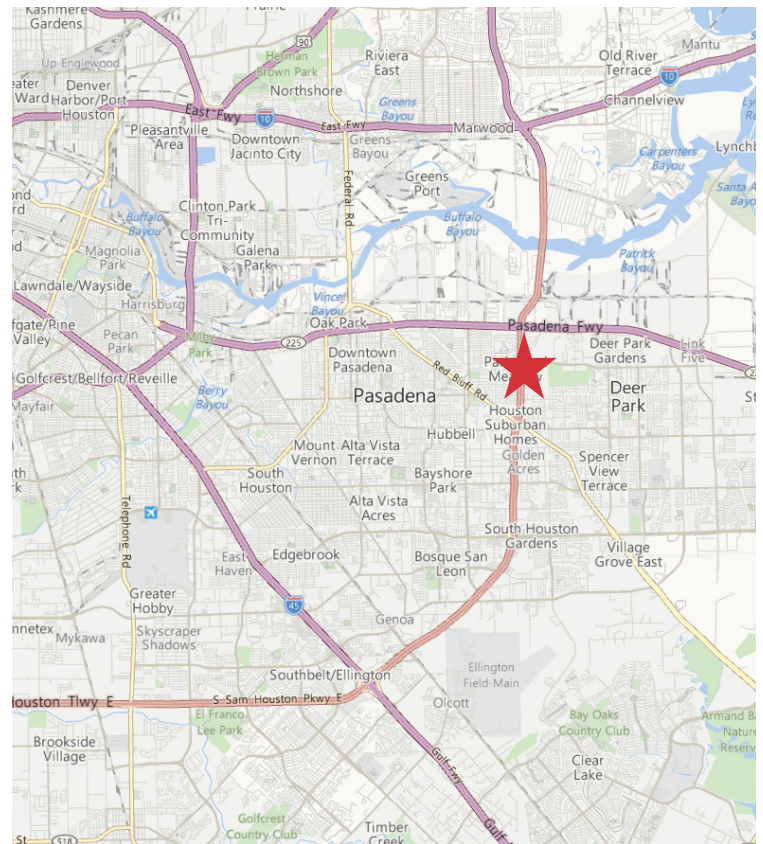
## Build-to-Suit Site

**3.6 Acres with Beltway 8 Frontage**



### Property Highlights

- ±3.6 Net Acres
- Hard Corner of Beltway 8 & Meadow Wood Drive, just south of Highway 225
- Tiltwall Construction
- Showroom, Manufacturing, or Distribution Facilities Possible
- Dock High or Grade Level
- Possible Building Sizes from 15,000 to 60,000 SF Tiltwall



**Travis Land, SIOR**  
tel 713 985 4624  
travis.land@naipartners.com

**Michael Keegan, SIOR**  
tel 713 275 9630  
michael.keegan@naipartners.com

**NAI Partners**  
tel 713 629 0500  
fax 713 629 0504  
www.naipartners.com

**UNITED EQUITIES**  
REAL ESTATE  
DEVELOPMENT LEASING MANAGEMENT

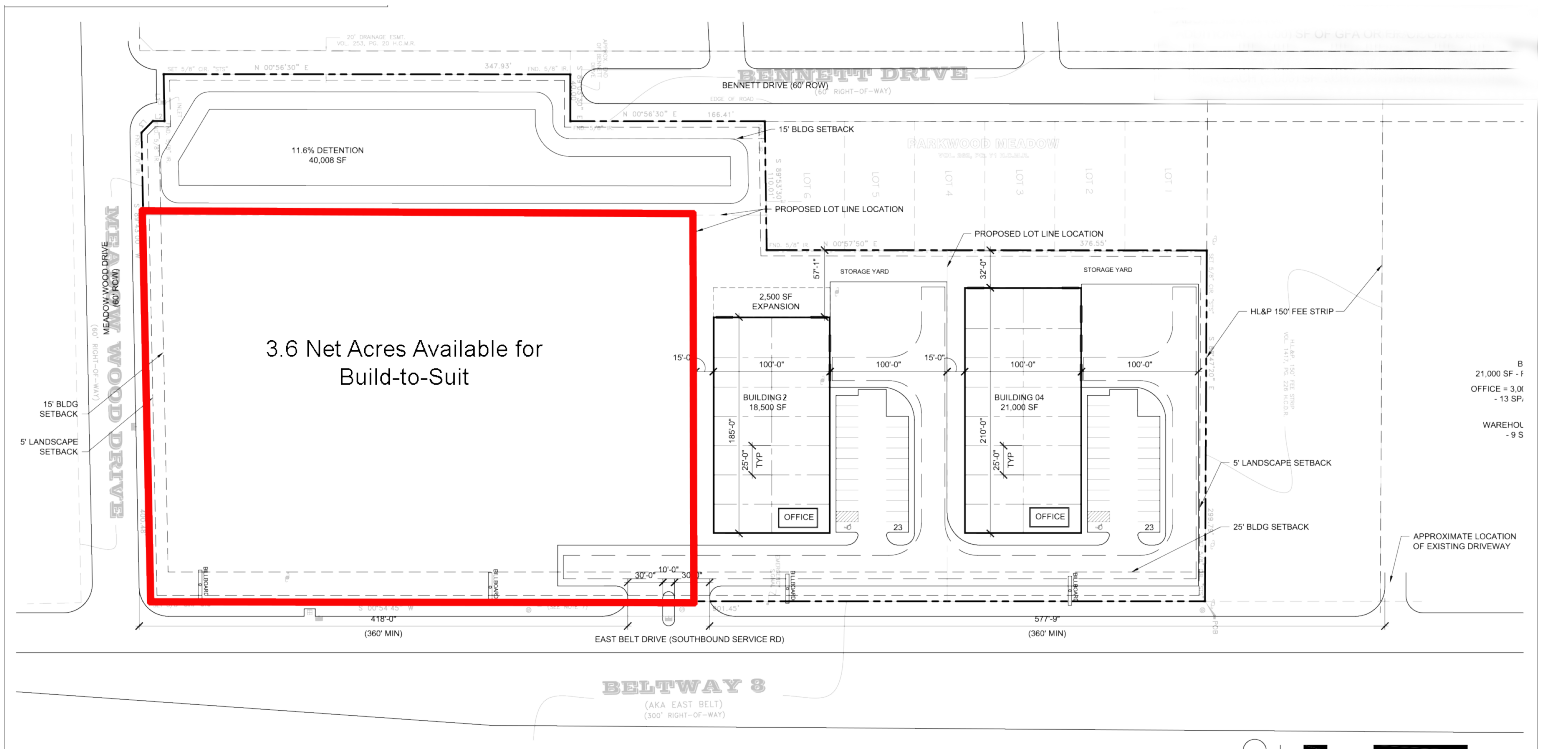
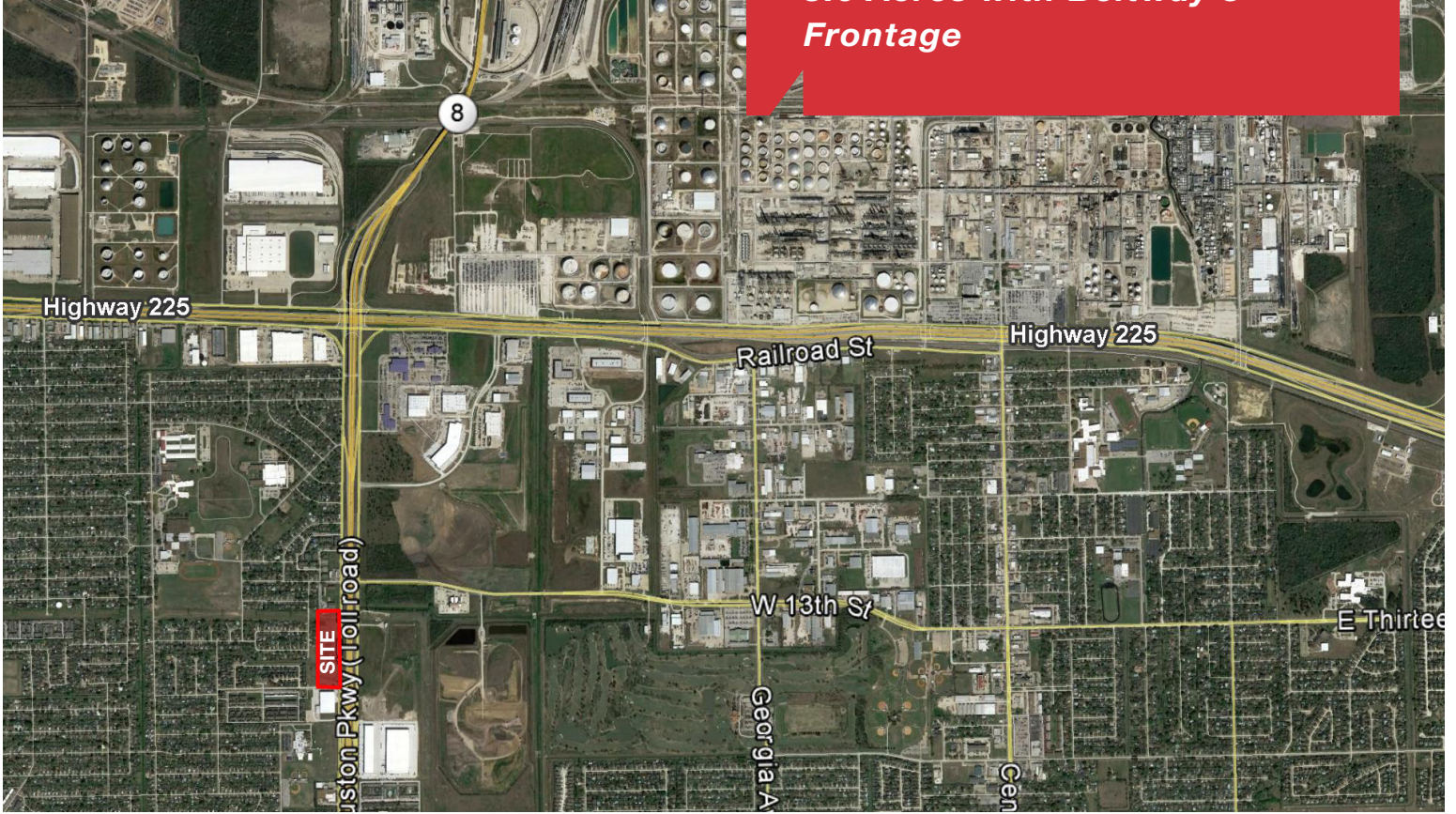
**NAIPartners**  
HOUSTON | AUSTIN | SAN ANTONIO



# Beltway-225 Business Park

## Build-to-Suit Site

3.6 Acres with Beltway 8 Frontage



**Travis Land, SIOR**  
tel 713 985 4624  
travis.land@naipartners.com

**Michael Keegan, SIOR**  
tel 713 275 9630  
michael.keegan@naipartners.com

**NAI Partners**  
tel 713 629 0500  
fax 713 629 0504  
www.naipartners.com

**UNITED EQUITIES**  
REAL ESTATE  
DEVELOPMENT LEASING MANAGEMENT

**NAIPartners**  
HOUSTON | AUSTIN | SAN ANTONIO

The information contained herein has been given to us by the owner of the property or other sources we deem reliable, we have no reason to doubt its accuracy, but we do not guarantee it. All information should be verified prior to purchase or lease. © 2018 NAI Partners. All rights reserved.