

44 UNION SQUARE

A LANDMARK REIMAGINED



RETAIL OPPORTUNITY AT THE CORNER OF 17TH STREET AND UNION SQUARE PARK

FOLLOW US ON INSTAGRAM

Landmark redevelopment offering up to 73,095 rsf with high visibility branding and signage

Features an iconic glass dome creating unique light filled space with soaring views overlooking Union Square

Flexible sizes on the ground floor offering multiple retail scenarios

Positioned at the southeast corner of 17th Street and Union Square East

Self-contained building with dedicated lobby and private elevator to upper floors

An AIA Design Award winner, which celebrates the best of global architectural products and projects

Immediate delivery



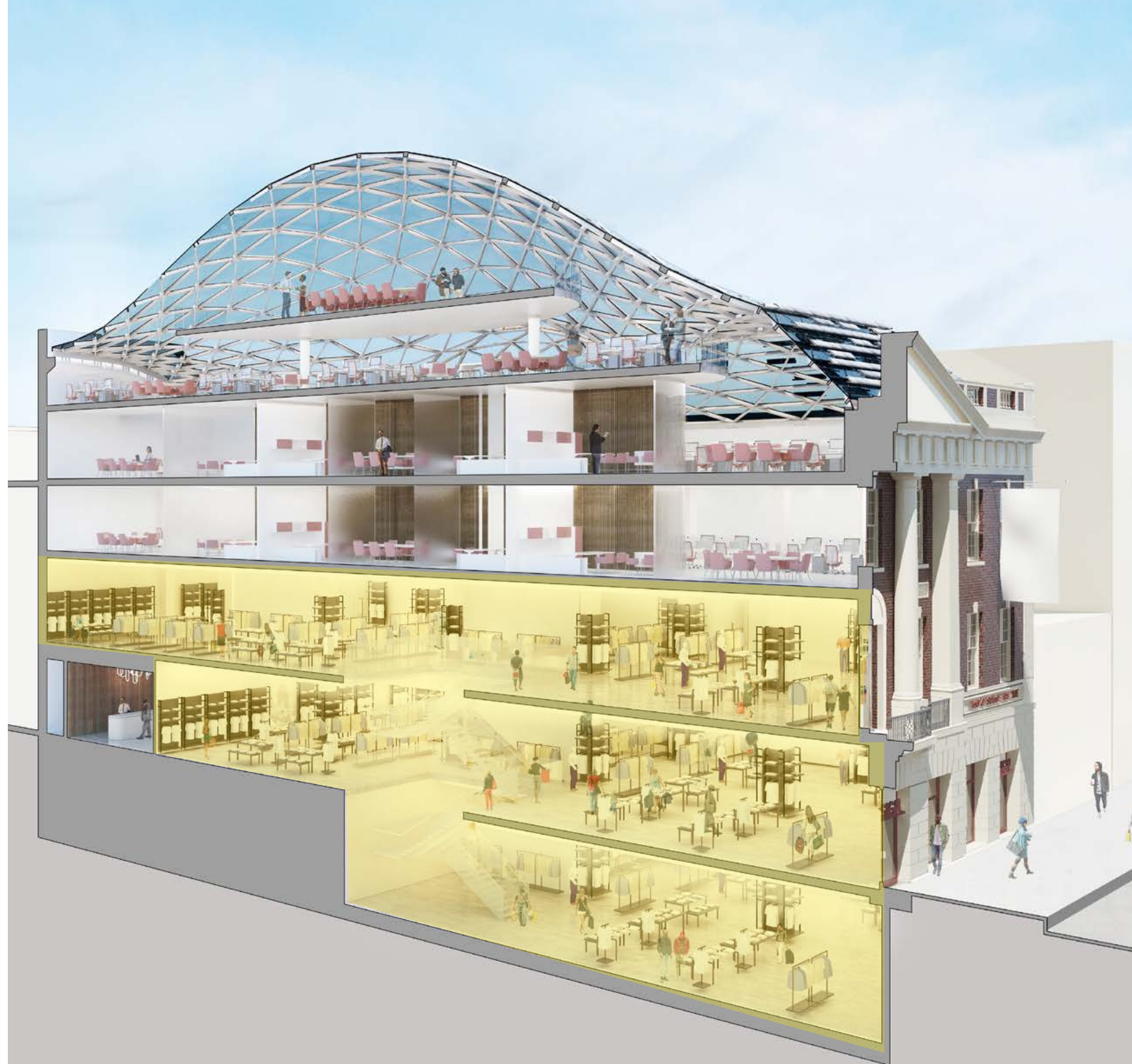
This is a gift to the city...masterful.

—NYC Landmarks Preservation Commissioner—

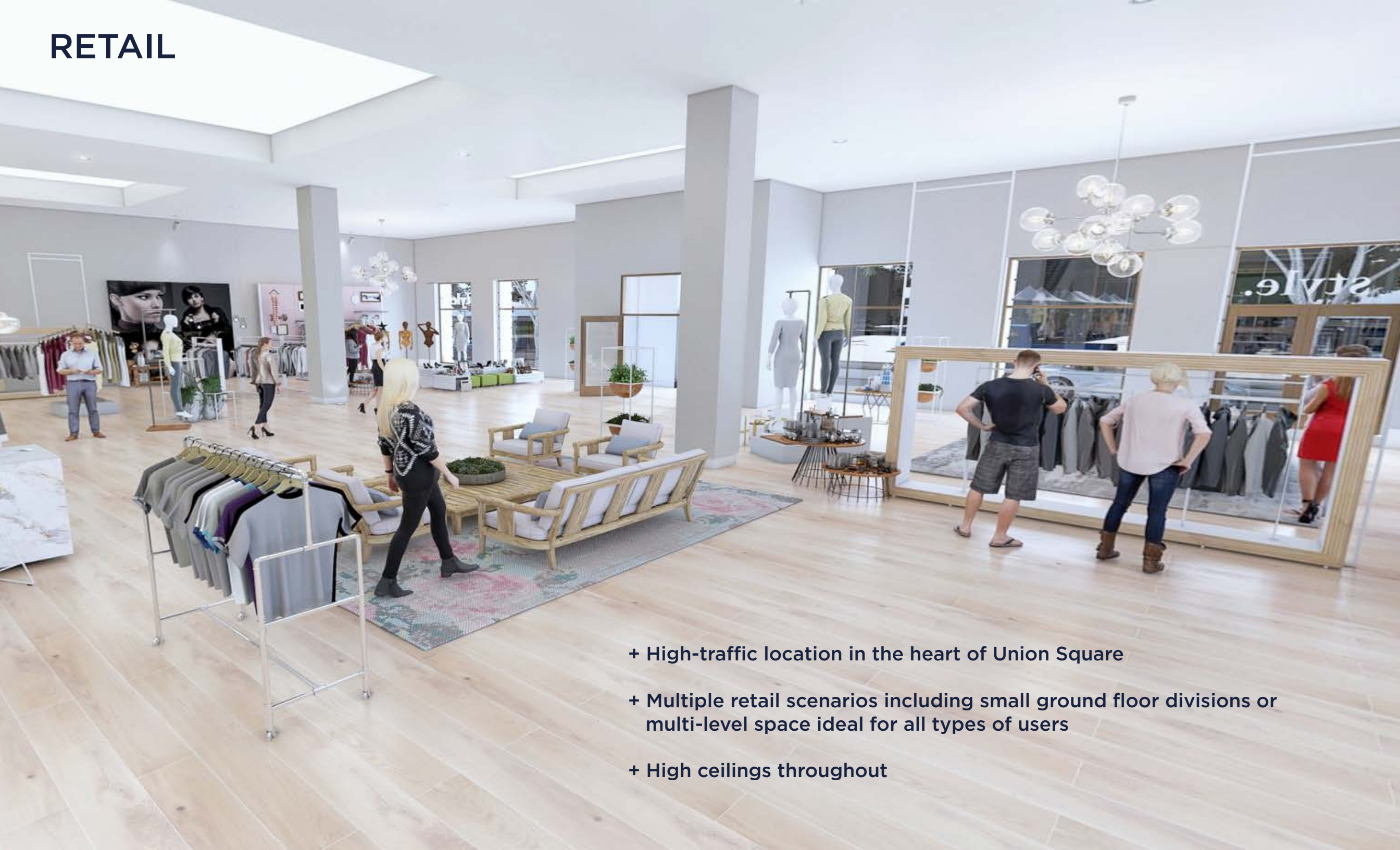


AVAILABILITY

FLOOR	SIZE	CEILING HEIGHT
6	4,444 RSF	19'
5	8,575 RSF	12' - 21'
4	15,058 RSF	12'
3	15,029 RSF	UP TO 12'6"
2	15,029 RSF	12'2"
GROUND	8,460 USF	14'6" - 16'2"
LL	6,500 USF	14'8"



RETAIL



+ High-traffic location in the heart of Union Square

+ Multiple retail scenarios including small ground floor divisions or multi-level space ideal for all types of users

+ High ceilings throughout

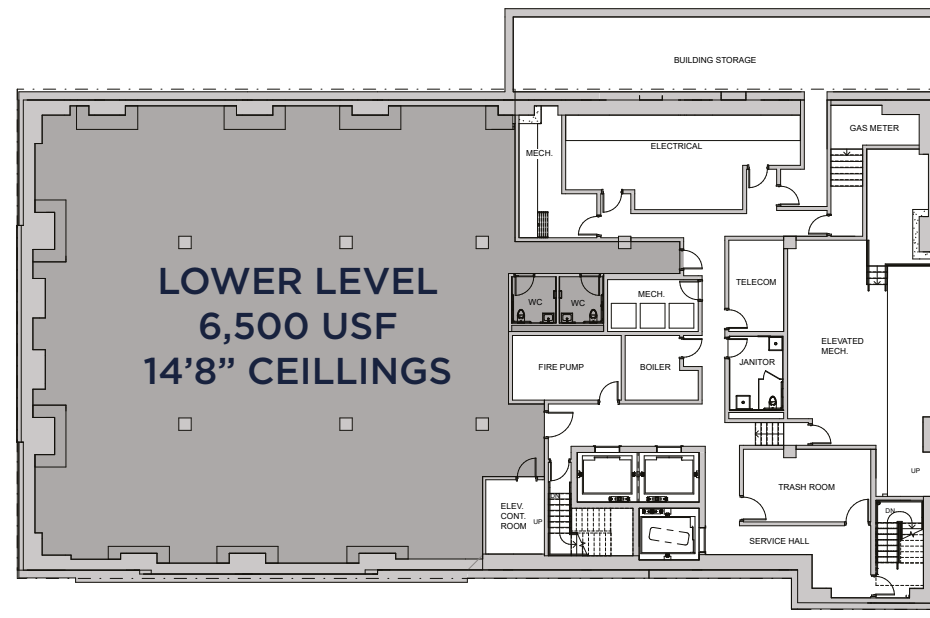
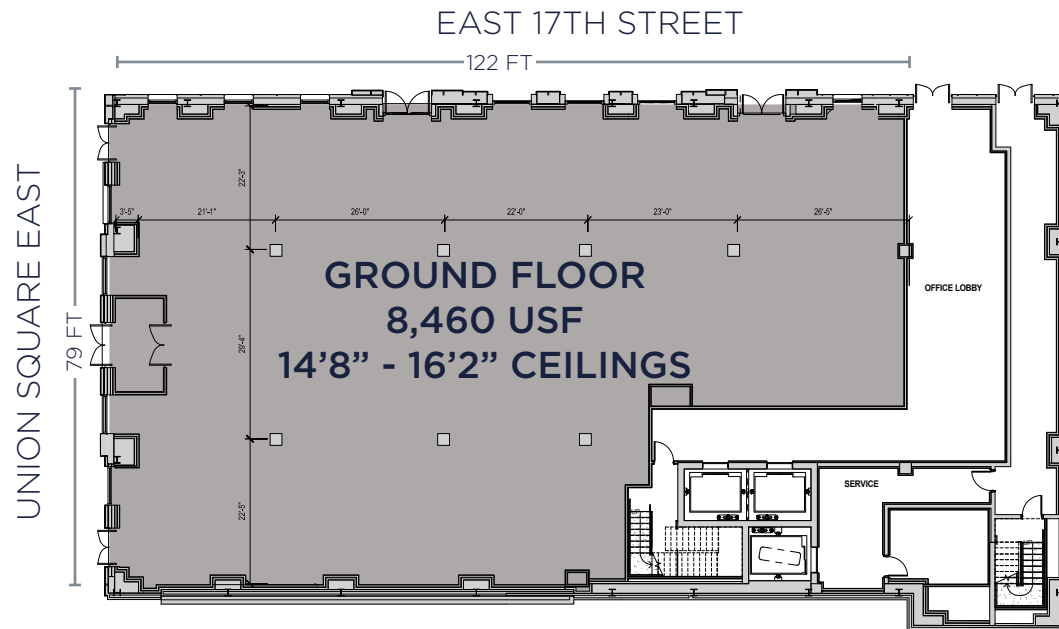
RETAIL FLOOR PLANS



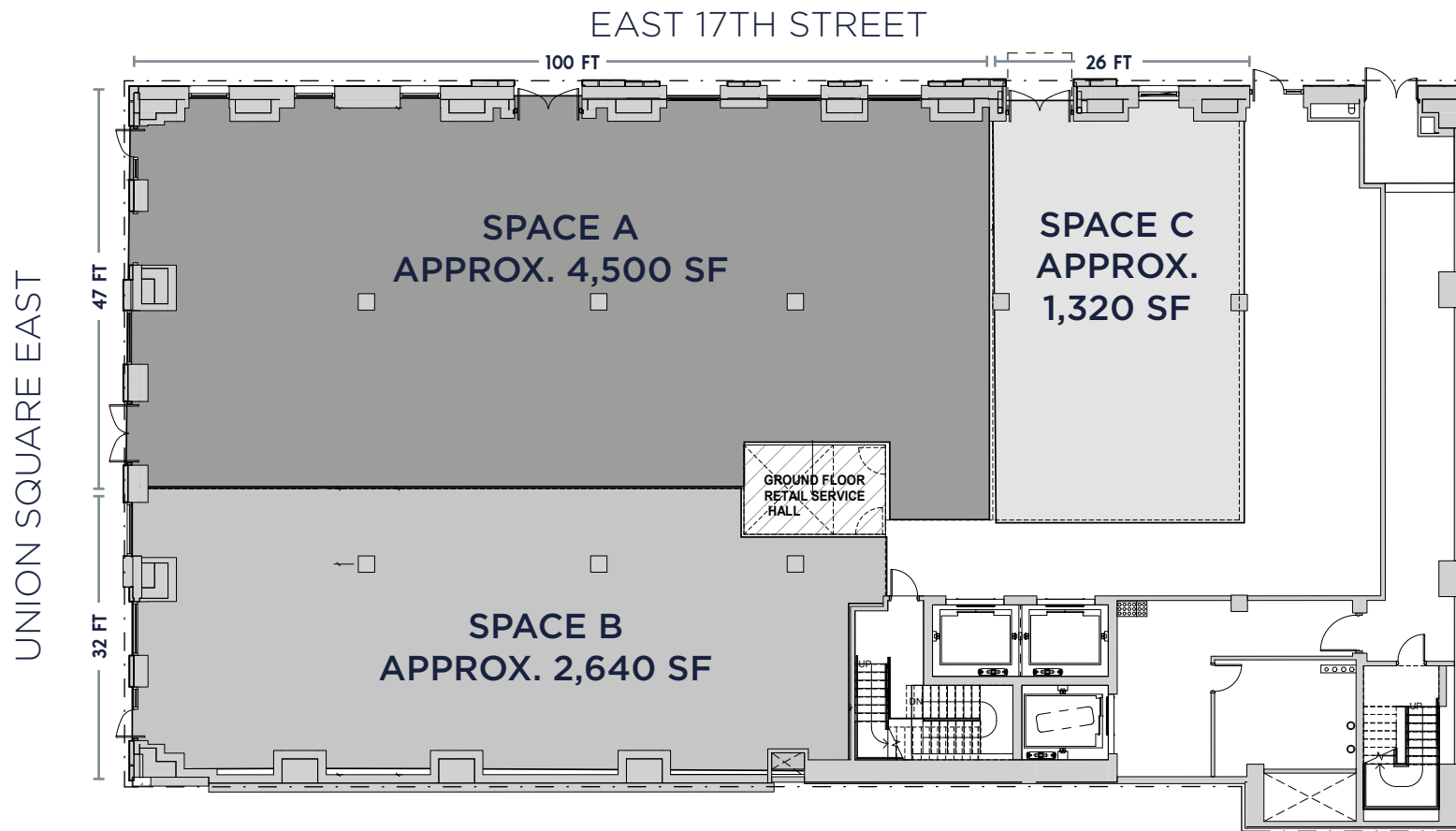
Multiple layouts possible

Can combine with floors 3-6

All uses considered including restaurants, fitness and entertainment



PROPOSED GROUND FLOOR DIVISIONS



Alternate layouts possible

Can combine with upper floors and lower level



OFFICE



- + Top floor features an iconic glass dome with 19' ceilings creating unique light-filled space with soaring views overlooking Union Square
- + Self-contained building offering up to 73,095 rsf of contiguous space
- + Brand new infrastructure and mechanical systems, ready for tenant fit out

SIXTH FLOOR VIEW



FIFTH FLOOR VIEW



SIXTH FLOOR VIEW

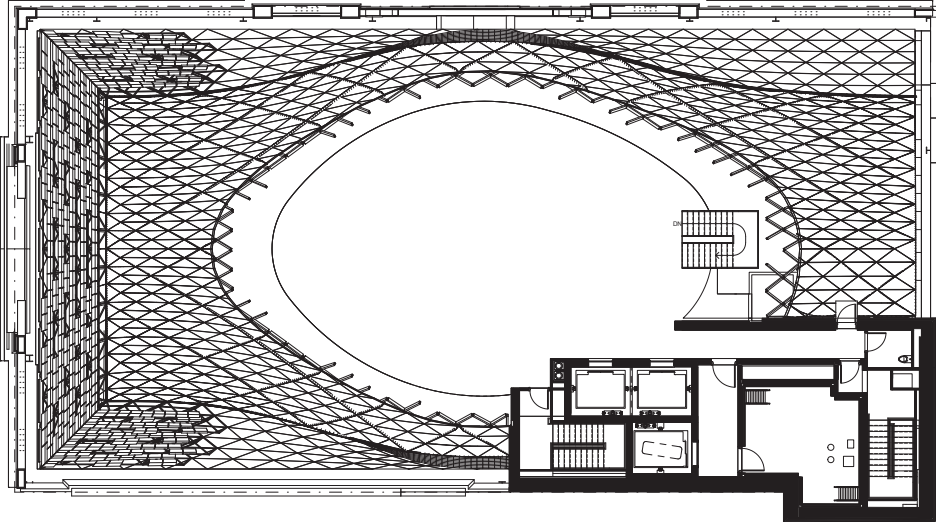
SIXTH FLOOR RENDERINGS



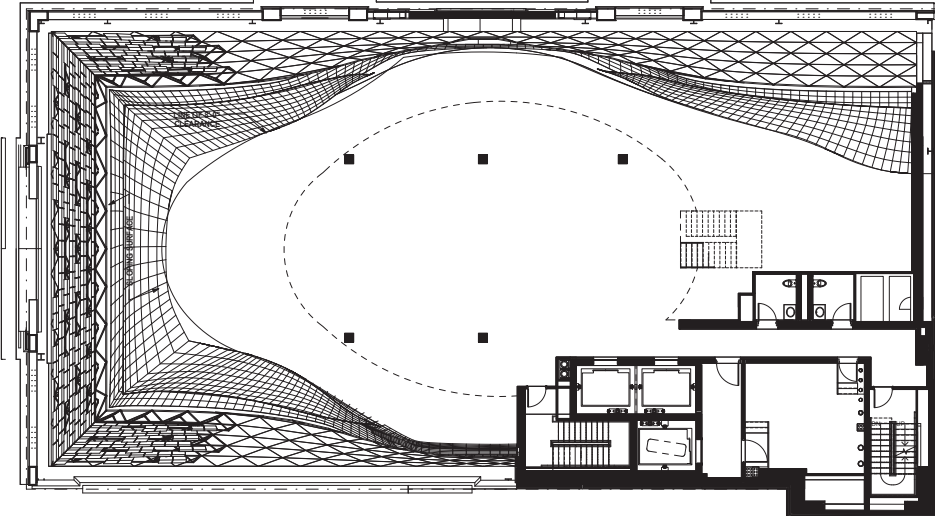
FOURTH FLOOR RENDERING

OFFICE FLOOR PLANS

SIXTH FLOOR: 4,444 RSF

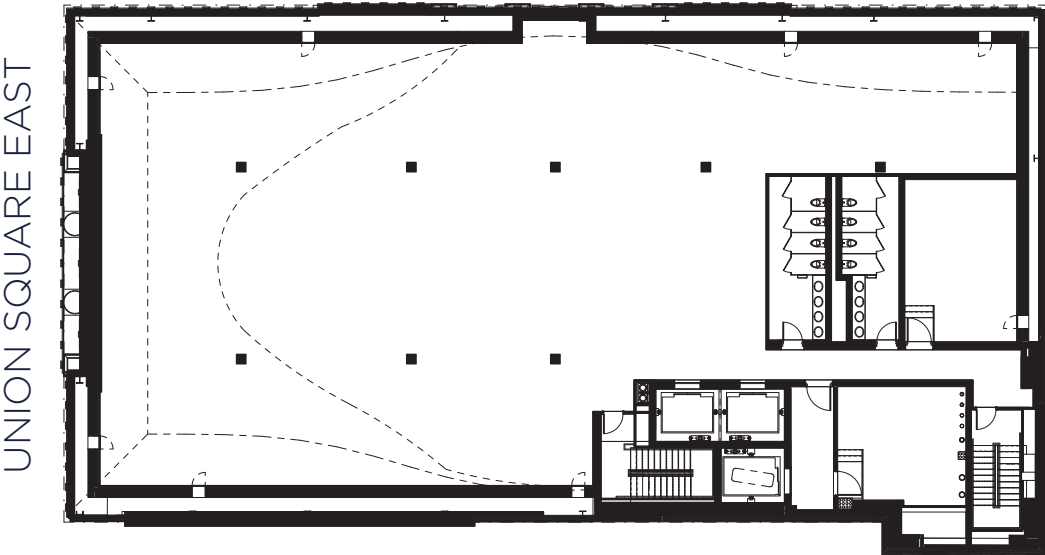


FIFTH FLOOR: 8,575 RSF

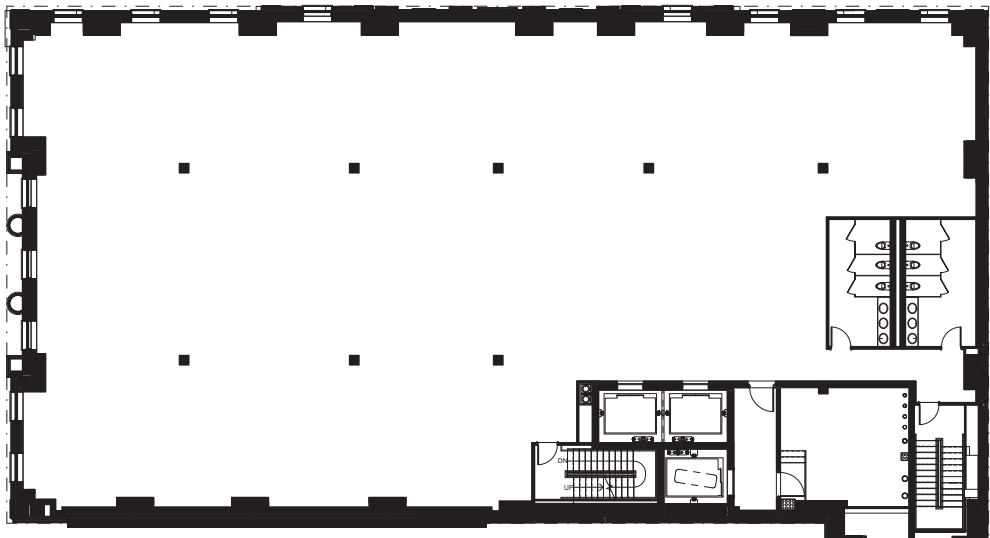


EAST 17TH STREET

FOURTH FLOOR: 15,068 RSF

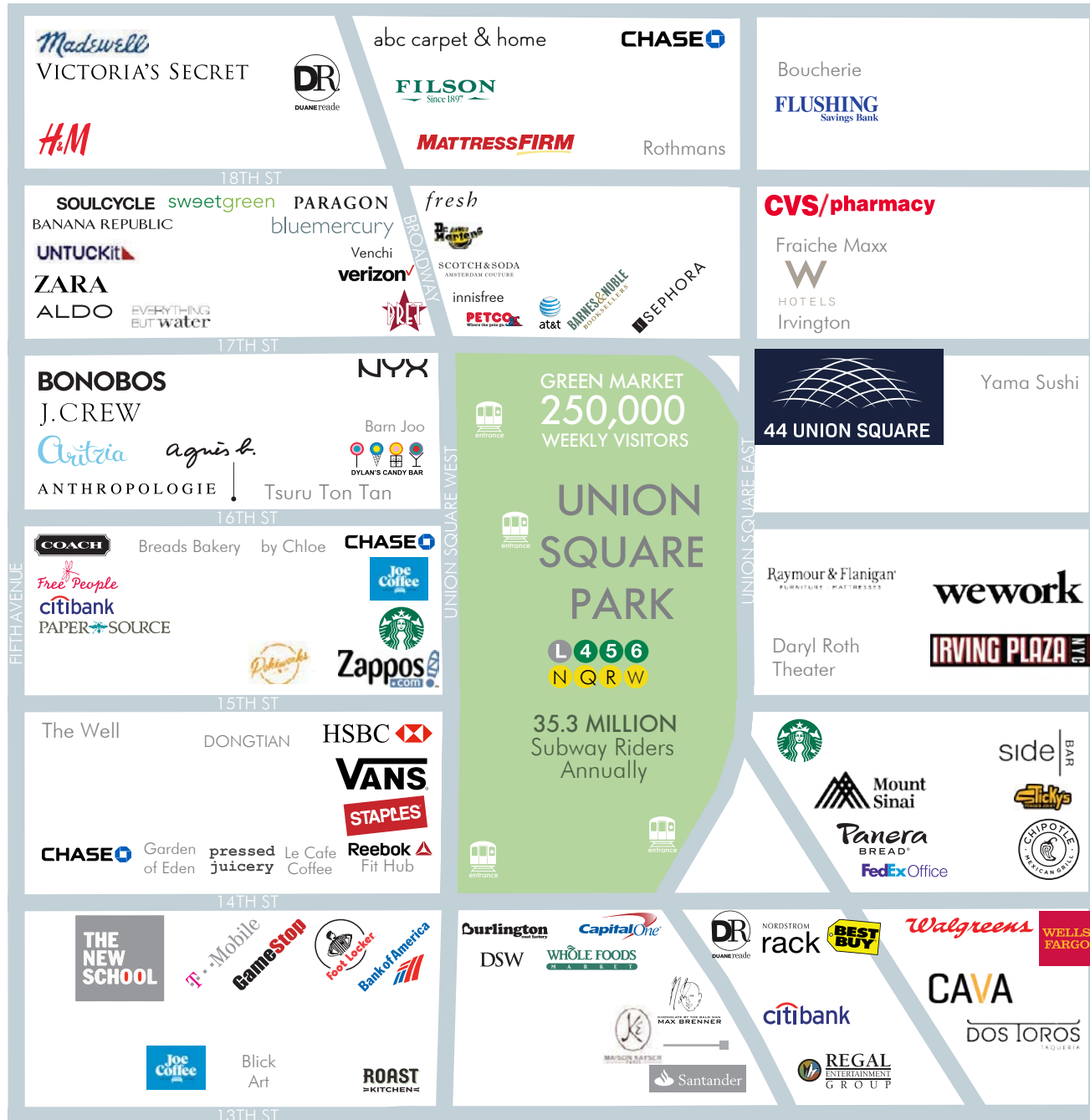


THIRD FLOOR: 15,029 RSF



Can combine with second floor for an additional 15,029 RSF

NEIGHBORHOOD



PEDESTRIAN TRAFFIC

383,000 people walk through Union Square daily



TRANSPORTATION

Annual ridership exceeds 35.3 million
The 4th busiest transit hub in NYC



DAYTIME/OFFICE POPULATION

Over 27.5 million RSF of office space with
153,000 employees



RESIDENTIAL POPULATION

75,489 residents with a median income of over
\$113,930 per person



STUDENT POPULATION

90,000 students attend area universities
including New York University, The New School and Pratt
Institute





TENANT SIGN

TENANT SIGN

TENANT SIGN

TENANT SIGN

TENANT SIGN

TENANT SIGN
Union Square

TENANT SIGN

BEEN OFFERED FOR LEASE
212 372 2121

ICONIC BRANDING OPPORTUNITIES
212 372 2433

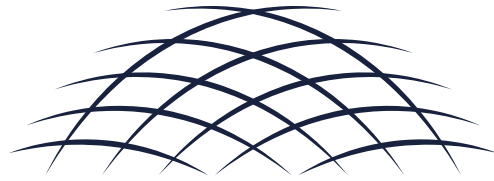
ICONIC BRANDING OPPORTUNITIES
RETAIL OFFICE SPACE AVAILABLE
212 372 2433

44 UNION SQUARE
JEFFREY D ROSEMAN
212 372 2430
www.tenantsign.com

ICONIC BRANDING OPPORTUNITIES
DRAMATIC LIGHT-FILLED SPACE
FLEXIBLE

44 UNION SQUARE
PETER T GIBSON
212 372 2433
www.tenantsign.com

E 17 St
ONE WAY
ONE WAY



44 UNION SQUARE

A LANDMARK REIMAGINED

FOR FURTHER INFORMATION ON RETAIL LEASING OPPORTUNITIES, PLEASE CONTACT:

JEFFREY D ROSEMAN

212.372.2430
jroseman@ngkf.com

MARC FRANKEL

212.372.2240
mfrankel@ngkf.com

FOLLOW US ON INSTAGRAM

@44UNIONSQUARE
WWW.44UNIONSQUARE.COM

NEWMARK

nmrk.com



The information contained herein has been obtained from sources deemed reliable but has not been verified and no guarantee, warranty or representation, either express or implied, is made with respect to such information. Terms of sale or lease and availability are subject to change or withdrawal without notice.

