

# Greenwich - For Lease with purchase option

## COMMERCIAL / OFFICE COUNTRY COTTAGE



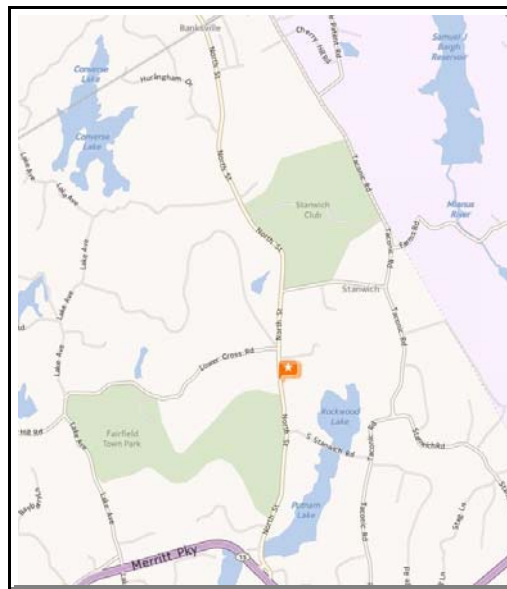
### 779 NORTH STREET Greenwich, CT

- Magnificent Country Setting
- Surrounded by nature preserve
- 1 Mile From Merritt Parkway
- Convenient to Banksville, Stamford
- Existing space layout works for a variety of commercial uses
- Lower level opens up to a beautiful patio
- Generous On-site Parking

Available: **3,000 SF** on 3 floors  
Dividable to 1,000 SF

Occupancy: Immediate

Rental: \$25.00 per SF plus metered electric and heating oil.

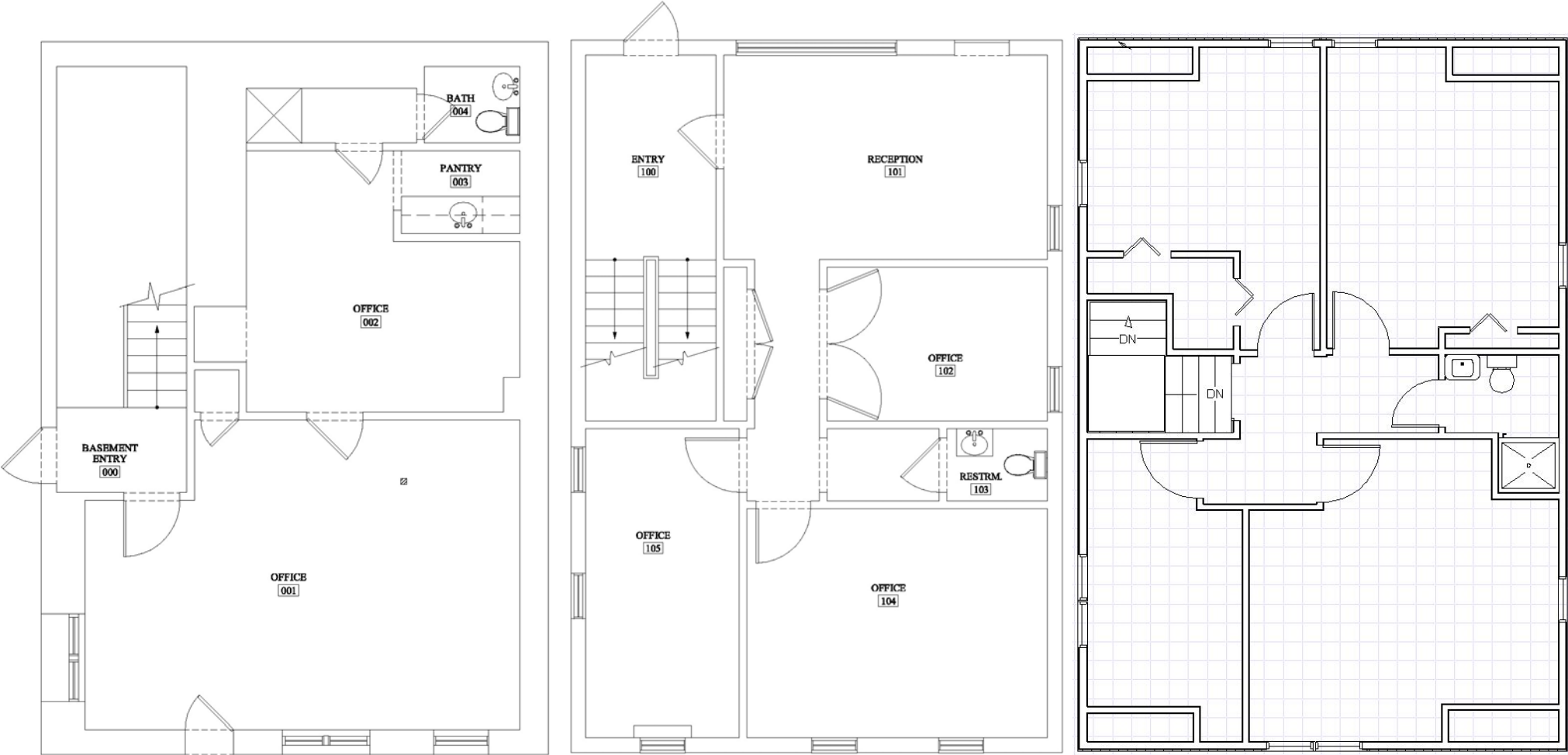


**TEDESCO**  
REALTY ASSOCIATES

Please call:  
Michael Tedesco  
(203) 531-5939

View our listings online:  
**www.TedescoRealty.com**  
Fax: (203) 531-4757  
E-mail: [Contact@TedescoRealty.com](mailto:Contact@TedescoRealty.com)  
P.O. Box 31066 Greenwich, CT 06831

Floor Plans



Lower Level

1<sup>st</sup> Floor

2<sup>nd</sup> Floor