

For Lease

10th Street Business Park - Phase II 1809 10th Street, Suite 100, Plano, TX 75074

± 56,632 SF AVAILABLE



PROPERTY OVERVIEW

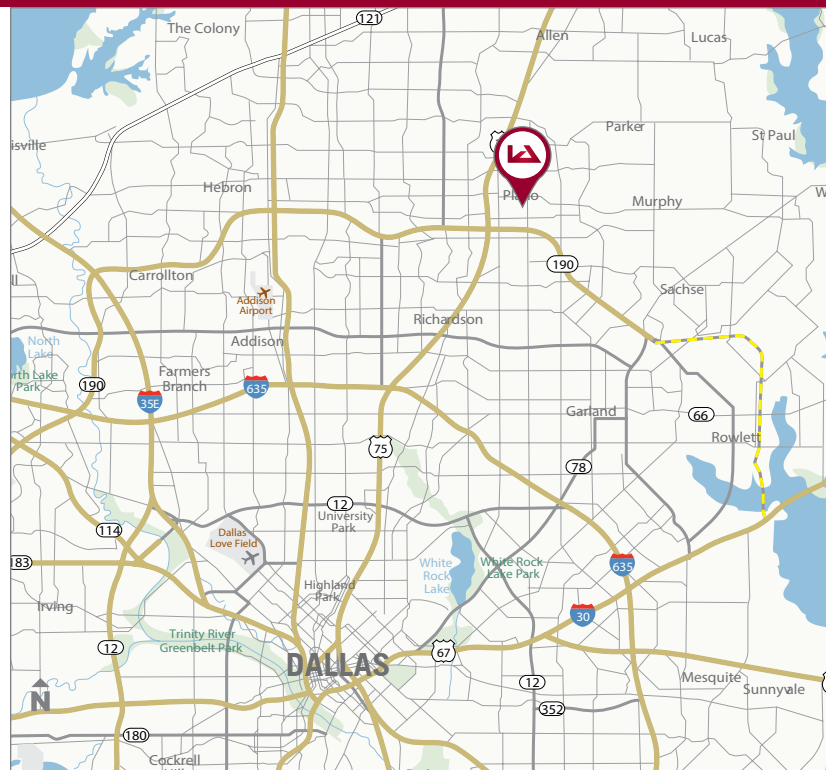
County: Collin
Market: Northeast Dallas Industrial
Sub Market: Plano Industrial

BUILDING DATA

Total Building SF: 151,232 SF
Clear Height: 24' - 26'
Column Spacing: 40' x 40'
Sprinklered: Fully Sprinklered
Truck Court Depth: 140'

LISTING DATA

Available SF: 56,632 SF
Warehouse SF: 50,661 SF
Office SF: 5,971 SF
Loading: 6 Dock High Doors
2 Edge of Dock Levelers
1 Pit Leveler
Comments: 100% HVAC
Very Heavy Power
T-5 Lighting
Pinweld insulation on warehouse walls and ceiling
Easy access to Hwy 75 and George Bush Turnpike (190)



Owned by



For more information contact:

George Tanghongs, Principal
georget@lee-associates.com
D 972.934.4008

Brett Lewis, Principal
blewis@lee-associates.com
D 972.934.4018

lee-associates.com

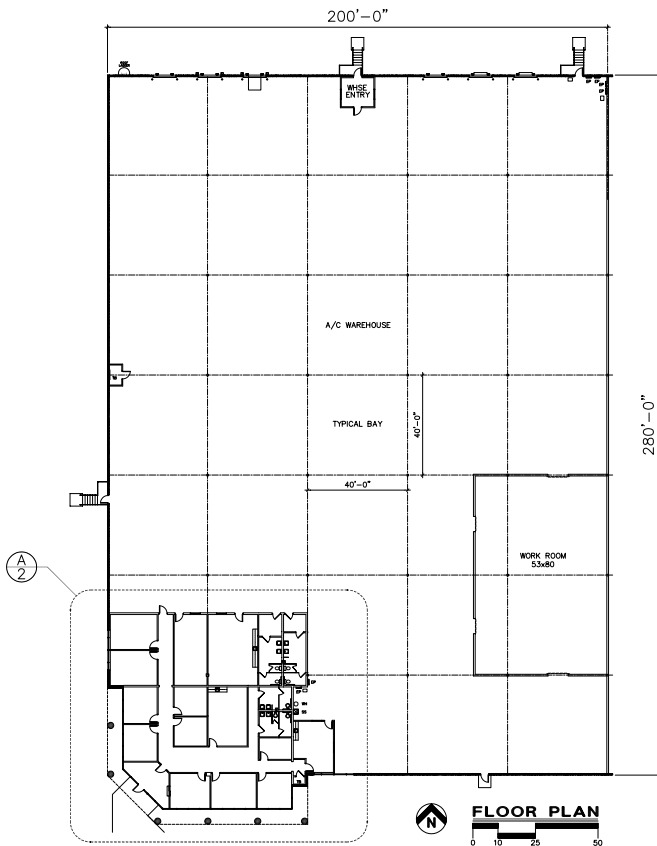


For Lease

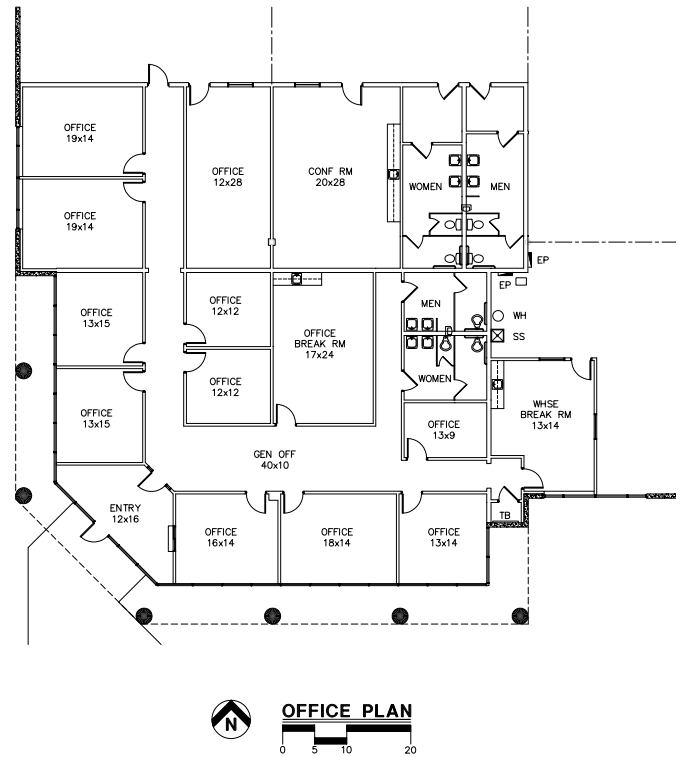
10th Street Business Park - Phase II 1809 10th Street, Suite 100, Plano, TX 75074

± 56,632 SF AVAILABLE

Overall Floor Plan



Office Floor Plan



The property information/detail contained herein has been obtained from other sources believed to be reliable, and DFW Lee & Associates, LLC has not independently verified such information's accuracy. DFW Lee & Associates, LLC makes no representations, guarantees, or express or implied warranties of any kind regarding the accuracy or completeness of the information provided herein nor the condition of the property and expressly disclaims all such warranties, including but not limited to the implied warranty of suitability and fitness for a particular purpose. Buyer/Lessee should perform its own due diligence regarding the accuracy of the information upon which buyer/lessee relies when entering into any transaction with seller/lessor herein. Furthermore, the information provided herein, including any sale/lease terms, are being provided subject to errors, omissions, changes of price or conditions, prior sale or lease, and withdrawal without notice.

For more information contact:

George Tanghongs, Principal

georget@lee-associates.com
D 972.934.4008

Brett Lewis, Principal

blewis@lee-associates.com
D 972.934.4018

lee-associates.com

