

For Lease

VISTA PROFESSIONAL OFFICE SPACE



1020 S. SANTA FE

AVAILABLE: First Level
Suite C 1,300 SF (1st Floor)

RENTAL RATE: \$1.65 PSF - Includes Utilities.

COMMENTS: Attractive bi-level office building. Located near busy intersection of S. Santa Fe and Escondido Ave. Easy access to Hwy 78.

V - 1020 S Santa Fe V21

This information is compiled from data which we believe to be correct but no liability is assumed by this company as to accuracy of such data.

For More Information:

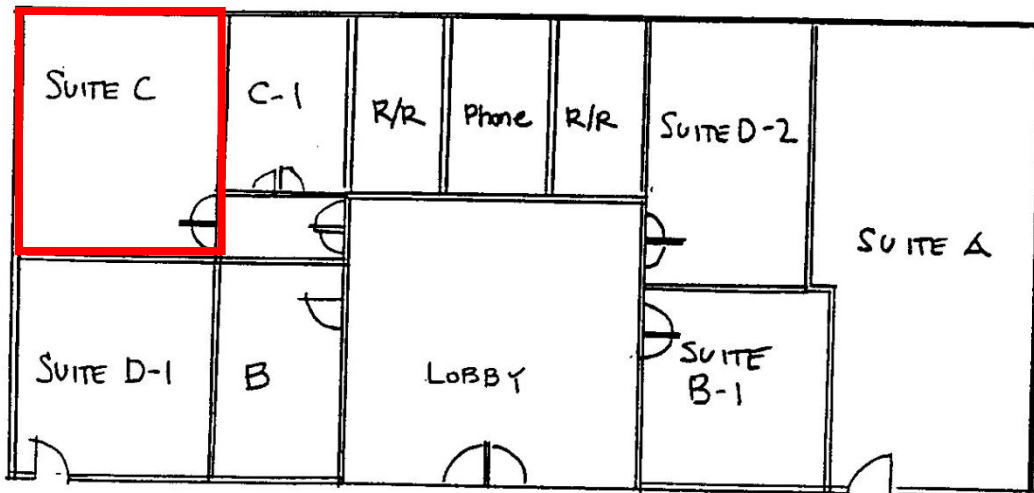
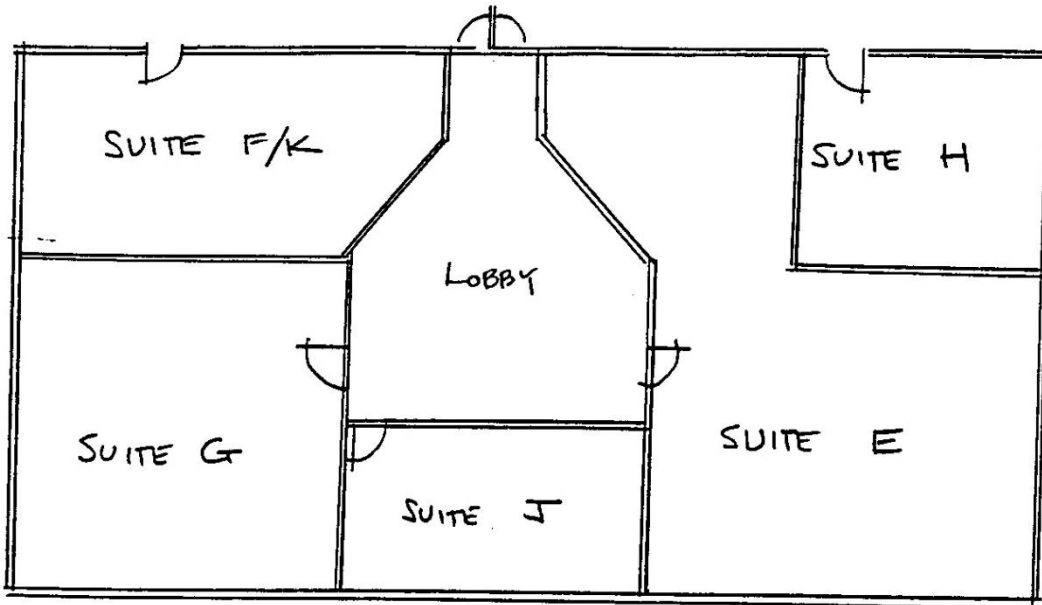
CDC Commercial 11440 West Bernardo Court #300 San Diego, CA 92127
Nick Zech | 858.232.2100 | Lic. 01721457 | nzech@cdccommercial.com
Matt Orth | 858.736.1337 | Lic. 01884500 | morth@cdccommercial.com



License #01857155

For Lease

2nd Floor - Entrance



1st Floor - Entrance

V - 1020 S Santa Fe V21

This information is compiled from data which we believe to be correct but no liability is assumed by this company as to accuracy of such data.

For More Information:

CDC Commercial 11440 West Bernardo Court #300 San Diego, CA 92127
Nick Zech | 858.232.2100 | Lic. 01721457 | nzech@cdccommercial.com
Matt Orth | 858.736.1337 | Lic. 01884500 | morth@cdccommercial.com



License #01857155