

1225

NINETEENTH
STREET

WASHINGTON / DC

UNIQUE AVAILABILITIES
4,580 SF FIFTH FLOOR

UNMATCHED VIEWS IN THE HEART OF DUPONT CIRCLE



MARCUS PARTNERS



PROPERTY HIGHLIGHTS



1 block from Dupont Metro



Natural Light



Underground Parking With Direct Building Access



Recently Remodeled Lobby



Direct Elevator Exposure



Close to Great Shops and Restaurants



Column-Free Floors



New Bike Room



4,580 SF AVAILABLE | FIFTH FLOOR

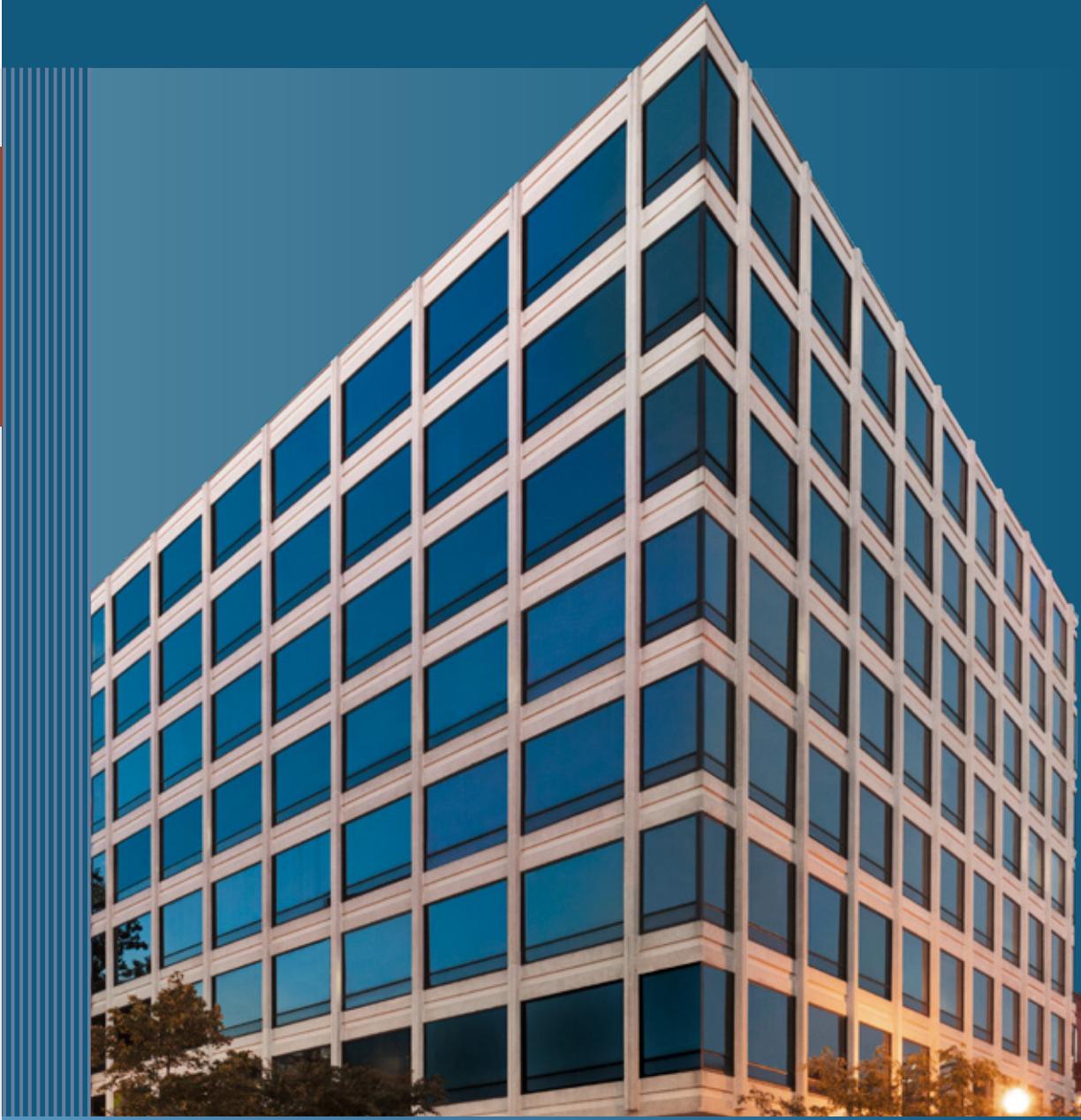


JEFFERSON ST

19TH STREET

1225
NINETEENTH
STREET

UNMATCHED VIEWS IN THE HEART OF DUPONT CIRCLE



PLEASE CONTACT THE LEASING TEAM FOR INFORMATION:

Kevin Howard

kevin.howard@cbre.com

+1 202 585 5776

Lara Nealon

lara.nealon@cbre.com

+1 202 585 5795

CBRE

© 2019 CBRE, Inc. All rights reserved. This information has been obtained from sources believed reliable, but has not been verified for accuracy or completeness. Any projections, opinions, or estimates are subject to uncertainty. The information may not represent the current or future performance of the property. You and your advisors should conduct a careful, independent investigation of the property and verify all information. Any reliance on this information is solely at your own risk. CBRE and the CBRE logo are service marks of CBRE, Inc. and/or its affiliated or related companies in the United States and other countries. All other marks displayed on this document are the property of their respective owners. Photos herein are the property of their respective owners and use of these images without the express written consent of the owner is prohibited. PMStudio_September2019



MARCUS PARTNERS