

KEY FEATURES

- Access via Westchester Drive and Scott Avenue
- ±1,526 SF Building on Site
- Approximately 305' Feet of Road Frontage on Westchester
- Across from High Points New Publix and Walgreens
- Graded and Level Lot
- VPD: ±26,000 on Westchester and ±27,000 on North Main (2018)
- \$1,650,000

PRIME RETAIL DEVELOPMENT PARCEL

FOR SALE

130 Westchester Dr.
High Point, NC 27262

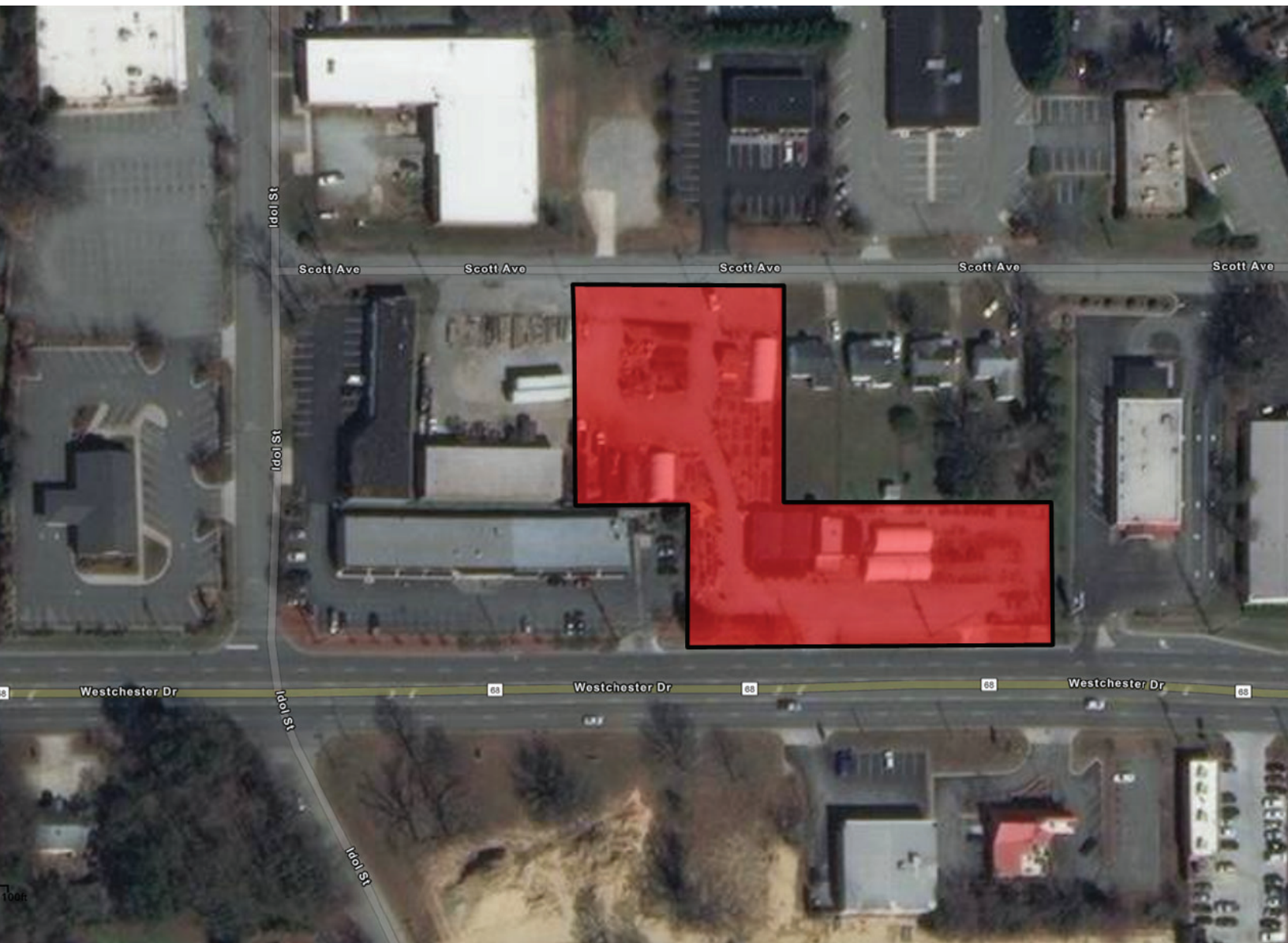


LEARN MORE ABOUT THIS PROPERTY

JORDAN REECE, CCIM

Jordan@commercialrealtync.com

336.689.7545



PRIME RETAIL DEVELOPMENT PARCEL

LOCATION ADDRESS: 130 WESTCHESTER DRIVE, HIGH POINT, NC 27262

Property Type	Retail	Acres ±	1.28	Parking	Ample
Retail SF ±	1,526	Office SF ±	1,526	Restrooms	Multiple
Year Built	1946	Bldg Exterior	Concrete Block		

UTILITIES

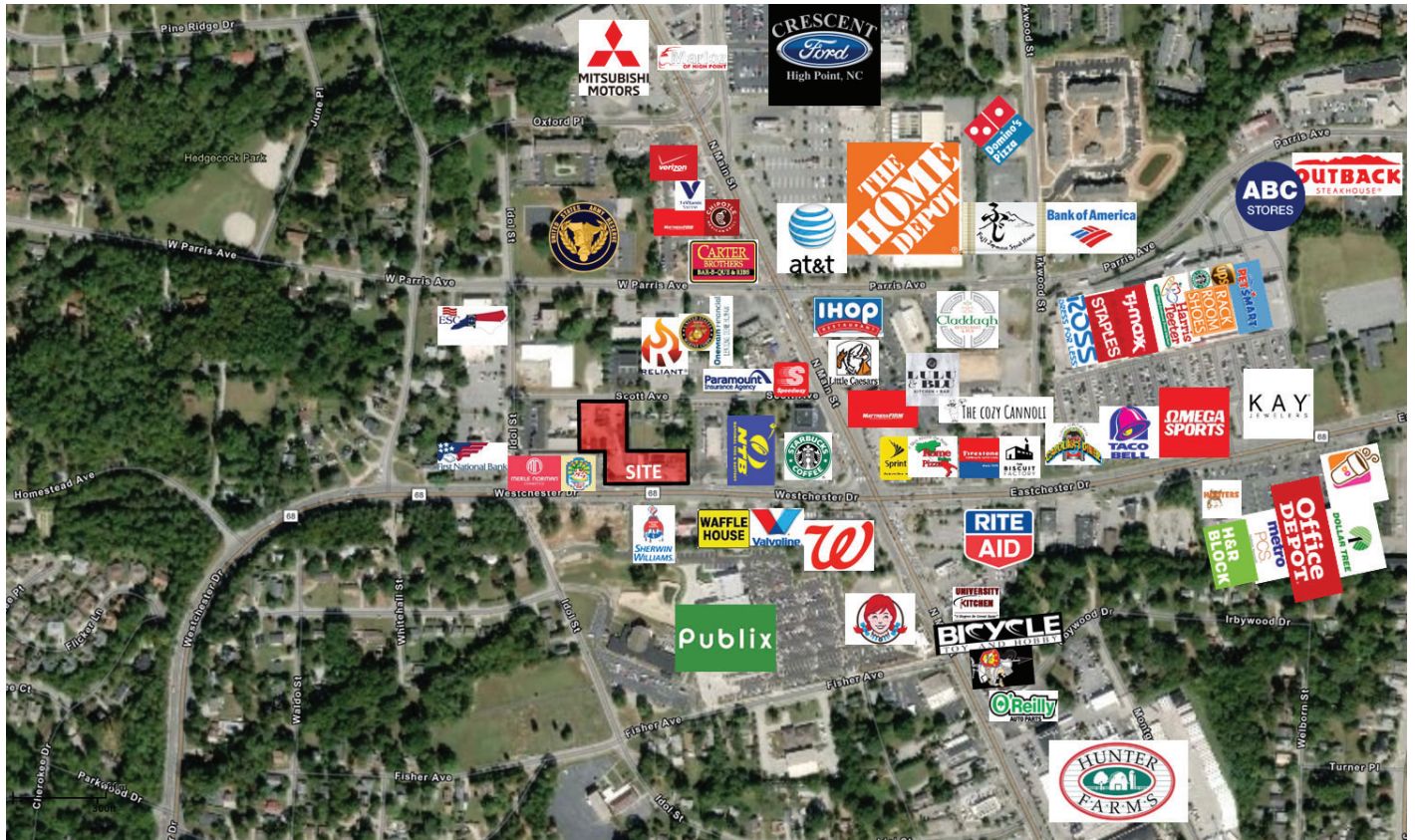
Electrical	City of HP	Sewer	City of HP	Heat	Yes
Water	City of HP	Air	Yes	Gas	PNG

TAX INFORMATION

Zoning	CU-GB
---------------	-------

PRICING & TERMS

Price	\$1,650,000.00
--------------	----------------



LOCATION FEATURES

- Access via Westchester Drive and Scott Avenue
- Approximately 305' Feet of Road Frontage on Westchester
- Across from High Points New Publix and Walgreens

DEMOGRAPHICS (2018)

	1 MILE	2 MILES	3 MILES
TOTAL POPULATION	8,094	29,544	58,455
NUMBER OF HOUSEHOLDS	3,658	11,646	23,047
MEDIAN HOUSEHOLD INCOME	\$42,504	\$44,550	\$41,738