

FOR SALE: Land

# New River Lots 27 & 28

Highway 141 (Argent Blvd) & New River Parkway, Hardeeville, SC 29927



# New River Lots 27 & 28

Highway 141 (Argent Blvd) & New River Parkway, Hardeeville, SC 29927

## Executive Summary

### PROPERTY SUMMARY

**Sale Price:** \$1,200,000

**Lot Size:** 5.23 Acres



**Jasper County Zoning:**

General Commercial

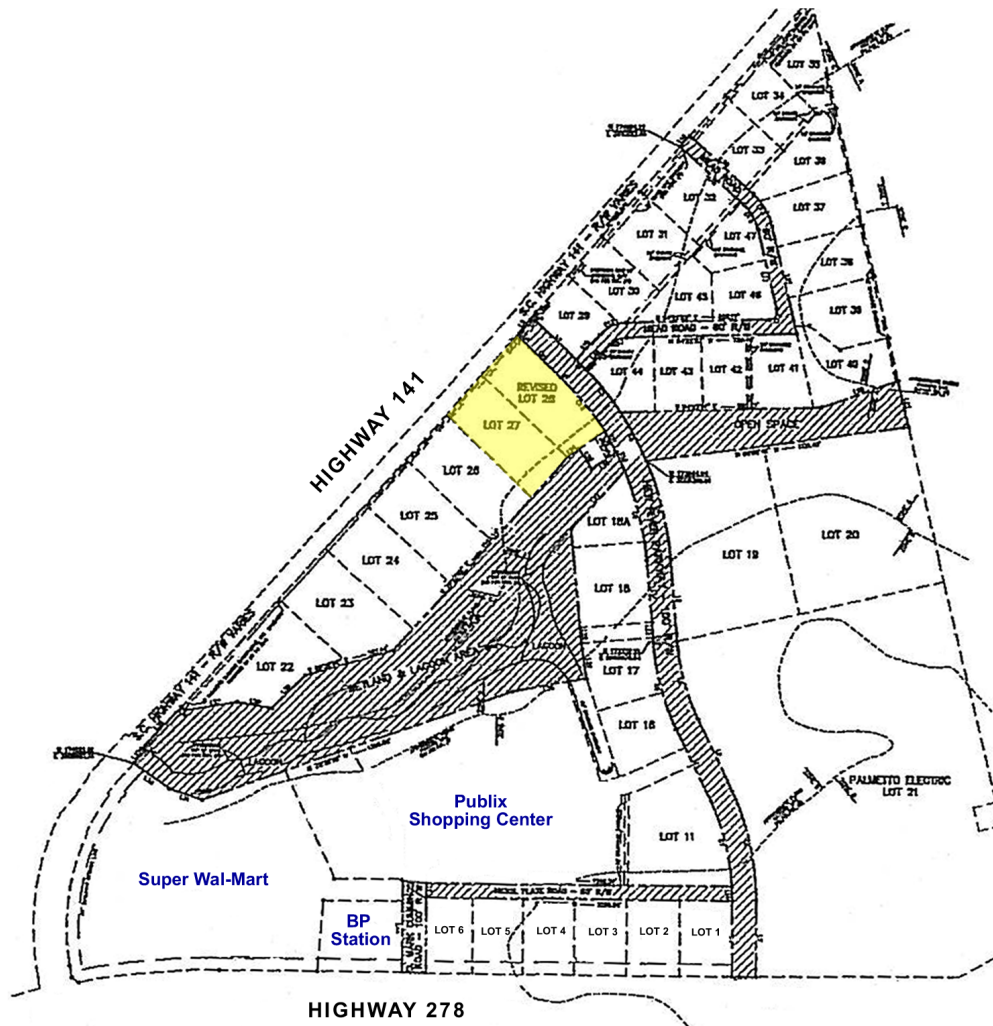
### PROPERTY HIGHLIGHTS

- 5.23 Acre lot fronts on Highway 141 (Argent Blvd) in New River Center
- Close proximity to Sun City, University of South Carolina Beaufort Campus, the New River Auto Mall, Publix and Wal-Mart
- Short drive to I-95, Bluffton, Savannah, Beaufort and Hilton Head Island

# New River Lots 27 & 28

Highway 141 (Argent Blvd) & New River Parkway, Hardeeville, SC 29927

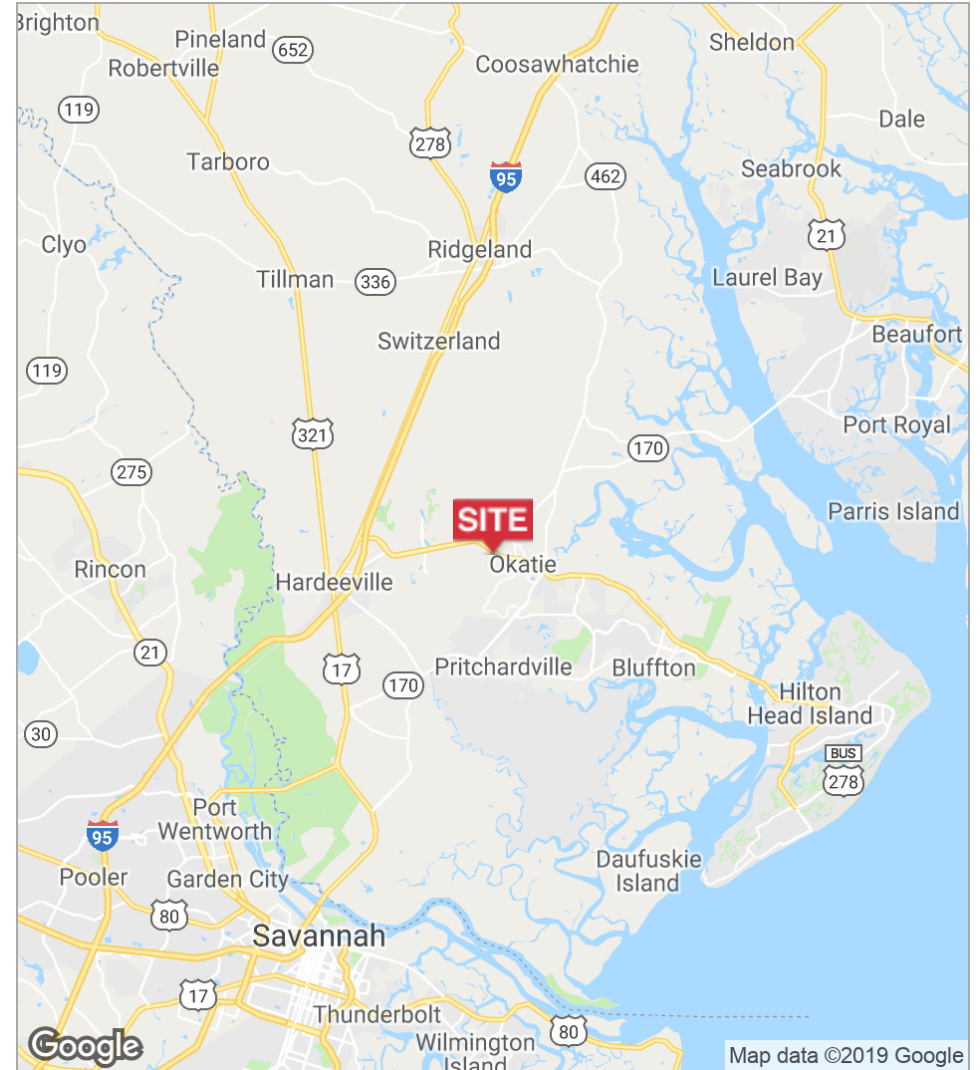
## Site Plan



# New River Lots 27 & 28

Highway 141 (Argent Blvd) & New River Parkway, Hardeeville, SC 29927

## Location Maps



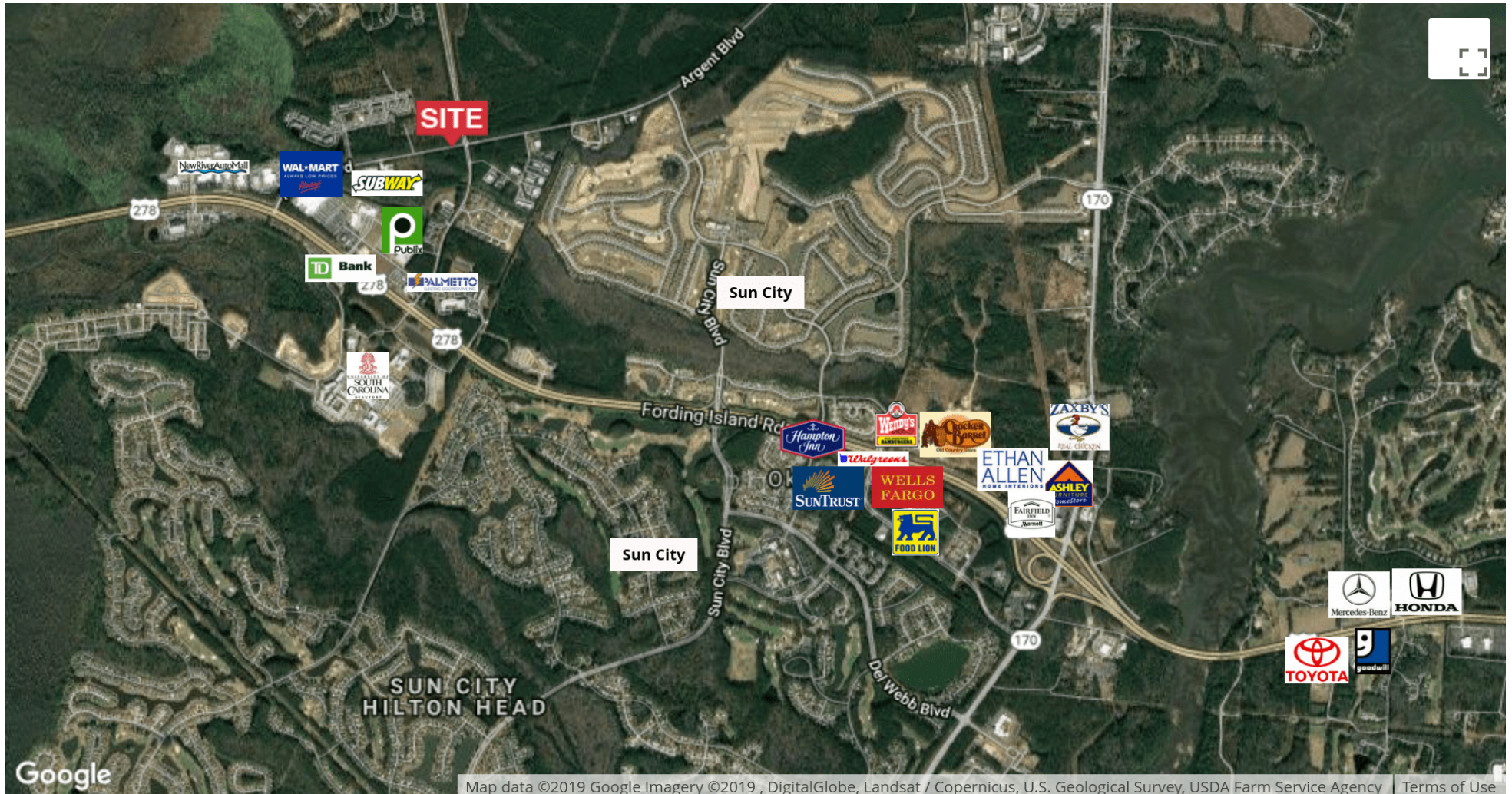
1227 May River Road, Suite 100 | Bluffton, SC 29910 | 843.837.4460 | [naicarolinacharter.com](http://naicarolinacharter.com)

Baker Wilkins  
[baker@naicarolinacharter.com](mailto:baker@naicarolinacharter.com)  
O: 843.837.4460 x2  
C: 843.247.2470

# New River Lots 27 & 28

Highway 141 (Argent Blvd) & New River Parkway, Hardeeville, SC 29927

## Retailer Map



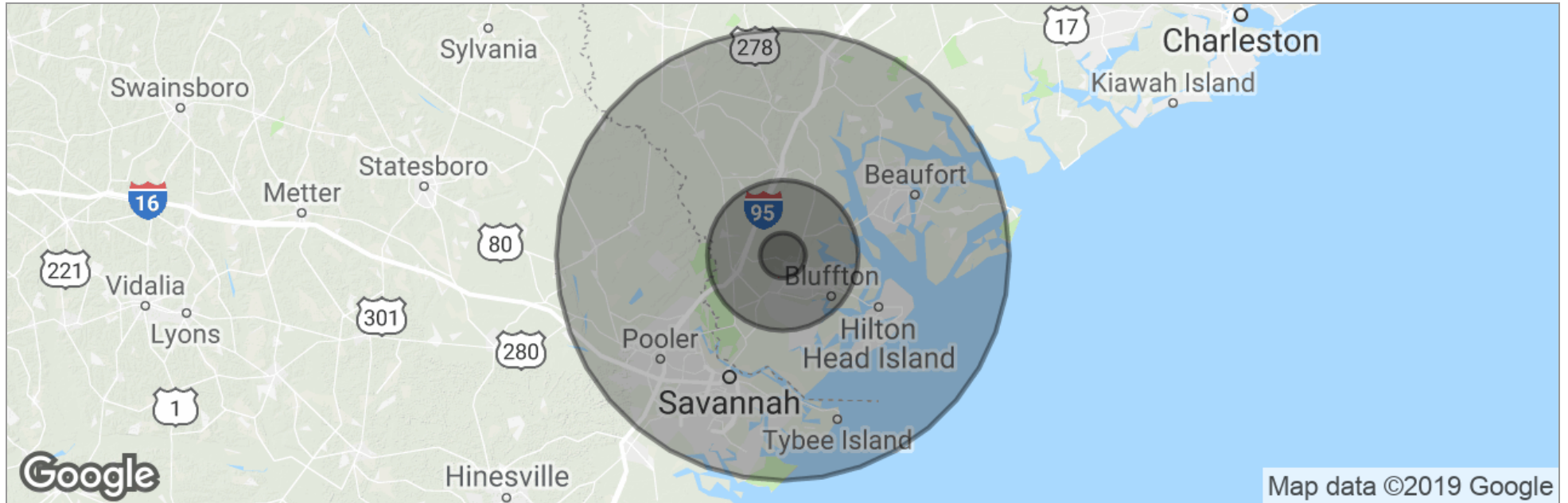
1227 May River Road, Suite 100 | Bluffton, SC 29910 | 843.837.4460 | [naicarinacharter.com](http://naicarinacharter.com)

Baker Wilkins  
[baker@naicarinacharter.com](mailto:baker@naicarinacharter.com)  
O: 843.837.4460 x2  
C: 843.247.2470

# New River Lots 27 & 28

Highway 141 (Argent Blvd) & New River Parkway, Hardeeville, SC 29927

## Demographics Map



	<b>3 Miles</b>	<b>10 Miles</b>	<b>30 Miles</b>
Total Population	11,428	48,533	537,637
Population Density	404	154	190
Median Age	65.6	42.9	37.3
Median Age (Male)	66.0	42.7	36.4
Median Age (Female)	65.0	42.8	38.1
Total Households	6,167	20,127	209,949
# of Persons Per HH	1.9	2.4	2.6
Average HH Income	\$73,925	\$74,272	\$67,205
Average House Value	\$275,794	\$294,992	\$284,785

*\* Demographic data derived from 2010 US Census*

1227 May River Road, Suite 100 | Bluffton, SC 29910 | 843.837.4460 | [naicarolinacharter.com](http://naicarolinacharter.com)

Baker Wilkins  
[baker@naicarolinacharter.com](mailto:baker@naicarolinacharter.com)  
 O: 843.837.4460 x2  
 C: 843.247.2470