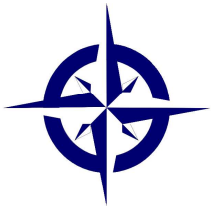
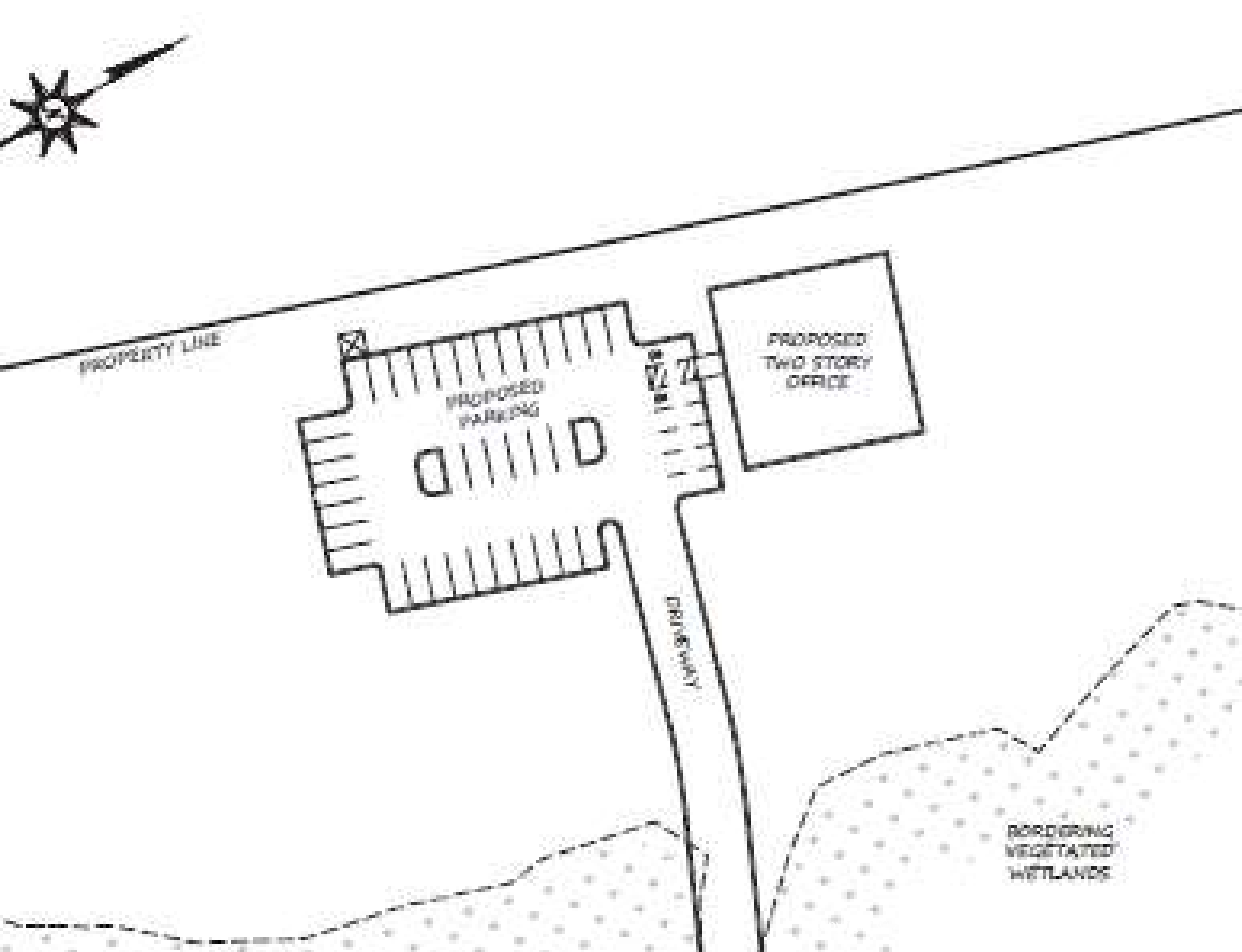


+/- 17.24 ACRE DEVELOPMENT SITE- ROUTE 1

450 Washington Street | Wrentham | Massachusetts

781.551.8888



Atlantic Commercial
Real Estate, LLC

Featuring excellent highway access and possible Route 1 signage, this site consists of approximately 1 Acre of buildable area.

Office: 781.551.8888 | Fax: 781.551.8880 | 60 Guild Street | Norwood, MA 02062

Mark Kearins

781.551.8888 x1

MK@atlantire.com

David Linehan

781.551.8888 x16

DL@atlantire.com

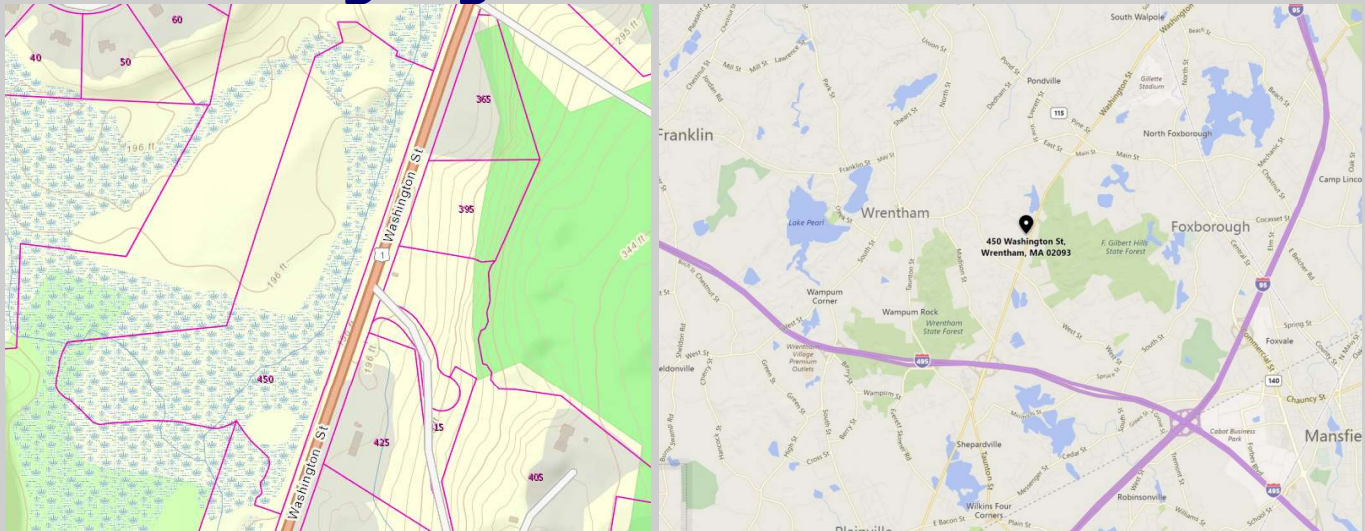
781.551.8888

450 Washington Street—Route 1

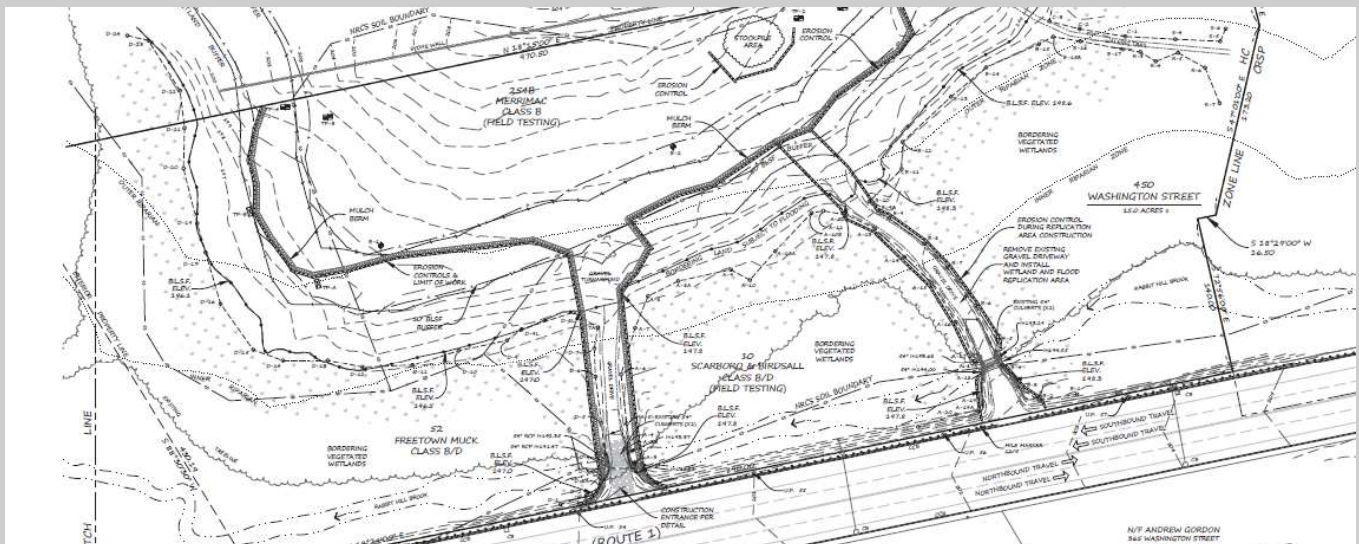
Wrentham, Massachusetts

781.551.8888

Location Highlights



Zoning: Commercial
Traffic Count: +/- 32,725
Possible Uses: Subject to Special Permit



Atlantic Commercial
Real Estate, LLC

Atlantic Commercial Real Estate, LLC

60 Guild Street

Norwood, MA 02062

Office: 781.551.8888

Fax: 781.551.8880

atlanticre.com

Copyright © 2013 Atlantic Commercial Real Estate, LLC