

NOW LEASING: OFFICE OR RETAIL SPACES
15003 INWOOD ROAD, ADDISON, TX 75001

INDUSTRIAL REAL ESTATE BROKERAGE

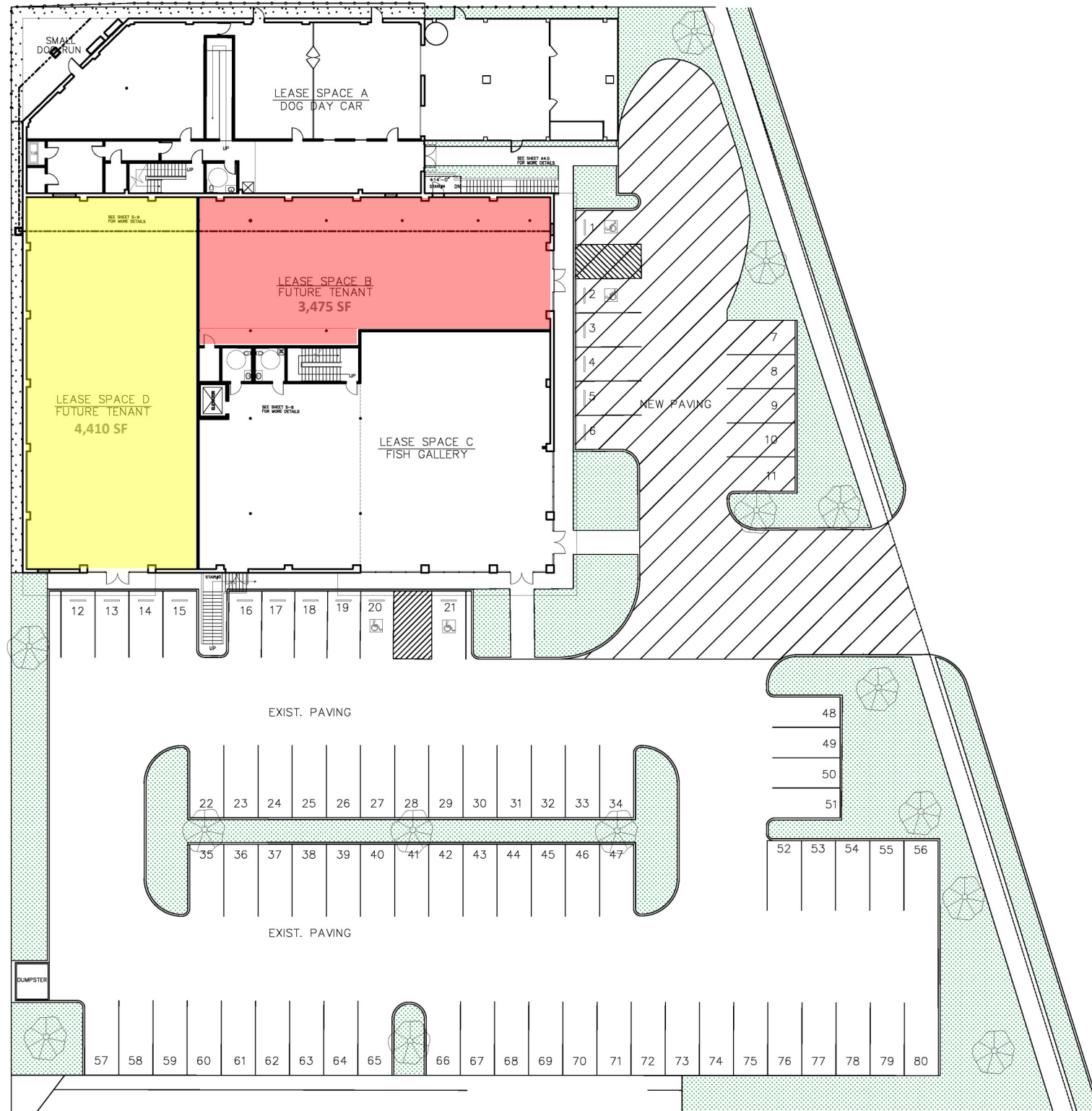
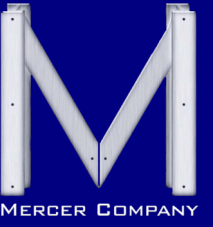
WWW.MERCER-COMPANY.COM



NOW LEASING: OFFICE OR RETAIL SPACES
15003 INWOOD ROAD, ADDISON, TX 75001

INDUSTRIAL REAL ESTATE BROKERAGE

WWW.MERCER-COMPANY.COM

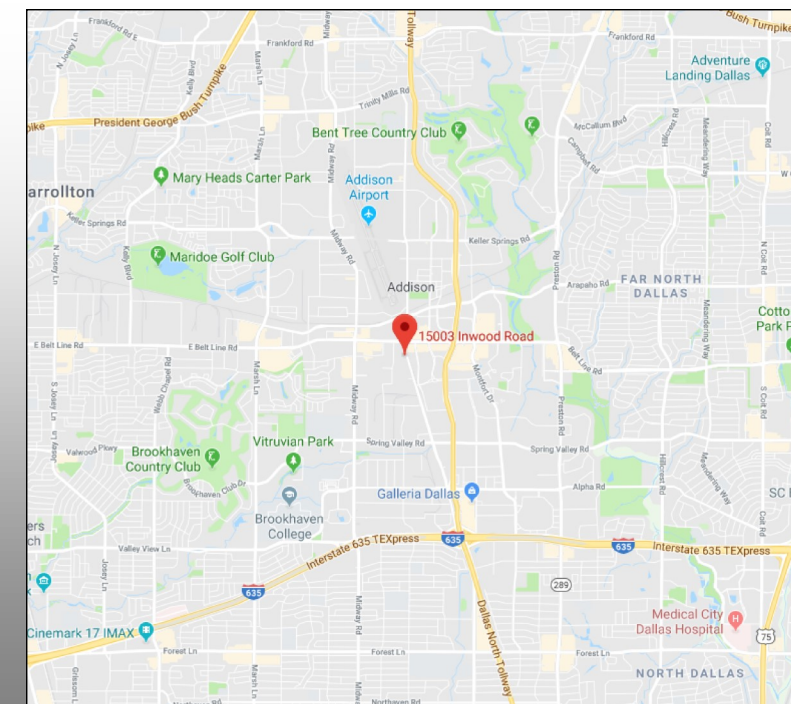


NEW PET FRIENDLY RETAIL CENTER



{NOW LEASING}

Day Care & Boarding



DETAILS

AVAILABLE FOR LEASE

- ◆ TOTAL SF: 26,000
- ◆ OUTDOOR DOG RUN: 2,000 SF
- ◆ VACANT SPACES: 3
 - ◆ 500 SF EXECUTIVE OFFICE SPACE
 - ◆ 3,475 SF RETAIL SPACE
 - ◆ 4,410 SF OFFICE SPACE
- ◆ ANCHORING TENANTS: FISH GALLERY & YARD DOG
- ◆ SEPARATELY METERED ELECTRICAL & WATER
- ◆ LANDLORD OCCUPIED PROPERTY
- ◆ EST. SHELL DELIVERY: 10/01/2019

DAVID WILGANOWSKI

CELL 214.903.6791

DWILGANOWSKI@MERCER-COMPANY.COM

DAVID WILGANOWSKI

CELL 214.903.6791

DWILGANOWSKI@MERCER-COMPANY.COM

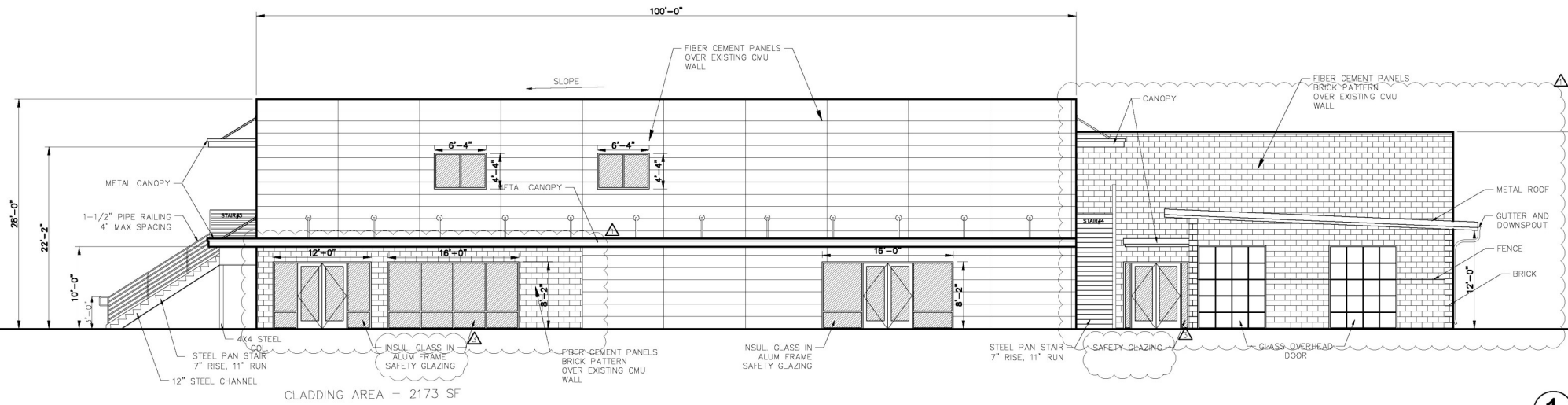
NOW LEASING: OFFICE OR RETAIL SPACES
15003 INWOOD ROAD, ADDISON, TX 75001

INDUSTRIAL REAL ESTATE BROKERAGE

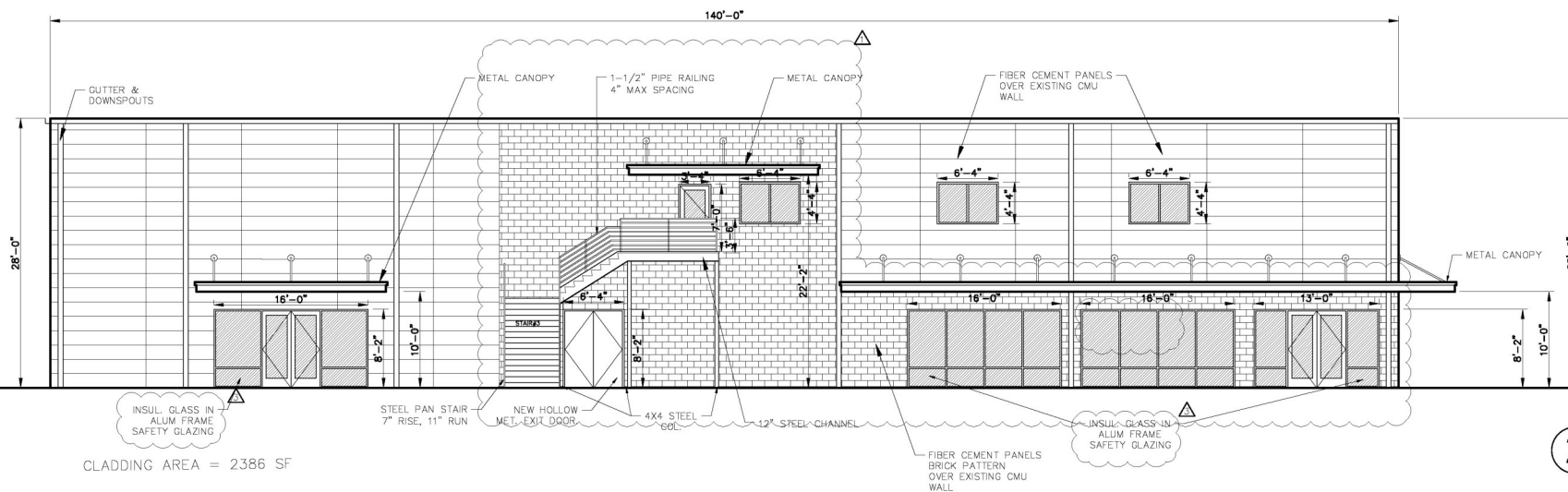
WWW.MERCER-COMPANY.COM



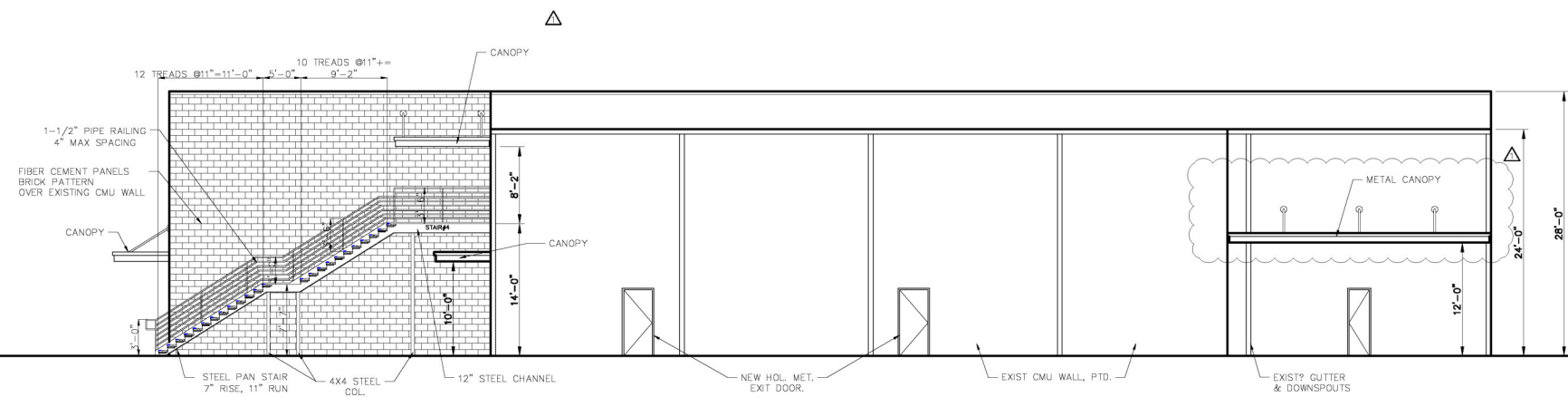
The information contained herein has been given to us by the owner of the property or other sources we deem reliable. We have no reason to doubt its accuracy, but we do not guarantee it. All information should be verified before purchase or lease.



1 EAST ELEVATION
 SCALE: 1/8"=1'-0"



2 SOUTH ELEVATION
 SCALE: 1/8"=1'-0"



3 NORTH ELEVATION
 SCALE: 1/8"=1'-0"