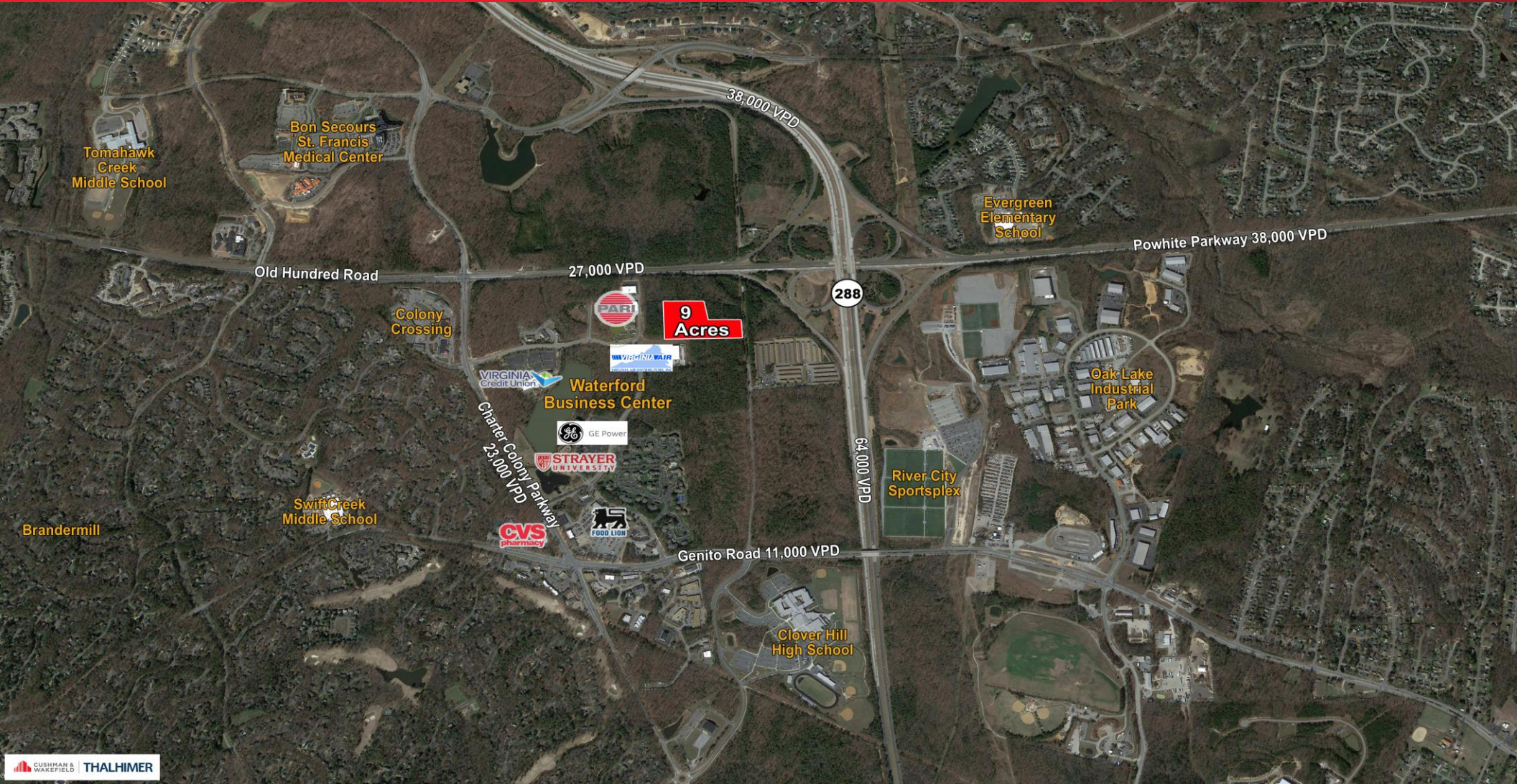




LOTS FOR SALE OR BUILD TO SUIT Waterford Business Center

2500 Waterford Lake Drive | Chesterfield County | VA



For more information, contact:

ISAAC DEREGIBUS
First Vice President
604 397 3426
isaac.deregibus@thalhimer.com

Thalhimer Center
11100 W. Broad Street
Glen Allen, VA 23060
www.thalhimer.com

Independently Owned and Operated / A Member of the Cushman & Wakefield Alliance

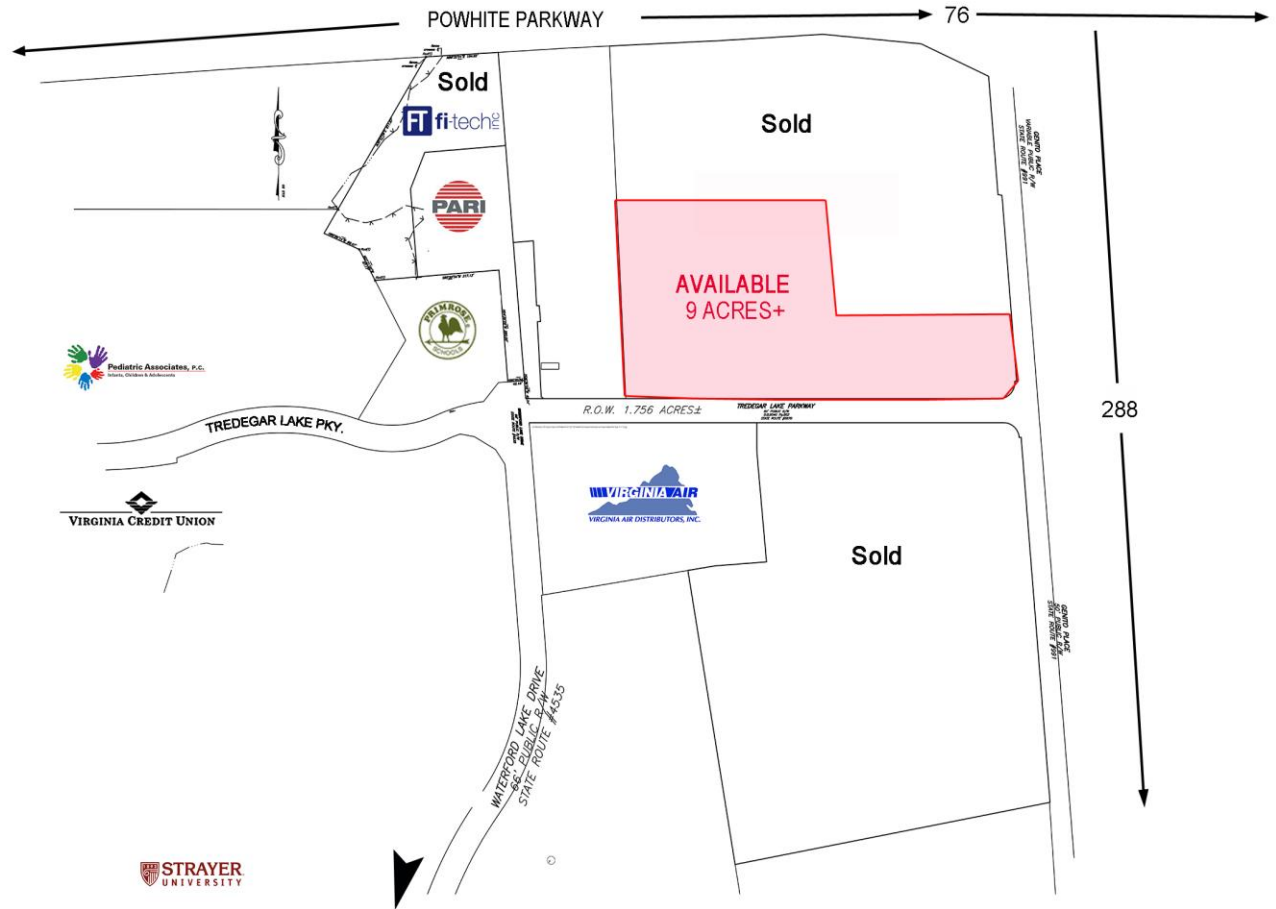
Cushman & Wakefield | Thalhimer © 2016. No warranty or representation, express or implied, is made to the accuracy or completeness of the information contained herein, and same is submitted subject to errors, omissions, change of price, rental or other conditions, withdrawal without notice, and to any special listing conditions imposed by the property owner(s). As applicable, we make no representation as to the condition of the property (or properties) in question.

LOTS FOR SALE OR BUILD TO SUIT Waterford Business Center

2500 Waterford Lake Drive | Chesterfield County | VA

Property Features

- Chesterfield's Premier Business Park
- 9 acres with flexible R&D zoning (allows for office, flex and a variety of other uses)
- Class A office & flex build-to-suits available (see proposed 50,000 – 144,000 SF buildings attached)
- Controlled park setting
- Excellent access - adjacent to I-288 and Powhite Parkway interchange
- 20 minutes to Ft. Lee
- 23 minutes to Short Pump
- 12 minutes to downtown
- Call agent for pricing



Join:



For more information, contact:

ISAAC DEREGBUS
First Vice President
604 397 3426
isaac.deregibus@thalhimer.com

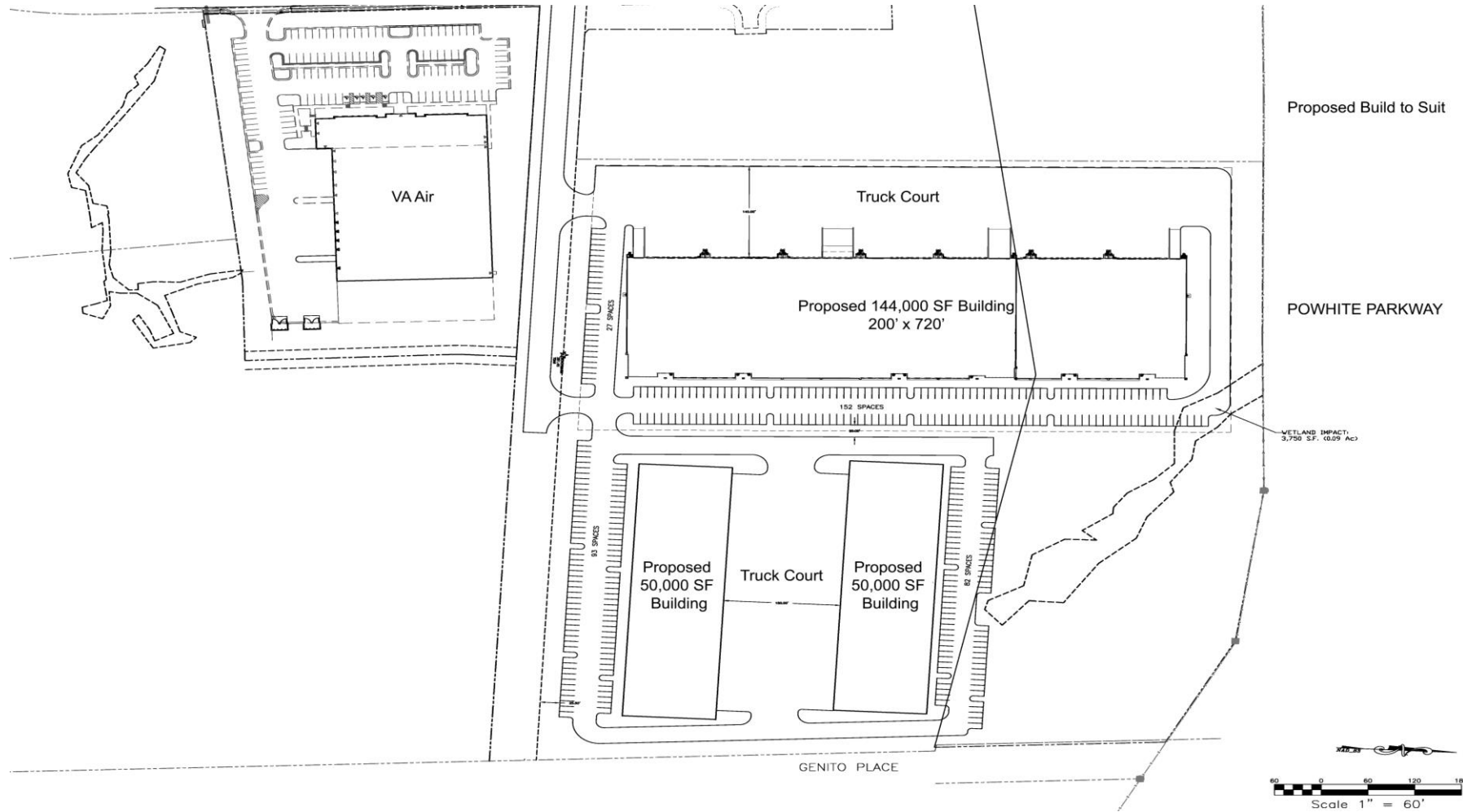
Thalhimer Center
11100 W. Broad Street
Glen Allen, VA 23060
www.thalhimer.com



THALHIMER

LOTS FOR SALE OR BUILD TO SUIT Waterford Business Center

2500 Waterford Lake Drive | Chesterfield County | VA



For more information, contact:

ISAAC DEREGBUS
First Vice President
604 397 3426
isaac.deregbus@thalhimer.com

Thalhimer Center
11100 W. Broad Street
Glen Allen, VA 23060
www.thalhimer.com

Independently Owned and Operated / A Member of the Cushman & Wakefield Alliance

Cushman & Wakefield | Thalhimer © 2016. No warranty or representation, express or implied, is made to the accuracy or completeness of the information contained herein, and same is submitted subject to errors, omissions, change of price, rental or other conditions, withdrawal without notice, and to any special listing conditions imposed by the property owner(s). As applicable, we make no representation as to the condition of the property (or properties) in question.