



PROPERTY HIGHLIGHTS

- Approximately 0.42 acres available for sale in the heart of Kent, OH
- Located at the corner of Day St. & Depeyster St. Directly across the street from the brand new 345 Flats student housing building. Totaling 155 units
- Within walking distance of Kent State University - 30,167 students (Kent Campus, 2016)

TRADE AREA DEMOGRAPHICS

	POPULATION	AVG. HH INCOME	DAYTIME EMPLOYEES
3 Mile	43,415	\$64,278	24,195
5 Miles	89,763	\$73,336	36,223
10 Miles	339,417	\$67,522	206,504
15 Minute	322,859	\$67,202	204,567

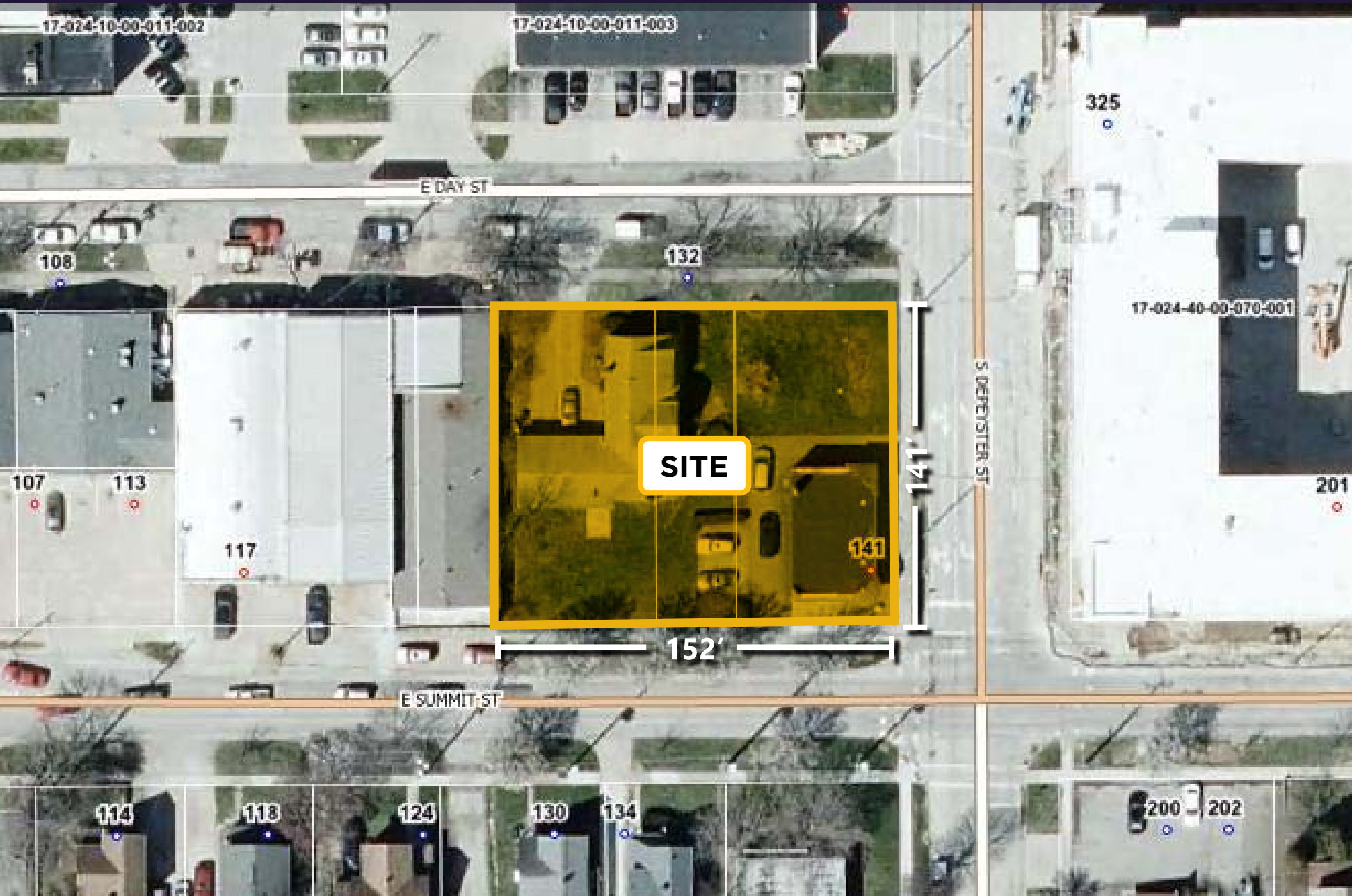
QUICK LINKS *(click to view)*

3401 Richmond Rd., Suite 200
Beachwood, OH 44122

www.passovgroup.com

FOR MORE INFORMATION, CONTACT: 216.831.8100

Catherine Lueckel / clueckel@passovgroup.com







Catherine Lueckel / clueckel@passovgroup.com