

FOR LEASE

WORLDS FAIR CORPORATE CENTER

12

WORLDS FAIR DRIVE – UNIT D
Somerset, NJ



SPECIFICATIONS

Available space:	±7,500 RSF
Warehouse size:	±5,350 RSF
Office size:	±2,150 RSF
Year built:	1981
Ceiling height:	18'
Loading:	2 tailboard doors
Power:	200 amps
Sprinkler:	Wet



CONTACT US

MINDY LISSNER, SIOR

Executive Vice President
+1 732 509 2831
mindy.lissner@cbre.com

ROBERT PINE

Vice President
+1 732 509 2830
robert.pine@cbre.com

DAVID GHERIANI

First Vice President
+1 732 509 8942
david.gheriani@cbre.com

www.cbre.com

CBRE

FIRST
INDUSTRIAL
REALTY TRUST

FOR LEASE WORLDS FAIR CORPORATE CENTER

12
WORLDS FAIR DRIVE – UNIT D
Somerset, NJ

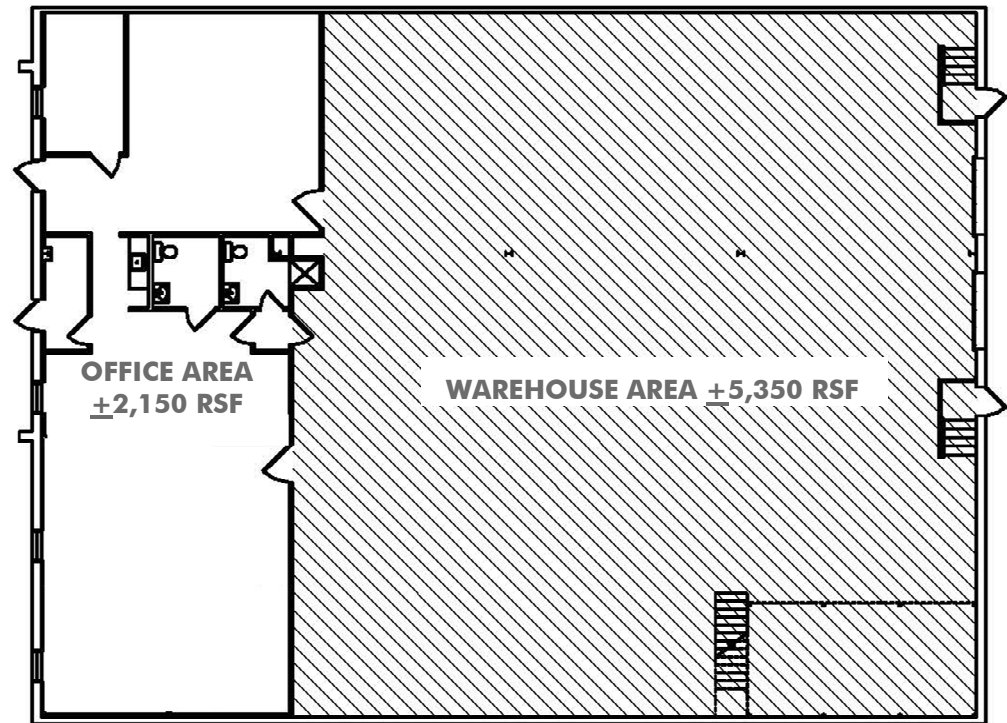


FLOOR PLAN

- + Unit D: $\pm 7,500$ RSF available
- + Office: $\pm 2,150$ RSF
- + Warehouse: $\pm 5,350$ RSF
- + Rental Rate: \$10.00 NNN PSF

COMMENTS

- + 1 per 1,000 car parking
- + Availability – 30 Days
- + Access to I-287, Route 27, New Jersey Turnpike and the Garden State Parkway



© 2020 CBRE, Inc. All rights reserved. This information has been obtained from sources believed reliable, but has not been verified for accuracy or completeness. You should conduct a careful, independent investigation of the property and verify all information. Any reliance on this information is solely at your own risk. CBRE and the CBRE logo are service marks of CBRE, Inc. All other marks displayed on this document are the property of their respective owners. Photos herein are the property of their respective owners. Use of these images without the express written consent of the owner is prohibited.

CBRE

FIRST
INDUSTRIAL
REALTY TRUST