

UPPER EAST
SIDE

NEW YORK
NY

1302 **FIRST** AVENUE



CONCEPTUAL RENDERING

SPACE DETAILS

LOCATION

Northeast corner of East 70th Street

APPROXIMATE SIZE

Ground Floor 1,880 SF

POSSESSION

Immediate

TERM

Long term

FRONTAGE

32 FT on First Avenue

13 FT on East 70th Street

CEILING HEIGHT

Ground Floor 13 FT

SITE STATUS

Formerly Bolton's

NEIGHBORS


sweetgreen, Starbucks, Apple Nails, Papyrus, Just Salad, Uni K Wax, Morton Williams Supermarket, DIG, Coffee Inn and Tasti D-Lite

COMMENTS

All non-cooking uses accepted

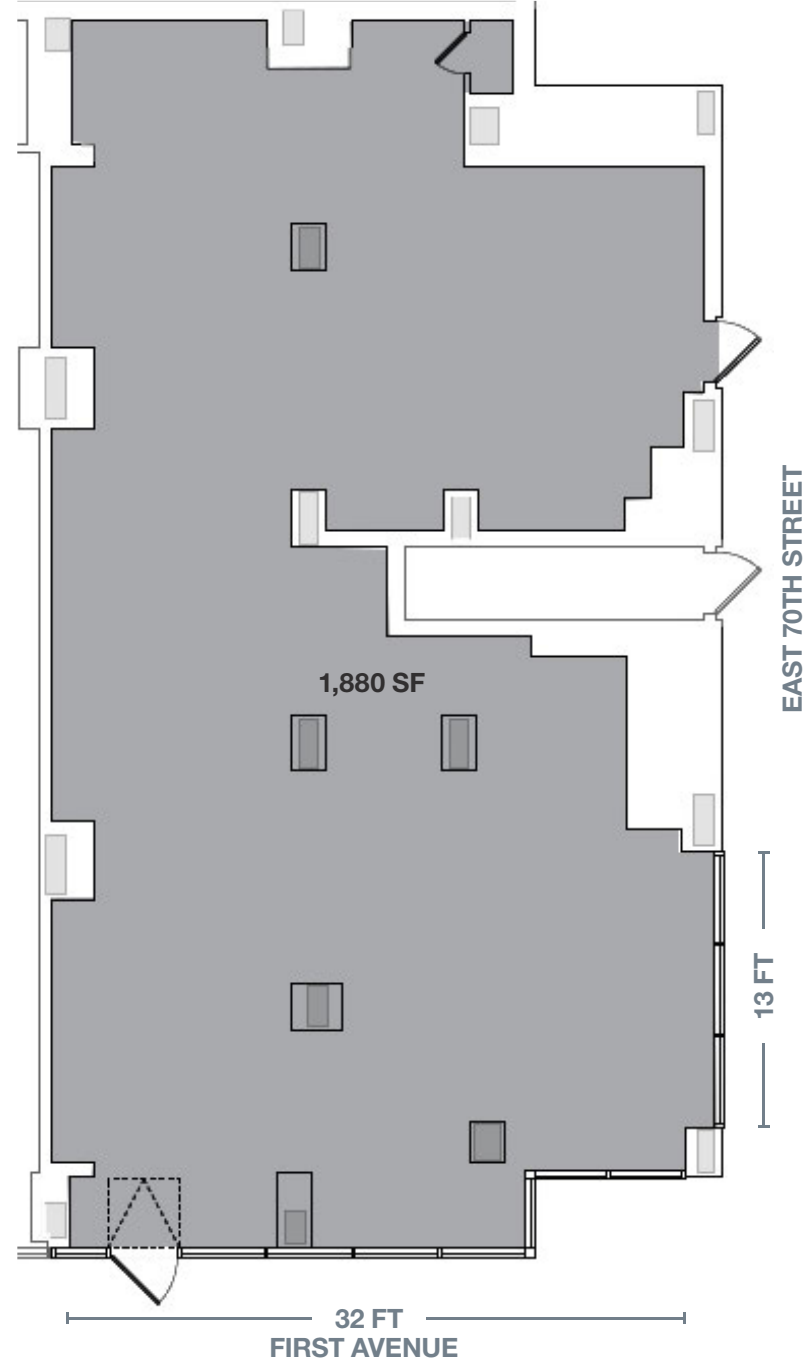
Outdoor seating available

Corner retail space one block from Weill Cornell Medical Center, New York Presbyterian, Memorial Sloan-Kettering Cancer Center and The Rockefeller University

Easily accessible from the Second Avenue  train station with entrances on both East 70th and 72nd Streets

Expansive wraparound glass frontage

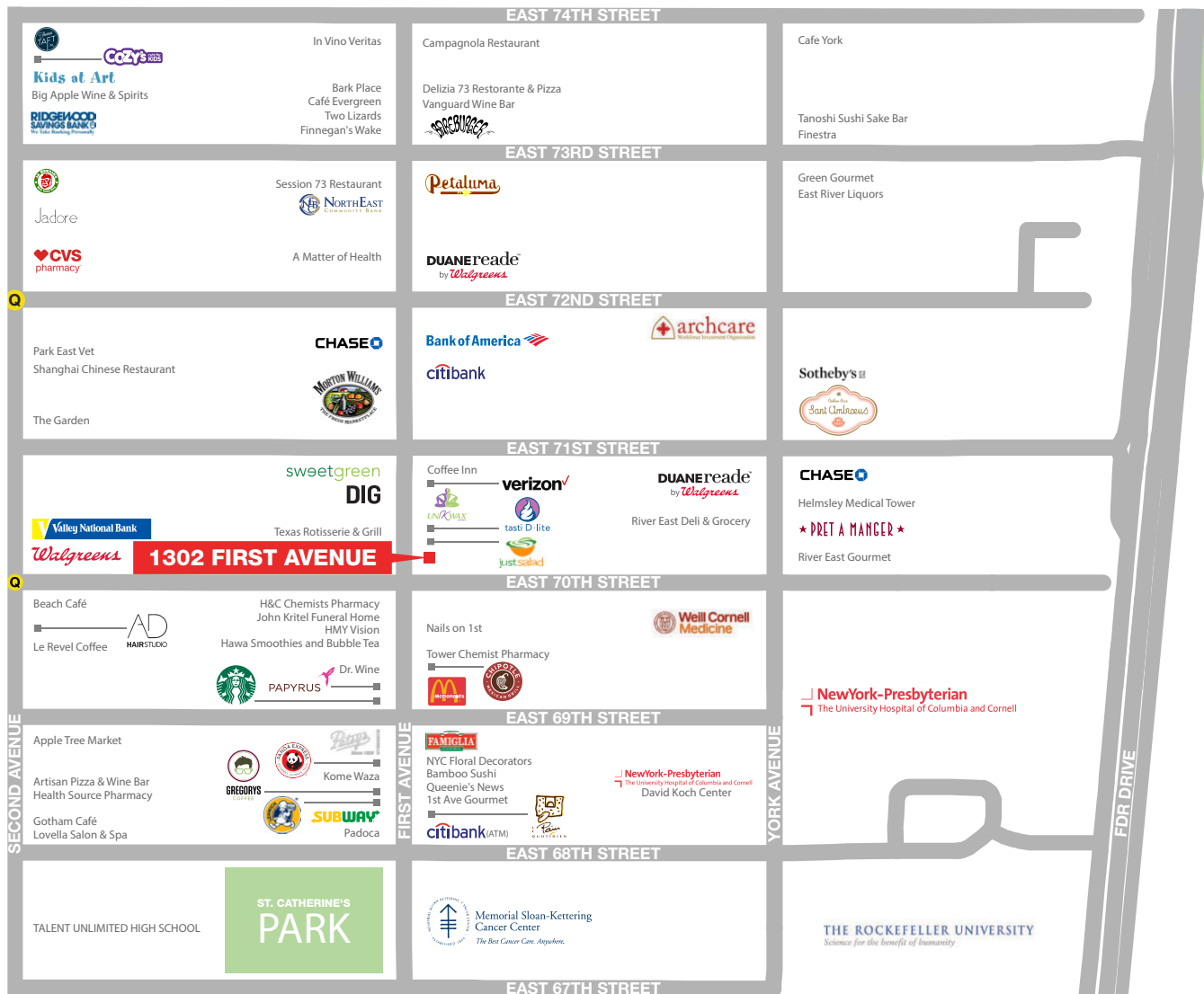
GROUND FLOOR



AREA NEIGHBORS



AREA RETAIL



CONTACT EXCLUSIVE AGENTS

GARY ALTERMAN
212.916.3367
gary.alterman@ngkf.com

CARLY GELLER
212.309.2829
carly.geller@ngkf.com



NGKF.COM

© 2019 NEWMARK KNIGHT FRANK RETAIL. The information contained herein has been obtained from sources deemed reliable but has not been verified and no guarantee, warranty or representation, either express or implied, is made with respect to such information. Terms of sale or lease and availability are subject to change or withdrawal without notice.