

# PORT SOUTH

Federal Boulevard  
Carteret, NJ

FOR LEASE

PHASE I  
CLASS A NEW  
CONSTRUCTION

[www.port-south.com](http://www.port-south.com)

200

FEDERAL BOULEVARD  
BUILDING A  
CARTERET, NEW JERSEY

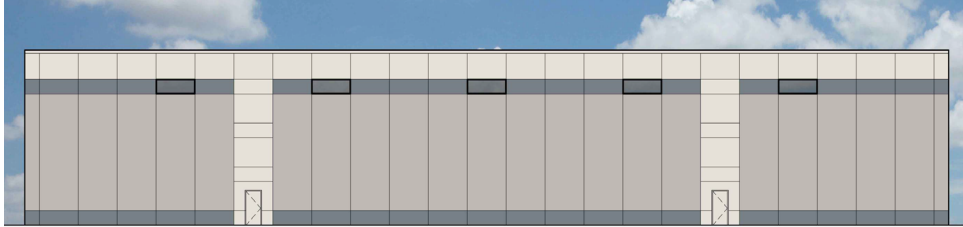
## SOUTH ELEVATION



## EAST ELEVATION



## NORTH ELEVATION



## WEST ELEVATION



DELIVERING Q2 2021

## BUILDING HIGHLIGHTS

**50,802**

Total Sq. Ft.

**5,000**

Office Sq. Ft.

**270' x 190'**

Building Dimensions

**36'**

Ceiling Height

**11 (9' x 10')**

Dock Doors

**1**

Drive-in Door

**52' x 52'**

Column Spacing

**53**

Car Parking Spaces

**At Dock Doors**

Trailer Parking Spaces

**ESFR**

Sprinklers

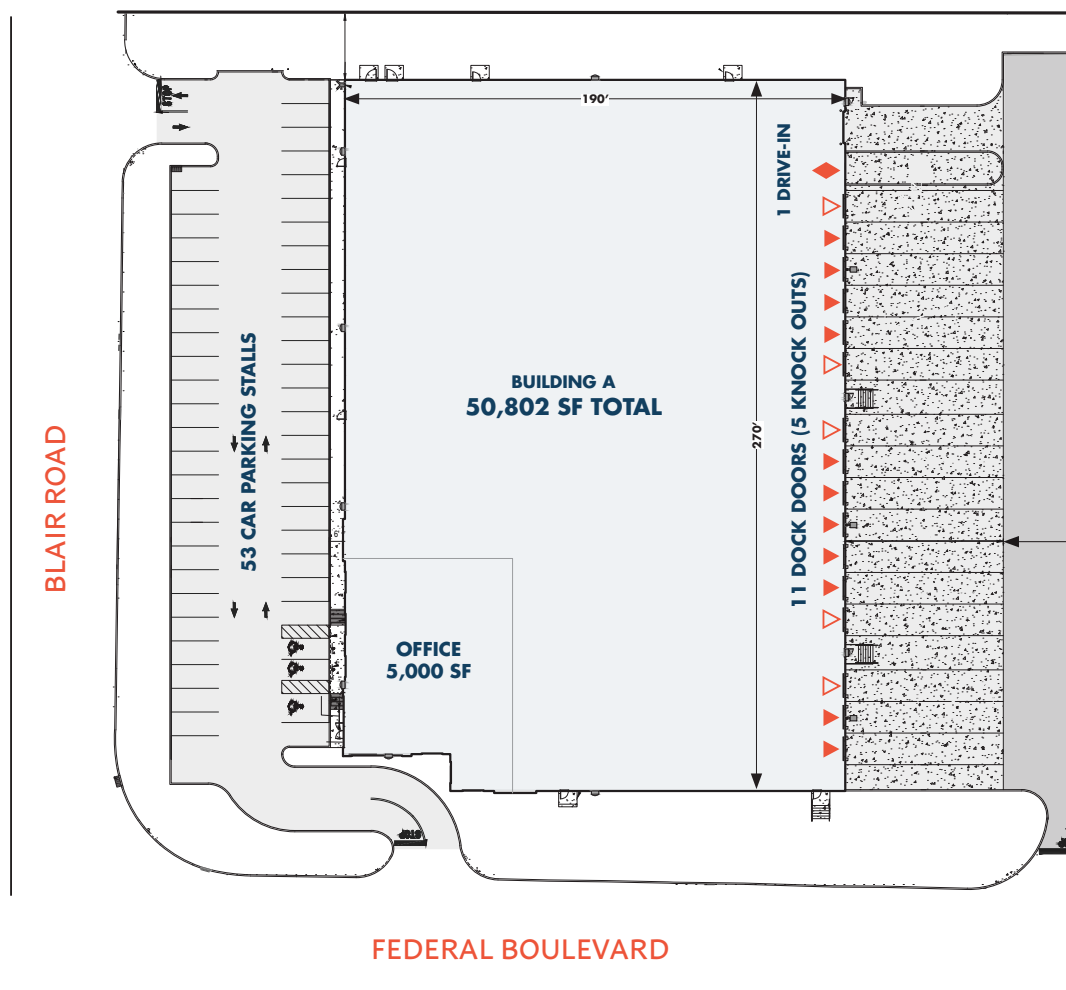
**1,200 amps, 480/277 volts,**

**3-phase, 4-wire**

Power

**CBRE**

DELIVERING Q2 2021



**THOMAS F. MONAHAN**  
Vice Chairman  
+1 201 712 5610  
thomas.monahan@cbre.com

**STEPHEN D'AMATO**  
Senior Vice President  
+1 201 712 5616  
stephen.damato@cbre.com

**LARRY SCHIFFENHAUS**  
Senior Vice President  
+1 201 712 5809  
larry.schiffenhaus@cbre.com

[www.port-south.com](http://www.port-south.com)



# PORT SOUTH

Federal Boulevard  
Carteret, NJ

FOR LEASE

PHASE I  
CLASS A NEW  
CONSTRUCTION

[www.port-south.com](http://www.port-south.com)

200

FEDERAL BOULEVARD  
BUILDING B  
CARTERET, NEW JERSEY

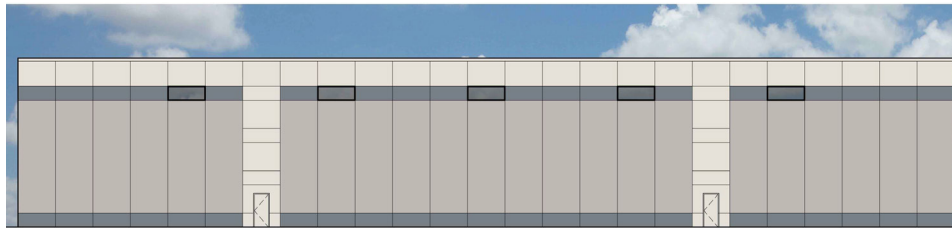
## SOUTH ELEVATION



## WEST ELEVATION



## NORTH ELEVATION



## EAST ELEVATION



DELIVERING Q2 2021

## BUILDING HIGHLIGHTS

**54,062**  
Total Sq. Ft.

**5,400**  
Office Sq. Ft.

**270' x 200'**  
Building Dimensions

**36'**  
Ceiling Height

**11 (9' x 10')**  
Dock Doors

**1**  
Drive-in Door

**52' x 52'**  
Column Spacing

**52**  
Car Parking Spaces

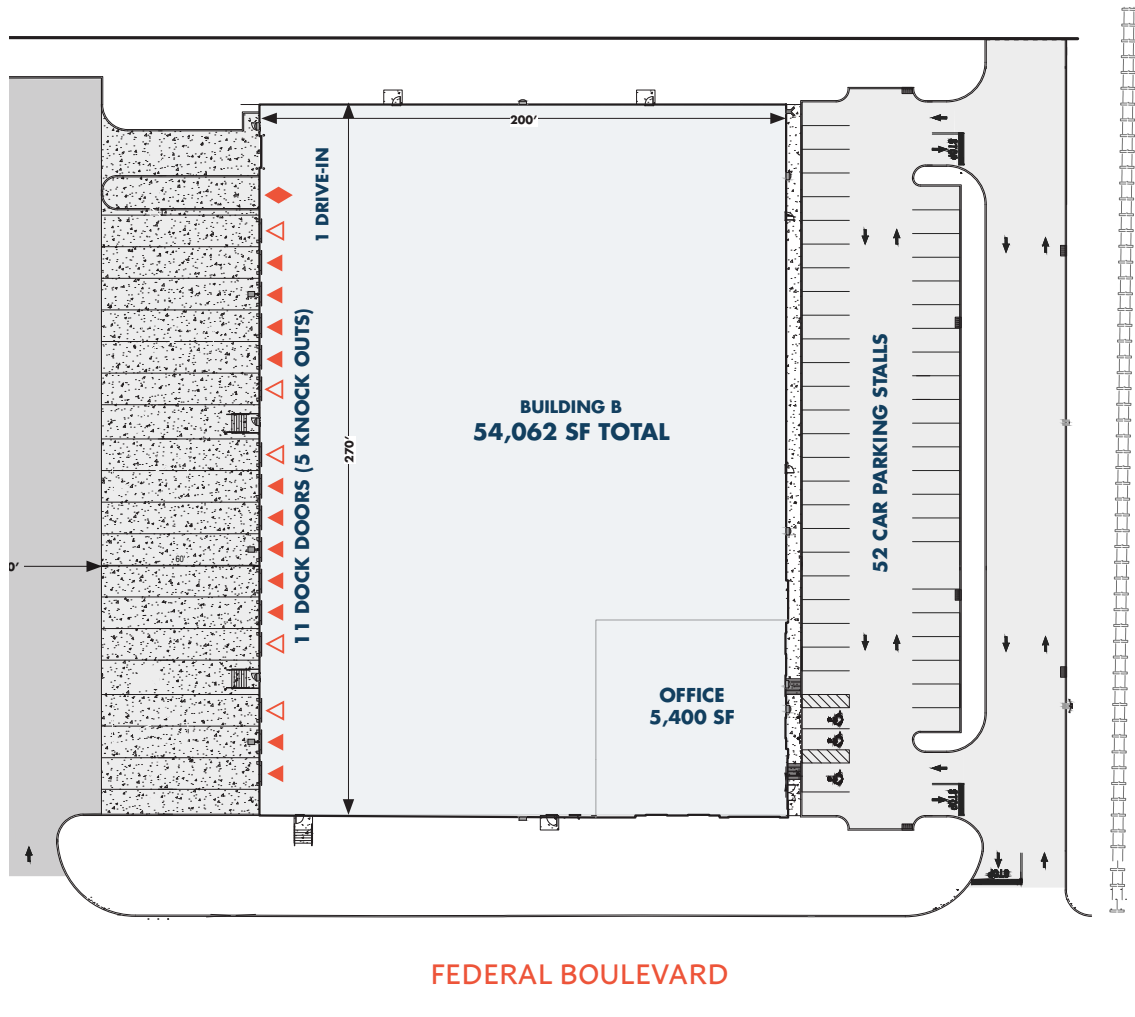
**At Dock Doors**  
Trailer Parking Spaces

**ESFR**  
Sprinklers

**1,200 amps, 480/277 volts,**  
**3-phase, 4-wire**  
Power

**CBRE**

DELIVERING Q2 2021



**THOMAS F. MONAHAN**

Vice Chairman

+1 201 712 5610

thomas.monahan@cbre.com

**STEPHEN D'AMATO**

Senior Vice President

+1 201 712 5616

stephen.damato@cbre.com

**LARRY SCHIFFENHAUS**

Senior Vice President

+1 201 712 5809

larry.schiffenhaus@cbre.com

[www.port-south.com](http://www.port-south.com)



DELIVERING Q2 2021

