

# FLEX SPACE FOR LEASE

## In the Heart of CHELSEA DISTRICT

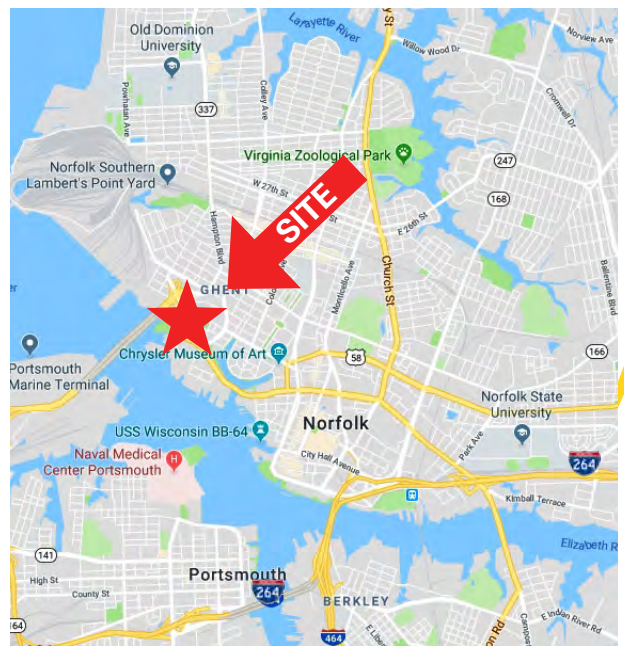
### 1229 W. Olney Road, Norfolk, VA



- 4,000 SF Available For Lease
- Retail and Warehouse Space
- Zoned I-2 (Light Industrial District)
- On-Street Parking
- Located in the Chelsea District, directly in front of Marine Hydraulics and close to the Midtown Tunnel, Fort Norfolk and the Medical Center Park.
- Lease Rate: \$7.50 psf - \$2,500/mo.

#### Demographics (2017)

	1 Mile	3 Miles	5 Miles
Population	10,014	93,685	246,933
Households	5,209	36,100	93,988
Ave. HH Inc.	\$90,862	\$66,548	\$59,962



CONTACT:

**MIKE MAHGEREFTEH**

**(757) 640-8257**

[mikemahgerefteh@harveylindsay.com](mailto:mikemahgerefteh@harveylindsay.com)

**HARVEY LINDSAY**

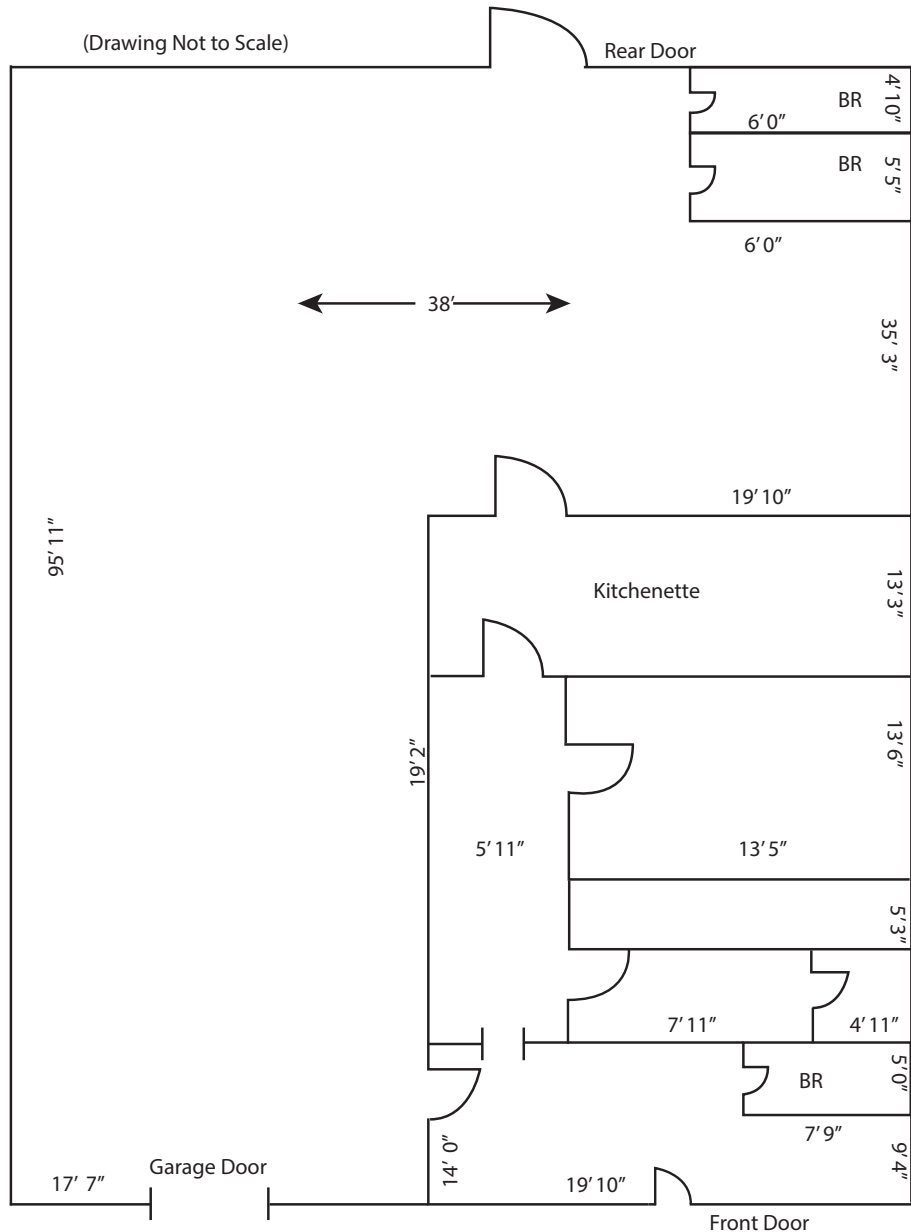
COMMERCIAL REAL ESTATE

*A Tradition of Forward Thinking*

# FLEX SPACE FOR LEASE

## In the Heart of CHELSEA DISTRICT

### 1229 W. Olney Road, Norfolk, VA



CONTACT:

**MIKE MAHGEREFTEH**

**(757) 640-8257**

[mikemahgerefteh@harveylindsay.com](mailto:mikemahgerefteh@harveylindsay.com)

**HARVEY LINDSAY**

COMMERCIAL REAL ESTATE

*A Tradition of Forward Thinking*

The information contained herein has been obtained from sources believed to be reliable but is not warranted.  
We cannot be responsible for errors, omissions, withdrawal, or prior lease or sale.

# FLEX SPACE FOR LEASE

## CHELSEA DISTRICT

### 1229 W. Olney Road, Norfolk, VA



CONTACT:

**MIKE MAHGEREFTEH**

**(757) 640-8257**

[mikemahgerefteh@harveylindsay.com](mailto:mikemahgerefteh@harveylindsay.com)

**HARVEY LINDSAY**

COMMERCIAL REAL ESTATE

*A Tradition of Forward Thinking*

The information contained herein has been obtained from sources believed to be reliable but is not warranted.  
We cannot be responsible for errors, omissions, withdrawal, or prior lease or sale.