

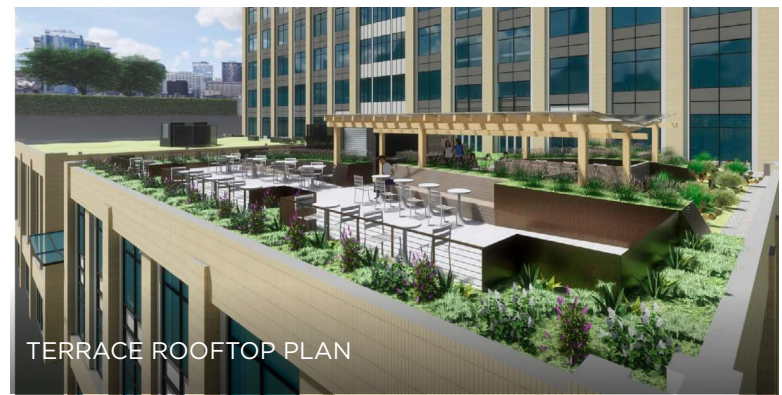


# FINANCIAL PLAZA

1125 NW COUCH STREET / PORTLAND, OR 97209



# BUILDING FEATURES

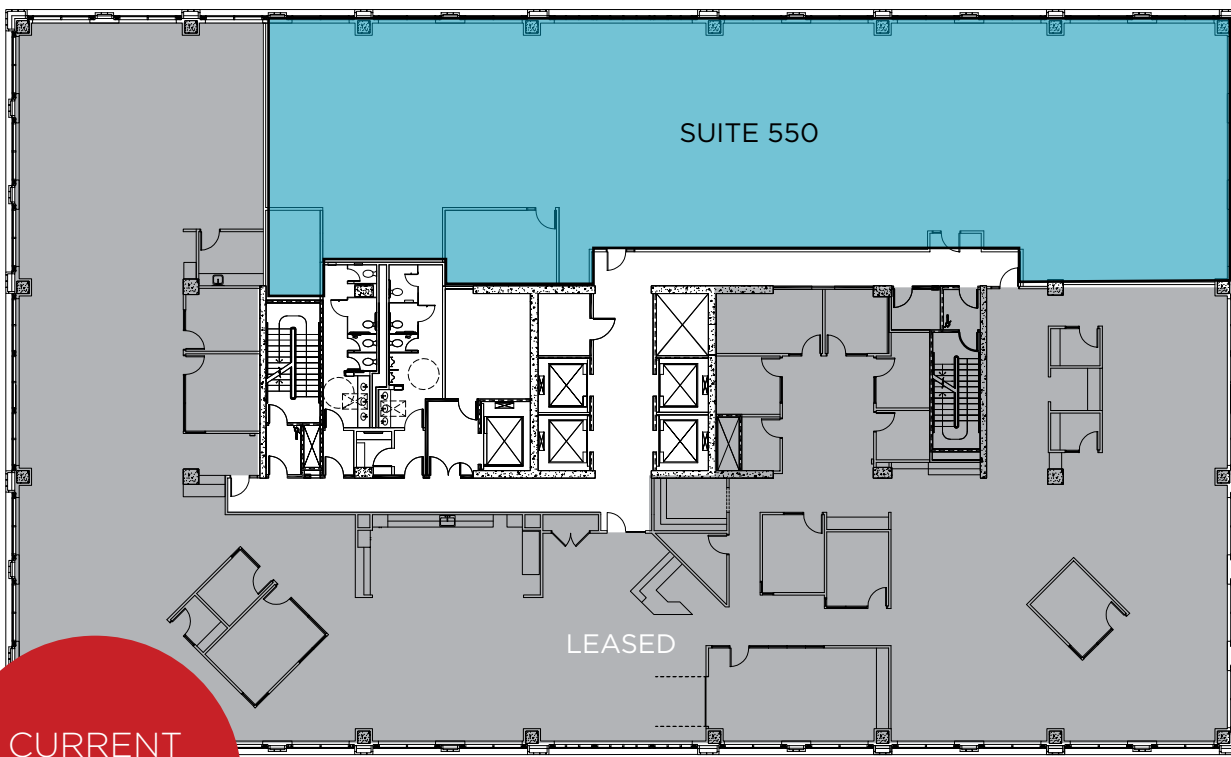


- \$34.00 per RSF NNN
- LEED Gold certified
- New on-site fitness center, showers and locker rooms
- High-tech conference room on the fourth floor
- Parking ratio of 2 per 1,000 SF in Portland's largest downtown parking garage (fully automated)
- 24 hour on-site security
- Multiple secure bike parking rooms
- 10' finished ceiling heights throughout the building
- Intex operable windows with 10' head heights provide abundant natural light
- Blowout, Rachele M and Anthropologie on-site
- Whole Foods, Little Big Burger, Peet's Coffee, Powell's Books, and numerous other retail amenities and services all surround the building
- Easy access to I-405, I-5, I-84 freeways
- EV car charging stations
- On Portland streetcar line



**FIFTH FLOOR**  
7,588 RSF

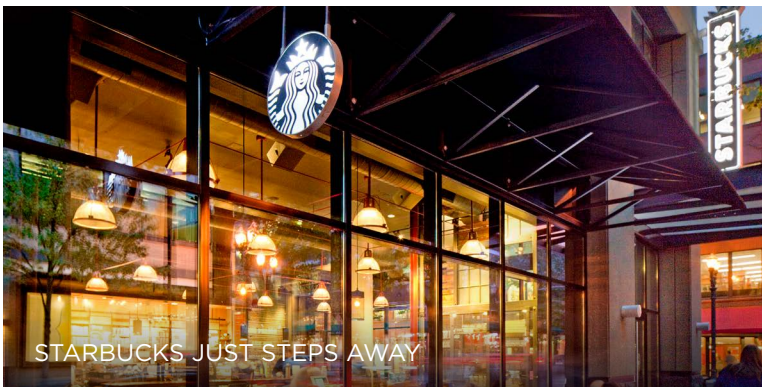
---



CURRENT AVAILIBILITIES

**FOURTH FLOOR**  
1,493 RSF

---





MAP  
KEY

- Bar
- Food
- Hotel
- Retail
- Culture/Entertainment
- Fitness
- Street Car Line

- 1 Powell's City of Books
- 2 Deschutes Brewery
- 3 Whole Foods
- 4 The Gerding Theater
- 5 Bamboo Sushi
- 6 Starbucks
- 7 Henry's Tavern
- 8 Blue Star Donuts
- 9 Lardo

- 10 Andina
- 11 10 Barrel Brewing
- 12 Lululemon
- 13 Toms
- 14 West Elm
- 15 The North Face
- 16 Living Room Theaters
- 17 North Park Blocks
- 18 YoYo Yogi

WALK SCORE: 100 | BIKE SCORE: 96 | TRANSIT SCORE: 93

**Dan Swift**  
 Managing Director  
 +1 503 279 1765  
 dan.swift@cushwake.com

**Lana Baldock**  
 Managing Director  
 +1 503 279 1775  
 lana.baldock@cushwake.com



No warranty or representation, expressed or implied, is made as to the accuracy of the information contained herein, and same is submitted subject to errors, omissions, change of terms, rental or other conditions, withdrawal without notice, and to any special listing conditions imposed by principals.