



SINVIN
COMMERCIAL REAL ESTATE & ADVISORY

NORTHWEST CORNER OF WEST 41ST STREET

NOTES:

- Surrounded by 237,000 daytime office workers and 43,000 local residents within a 1/2 mile
- 1 block away from Port Authority which sees 65+ million riders per year
- Dedicated 41st Street lobby with private elevator leading to the 2nd floor
- 115' of all-glass corner frontage
- Dramatic, sun-drenched space
- Great visibility

573
NINTH AVE



NEIGHBORS INCLUDE:

- POD Hotel
- Major Food Group
- Pip's Island
- TD Bank
- CitiBank
- Starbucks
- City MD
- The New York Times
- Frames Bowling Lounge
- Dunkin' Donuts
- Sticky's Finger Joint
- Duane Reade
- Port Authority
- The Food Emporium
- Kava Cafe
- Yotel
- Chipotle
- T-Mobile
- Shake Shack
- AMC Theater
- Regal Cinemas
- Dean & DeLuca
- Drybar
- Muji

DETAILS:

Ground Floor: **780 Square Feet**

2nd Floor: **4,400 Square Feet**

Frontage: **15' (ground), 115' (2nd Floor)**

Ceiling Height: **22' (Ground), 25' (2nd)**

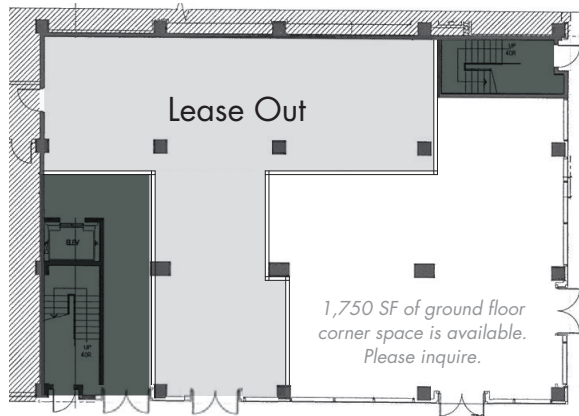
Term: **Negotiable**

Possession: **Immediate**

Asking: **Please Inquire**



Ground Floor



2nd Floor



PLEASE CONTACT:

Christopher Owles
212.604.9002
chris@sinvin.com

Sarah Shannon
646.673.8780
sarah@sinvin.com

