

FOR LEASE

2210 Del Paso Road

Sacramento, California



**CUSHMAN &
WAKEFIELD**

P R O F E S S I O N A L C E N T E R



Chad Cook, MCR, SIOR, CCIM
Senior Director
+1 916 329 1562
chad.cook@cushwake.com
Lic #01711687

Zach Mosle, CCIM
Senior Associate
+1 916 329 1543
zach.mosle@cushwake.com
Lic #01924595

Cushman & Wakefield
400 Capitol Mall, Suite 1800
Sacramento, CA 95814
+1 916 288 4800
cushmanwakefield.com

Property Highlights

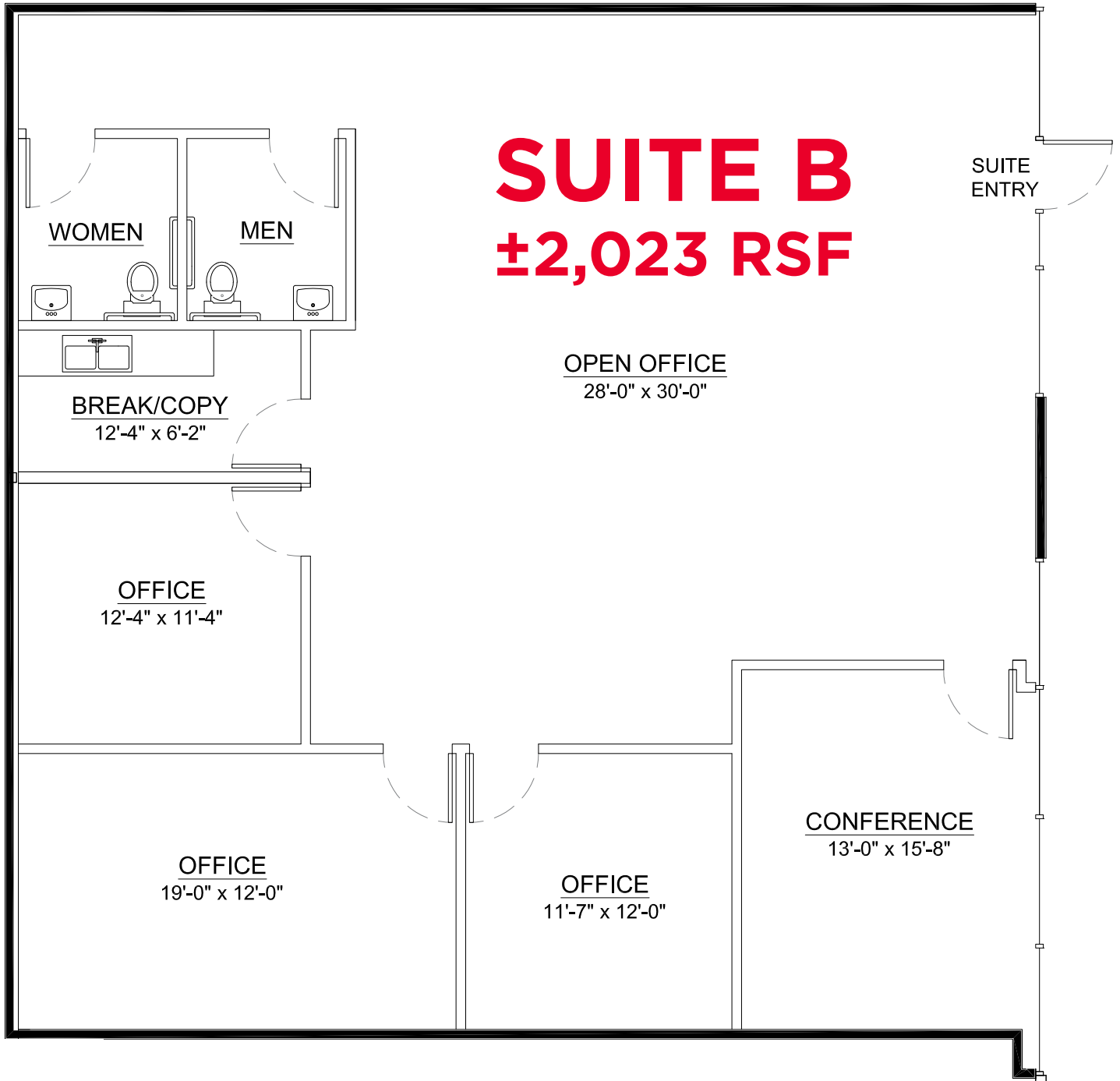
- ±2,023 SF suite available for lease
- Ideal location at the intersection of Truxel Road and Del Paso Road
- Close proximity to retail amenities / restaurants
- Directly across the street from Raley's Center
- Desirable new construction and attractive landscaping
- Immediate access to Interstate 80 and Interstate 5
- Anchor tenants include: Safe Credit Union, Sutter Medical Foundation, Guild Mortgage Company, Lyon Real Estate, and Placer Title Company



Chad Cook, MCR, SIOR, CCIM
 Senior Director
 +1 916 329 1562
 chad.cook@cushwake.com
 Lic #01711687

Zach Mosle, CCIM
 Senior Associate
 +1 916 329 1543
 zach.mosle@cushwake.com
 Lic #01924595

Cushman & Wakefield
 400 Capitol Mall, Suite 1800
 Sacramento, CA 95814
 +1 916 288 4800
 cushmanwakefield.com



Chad Cook, MCR, SIOR, CCIM
Senior Director
+1 916 329 1562
chad.cook@cushwake.com
Lic #01711687

Zach Mosle, CCIM
Senior Associate
+1 916 329 1543
zach.mosle@cushwake.com
Lic #01924595

Cushman & Wakefield
400 Capitol Mall, Suite 1800
Sacramento, CA 95814
+1 916 288 4800
cushmanwakefield.com

Retail Trade Area Aerial



AMENITIES MAP

• HEALTH & WELLNESS •

- 1) Fitness Evolution
- 2) Anytime Fitness
- 3) CA Family Fitness
- 4) Curves
- 5) Bikram Yoga Natomas
- 6) Orangetheory Fitness

• PARKS •

- 1) North Natomas Regional Park
- 2) Kokomo Park
- 3) Quail Park
- 4) Linden Park
- 5) Sundance Park
- 6) Witter Ranch Park
- 7) Tanzanite Park

• FOOD •

- 1) Peet's Coffee & tea
- 2) Jack's Urban Eats
- 3) Jamba Juice
- 4) Freebirds World Burrito
- 5) Corner Bakery Cafe
- 6) Curry Corner
- 7) Bella Bru Cafe
- 8) Tuk Tuk Thai Cuisine
- 9) Panera Bread
- 10) Pete's Restaurant and Brewhouse
- 11) Tapioca Express
- 12) Beach Hut Deli
- 13) Buffalo Wild Wings

POINTS OF INTEREST

DOWNTOWN SACRAMENTO • GOLDEN 1 CENTER •
 RAILYARDS • RALEY FIELD • SLEEP TRAIN ARENA •
 SAC INTERNATIONAL AIRPORT • SPINE BIKE TRAIL

• HOTELS •

- 1) Homewood Suites by Hilton
- 2) Hampton Inn & Suites
- 3) Holiday Inn Express & Suites
- 4) Extended Stay America

• BANKS •

- 1) Wells Fargo
- 2) Tri Counties Bank
- 3) Bank of America
- 4) Safe Credit Union
- 5) Chase

• GAS STATIONS •

- 1) Shell
- 2) Chevron
- 3) Safeway

• SCHOOLS •

- 1) Inderkum High School
- 2) American River College Natomas Center
- 3) Natomas School of Music

• OTHER •

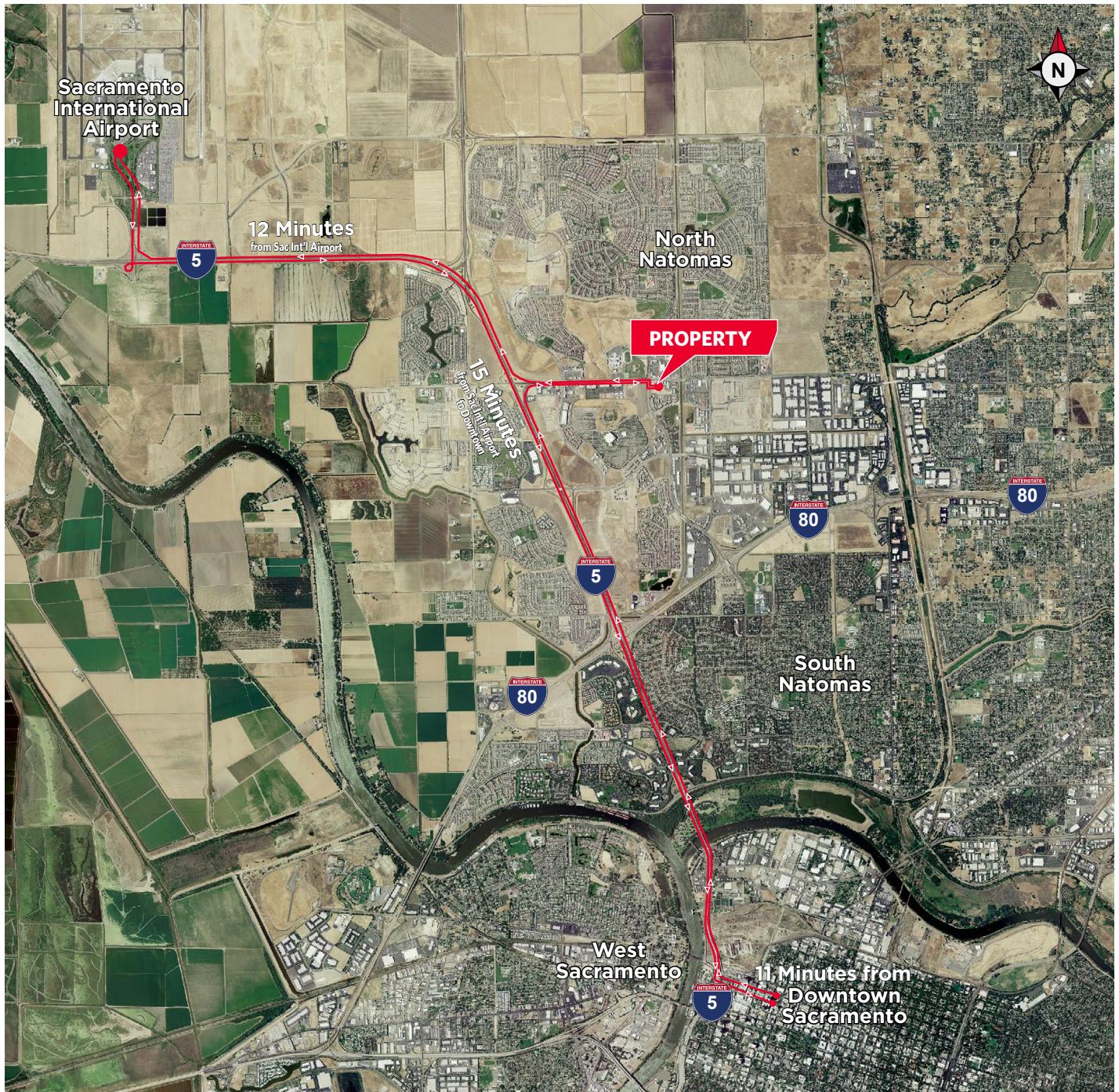
- 1) Raleys
- 2) Safeway
- 3) Natomas Veterinary Hospital
- 4) Cost Plus World Market
- 5) BevMo
- 6) Best Buy
- 7) Target
- 8) FedEx

Chad Cook, MCR, SIOR, CCIM
 Senior Director
 +1 916 329 1562
 chad.cook@cushwake.com
 Lic #01711687

Zach Mosle, CCIM
 Senior Associate
 +1 916 329 1543
 zach.mosle@cushwake.com
 Lic #01924595

Cushman & Wakefield
 400 Capitol Mall, Suite 1800
 Sacramento, CA 95814
 +1 916 288 4800
 cushmanwakefield.com

Aerial: Centerpointe At Natomas Crossing



AERIAL

©2019 Cushman & Wakefield. All rights reserved. The information contained in this communication is strictly confidential. This information has been obtained from sources believed to be reliable but has not been verified. No warranty or representation, express or implied, is made as to the condition of the property (or properties) referenced herein or as to the accuracy or completeness of the information contained herein, and same is submitted subject to errors, omissions, change of price, rental or other conditions, withdrawal without notice, and to any special listing conditions imposed by the property owner(s). Any projections, opinions or estimates are subject to uncertainty and do not signify current or future property performance.

Chad Cook, MCR, SIOR, CCIM
Senior Director
+1 916 329 1562
chad.cook@cushwake.com
Lic #01711687

Zach Mosle, CCIM
Senior Associate
+1 916 329 1543
zach.mosle@cushwake.com
Lic #01924595

Cushman & Wakefield
400 Capitol Mall, Suite 1800
Sacramento, CA 95814
+1 916 288 4800
cushmanwakefield.com