

ELLIOT COMMERCE PARK

INDUSTRIAL OFFICE/WAREHOUSE FOR SALE

\$1,232,224 (\$112/SF)

± 11,002 SF



264 S HAMILTON PLACE • GILBERT, AZ



EXCLUSIVE ADVISOR

ERIK MARSH | Managing Director
602.952.3827 | emarsh@ngkf.com



2398 EAST CAMELBACK ROAD | SUITE 950 | PHOENIX, AZ 85016

ELLIOT ROAD - 20,379 VPD

N ARIZONA AVE

N NEVADA STREET

CORPORATE PLACE

S HAMILTON PLACE

264



ELLIOT COMMERCE PARK

264 S HAMILTON PLACE | ±11,002 SF VACANT

Located Just South of Elliot Rd, Between Arizona Ave & McQueen Rd with Great Freeway Access to US-60 and SR-87 (Beeline Hwy)

TOTAL BUILDING SF | ±11,002

TOTAL OFFICE SF | ±1,700 SF

TOTAL WAREHOUSE SF | ±9,302

CLEAR HEIGHT | 16'

POWER | 120/208 V, 600 AMPS, 3 Phase

LOT SIZE | 0.7 Acres

ZONING | LI, Town of Gilbert

YEAR BUILT | 2007

LOADING | 2 Grade Level Doors (12 x 14)

FENCED YARD

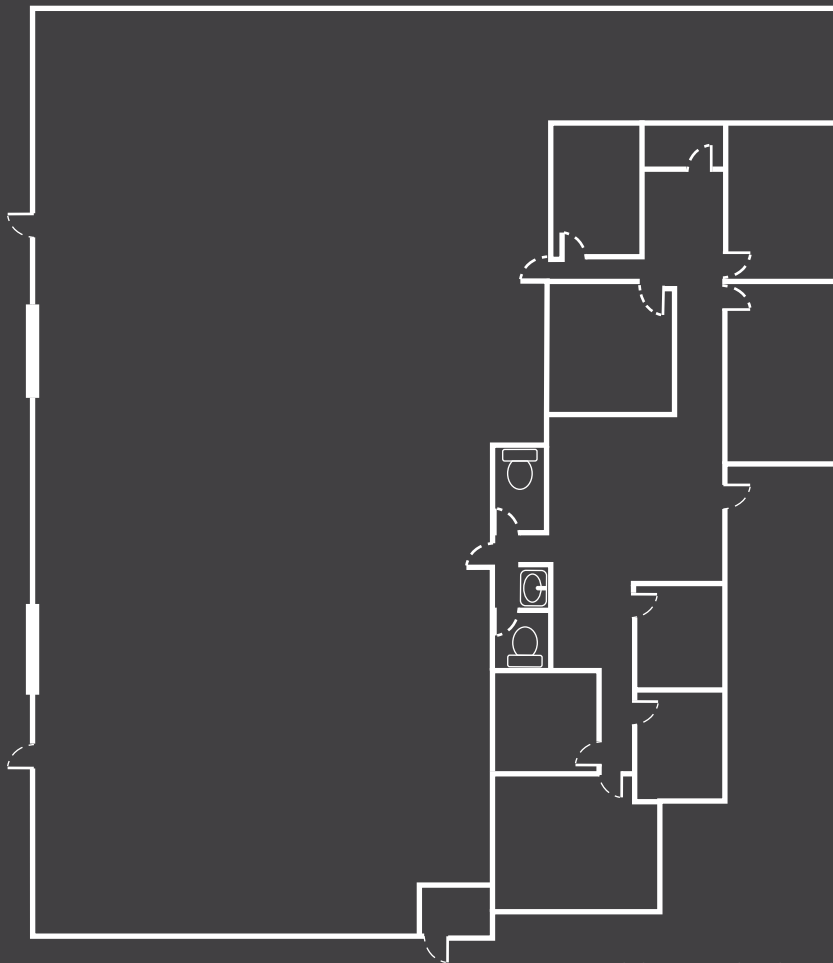
FIRE SPRINKLERS

EVAP COOLED WAREHOUSE





264 S HAMILTON PLACE • GILBERT, AZ



FLOOR PLANS NOT TO SCALE.

PROPERTY INCLUDES

RECEPTION | 8 OFFICES | CONFERENCE ROOM | 2 RESTROOMS
BREAKROOM | 2 GRADE LEVEL DOORS | FENCED YARD

EXCLUSIVE ADVISOR

ERIK MARSH | Managing Director
602.952.3827 | emarsh@ngkf.com



2398 EAST CAMELBACK ROAD | SUITE 950 | PHOENIX, AZ 85016

The information contained herein has been obtained from sources deemed reliable but has not been verified and no guarantee, warranty or representation, either express or implied, is made with respect to such information. Terms of sale or lease and availability are subject to change or withdrawal without notice.