

# PARKRIDGE FOUR

10375 Park Meadows Drive, Lone Tree, CO 80124

UP TO 17,753 SF AVAILABLE



## PROPERTY HIGHLIGHTS

- SUITES FROM 1,619 - 17,753 SF
- ON-SITE DELI, TRAINING/CONFERENCE CENTER, FITNESS CENTER
- INCREDIBLE MOUNTAIN VIEWS
- LEED GOLD
- EASY ACCESS TO I-25 AND C-470
- WALK TO LINCOLN LIGHT RAIL STATION
- EXECUTIVE COVERED PARKING
- 4.4:1,000 PARKING
- FITWEL RATED



**For leasing information please contact:**

Matt Smith | 303.996.8460

[msmith@premisescommercial.com](mailto:msmith@premisescommercial.com)

Alex Nemz | 720.706.0770

[anemz@premisescommercial.com](mailto:anemz@premisescommercial.com)

**PREMISES**  
PREMISES COMMERCIAL REAL ESTATE LLC  
[WWW.PREMISESCOMMERCIAL.COM](http://WWW.PREMISESCOMMERCIAL.COM)

# PARKRIDGE FOUR

10375 Park Meadows Drive, Lone Tree, CO 80124

## AVAILABLE SUITES

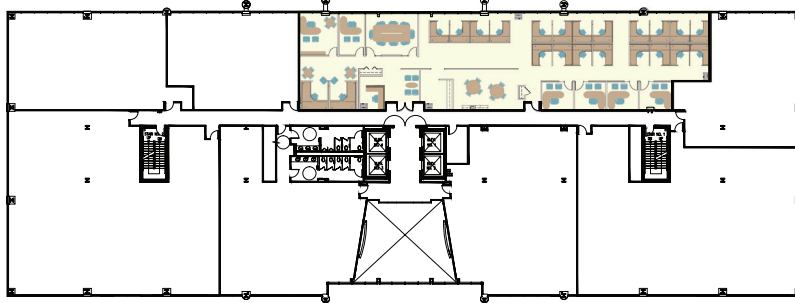
Suite 155  
2,967 sf



First Floor

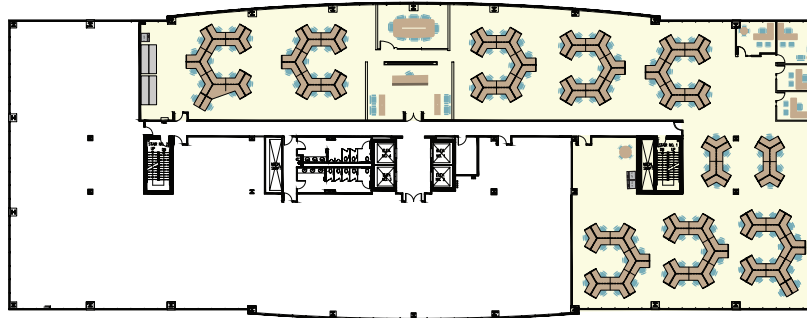
Suite 120  
3,386 sf

Suite 250  
6,111 sf



Second Floor

Suite 350  
17,753 sf



Third Floor

Suite 450  
2,423 sf

Suite 490  
2,383 sf



Fourth Floor

[WWW.PREMISESCOMMERCIAL.COM](http://WWW.PREMISESCOMMERCIAL.COM)

The information contained herein, while not guaranteed, has been secured from sources we believe to be reliable. Different brokerage relationships are available which include Seller/Landlord Agency, Buyer/Tenant Agency and Transaction Broker. Premises Commercial Real Estate, LLC is acting in this capacity as Landlord's/Sublessor's Agent, unless otherwise agreed, and owes its fiduciary allegiance to Landlord/Sublessor as defined by Colorado Real Estate Commission.