

1495 SEABRIGHT AVENUE

LONG BEACH, CA 90813



24,850 SF AVAILABLE
FOR LEASE

FOR MORE INFORMATION, PLEASE CONTACT:

YOUR LOCAL MARKET EXPERTS

 **LEE &
ASSOCIATES®**
COMMERCIAL REAL ESTATE SERVICES
LOS ANGELES • LONG BEACH

Garrett Massaro
Principal
BRE# 01771471
PH: 562.354.2516
E: gmassaro@leelalb.com

Brandon Carrillo
Principal
BRE# 01745362
PH: 562.354.2510
E: bcarrillo@leelalb.com

PROPERTY FEATURES

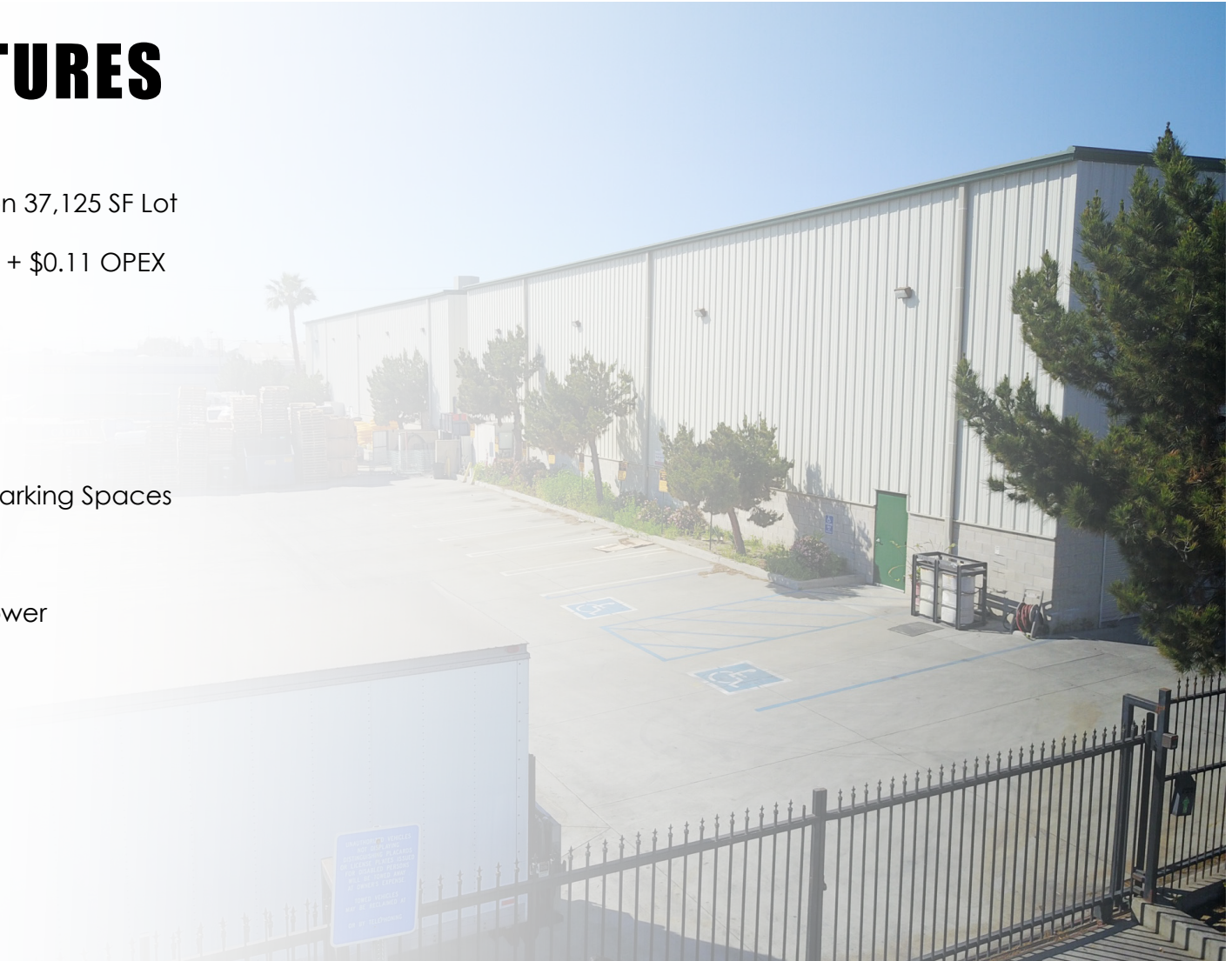
AVAILABLE SF: 24,850 SF Bldg on 37,125 SF Lot

RATE: \$0.69 PSFN NNN + \$0.11 OPEX

ZONING: LBIG

APN: 7429-034-015

- 3,384 SF of Office
- Freestanding Building w/ 30 Parking Spaces
- Three (3) GL Doors (16'x16')
- 800 Amp / 480 V / 3 Phase Power
- Sprinklers: 0.385/3,000
- Available 7/1/2017



Copyright © Lee & Associates. All rights reserved. No part of this work may be reproduced or distributed without written permission of the copyright owner. The information contained in this report was gathered by Lee & Associates from sources believed to be reliable. Lee & Associates, however, makes no representation concerning the accuracy or completeness of such information and expressly disclaims any responsibility for any inaccuracy contained herein. 3.13.17

FOR MORE INFORMATION, PLEASE CONTACT:

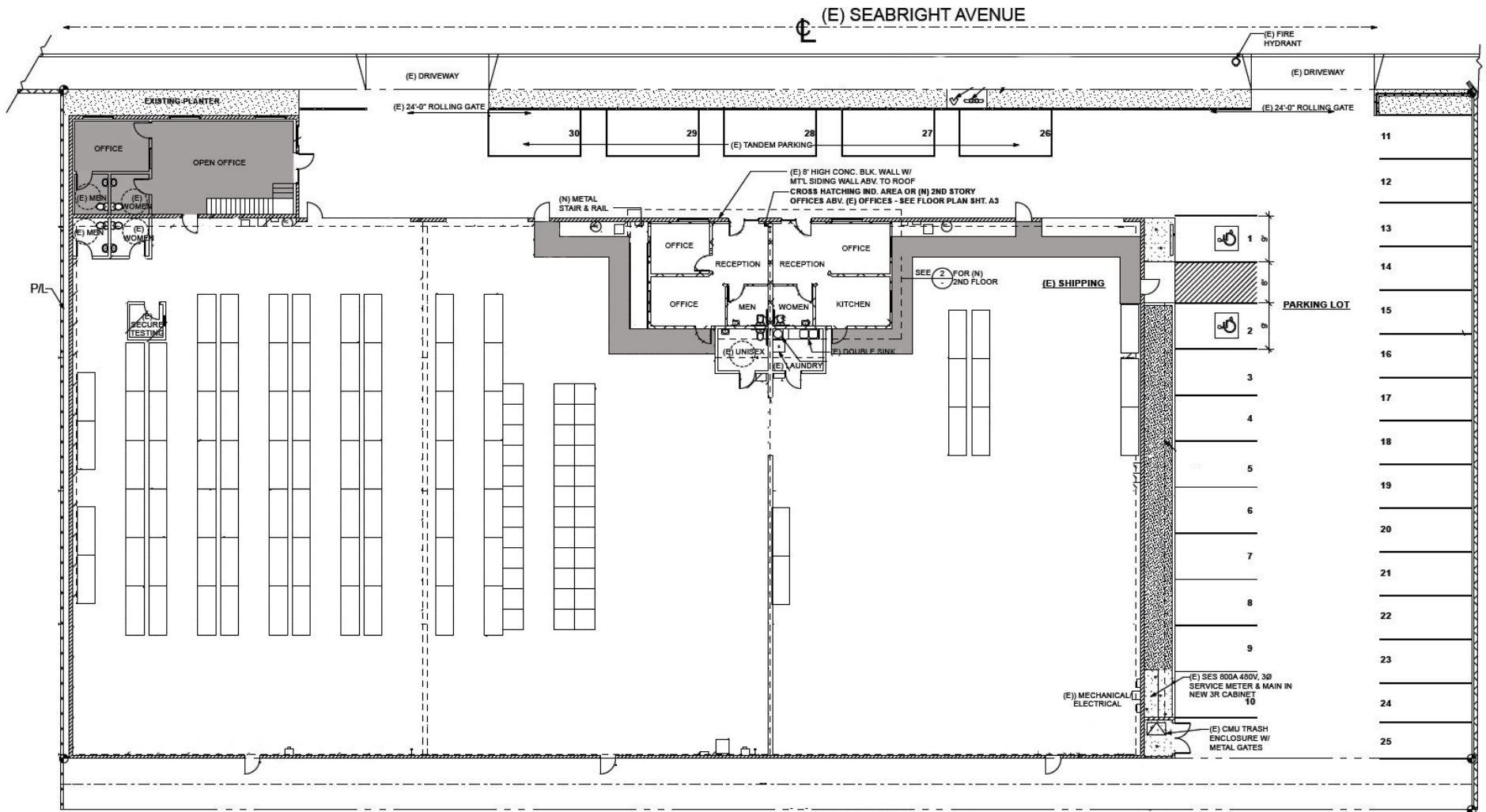
YOUR LOCAL MARKET EXPERTS

 **LEE &
ASSOCIATES®**
COMMERCIAL REAL ESTATE SERVICES
LOS ANGELES - LONG BEACH

Garrett Massaro
Principal
BRE# 01771471
PH: 562.354.2516
E: gmassaro@leelalb.com

Brandon Carrillo
Principal
BRE# 01745362
PH: 562.354.2510
E: bcarrillo@leelalb.com

FLOOR PLAN - FIRST FLOOR (NOT DRAWN TO SCALE)



Copyright © Lee & Associates. All rights reserved. No part of this work may be reproduced or distributed without written permission of the copyright owner. The information contained in this report was gathered by Lee & Associates from sources believed to be reliable. Lee & Associates, however, makes no representation concerning the accuracy or completeness of such information and expressly disclaims any responsibility for any inaccuracy contained herein. 3.13.17

FOR MORE INFORMATION, PLEASE CONTACT:

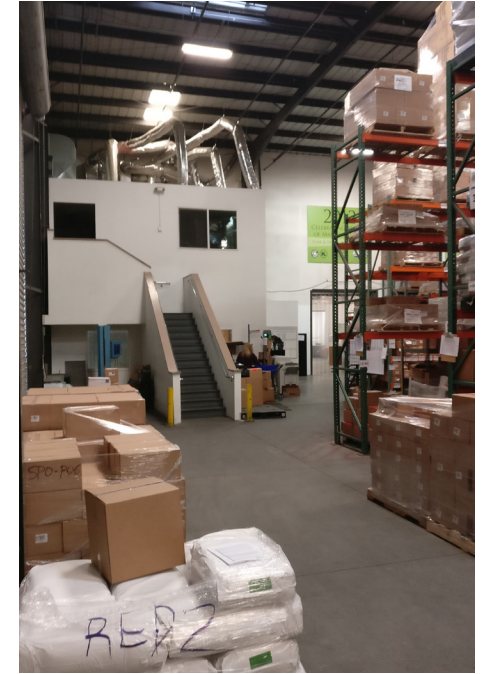
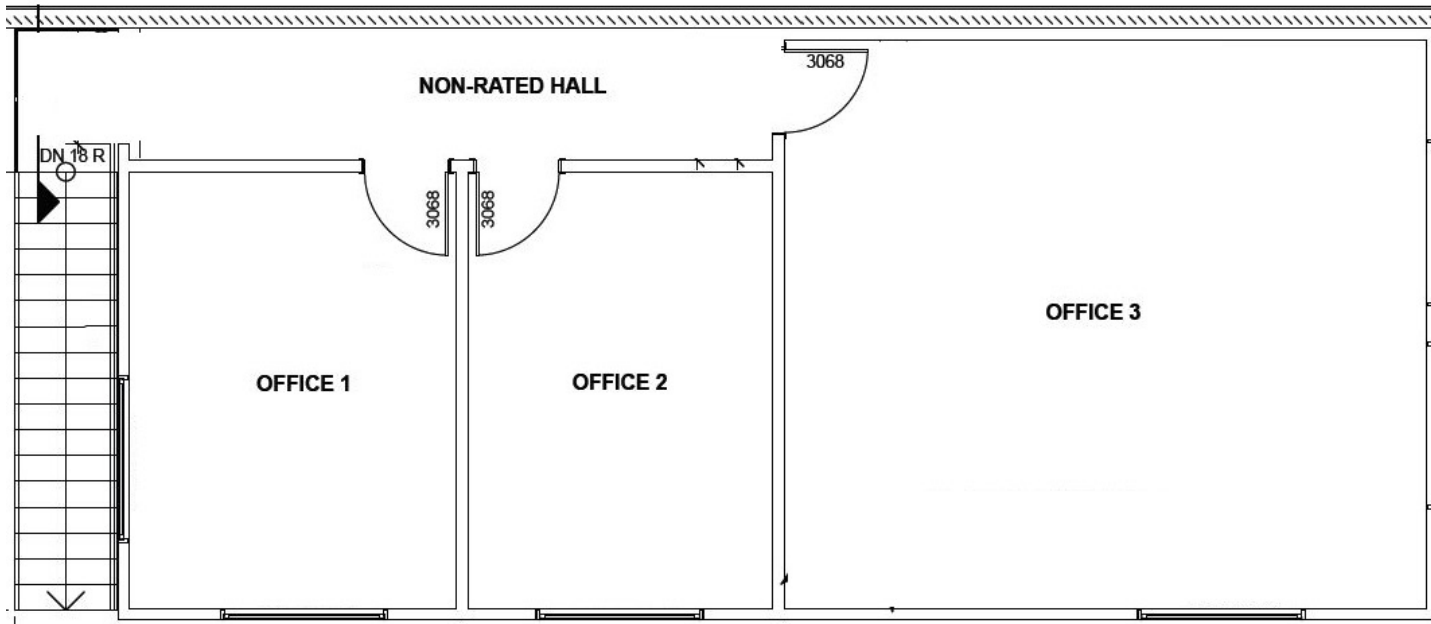
YOUR LOCAL MARKET EXPERTS



Garrett Massaro
Principal
BRE# 01771471
PH: 562.354.2516
E: gmassaro@leelalb.com

Brandon Carrillo
Principal
BRE# 01745362
PH: 562.354.2510
E: bcarrillo@leelalb.com

FLOOR PLAN - SECOND FLOOR - SOUTHERN OFFICE POD (NOT DRAWN TO SCALE)



Copyright © Lee & Associates. All rights reserved. No part of this work may be reproduced or distributed without written permission of the copyright owner. The information contained in this report was gathered by Lee & Associates from sources believed to be reliable. Lee & Associates, however, makes no representation concerning the accuracy or completeness of such information and expressly disclaims any responsibility for any inaccuracy contained herein. 3.13.17

FOR MORE INFORMATION, PLEASE CONTACT:

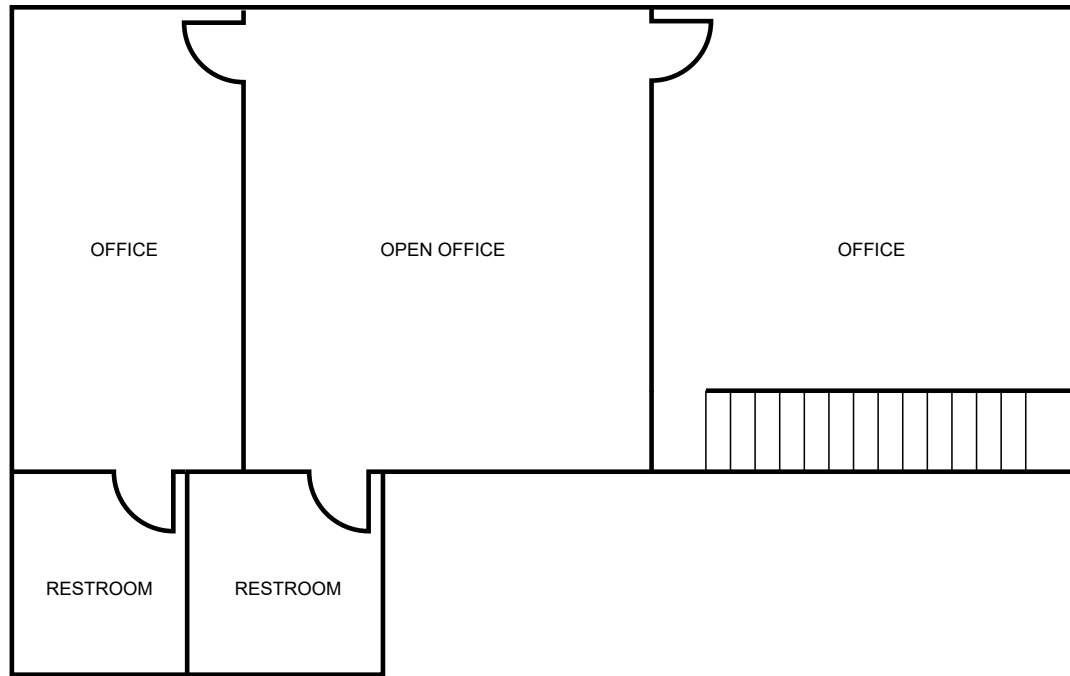
YOUR LOCAL MARKET EXPERTS

LEE & ASSOCIATES®
COMMERCIAL REAL ESTATE SERVICES
LOS ANGELES • LONG BEACH

Garrett Massaro
Principal
BRE# 01771471
PH: 562.354.2516
E: gmassaro@leelalb.com

Brandon Carrillo
Principal
BRE# 01745362
PH: 562.354.2510
E: bcarrillo@leelalb.com

FLOOR PLAN - SECOND FLOOR - NORTHERN OFFICE POD (NOT DRAWN TO SCALE)



Copyright © Lee & Associates. All rights reserved. No part of this work may be reproduced or distributed without written permission of the copyright owner. The information contained in this report was gathered by Lee & Associates from sources believed to be reliable. Lee & Associates, however, makes no representation concerning the accuracy or completeness of such information and expressly disclaims any responsibility for any inaccuracy contained herein. 3.13.17

FOR MORE INFORMATION, PLEASE CONTACT:

YOUR LOCAL MARKET EXPERTS



Garrett Massaro
Principal
BRE# 01771471
PH: 562.354.2516
E: gmassaro@leelalb.com

Brandon Carrillo
Principal
BRE# 01745362
PH: 562.354.2510
E: bcarrillo@leelalb.com



Copyright © Lee & Associates. All rights reserved. No part of this work may be reproduced or distributed without written permission of the copyright owner. The information contained in this report was gathered by Lee & Associates from sources believed to be reliable. Lee & Associates, however, makes no representation concerning the accuracy or completeness of such information and expressly disclaims any responsibility for any inaccuracy contained herein. 3.13.17

FOR MORE INFORMATION, PLEASE CONTACT:

YOUR LOCAL MARKET EXPERTS

 **LEE &
ASSOCIATES®**
COMMERCIAL REAL ESTATE SERVICES
LOS ANGELES • LONG BEACH

Garrett Massaro
Principal
BRE# 01771471
PH: 562.354.2516
E: gmassaro@leelalb.com

Brandon Carrillo
Principal
BRE# 01745362
PH: 562.354.2510
E: bcarrillo@leelalb.com



Copyright © Lee & Associates. All rights reserved. No part of this work may be reproduced or distributed without written permission of the copyright owner. The information contained in this report was gathered by Lee & Associates from sources believed to be reliable. Lee & Associates, however, makes no representation concerning the accuracy or completeness of such information and expressly disclaims any responsibility for any inaccuracy contained herein. 3.13.17

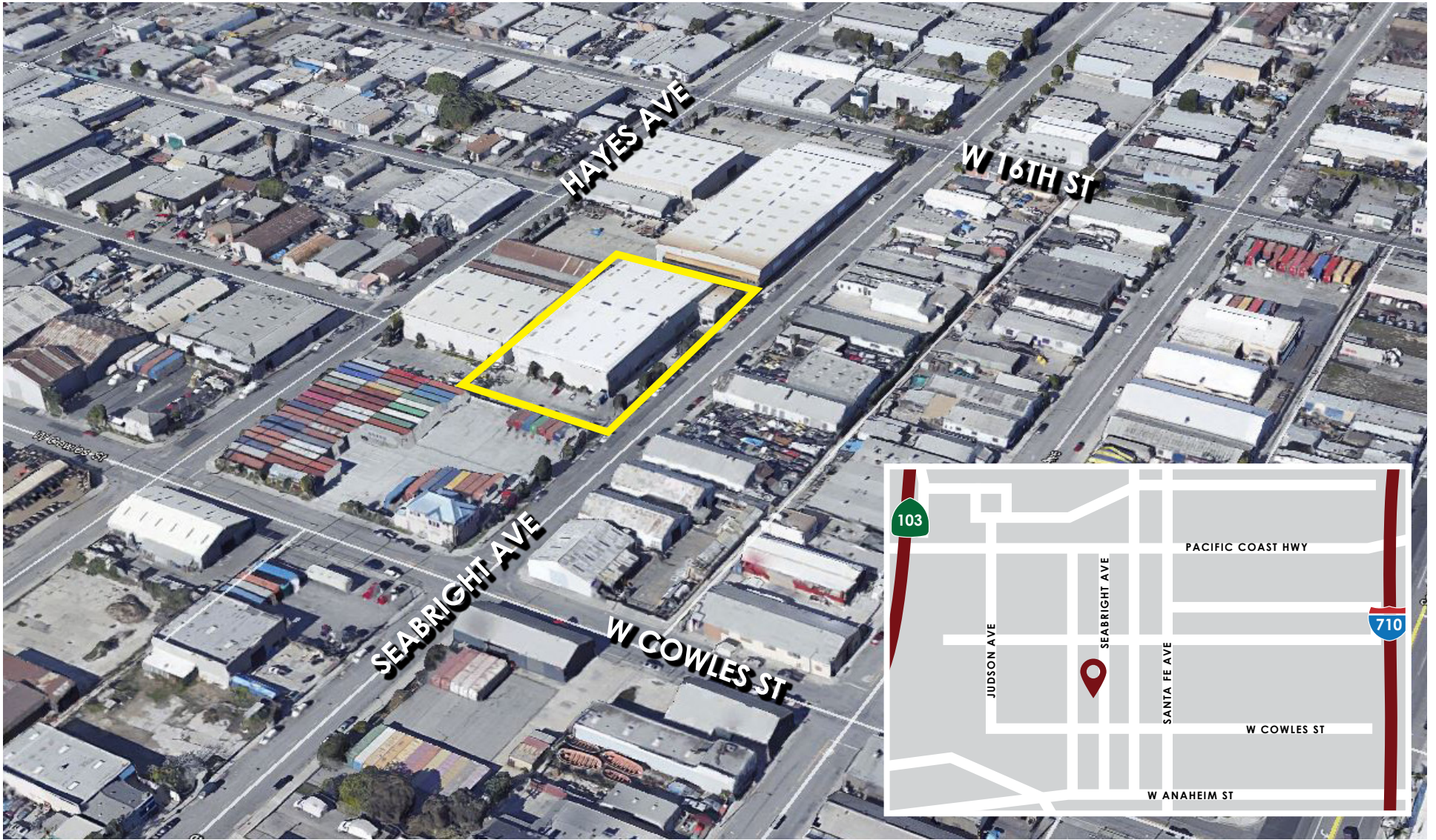
FOR MORE INFORMATION, PLEASE CONTACT:

YOUR LOCAL MARKET EXPERTS

 **LEE &
ASSOCIATES®**
COMMERCIAL REAL ESTATE SERVICES
LOS ANGELES • LONG BEACH

Garrett Massaro
Principal
BRE# 01771471
PH: 562.354.2516
E: gmassaro@leelalb.com

Brandon Carrillo
Principal
BRE# 01745362
PH: 562.354.2510
E: bcarrillo@leelalb.com



Copyright © Lee & Associates. All rights reserved. No part of this work may be reproduced or distributed without written permission of the copyright owner. The information contained in this report was gathered by Lee & Associates from sources believed to be reliable. Lee & Associates, however, makes no representation concerning the accuracy or completeness of such information and expressly disclaims any responsibility for any inaccuracy contained herein. 3.13.17

FOR MORE INFORMATION, PLEASE CONTACT:

YOUR LOCAL MARKET EXPERTS



Garrett Massaro
Principal
BRE# 01771471
PH: 562.354.2516
E: gmassaro@leelalb.com

Brandon Carrillo
Principal
BRE# 01745362
PH: 562.354.2510
E: bcarrillo@leelalb.com