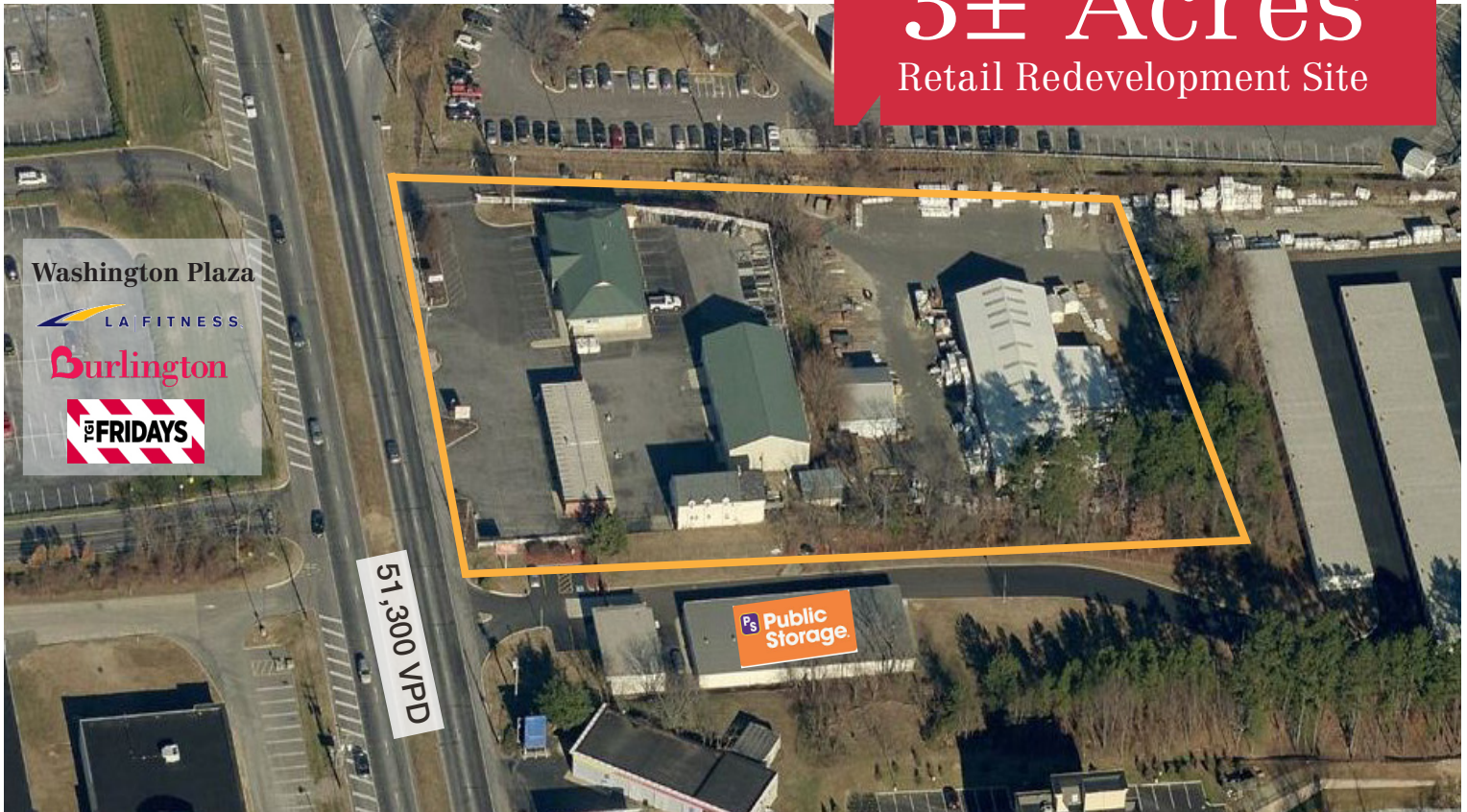


Available for Sale

3± Acres
Retail Redevelopment Site



5950 Route 42

Turnersville, New Jersey

Property Highlights

The property is located along Route 42 in Turnersville's retail district, next to Public Storage. It is across the street from a plaza featuring an LA Fitness, PetSmart, Kohl's, Burlington Coat Factory, Five Below, Friday's and more. The Gloucester Premium Outlets selling the 'most sought-after designer and lifestyle brands' is located one mile north on Route 42. The site is 0.2 miles from Atlantic City Expressway Exit #7.

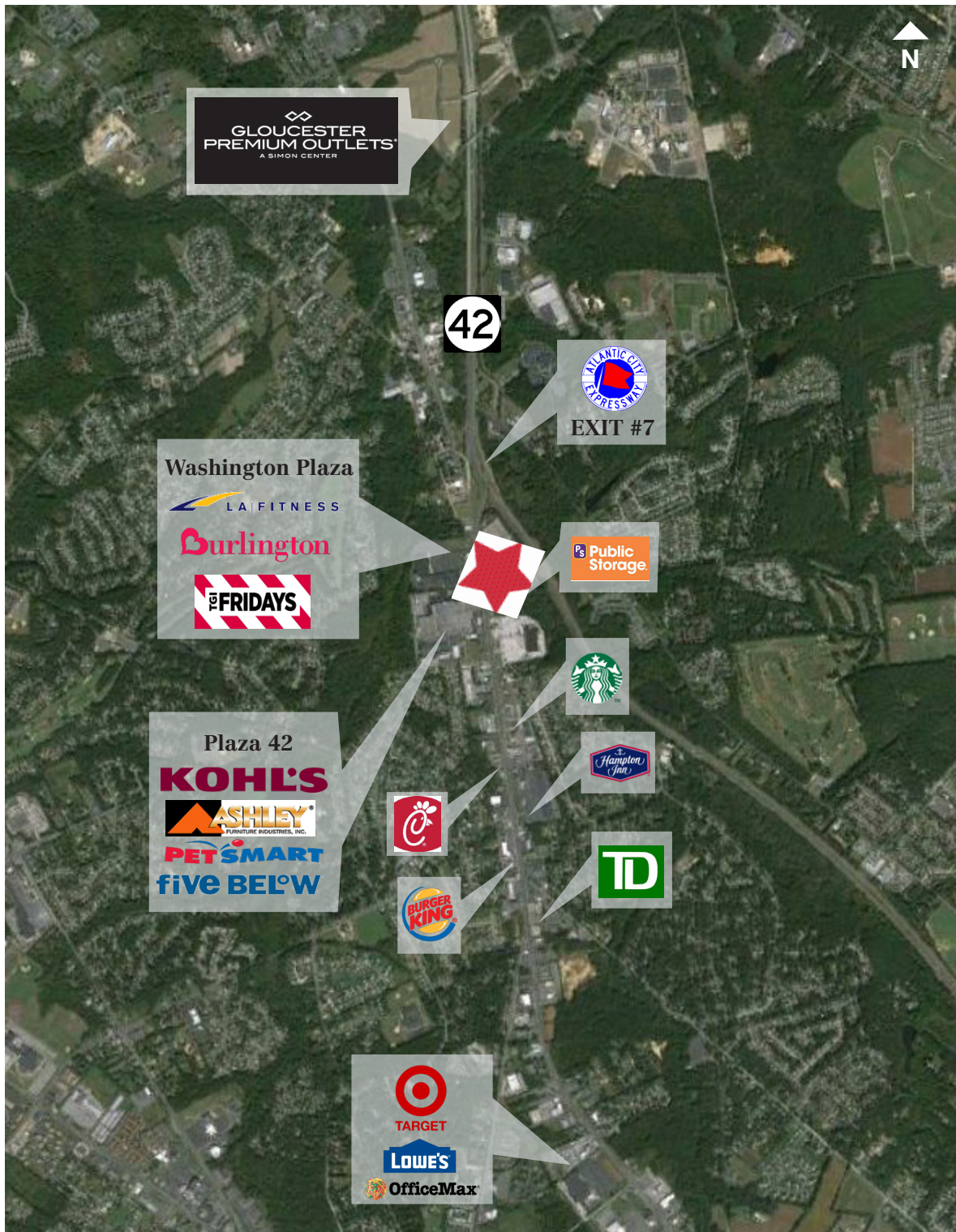
- Lot Size: 3± AC
- Zoning: CI (commercial industrial)
- Ideal redeveloped opportunity
- Excellent visibility
- Public water
- Over 300 feet on Route 42
- Block: 196, Lots: 5.02, 5.03, 5.04

Demographics	1 mi	3 mi	5 mi
Population	7,717	71,909	174,798
Households	2,723	25,462	64,505
Med. Household Income	\$85,214	\$82,925	\$77,318

For more information:

Jonathan Klear

+1 856 433 1801 • jonathan.klear@naimertz.com



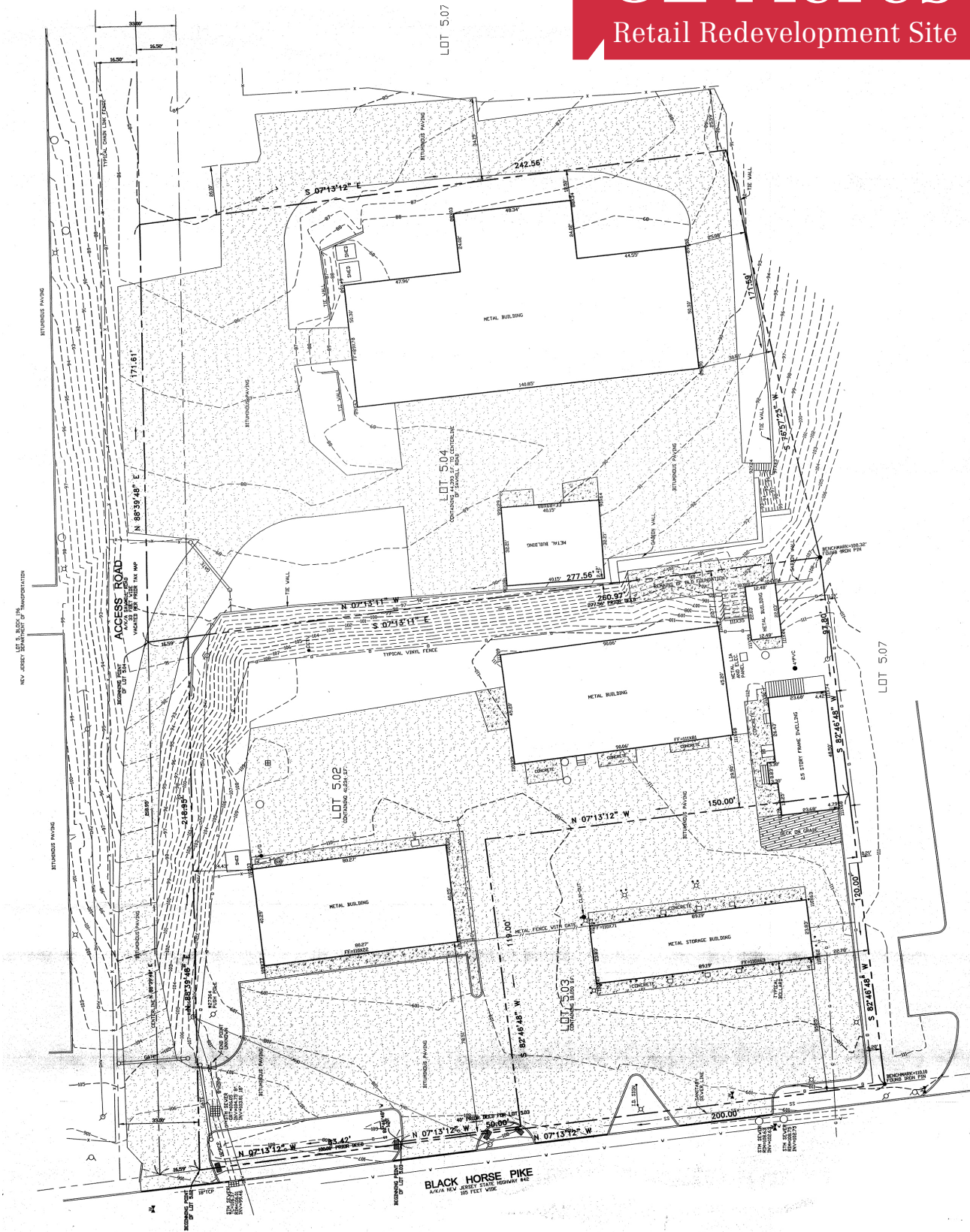
For more information:

Jonathan Klear

+1 856 433 1801 • jonathan.klear@naimertz.com

21 Roland Avenue
Mount Laurel, NJ 08054
+1 856 234 9600

naimertz.com



For more information:

Jonathan Klear

+1 856 433 1801 • jonathan.klear@naimertz.com

21 Roland Avenue
 Mount Laurel, NJ 08054
 +1 856 234 9600

naimertz.com