

LEASE RATE REDUCED



5608 Pinestraw Road

Columbia, South Carolina

For more information: **John Gregory, PE**

+1 803 744 9896

jegregory@naicolumbia.com

Executive Summary

5608 Pinestraw Road - Columbia, South Carolina

Building Information

- Location: 5608 Pinestraw Road - Columbia, South Carolina 29206
- Available SF: ±2,400
 - Office SF: ±500
 - Showroom SF: ±1,900
- Building Construction: Brick
- Roof: Metal (*New in 2016*)
- Lighting: Fluorescent
- Building Dimensions: 61' x 40'
- Overhead roll-up doors: 3
- Heated and cooled: throughout

Site Information

- Water and Sewer: City of Columbia
- Electrical: 200 amp
- Neighborhood: Forest Acres
- Parking: 21 Spaces (*New in 2016*)
- Zoning: Neighborhood Commercial (*Richland County*)
- Site Size: ±0.33 AC

Pricing

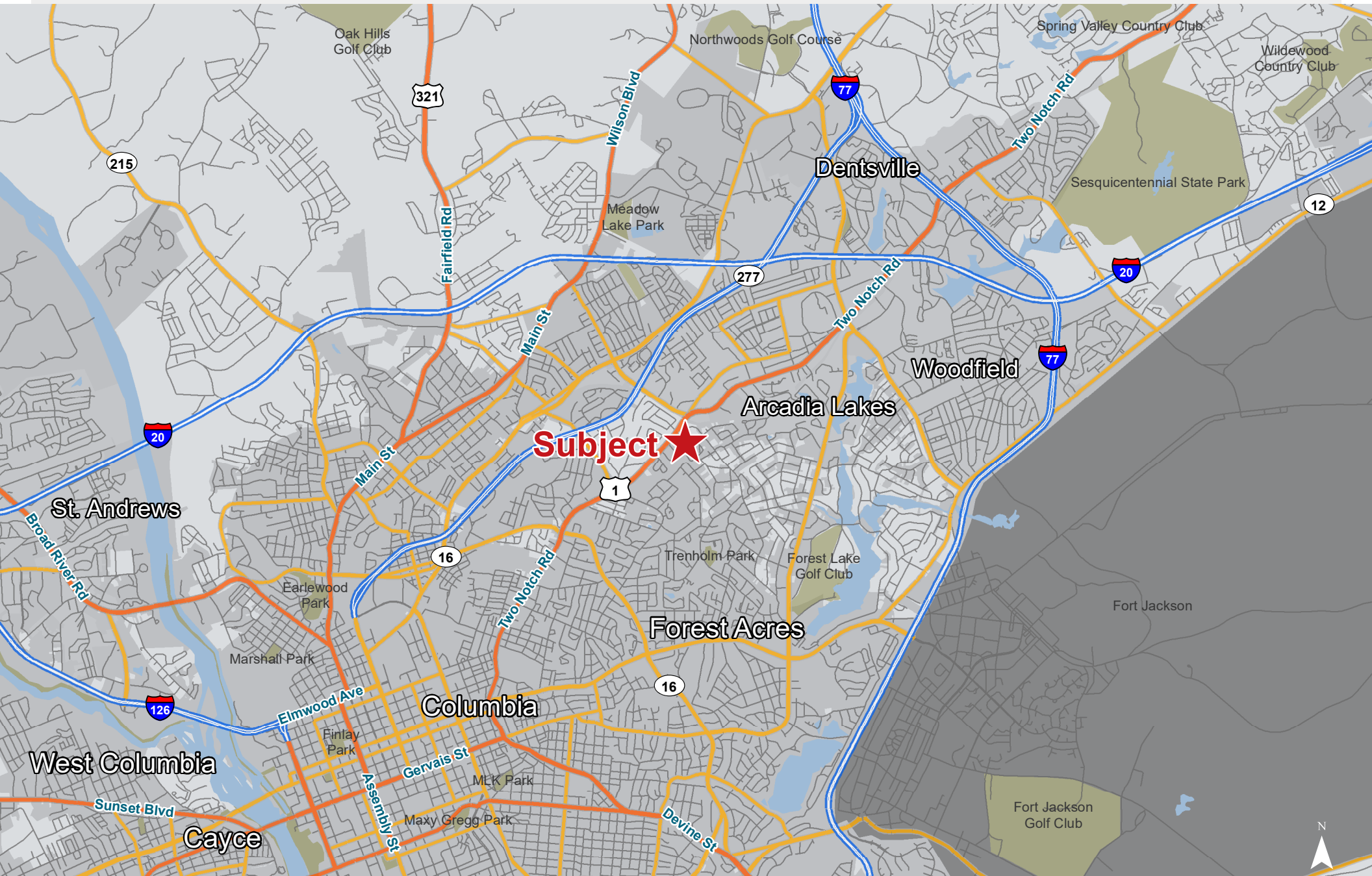
- Lease Rate: ~~\$2,000~~ \$1,700 per month, Net of Utilities

Property Pictures

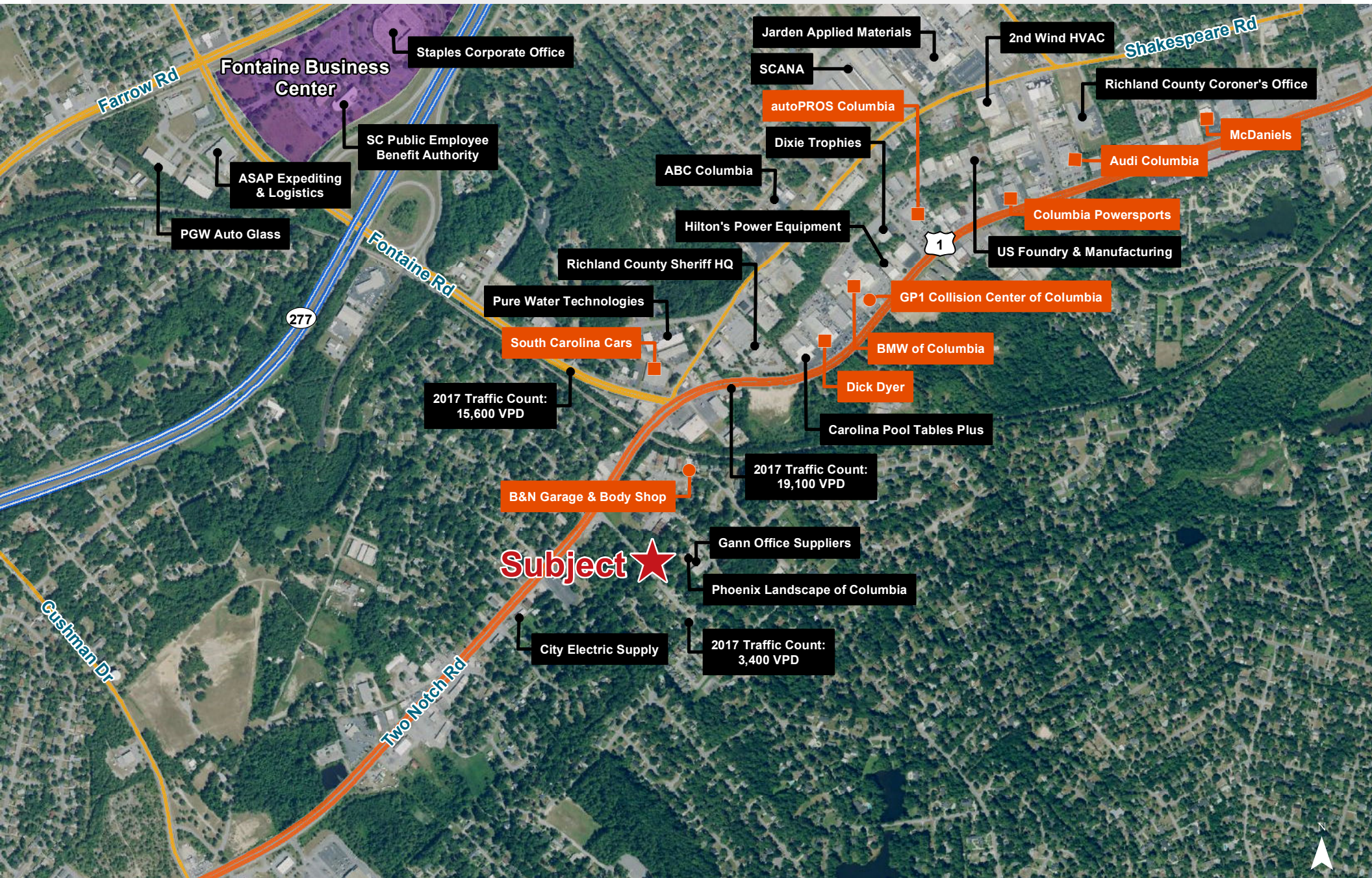
5608 Pinestraw Road - Columbia, South Carolina



Location



Map Updated: Wednesday, December 12, 2018. This information submitted is not guaranteed. Although obtained from reliable sources, all information should be confirmed prior to use or reliance upon the information. This document may not be reproduced in whole or in part without the express written consent of NAI Avant.



Map Updated: Wednesday, December 12, 2018. This information submitted is not guaranteed. Although obtained from reliable sources, all information should be confirmed prior to use or reliance upon the information. This document may not be reproduced in whole or in part without the express written consent of NAI Avant.