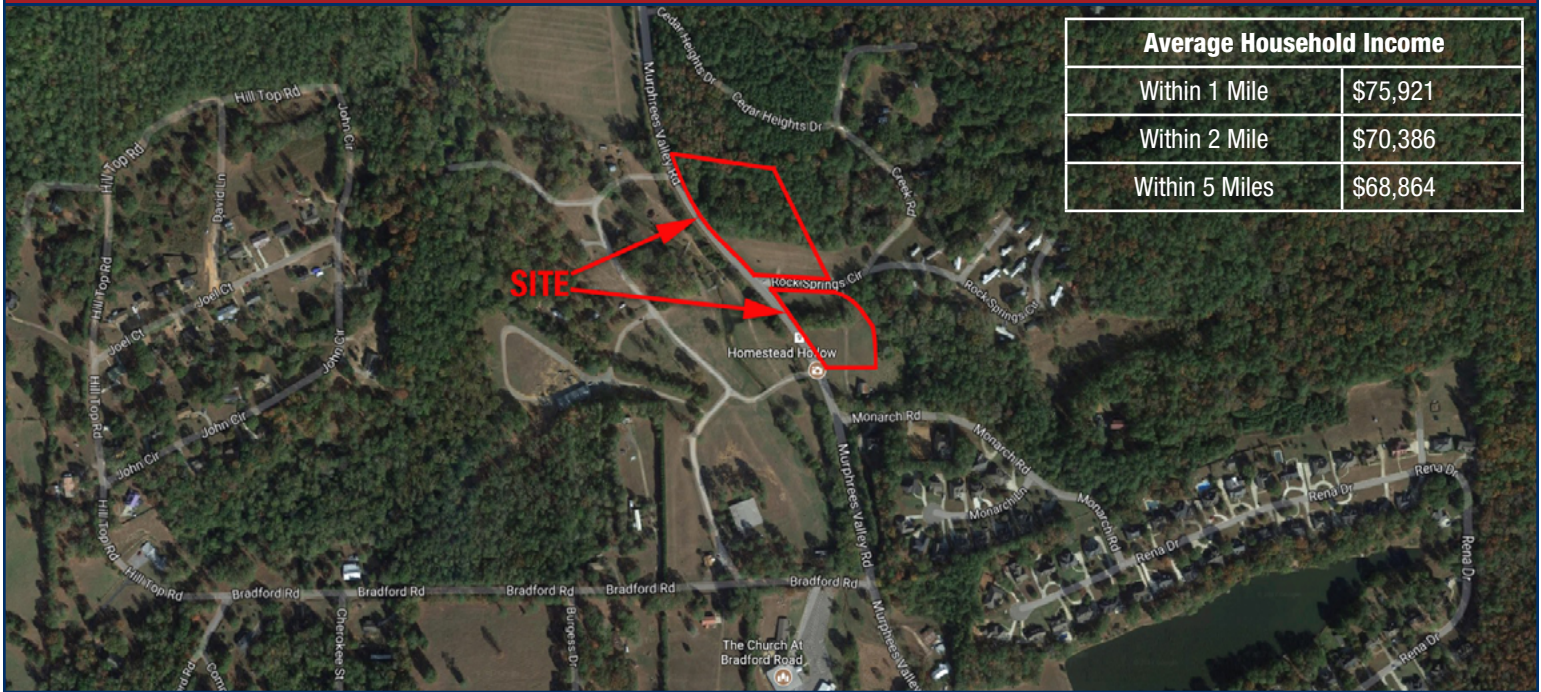


Proposed Commercial

Murphrees Valley Road, Springville, AL 35146



Average Household Income	
Within 1 Mile	\$75,921
Within 2 Mile	\$70,386
Within 5 Miles	\$68,864

Booming area ready for commercial development of all kinds

- 5 +/- AC with over 900 feet of frontage on Murphrees Valley Road
- 250 +/- ft deep
- Excellent visibility on the outside of a slow curve
- Level and mostly on grade
- Water and sewer available
- Approximately 1.7 miles north of I-59 Exit 154
- Across from Homestead Hollow
- In front of Rock Spring Mobile Home Park which has expansion plans in the works



Price: \$100,000

For Sale, Lease, or Build-To-Suit

Information deemed reliable, but subject to verification



Durham Ellis
 205.914.6600
 durhamellis@lahcommercial.com

2850 Cahaba Road, Suite 200
 Birmingham, AL 35223
 Office: 205-870-8580
 Fax: 205-870-7348