

CRANBERRY BOG AND POND-FRONT RESIDENTIAL PROPERTY FOR SALE

37.25 ± ACRES

Triangle Pond | Plymouth MA



FOR SALE AT \$999,000

For more information, please contact:

KEVIN PEPE

Office: 508-862-9000, Ext. 105 | Cell: 508-962-5022

Fax: 508-862-9200 | kpepe@comerealty.net

Commercial
Realty Advisors



222 West Main Street, Hyannis, MA 02601 | 508-862-9000 | www.comerealty.net

37.25 ± ACRES OF CRANBERRY BOG, RESIDENTIAL, POND-FRONT LAND

The Property

Located on Triangle Pond in Plymouth, this offering consists of 37.25 ± total acres of land, including 7.03 acres of functional cranberry bogs. This land is zoned Residential with the opportunity for real estate development. Or hunting/fishing retreat. The land is available in whole or in part.

NR Island Pond Road 1

Shown as parcel 007-000 on the Town of Plymouth (MA) Assessors Map 059. The subject property consists of approximately 9.85 acres and is improved with Early Black vined bogs with some additional upland. This property consists of 9.85 acres of bogs.

NR Island Pond Road 2

Shown as parcel 011-019 on the Town of Plymouth (MA) Assessors Map 059. The subject property consist of approximately 2.61 acres and is seemingly unimproved. This property contains 1.34 ± acres of bogs.

Triangle Pond

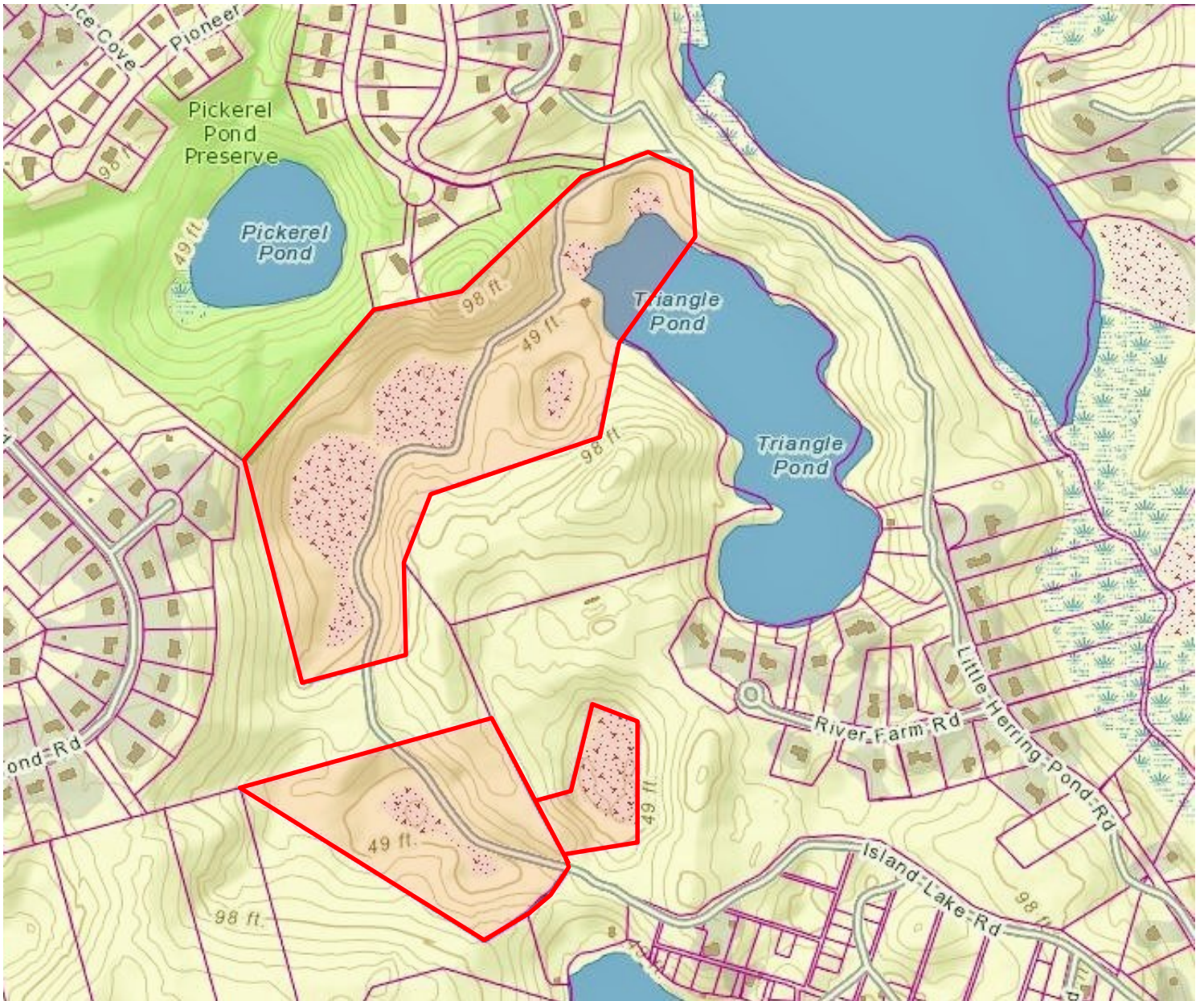
Shown as parcel 008-000U on the Town of Plymouth (MA) Assessors Map 122. This subject property consist of approximately 24.789 acres and is improved with Early Black vined bogs, some significant upland and deeded pump access with uninhabitable cam house and significant frontage on Tringle Pond. This property contains 4.88 acres of bogs.

RE Taxes (2015): \$2,392.14



Commercial
Realty Advisors

37.25 ± ACRES OF CRANBERRY BOG, RESIDENTIAL, POND-FRONT LAND



COMMERCIAL REALTY ADVISORS' DISCLAIMER

This information has been secured from sources we believe to be reliable, but we make no representation or warranties, expressed or implied, as to the accuracy of the information contained herein. Commercial Realty Advisors, Inc. and the agent presenting this opportunity represent the Seller / Lessor, and are neither architects, engineers, inspectors, accountants nor attorneys, and therefore all buyers / tenants must consult with their own architects, engineers, inspectors, accountants or attorneys as to financial, zoning, lot line, handicapped accessibility, flood plain, mechanical, structural, or environmental concerns. Buyer must verify all information and bears all the risk for inaccuracies. Referenced square footage and acreage and sketched outlines are approximate, and this information package is subject to change.