

# Colver

PUBLIC MARKET





# Coming Spring 2019



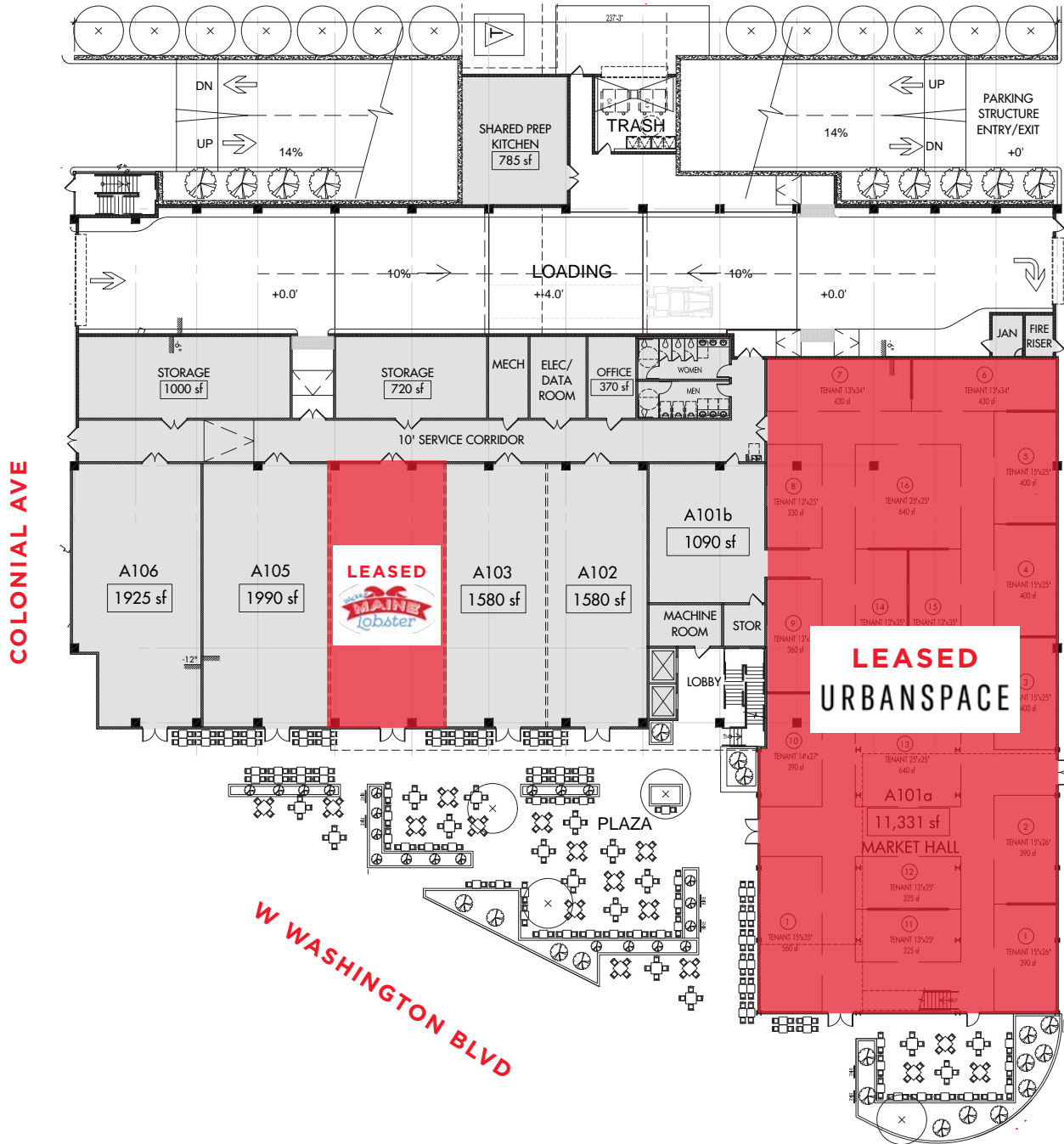


*Build to suit food hall opportunities as well as full service restaurant, fitness and retail spaces.*

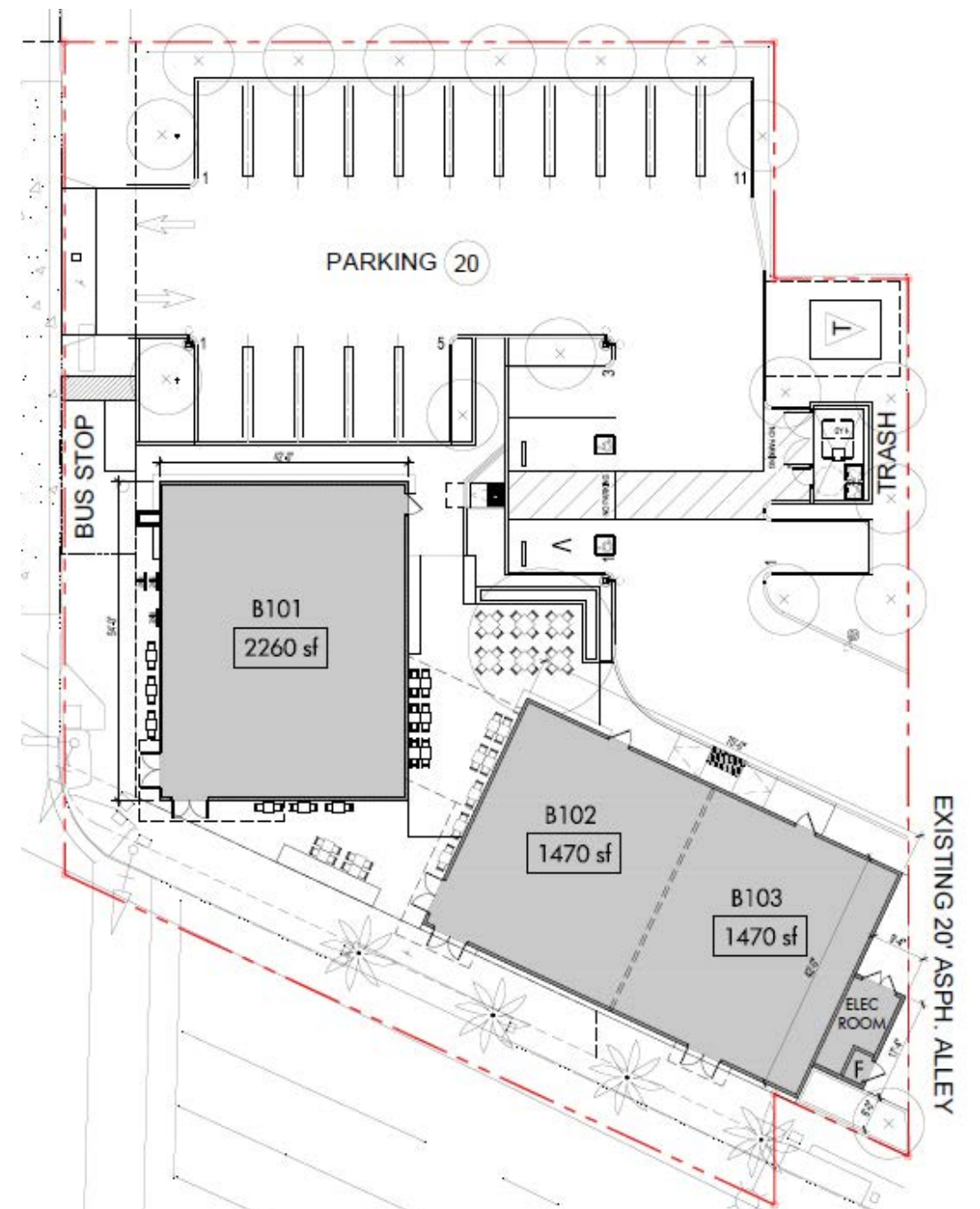




# SITE A



# SITE B





# Parking Count

260 Parking Stalls

SITE A

Centinela | 34,000 VPD

28 Parking Stalls

SITE B

# Vehicles Per Day

Washington | 21,000 VPD





# Drive Times

*Santa Monica*  
15 minutes

*Mar Vista*  
8 minutes

*Downtown Culver City*  
10 minutes

*Hayden Tract*  
12 minutes

*Culver*  
PUBLIC MARKET

*Venice*  
10 minutes

*Marina Del Rey*  
10 minutes

*Playa Vista*  
5 minutes

*Westchester*  
10 minutes





# Westside Office Tenants

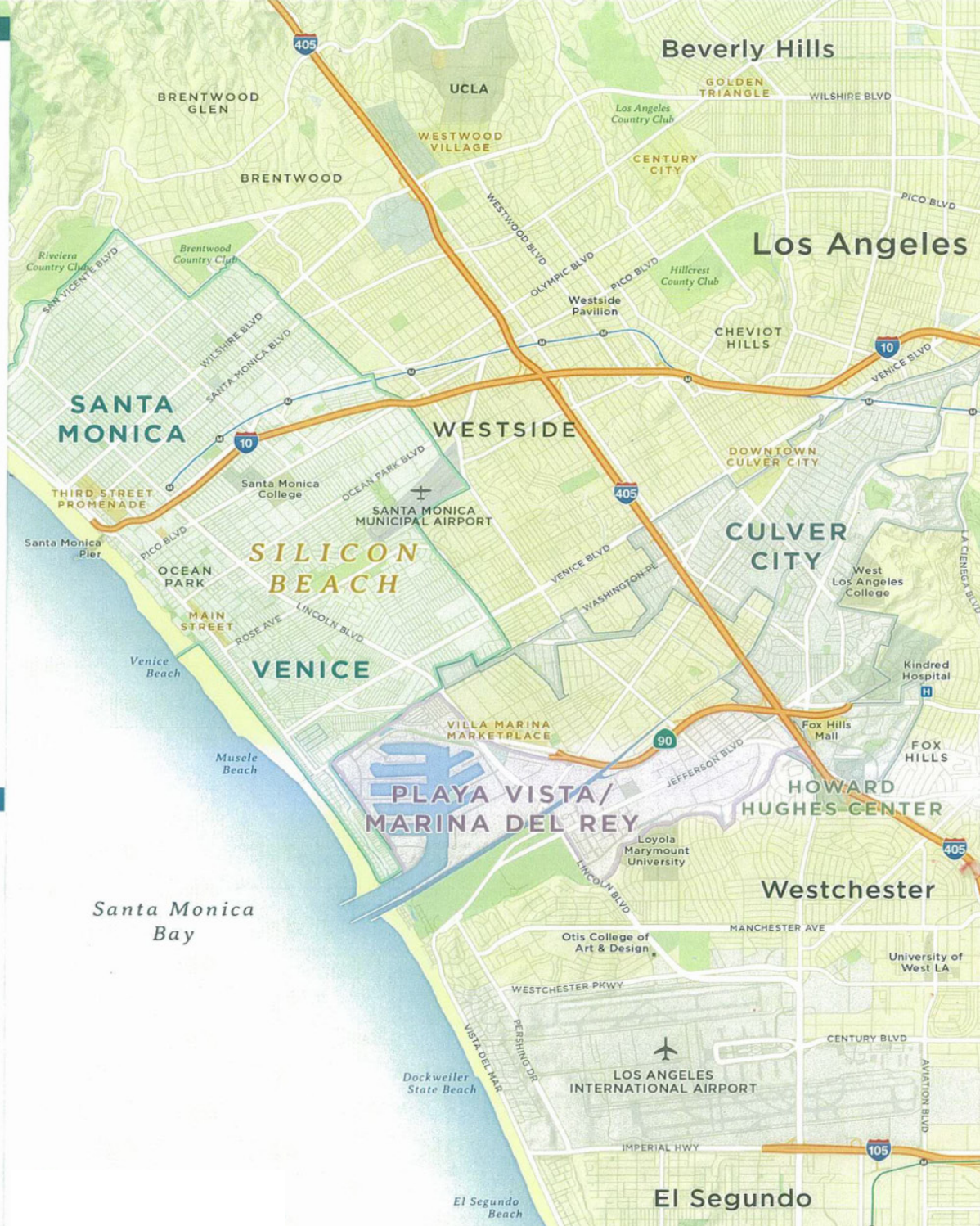
In close proximity to creative office & large daytime populations.

## SANTA MONICA · VENICE

- |  |  |  |
|--|--|--|
|  |  |  |
|  |  |  |
|  |  |  |
|  |  |  |
|  |  |  |
|  |  |  |
|  |  |  |
|  |  |  |
|  |  |  |
|  |  |  |
|  |  |  |
|  |  |  |
|  |  |  |
|  |  |  |

## CULVER CITY

- |  |  |  |
|--|--|--|
|  |  |  |
|  |  |  |
|  |  |  |
|  |  |  |
|  |  |  |
|  |  |  |
|  |  |  |
|  |  |  |



## WESTSIDE EMPLOYMENT CENTERS

### PLAYA VISTA · MARINA DEL REY

- |  |  |  |
|--|--|--|
|  |  |  |
|  |  |  |
|  |  |  |
|  |  |  |
|  |  |  |
|  |  |  |
|  |  |  |
|  |  |  |
|  |  |  |
|  |  |  |
|  |  |  |
|  |  |  |
|  |  |  |
|  |  |  |
|  |  |  |

### HOWARD HUGHES CENTER

- |  |  |  |  |
|--|--|--|--|
|  |  |  |  |
|  |  |  |  |
|  |  |  |  |
|  |  |  |  |
|  |  |  |  |
|  |  |  |  |



# Culver

PUBLIC MARKET



*For more information please contact:*

**MATTHEW FAINCHEIN**

Senior Director | Retail Services

Lic. 01503546

T (310) 595-2234

[matthew.fainchtein@cushwake.com](mailto:matthew.fainchtein@cushwake.com)

**CARTER MAGNIN**

Senior Associate | Retail Services

Lic. 01909728

T (310) 595-2203

[carter.magnin@cushwake.com](mailto:carter.magnin@cushwake.com)



**CUSHMAN &  
WAKEFIELD**

**Regency<sup>®</sup>  
Centers.**