

65
EAST
STATE

BE
WHERE
IT HAPPENS.

1,000 Car
Underground
Garage

Class A
Recently renovated
office building

Energy Efficient
Energy Star Certified
2007 & 2014

Amenities
within walking
distance

Community
Conference
Center

Security
24-Hour Key
Card Access

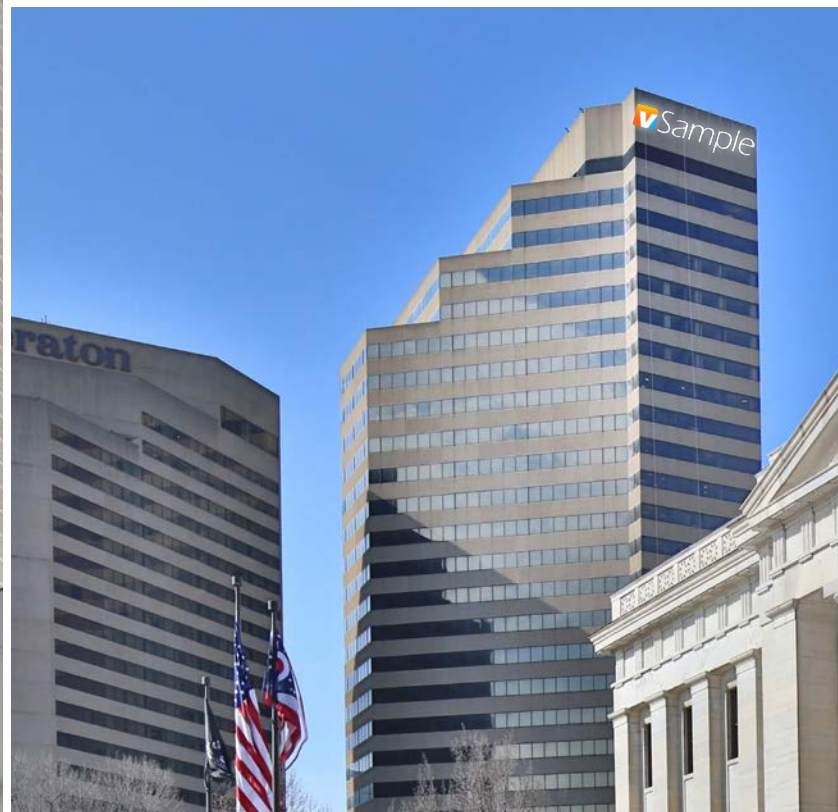


65 E STATE | BE WHERE IT HAPPENS.
www.65eaststate.com

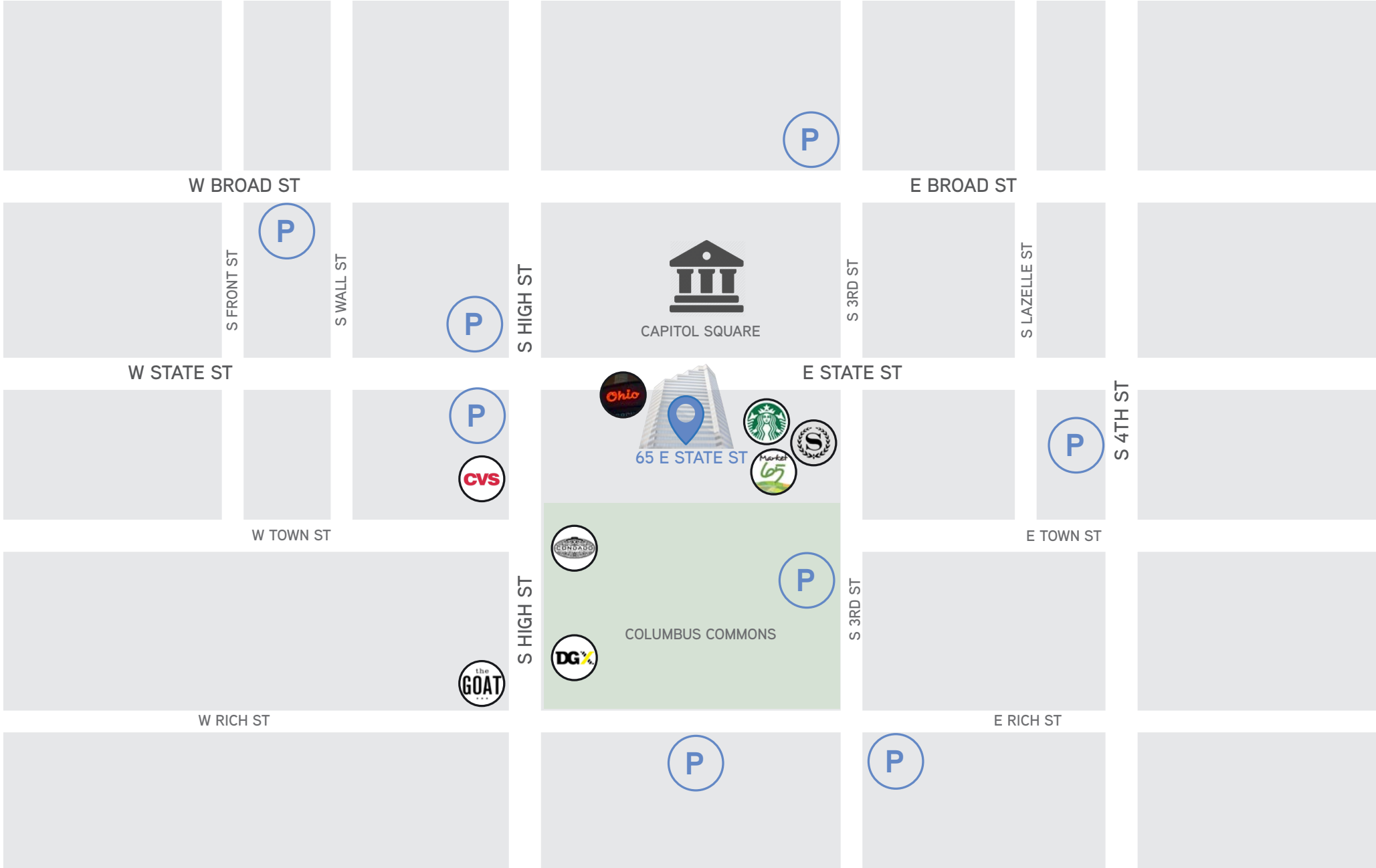




Building Availability
 Building signage available for anchor tenant



Interactive - click on suite
 for video tour



Suites Available up to 6,000 RSF

Suite L100	3,502 RSF	Office/retail
Suite R108	1,345 RSF	Retail; fully built out dental space
Suite 225	5,105 RSF	Open space with perimeter hard wall offices
Suite 310	4,727 RSF	Some open space with perimeter offices
Suite 312	4,643 RSF	Great views of Statehouse
Suite 750	3,799 RSF	Perimeter hard wall offices; overlooks the Commons
Suite 820	2,630 RSF	Mostly open space. <i>Can combine with Suite 850 for a total of 7,700 SF.</i>
Suite 850	5,070 RSF	Mostly private offices. <i>Can combine with Suite 820 for a total of 7,700 SF.</i>
Suite 1250	4,246 RSF	Mix of offices and open space; overlooks the Commons
Suite 1320	3,785 RSF	Mostly open space
Suite 1500	4,324 RSF	Mostly hard wall offices
Suite 2540	3,816 RSF	Open space with hard wall offices and outdoor patio. <i>Can combine with Suite 2550 for a total of 6,783 SF.</i>
Suite 2550	2,967 RSF	Perimeter offices with open space. <i>Can combine with Suite 2540 for a total of 6,783 SF.</i>

Large Suites Available up to 74,940 Contiguous RSF

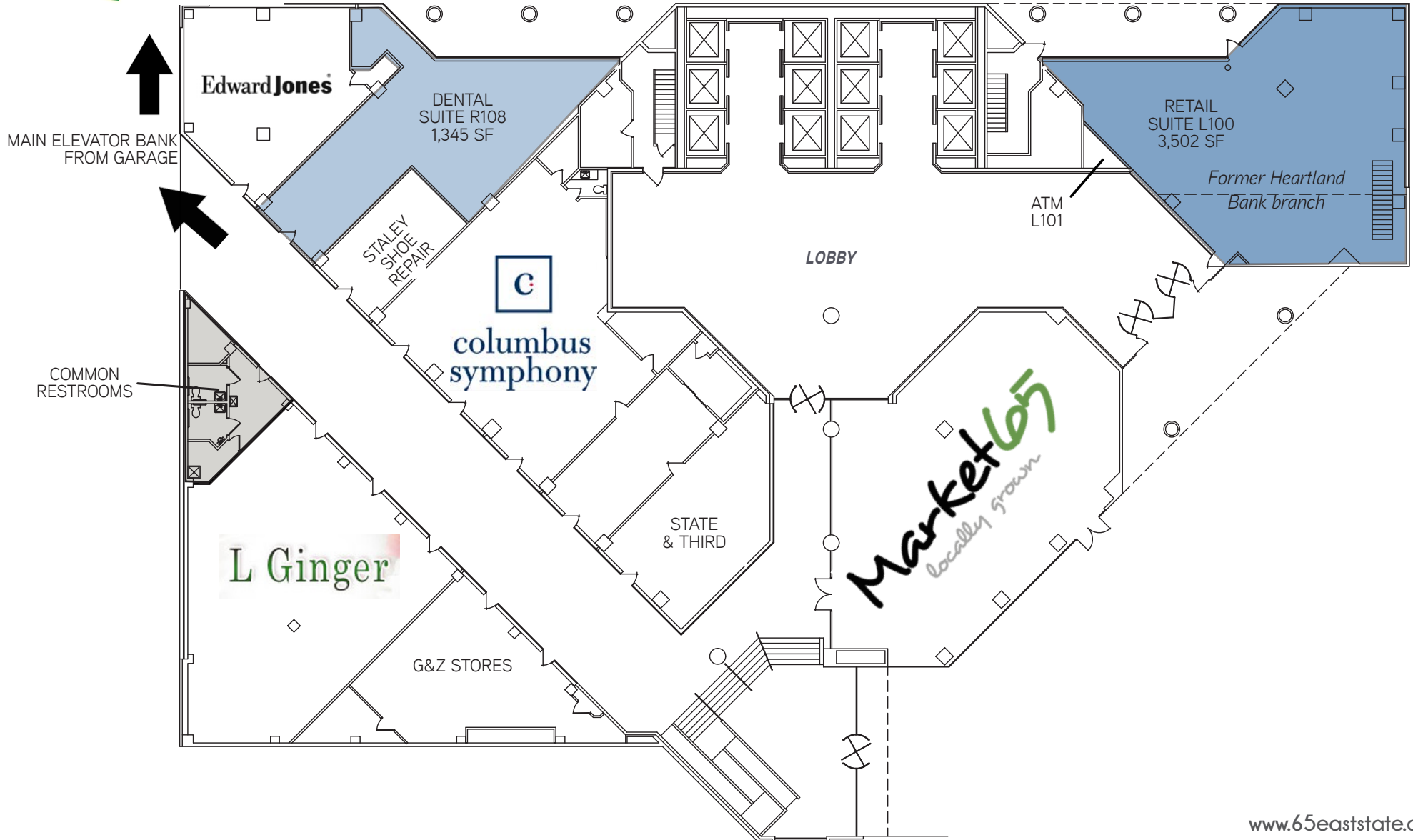
Suite 305	7,596 RSF	Some open space with perimeter offices
Suite 400	19,377 RSF	Perimeter hard wall offices; <i>divisible</i>
Suite 500	12,980 RSF	Excellent elevator lobby visibility, perimeter hard wall offices; <i>divisible</i>
Suite 550	6,382 RSF	Mostly open space with several offices
Suite 600	19,377 RSF	White box condition; <i>divisible</i>
Suite 820 & 850	7,700 RSF	Mostly private offices
Suite 900	19,362 RSF	Available November 2022; <i>divisible</i>
Suite 1000	19,362 RSF	Available November 2022; <i>divisible</i>
Suite 1150	8,931 RSF	Wide open space with several hard wall offices; <i>divisible</i>
Suite 1400	19,351	Available June 2022; <i>divisible</i>
Suite 1600	18,883 RSF	Perimeter offices with open space; <i>divisible</i>
Suite 2100	19,472 RSF	
Suite 2200	19,472 RSF	Partially built out space intended for WeWork. Great opportunity for the
Suite 2300	17,998 RSF	next tenant.
Suite 2400	17,998 RSF	
Suite 2540 & 2550	6,783 RSF	Perimeter offices with open space

Asking Rate: \$21.95-\$24.95 PSF MG

Ground Floor Availability



GALBREATH PAVILION



1st Floor

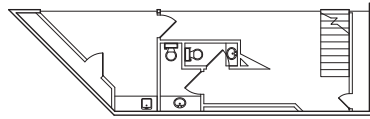
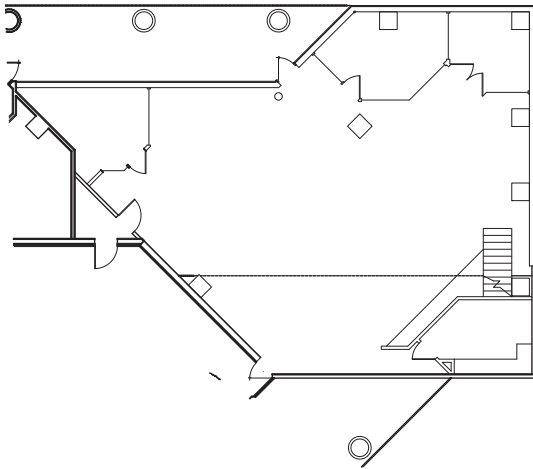
Suite L100

3,502 RSF (office/retail availability - former bank branch)

GALBREATH PAVILION

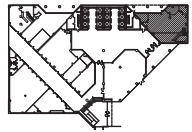
STATE HOUSE VIEW →

1st Floor



MEZZANINE

EAST STATE STREET



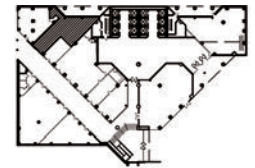
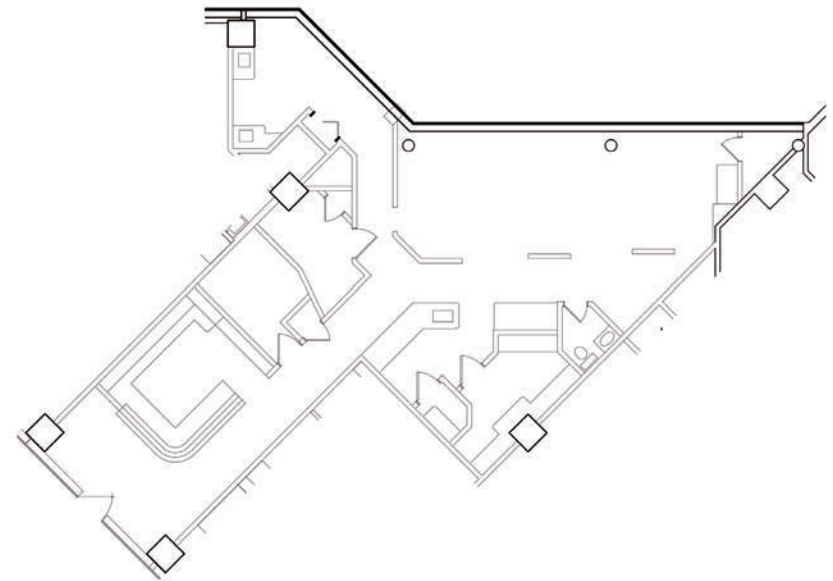
Building Key Plan

1st FLOOR N.T.S.



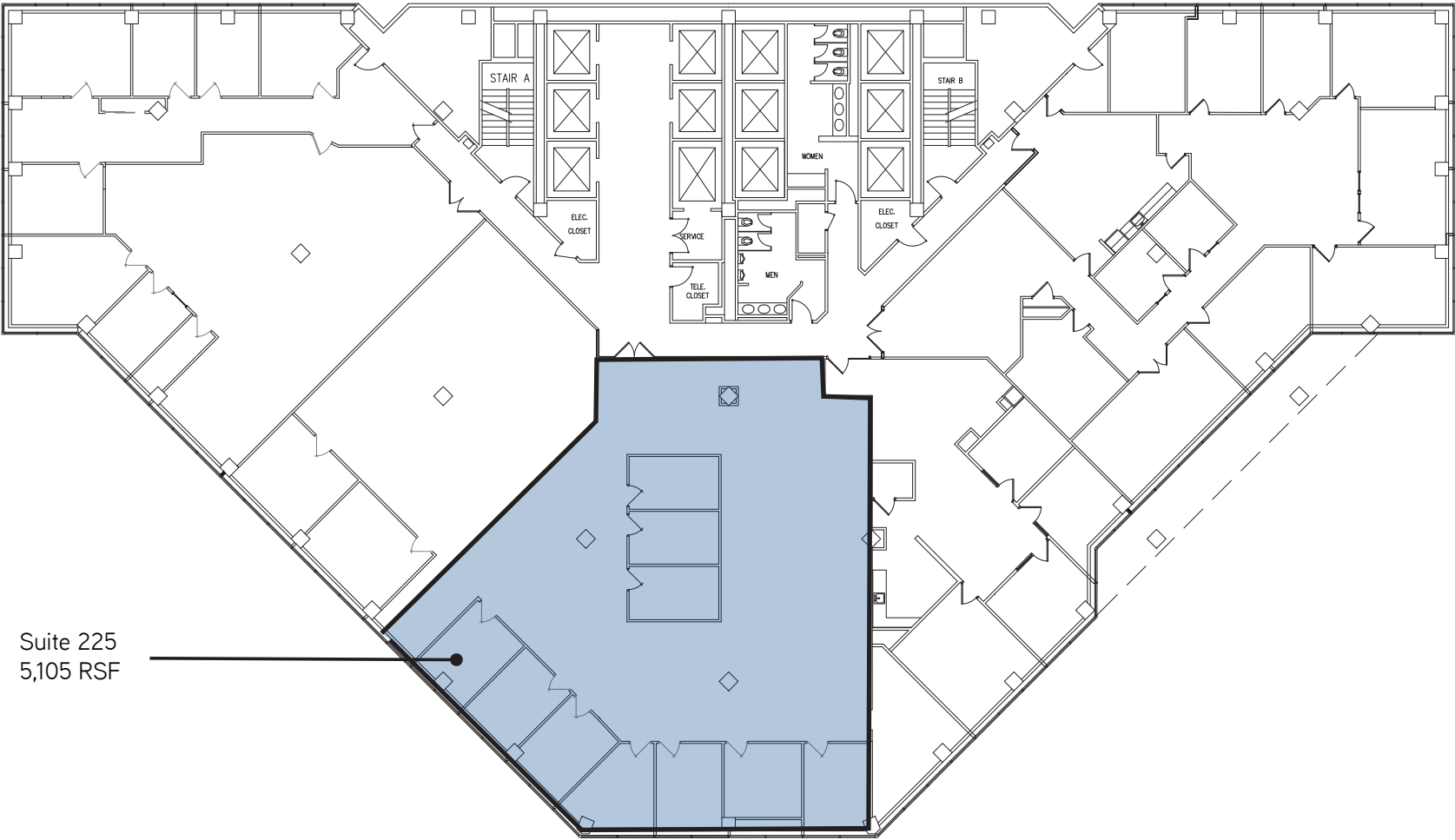
Suite R108

1,345 RSF (fully built out dental space)



KEY PLAN
NOT TO SCALE

2nd Floor

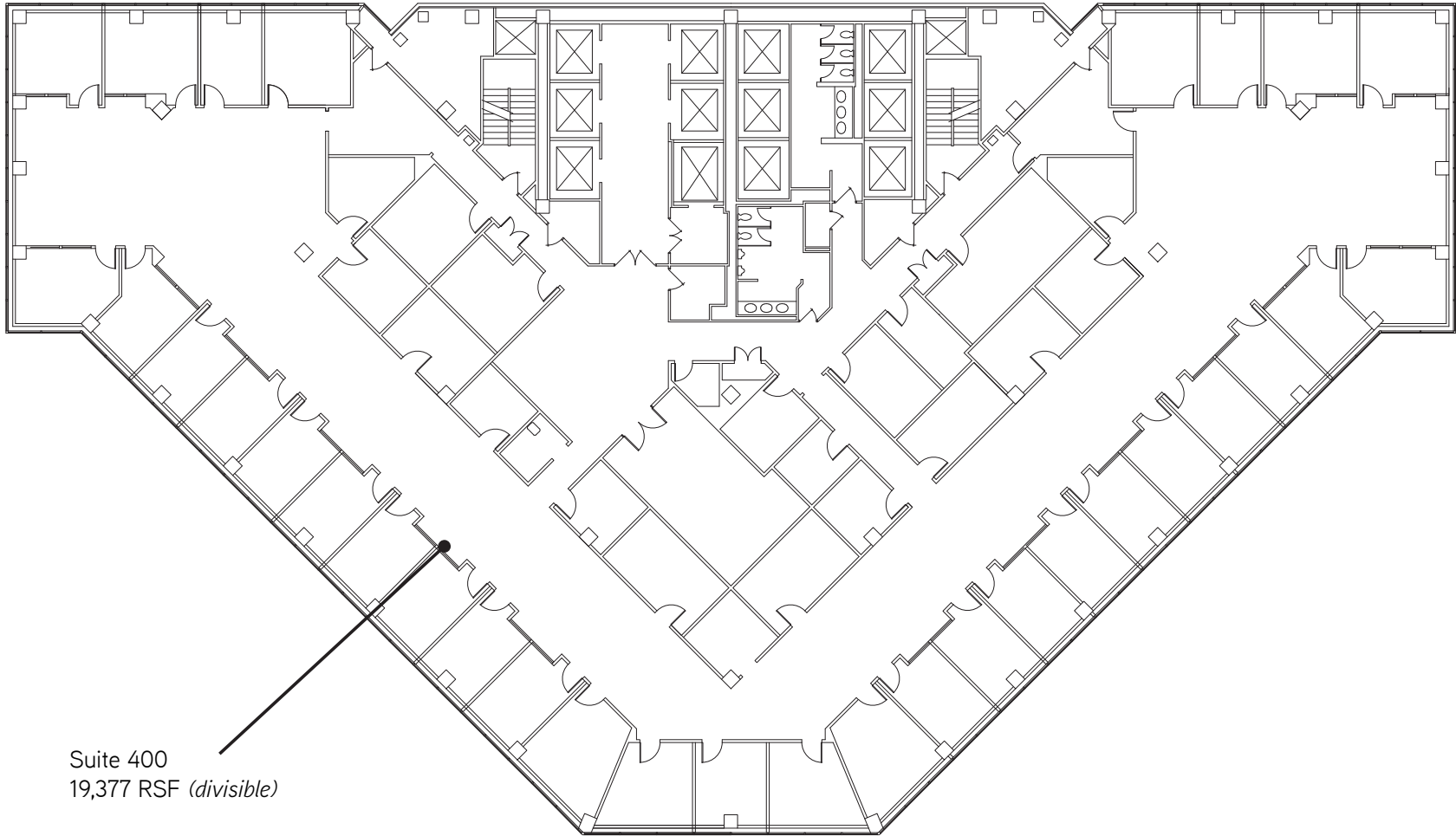


Suite 225
5,105 RSF

3rd Floor

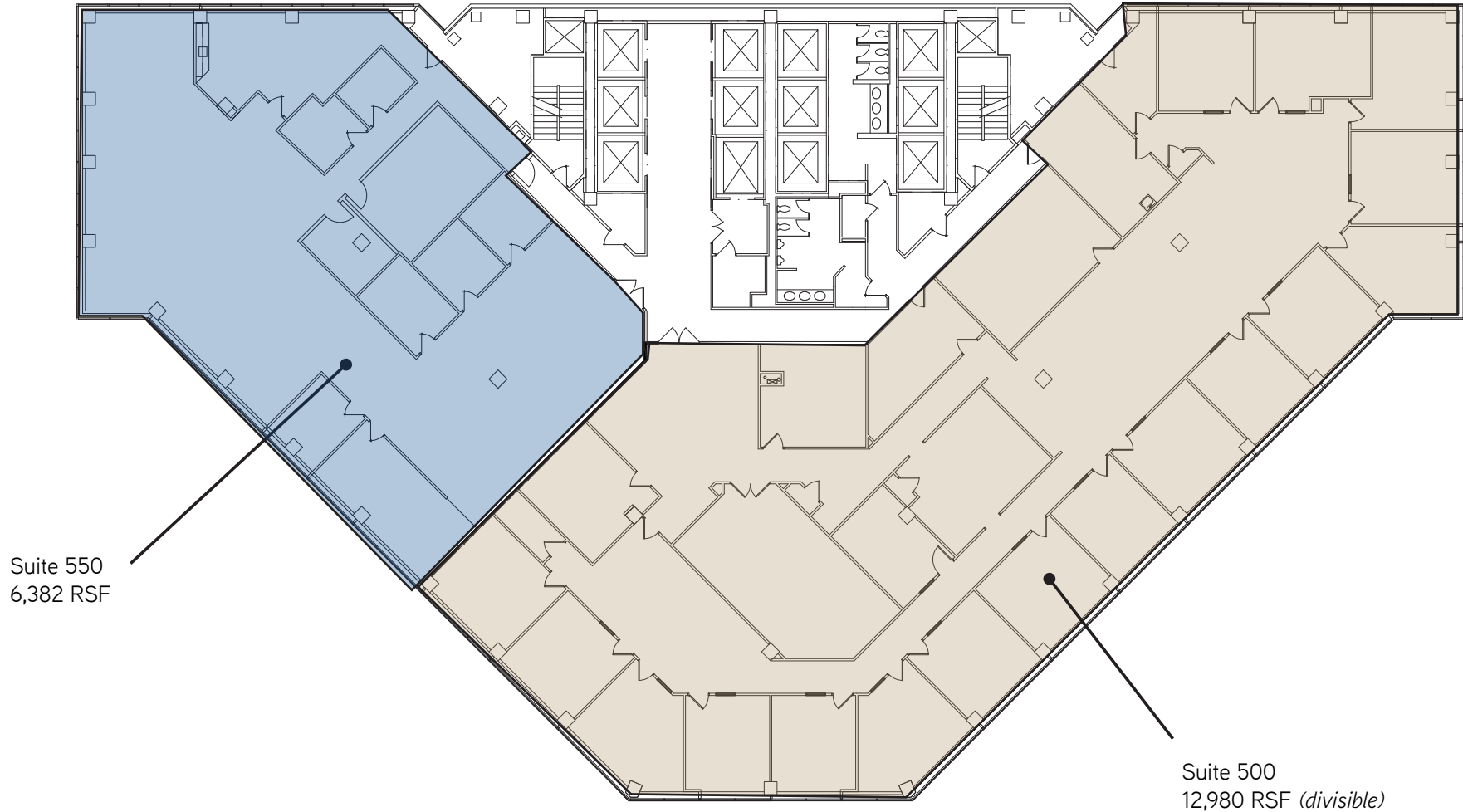


4th Floor

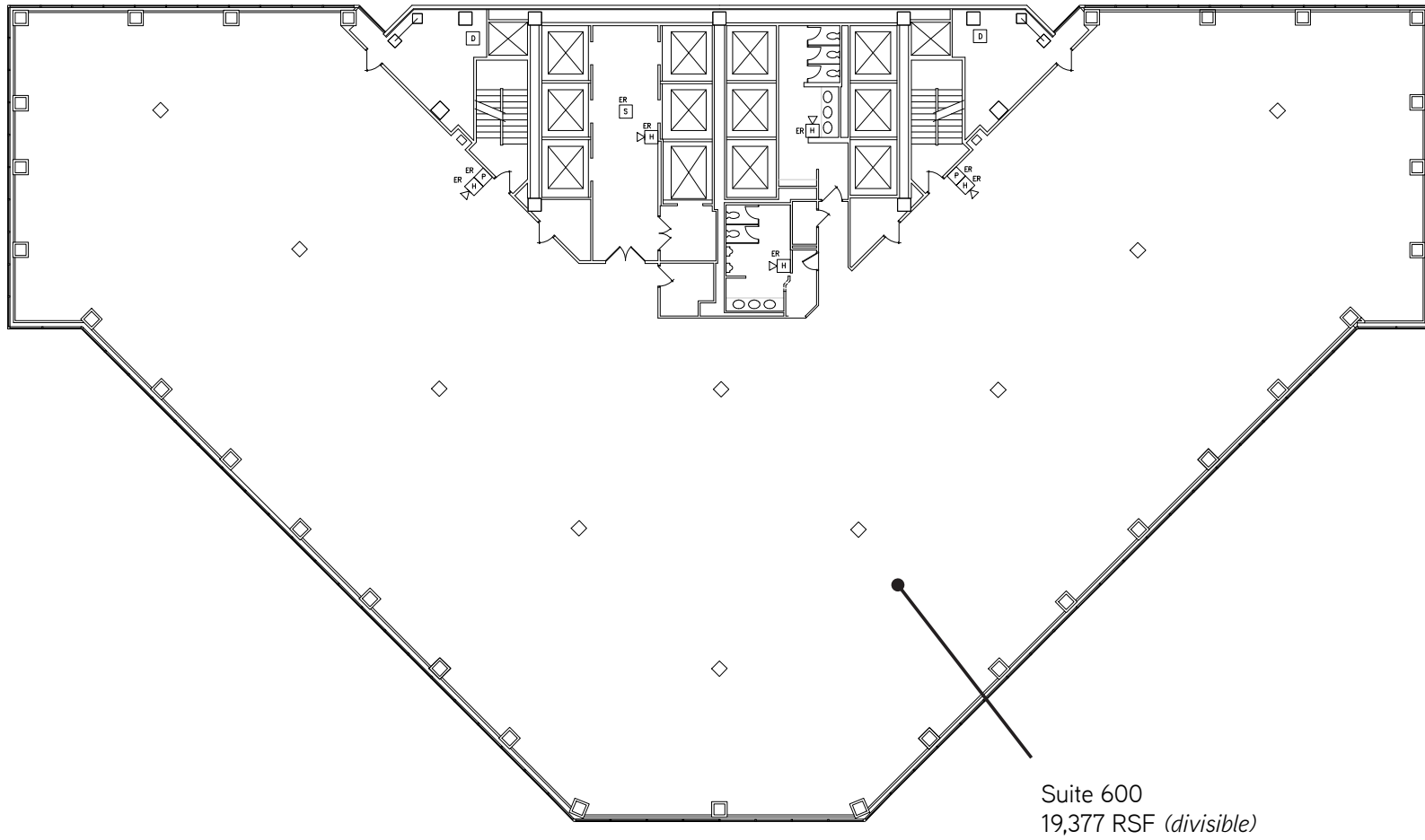


Suite 400
19,377 RSF (*divisible*)

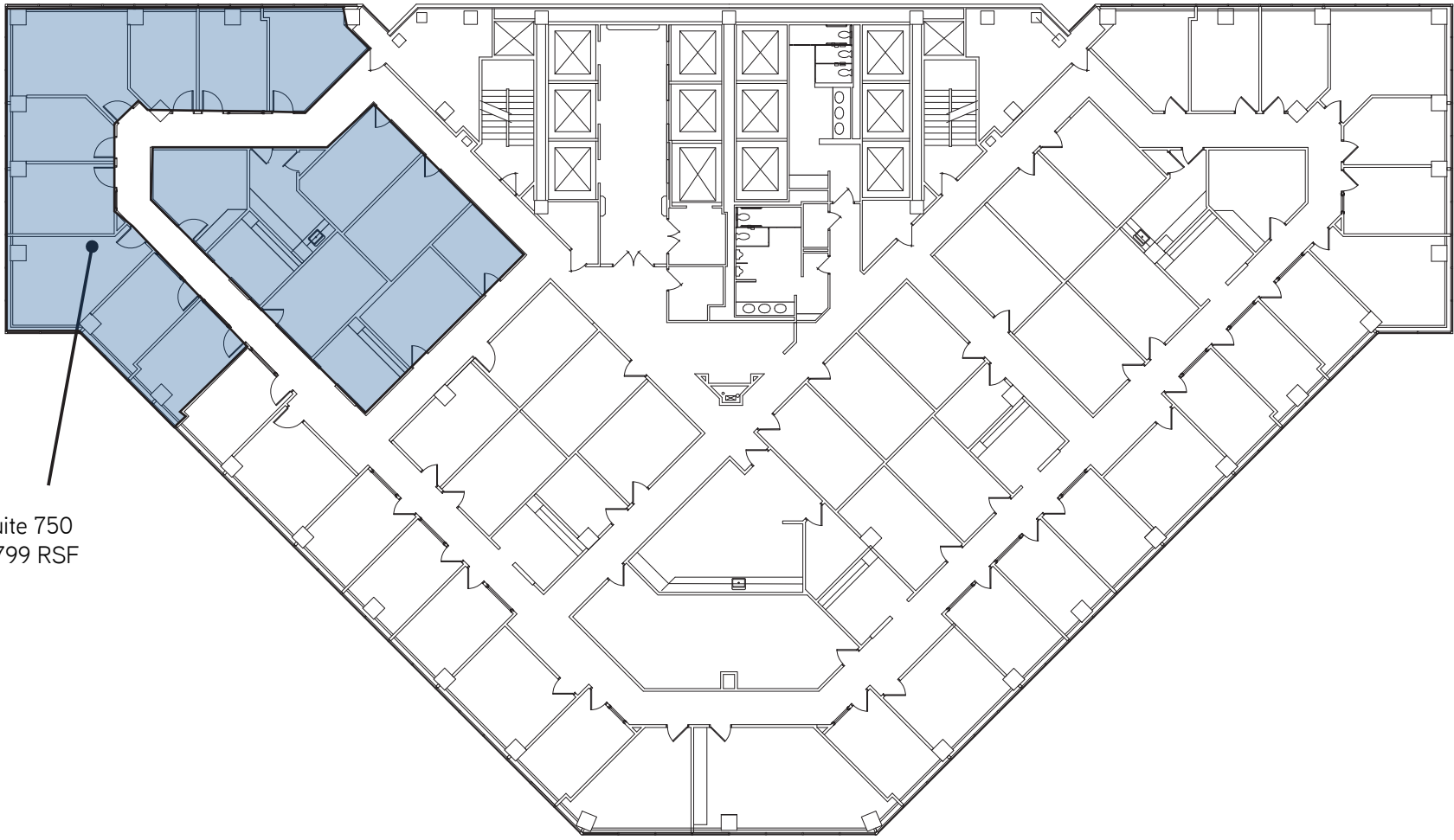
5th Floor



6th Floor



7th Floor



Suite 750
3,799 RSF

8th Floor

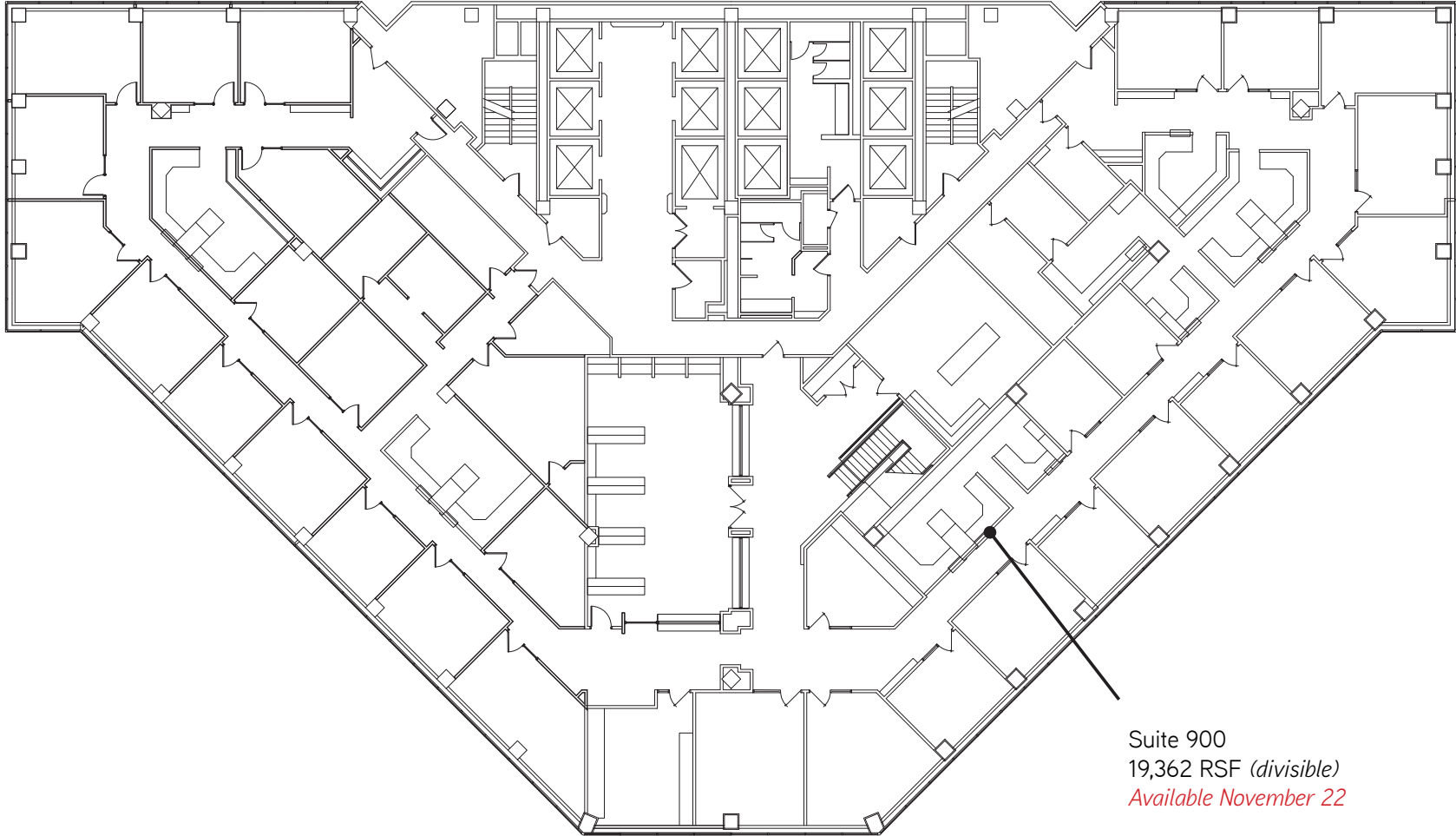


Suite 850
5,070 RSF

Contiguous up to 7,700 RSF

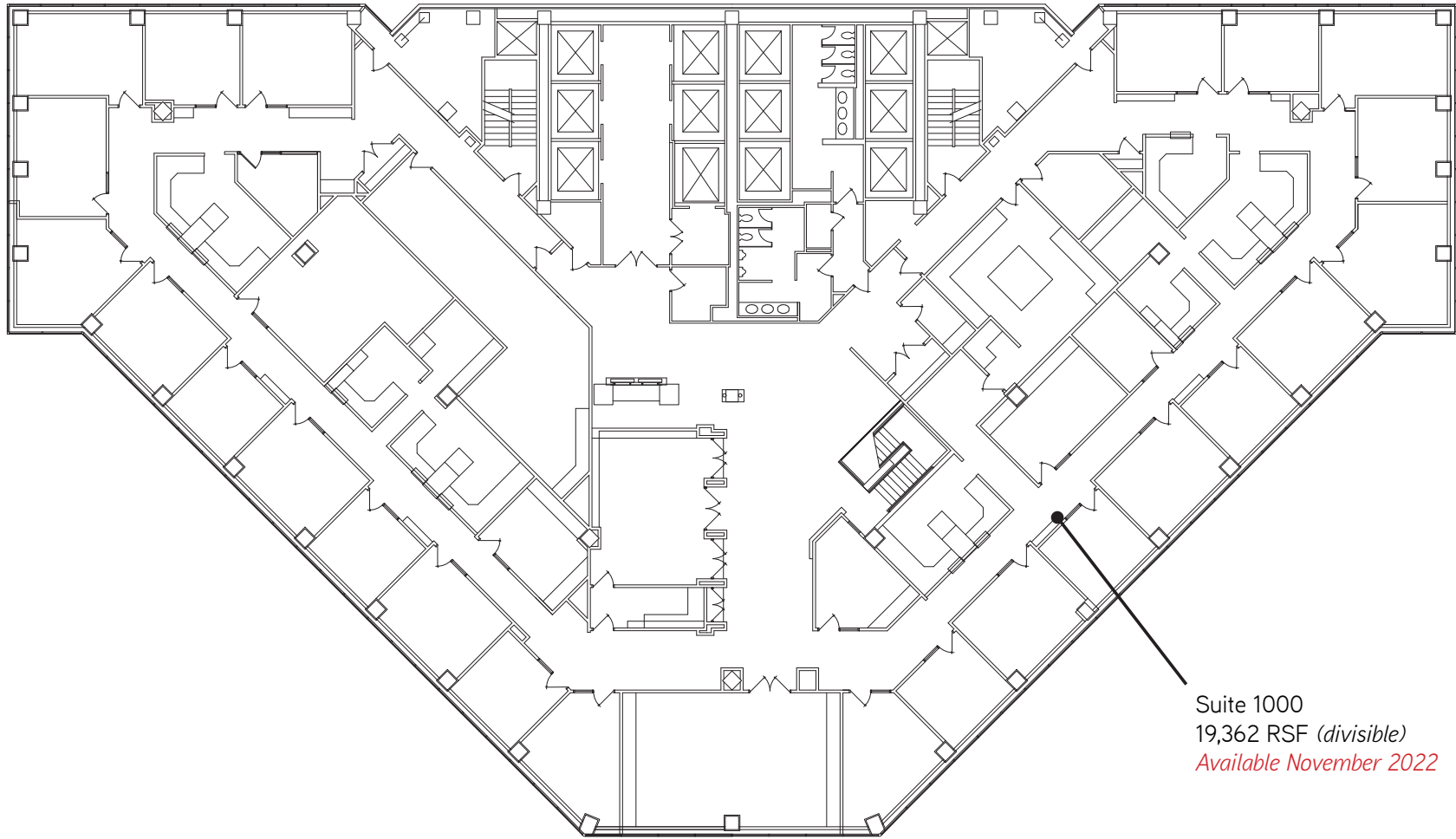
Suite 820
2,630 RSF

9th Floor



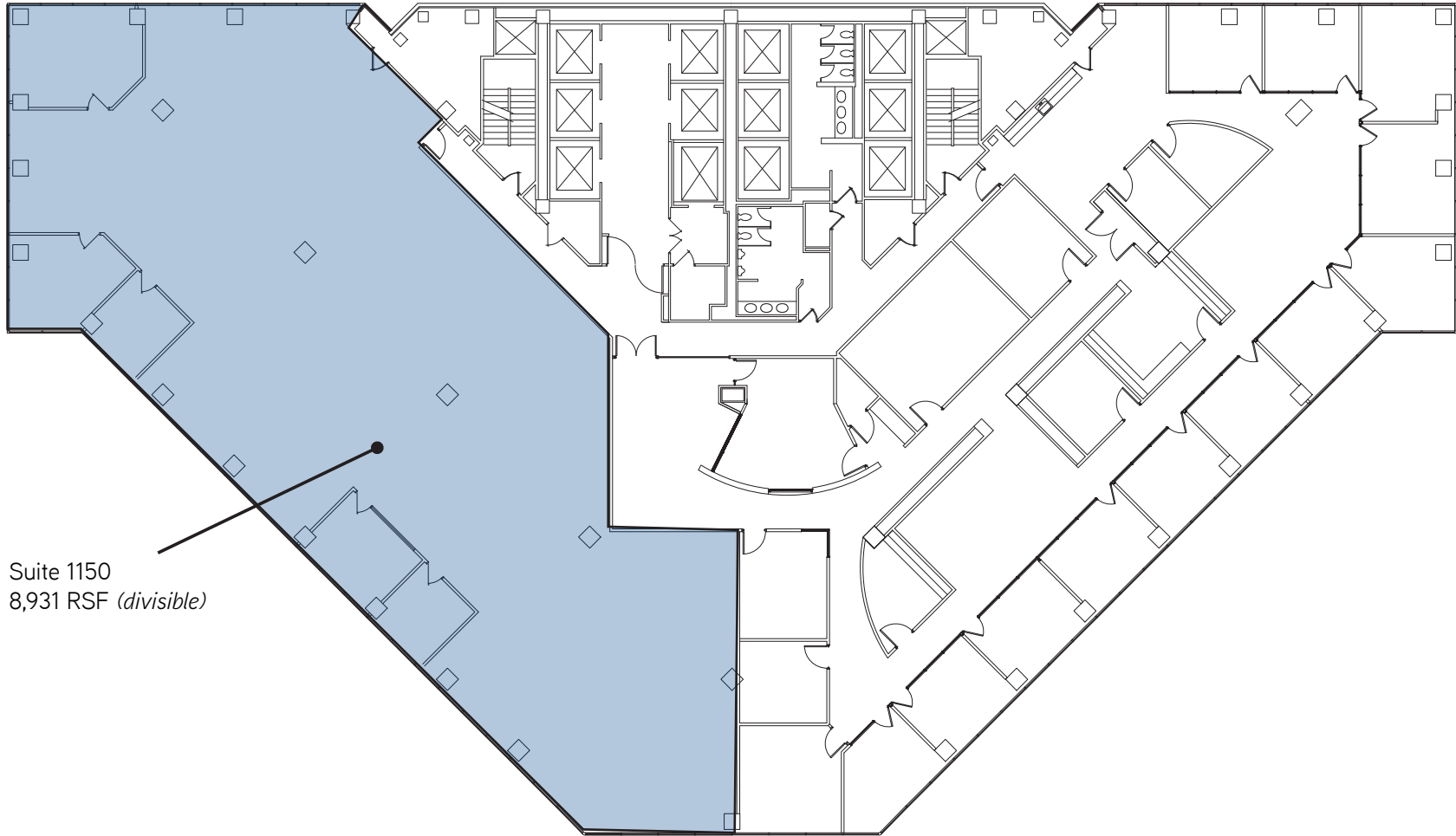
Suite 900
19,362 RSF (*divisible*)
Available November 22

10th Floor



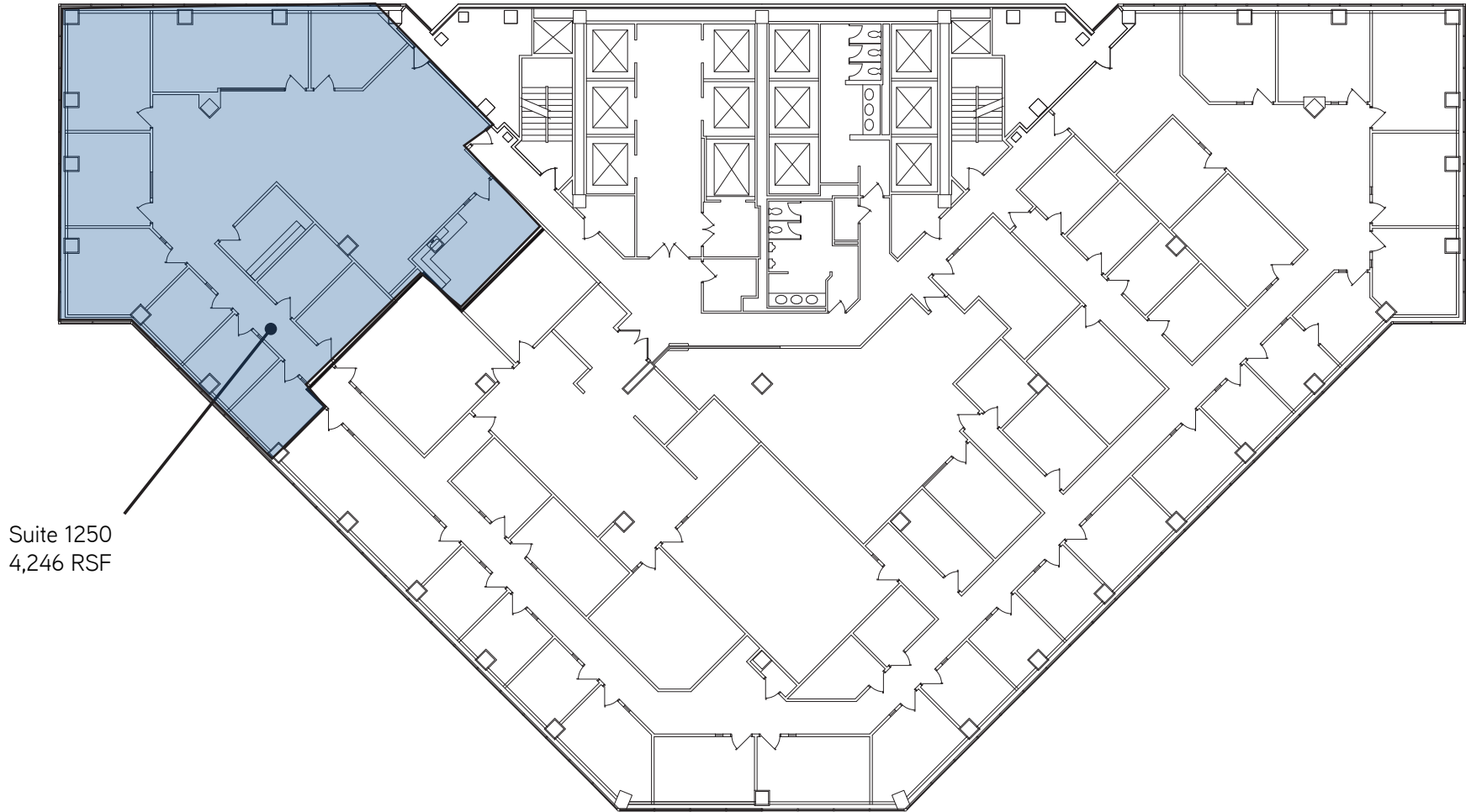
Suite 1000
19,362 RSF (*divisible*)
Available November 2022

11th Floor



Suite 1150
8,931 RSF (*divisible*)

12th Floor



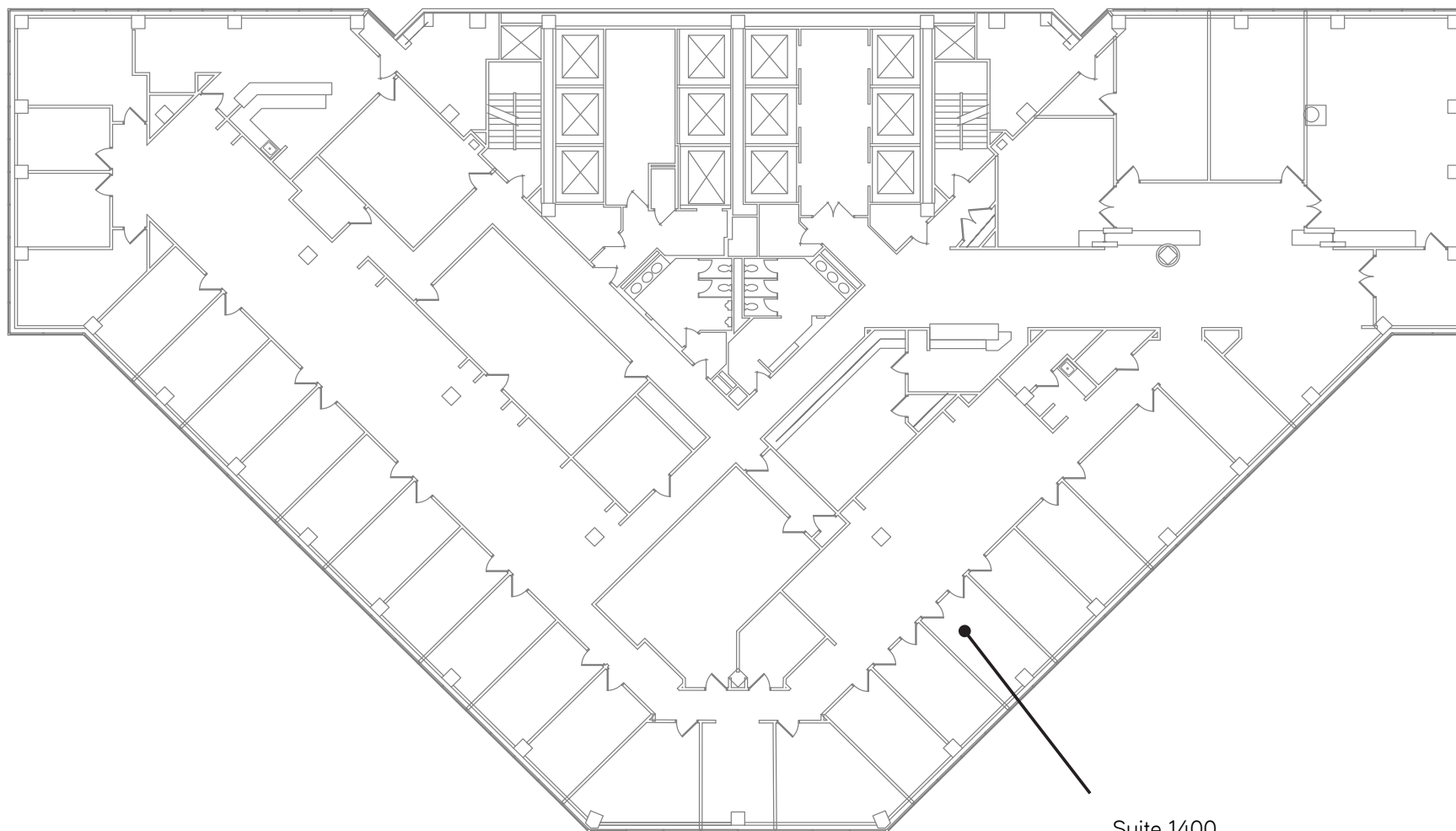
Suite 1250
4,246 RSF

13th Floor



Suite 1320
3,785 RSF

14th Floor



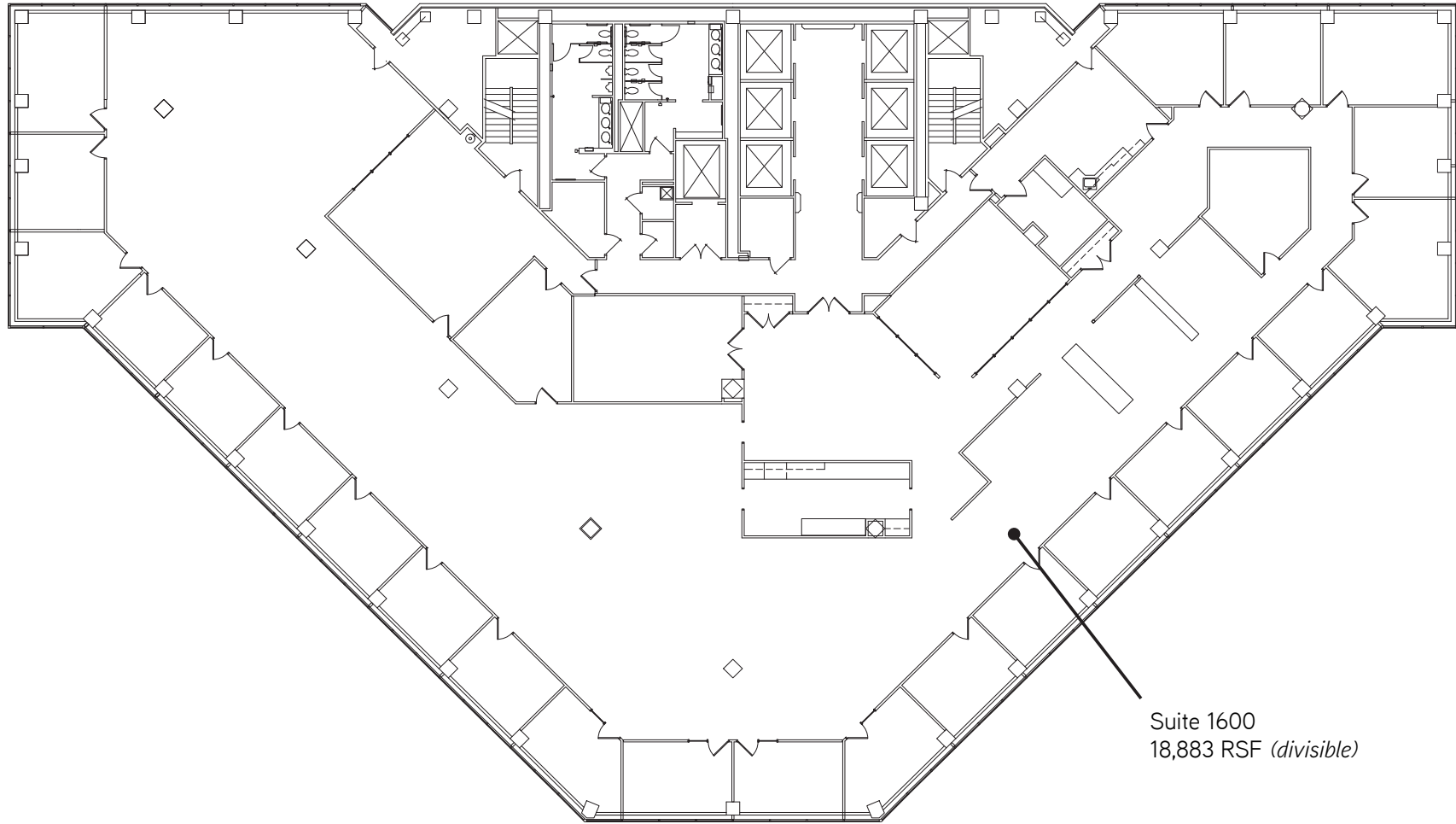
Suite 1400
19,351 RSF (*divisible*)
Available June 2022

15th Floor



Suite 1500
4,324 RSF

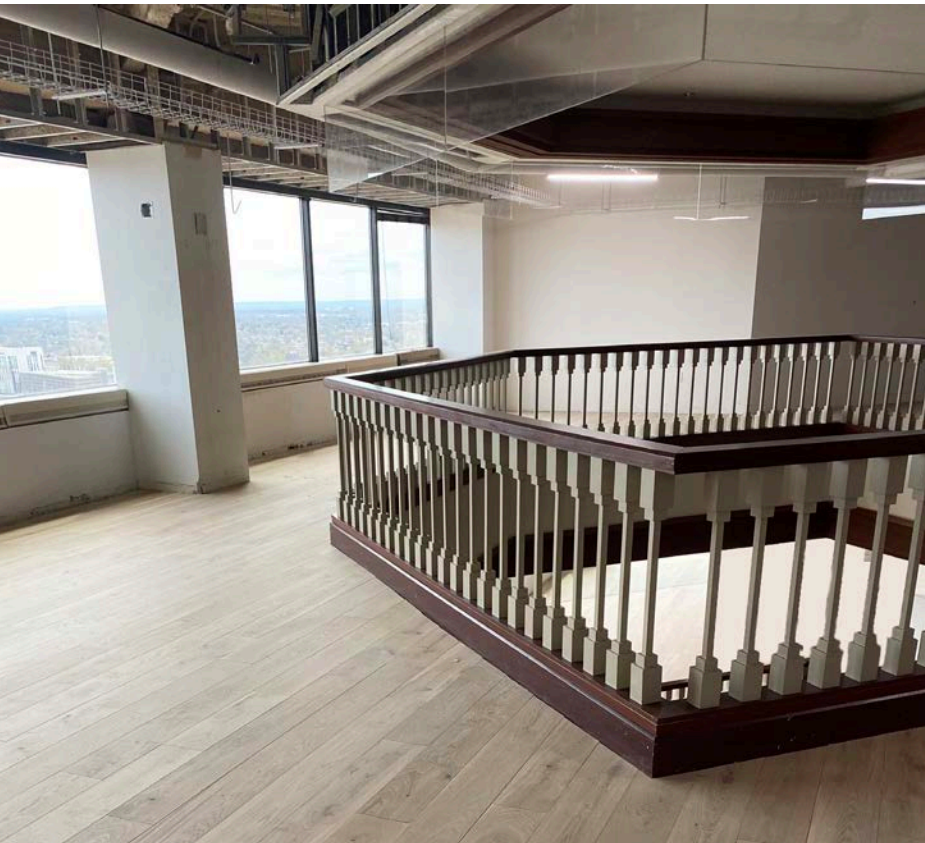
16th Floor



Suite 1600
18,883 RSF (*divisible*)

Floors 21-24

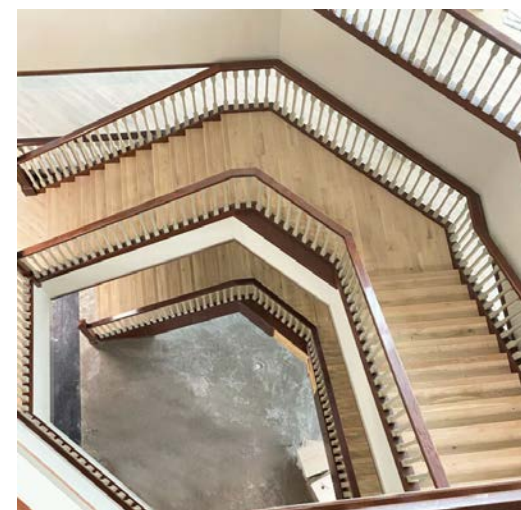
Former WeWork Space



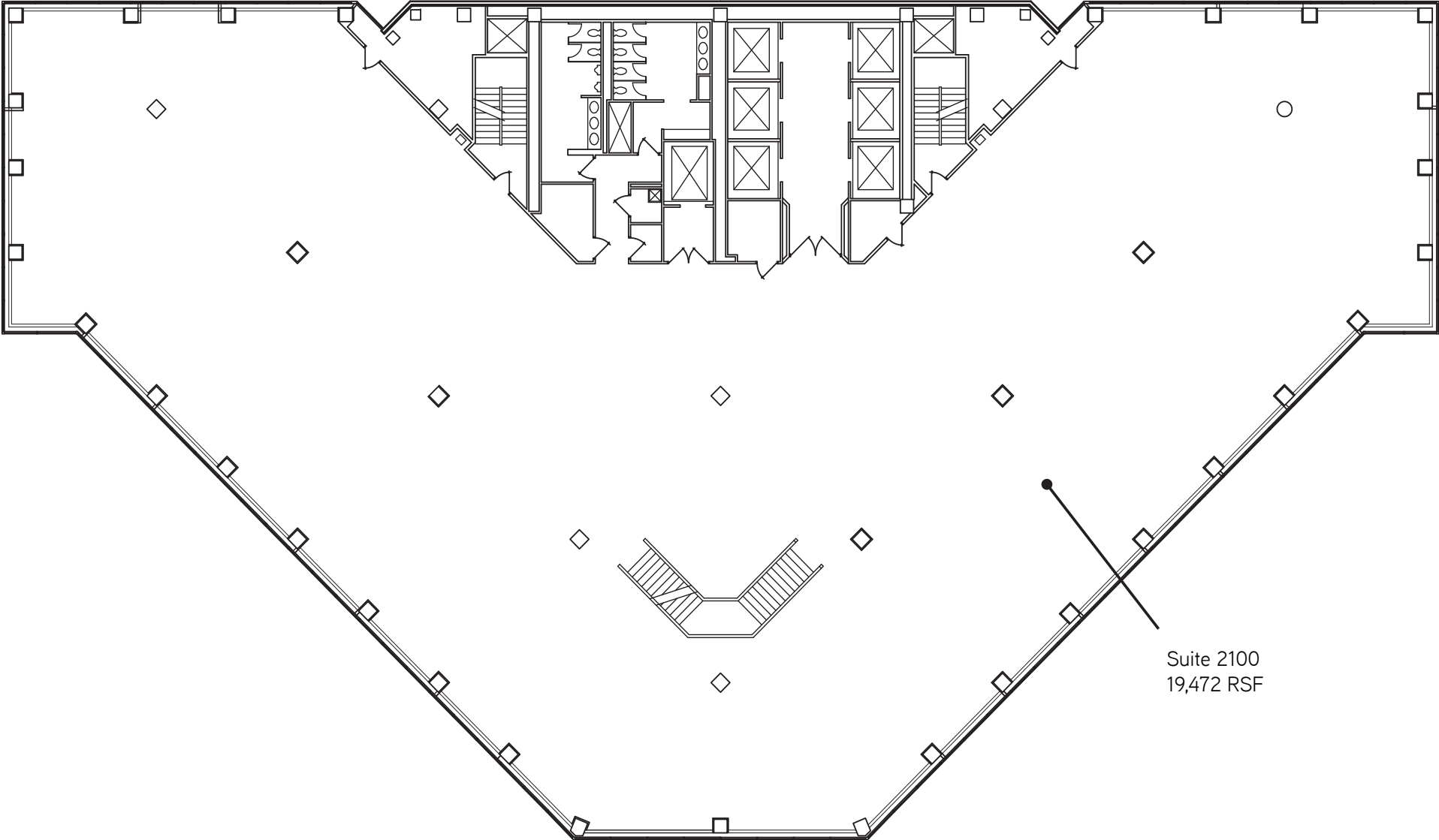
Features

- All new restrooms with increased capacity
- All new sprinklers
- Brand new HVAC throughout

Total of
\$6M in
improvements

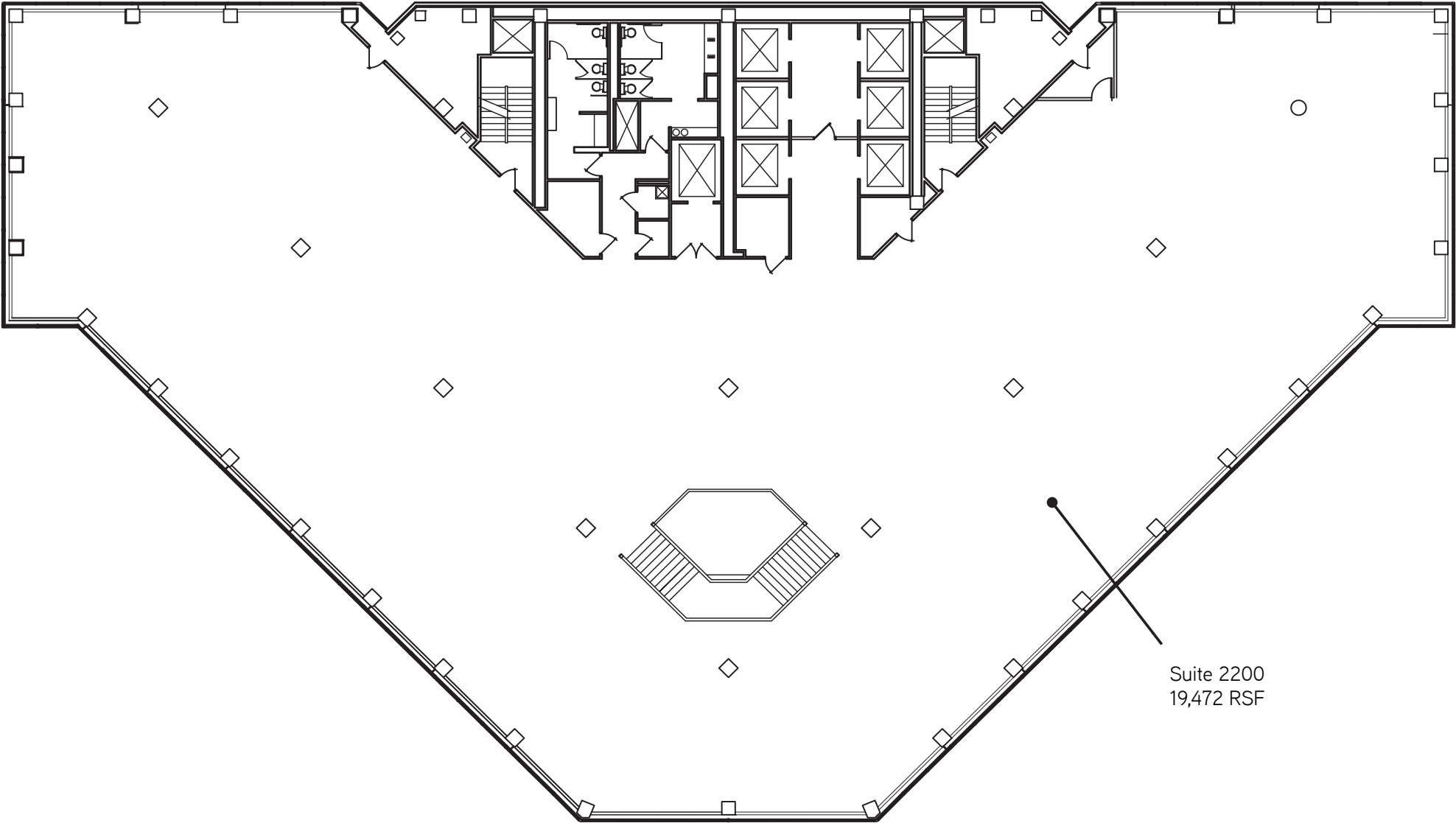


21st Floor



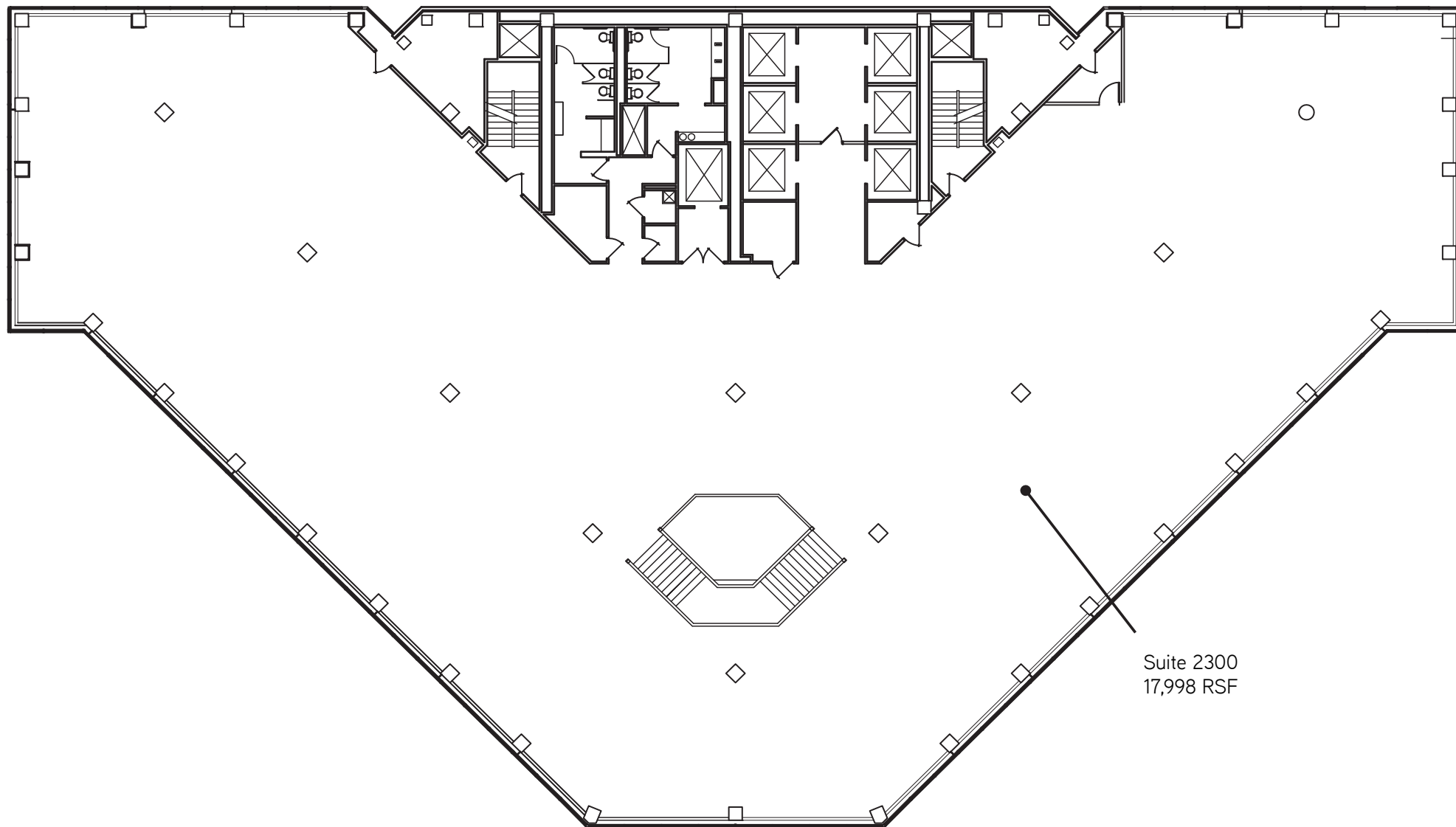
Suite 2100
19,472 RSF

22nd Floor



Suite 2200
19,472 RSF

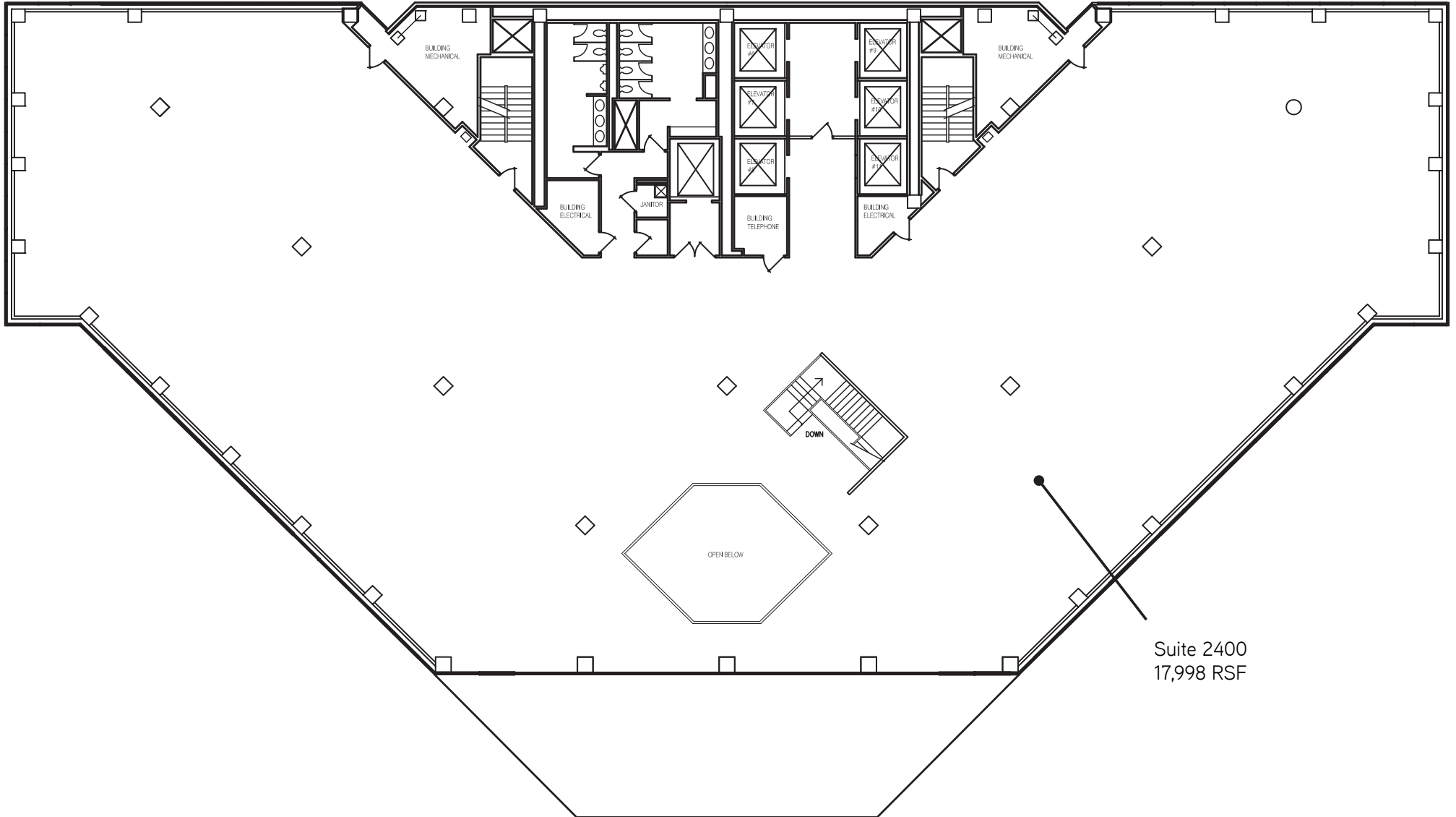
23rd Floor



Suite 2300
17,998 RSF

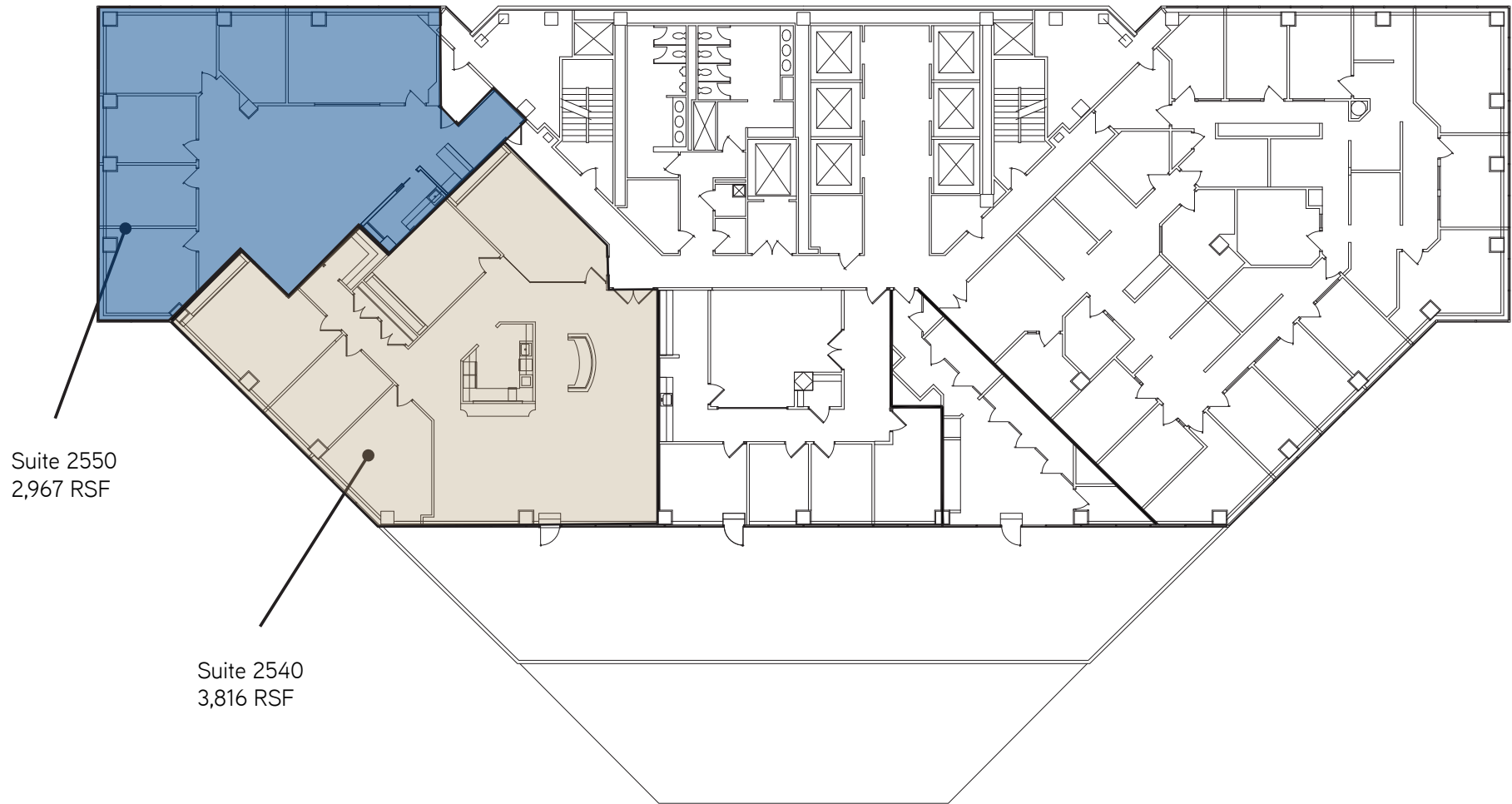
24th Floor

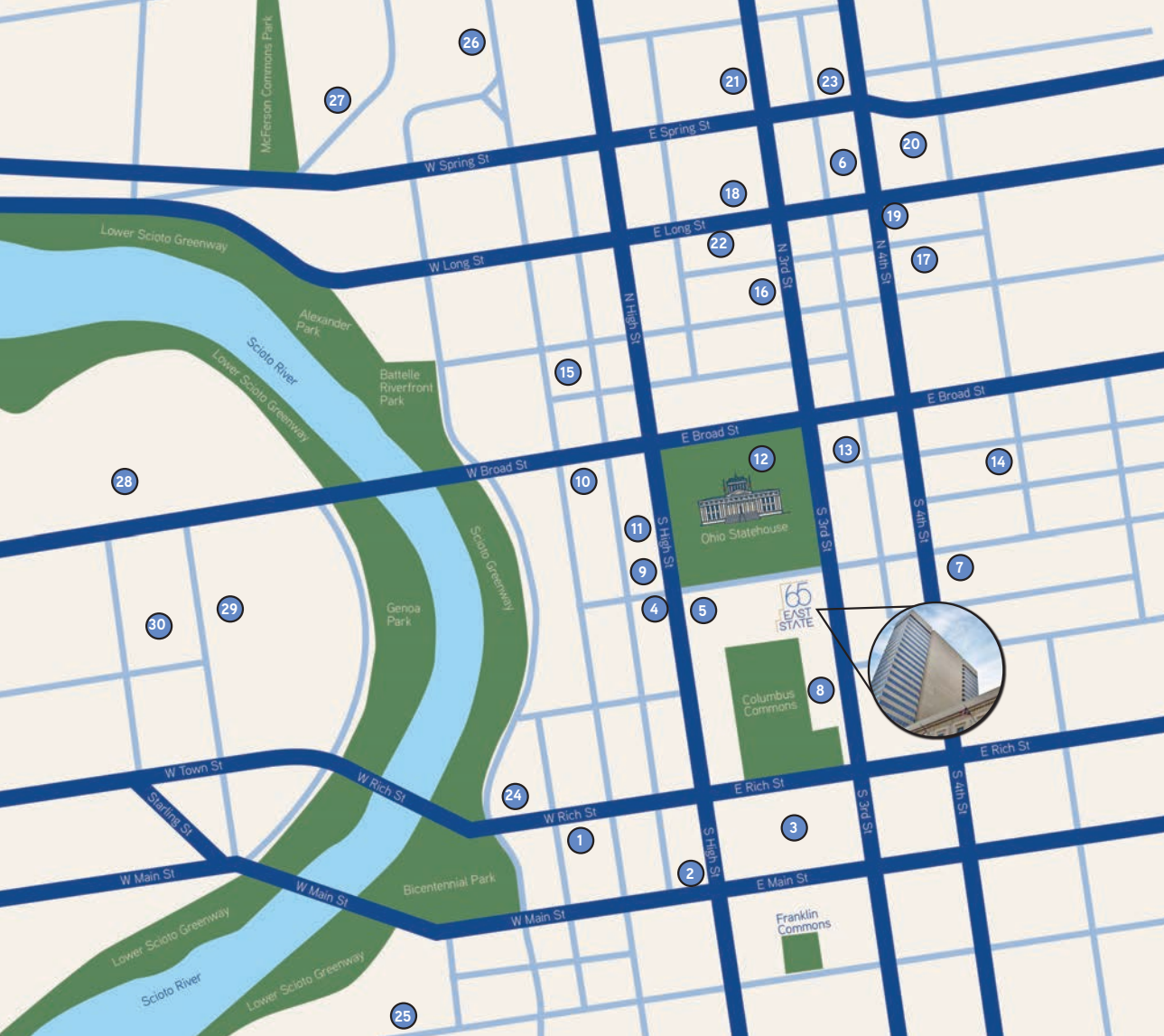
SUITE 2400
17,998 RSF



Suite 2400
17,998 RSF

25th Floor





Parking Options

Parking Location	Spaces	Monthly (unreserved)	Monthly (reserved)	Daily
1 RiverSouth Parking Garage	773	\$105	\$170	\$2 - 12
2 269 S High St	41	\$40	-	\$3 - 7
3 Columbus Commons Main	3,677	\$110	\$170	\$1 - 12
4 107 S High St	115	\$195	\$230	\$8 - 15
5 Fifth Third Building	428	\$195	\$250	\$3 - 13
6 General Tire Lot	59	\$100	-	\$6
7 185 - 201 E State St	100	\$100	-	\$3 - 7
8 Columbus Commons Underground	954	\$180	\$250	\$3 - 17
9 Riffe Center	500	-	-	\$2 - 13
10 Huntington Plaza	220	-	-	\$2 - 20
11 Huntington Center Garage	1,000	\$190	-	\$2 - 20
12 Ohio State House	1,200	-	-	\$2 - 14
13 Galleria Garage	94	-	-	\$2 - 14
14 Capital Plaza Garage	1,475	\$140	\$200	\$1 - 9
15 LeVeque Tower	1,157	\$230	\$400	\$5 - 20
16 3rd and Gay Bank Lot	75	-	-	\$4 - 15
17 Fourth and Elm Garage	680	\$110	\$170	\$2 - 10
18 60 E Long St	564	\$95	\$215	\$6 - 20
19 110 N 4th and Long St	60	-	-	\$3 - 8
20 168 N 4th St	162	\$100	-	\$3 - 8
21 74 E Spring St	88	-	\$60	\$5
22 Buckeye Garage	755	\$150	\$225	\$2 - 20
23 201 - 203 N 4th St	44	\$100	-	\$3 - 8
24 200 Civic Center	484	\$135	-	-
25 2 Miranova Pl	744	-	-	\$6
26 Front St Garage	3,150	-	-	\$5 - 20
27 245 Marconi Blvd	189	-	-	\$3 - 12
28 Veterans Memorial Lot	1,178	\$46	-	\$5 - 7
29 COSI Lot	616	-	-	\$5 - 8
30 330 Rush Alley	485	\$60	-	\$4-10
	21,067	\$125 avg	\$213 (avg)	\$3 - 13 (avg)



BE WHERE IT HAPPENS.

Contact:
Andrew Jameson
andrew.jameson@colliers.com
614-206-6882

Brett Cisler
brett.cisler@colliers.com
614 402 2252