

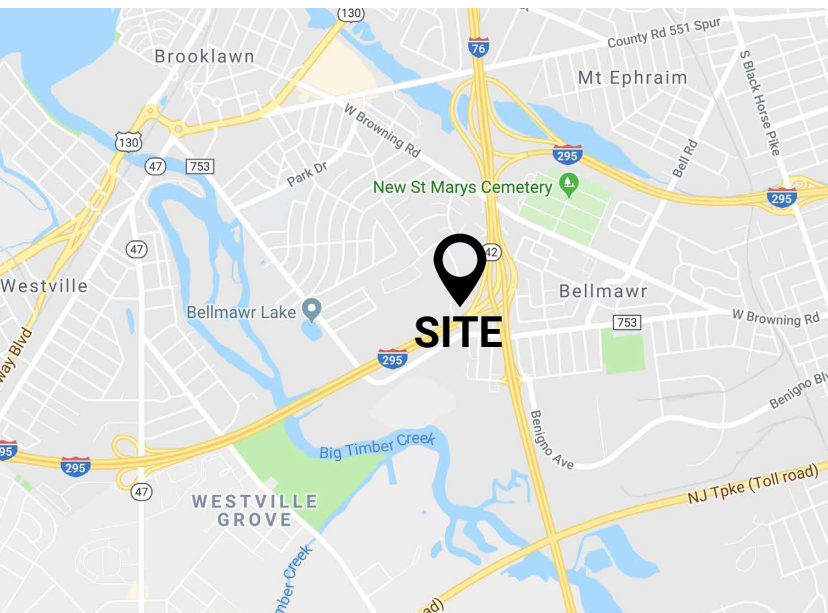
UP TO 6,775 SF OFFICE SPACE AVAILABLE

100 ESSEX AVE, BELLMAWR, NJ 08031

**FOR LEASE:
PRICE NEGOTIABLE**

PROPERTY FEATURES

- ✓ Up to 6,775 SF of Office Space For Lease
- ✓ Brand New Office Space
- ✓ Abundant Parking
- ✓ ADA Accessibility
- ✓ Tenant Specific Fit-Out Available
- ✓ Convenient Location
- ✓ Close Proximity to I-295 / I-76



CONTACT US

MARK TRANI

Phone: 610.359.1100
Cell: 302.383.5156
Email: m.trani@zmcre.com

CHASE GUNTHER

Phone: 610.359.1100
Cell: 610.505.2242
Email: cgunther@zmcre.com

1306 Wilmington Pike, Suite A-2
West Chester, PA 19382
610.359.1100

www.zmcre.com


ZOMMICK MCMAHON
COMMERCIAL REAL ESTATE

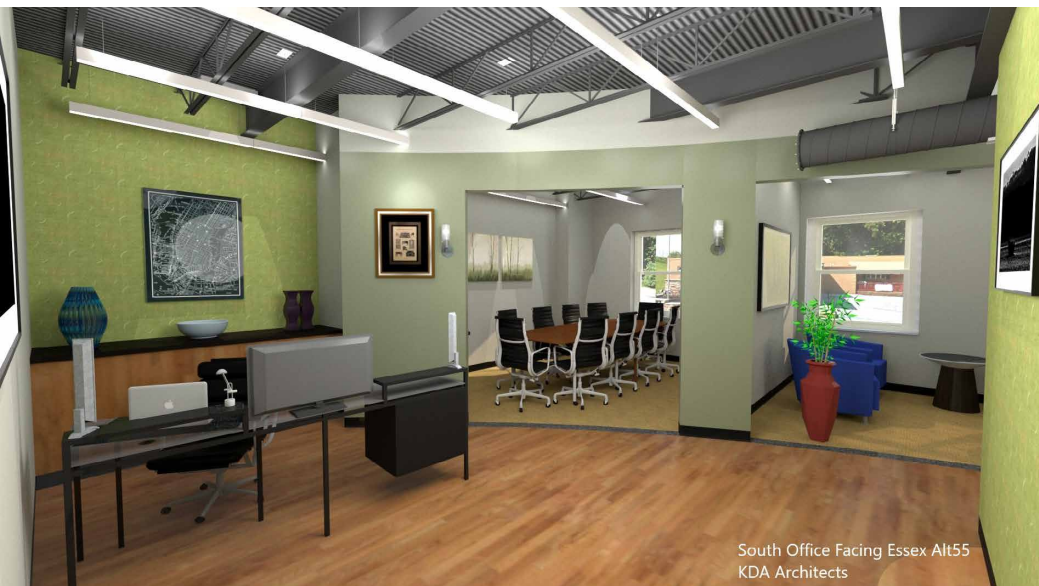
INTERIOR PROPERTY RENDERINGS: 100 ESSEX AVE



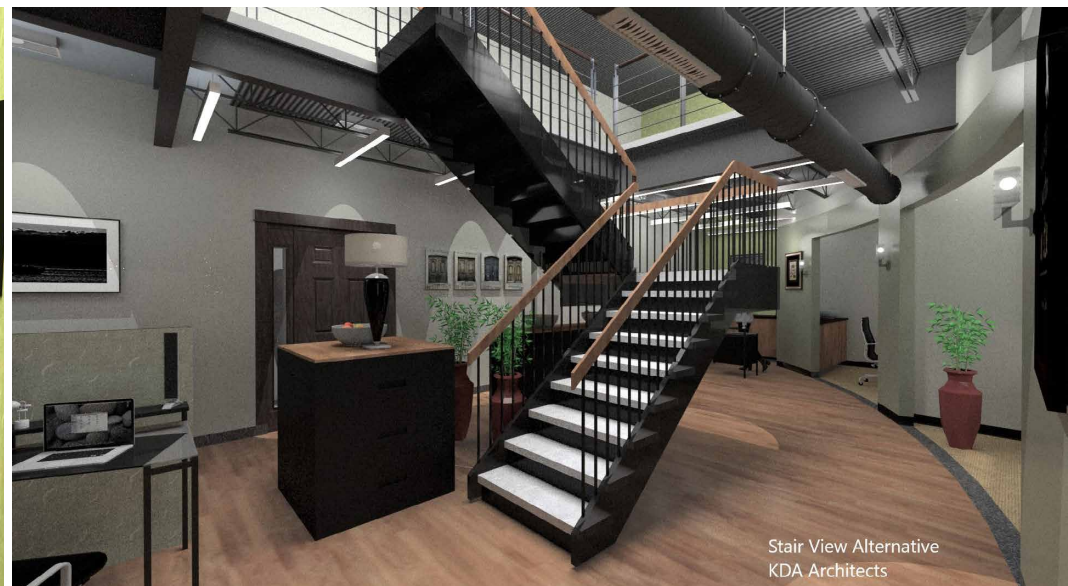
NW Entry Option View to Kitchen
KDA Architects



NW Entry View from Hall Entry
KDA Architects



South Office Facing Essex Alt55
KDA Architects



Stair View Alternative
KDA Architects


ZOMMICK MCMAHON
COMMERCIAL REAL ESTATE

CONTACT US

MARK TRANI

Phone: 610.359.1100

Cell: 302.383.5156

Email: m.trani@zmcre.com

CHASE GUNTHER

Phone: 610.359.1100

Cell: 610.505.2242

Email: cgunther@zmcre.com

1306 Wilmington Pike, Suite A-2

West Chester, PA 19382

610.359.1100

www.zmcre.com

BELLMAWR LOCATION AERIAL: 100 ESSEX AVE



CONTACT US

MARK TRANI

Phone: 610.359.1100

Cell: 302.383.5156

Email: m.trani@zmcre.com

CHASE GUNTHER

Phone: 610.359.1100

Cell: 610.505.2242

Email: cgunther@zmcre.com

1306 Wilmington Pike, Suite A-2

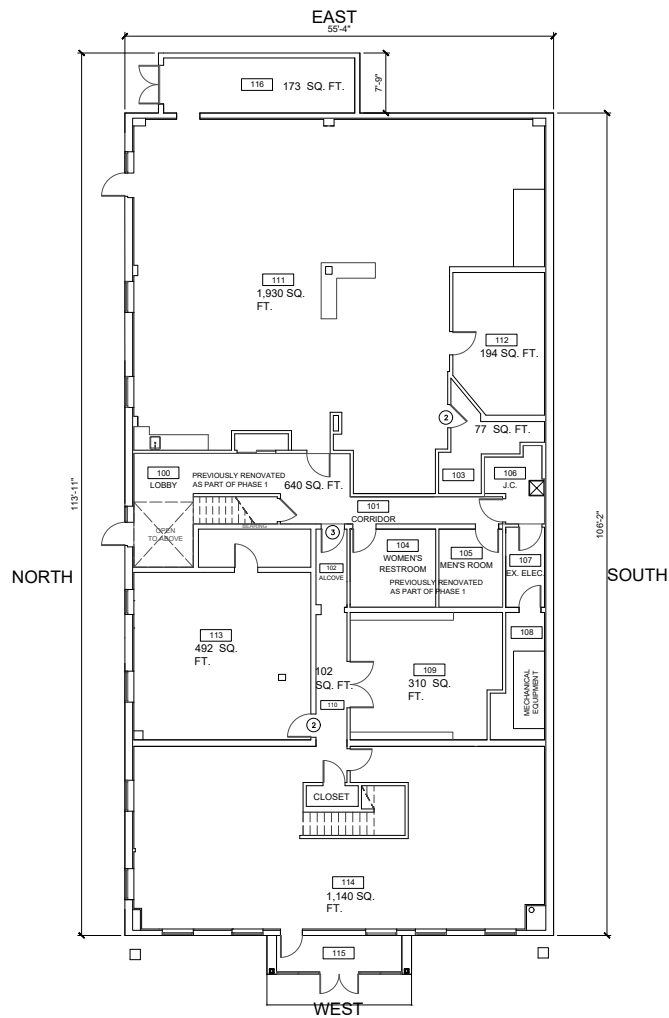
West Chester, PA 19382

610.359.1100

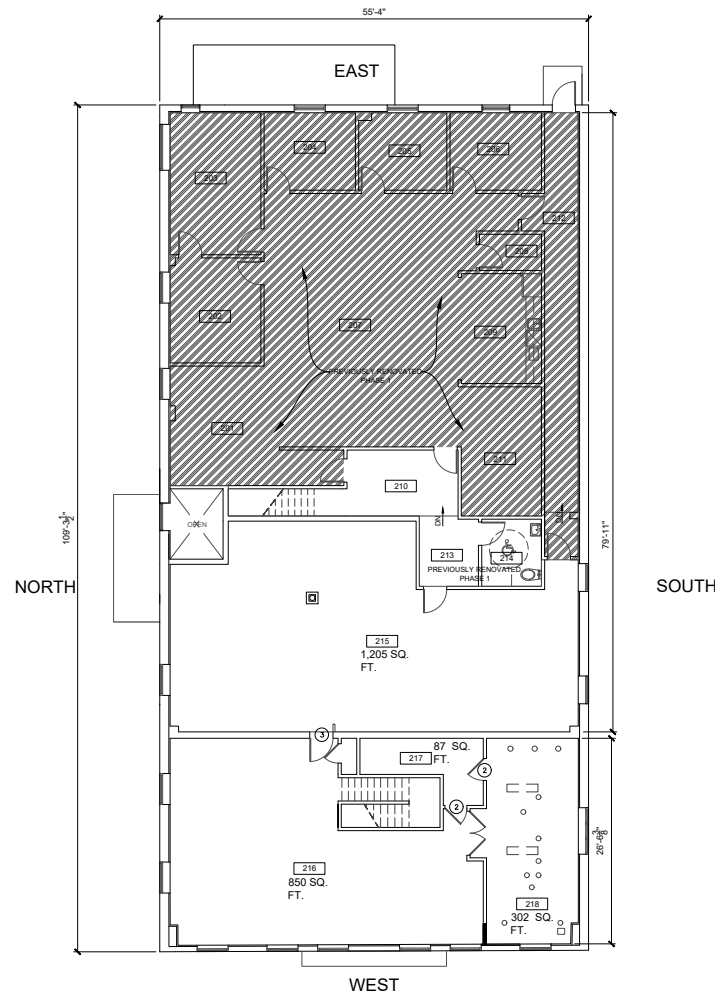
www.zmcre.com


ZOMMICK MCMAHON
COMMERCIAL REAL ESTATE

PROPERTY FLOOR PLAN: 100 ESSEX AVE



FIRST FLOOR



SECOND FLOOR

CONTACT US

MARK TRANI
Phone: 610.359.1100
Cell: 302.383.5156
Email: m.trani@zmcre.com

CHASE GUNTHER
Phone: 610.359.1100
Cell: 610.505.2242
Email: cgunther@zmcre.com

1306 Wilmington Pike, Suite A-2
West Chester, PA 19382
610.359.1100
www.zmcre.com

ABOUT ZOMMICK McMAHON COMMERCIAL REAL ESTATE

Zommick McMahon Commercial Real Estate, Inc. has been a Metro Philadelphia Area staple since its inception in 1949. The Company was founded by Joseph Zommick, and continues today with Ryan McMahon and his highly experienced staff, whom are all results-oriented professionals.

SOME OF OUR SATISFIED CLIENTS:

**ROYAL
FARMS**



Walgreens

WSFS bank
We Stand For Service

Regency
Centers.



Wawa

Bank of America



IRON HILL
BREWERY & RESTAURANT

**DUNKIN'
DONUTS**



Express
EMPLOYMENT PROFESSIONALS


ZOMMICK McMAHON
COMMERCIAL REAL ESTATE

CONTACT US

MARK TRANI

Phone: 610.359.1100
Cell: 302.383.5156
Email: m.trani@zmcre.com

CHASE GUNTHER

Phone: 610.359.1100
Cell: 610.505.2242
Email: cgunther@zmcre.com

1306 Wilmington Pike, Suite A-2
West Chester, PA 19382
610.359.1100
www.zmcre.com