

DEVELOPMENT LAND FOR SALE

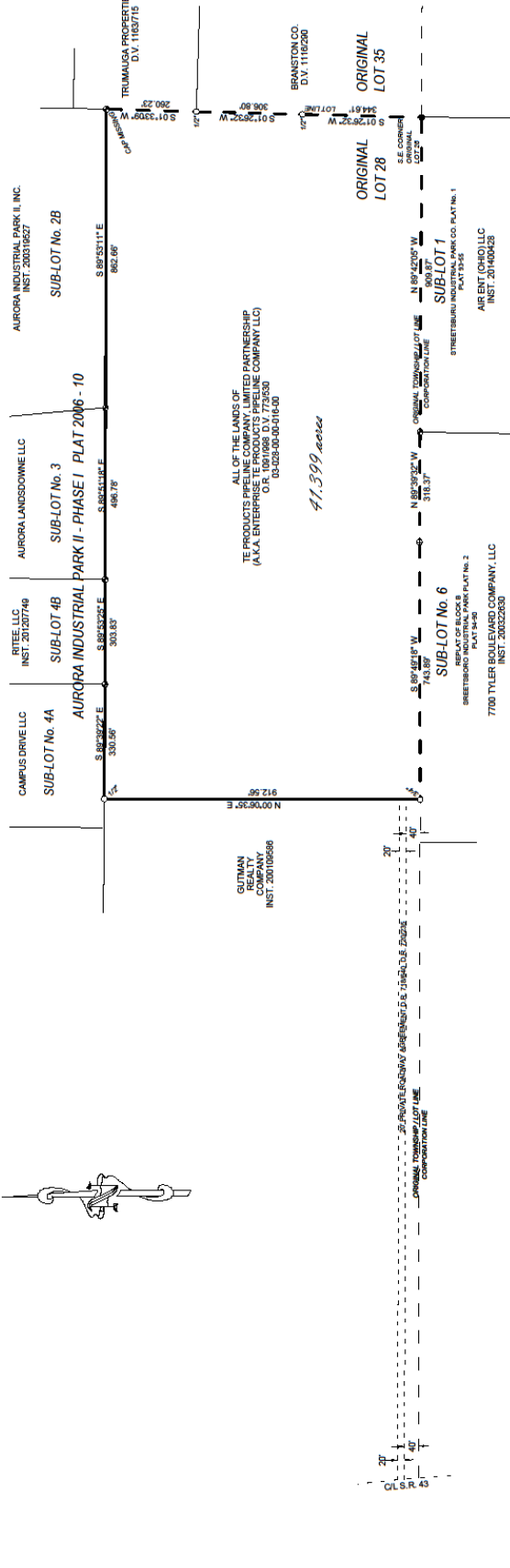
Aurora, Ohio
Access from SR 43

NEW PRICE!
Motivated Seller
\$2,200,000



- Large Aurora Development Site
- 41.5 Acres (Approx 1,993 ft x 912 ft)
- Zoned I-1 Manufacturing, Processing, Wholesale
- PPN 03-028-00-00-016-000





41,599 acres

**ENTERPRISE TE PRODUCTS
PIPELINE COMPANY LLC**

BOUNDARY RETRACEMENT SURVEY
ORIGINAL LOT 28, AURORA TOWNSHIP
PORTAGE COUNTY, OHIO
DRAWN BY: R.S.J. DATE: APRIL 14, 2014 SCALE: 1" = 200'
CHECKED BY: R.R.B. SHEET 1 OF 1 APPROVED BY:
AMERICAN PRECISION SURVEYING
3500 W. WARSAW AVE.
WARSAW, OHIO 43884

GENERAL NOTES
DATUM - HORIZONTAL - OHIO STATE PLANE, NORTH ZONE, NAD 83
VERTICAL - NAVD88
NORTH BASED ON GPS OBSERVATIONS
OHIO STATE PLANE COORDINATE SYSTEM
NORTH ZONE, GRID TO GROUND
DEED REFERENCES
INST. 2012/0749, D.V. 1162290
INST. 2013/0749, INST. 2003/630
INST. 2014/00428, PLAT 2006-10, PLAT 93-55, PLAT 94-80

R. SCOTT JOHNSON
REGISTERED PROFESSIONAL SURVEYOR
No. 6781

LEGEND
● = SET 5/8" X 30" REBAR WITH PLASTIC CAP
⊕ = RECOVERED 5/8" REBAR WITH PLASTIC CAP
⊖ = RECOVERED 5/8" REBAR (POINTED)
○ = RECOVERED PIPE (I.D. SIZE AS SHOWN)

R. Scott Johnson
R. SCOTT JOHNSON, R.P.S., S.T.



CONTACT: Christopher Smythe PHONE: 216-241-0200 EMAIL: csmythe@smytheprop.com