

FOR LEASE / OFFICE AND MEDICAL SPACE

# 347 ELIZABETH AVENUE

Somerset, NJ 08873



## PROPERTY INFORMATION

PROPERTY SIZE	40,374 SF ON 3.5 ACRES
FLOOR/AREA	ENTIRE 1 <sup>ST</sup> FLOOR: 20,187 SF <ul style="list-style-type: none"><li>• Suite 100 – 10,000 SF</li><li>• Suite 101 – 5,000 SF</li><li>• Suite 103 – 2,000 SF</li><li>• Suite 105 – 3,000 SF</li></ul>
	ENTIRE 2 <sup>ND</sup> FLOOR: 20,187 SF
NUMBER OF FLOORS	2
RENTAL	\$16.75 PSF PLUS UTILITIES AND JANITORIAL
PARKING	126 SPACES



## CONTACT US

Phone : 732-906-7806 ext-3999

Email : info@pomspace.com

[www.pomspace.com](http://www.pomspace.com)

**pomspace**  
Lease & Rental

# FOR LEASE 347 ELIZABETH AVENUE

Somerset, NJ 08873

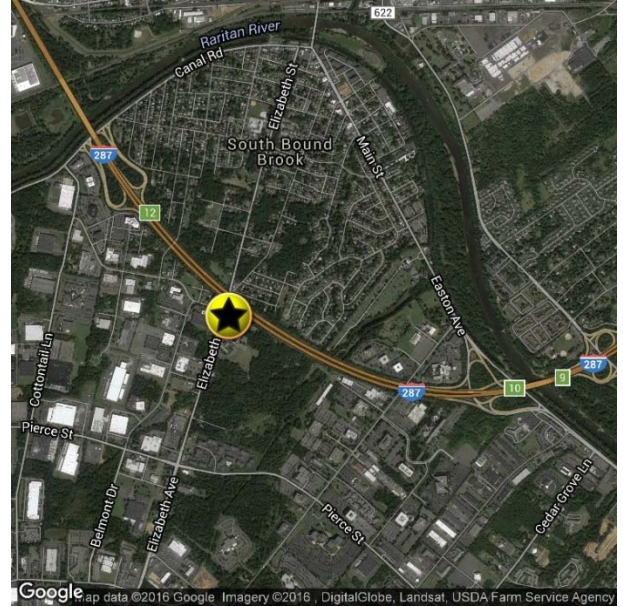


## FEATURES

- Financially strong, hands-on ownership
- Highway signage opportunity
- Easy access to Exits 10 and 12 off of I-287
- Energy efficient electrical systems throughout the building
- Roof replaced in 2012
- Building expansion opportunities

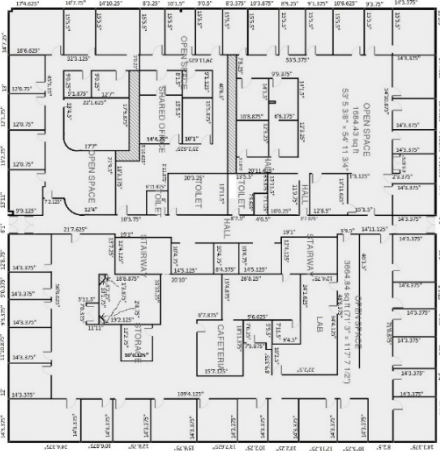


## LOCATION MAP



## FLOOR PLANS

### FIRST FLOOR



### SECOND FLOOR



## CONTACT US

Phone : 732-906-7806 ext-3999  
Email : info@pomspace.com

[www.pomspace.com](http://www.pomspace.com)

**pomspace**  
Lease & Rental