

FOR SALE

15,346 SQ. FT. AVAILABLE



VIEW
INSIDE



332-338 N. MAIN STREET | MILFORD, MI

For more information, contact:

MARVIN PETROUS

(248) 359 0647

mpetrous@signatureassociates.com

JIM MONTGOMERY

(248) 359 0614

jmontgomery@signatureassociates.com



**SIGNATURE
ASSOCIATES**

KNOW SIGNATURE | KNOW RESULTS

PROPERTY OVERVIEW

- 15,346 square foot prime upscale location in Downtown Milford
- Private parking lot and dual entrances on Main Street and Union Street
- Located on 0.9 acres
- Excellent opportunity for renovation, mixed-use development, multi-family, office, or professional repurpose
- Zoned B-2
- Zoning district allows purchaser to optimize the density and usage of building and land





332-338 N. MAIN STREET // 15,346 SQ. FT.

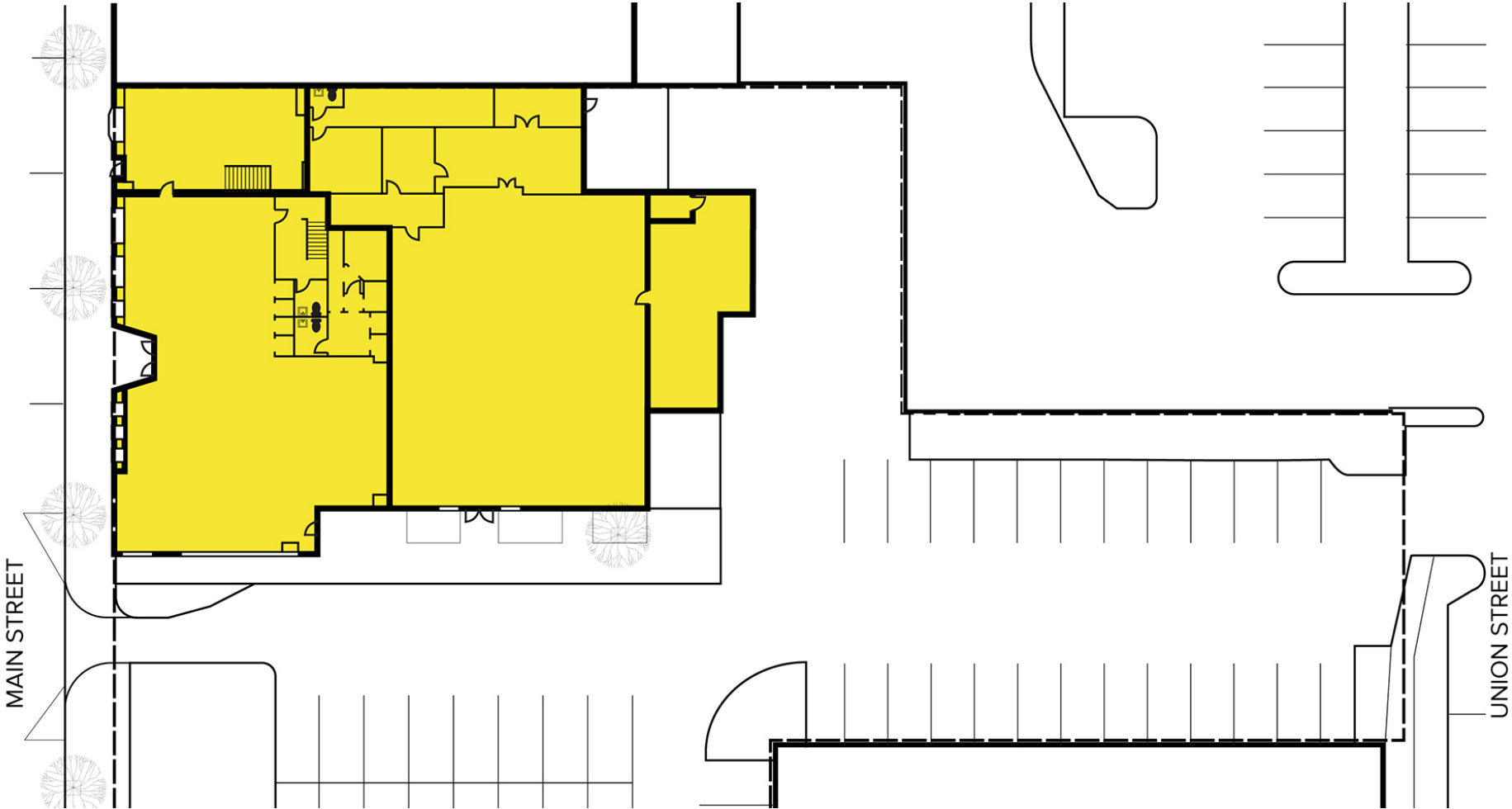




332-338 N. MAIN STREET // 15,346 SQ. FT.

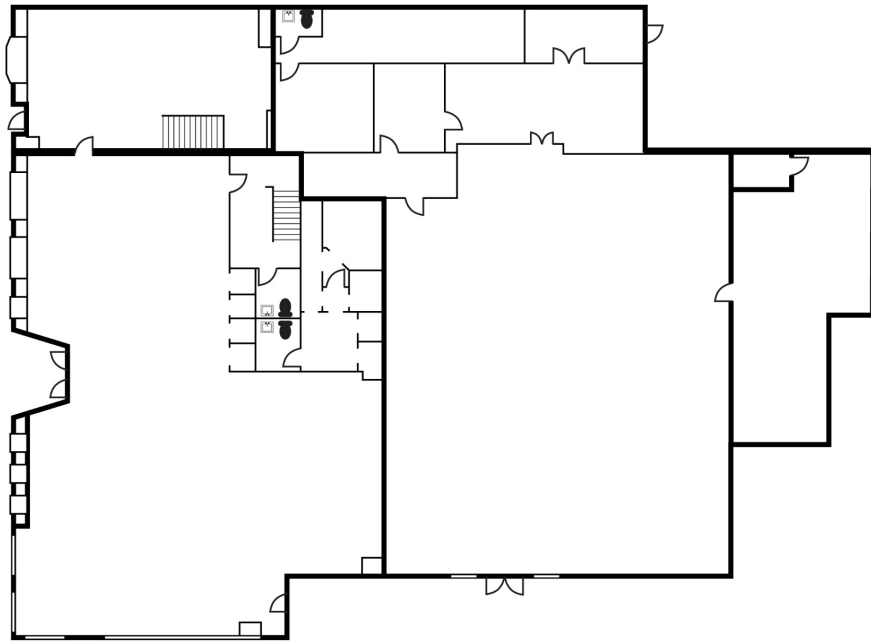


PROPERTY SITE PLAN

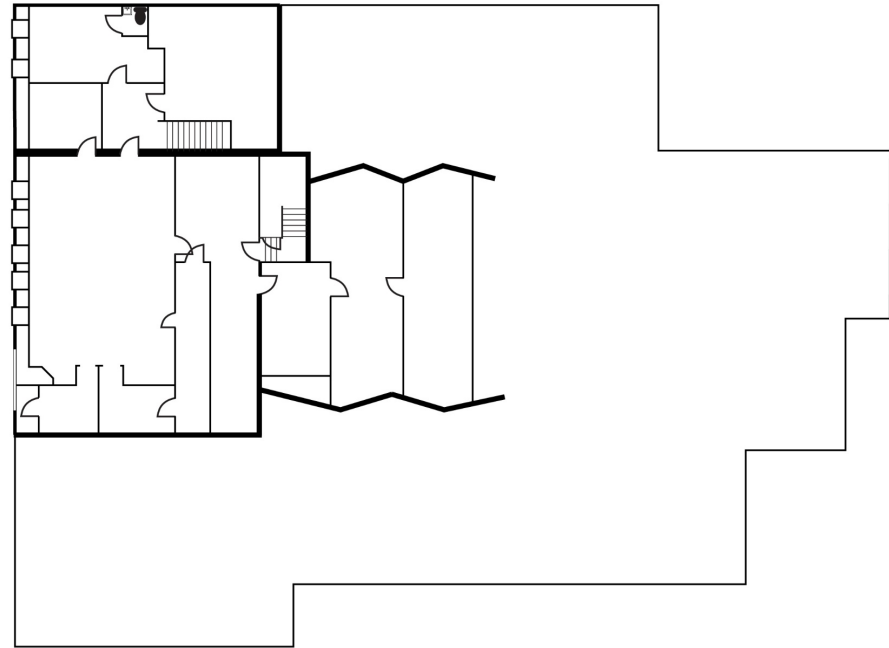


PROPERTY FLOOR PLANS

FIRST FLOOR



SECOND FLOOR



PRIME DOWNTOWN LOCATION

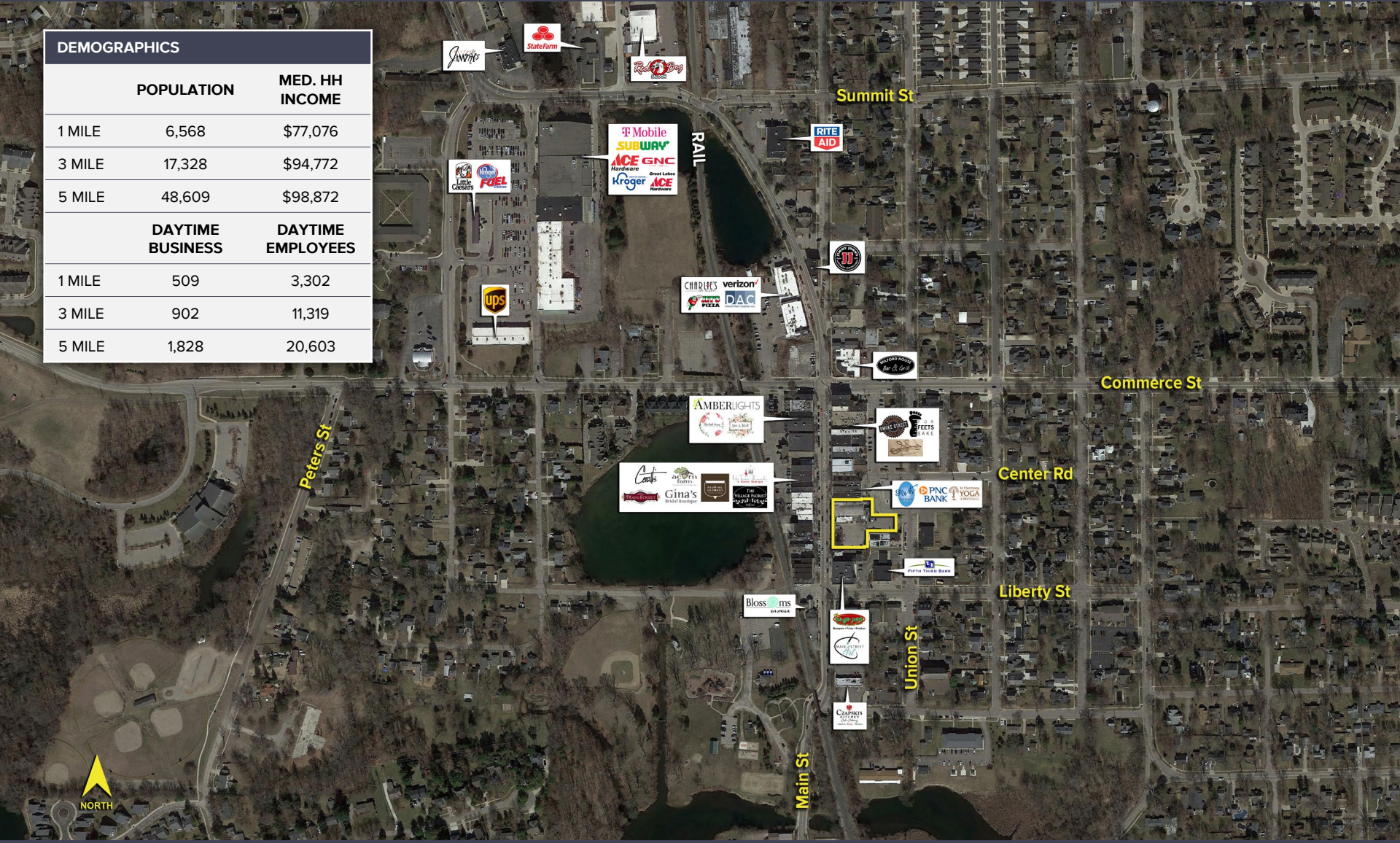
TRAFFIC COUNTS (2019)

19,252	N. Main N. of Commerce (2-Way)
13,142	N. Main S. of Commerce (2-Way)
8,618	Commerce E. of N. Main (2-Way)
4,968	Commerce W. of N. Main (2-Way)



SURROUNDING RETAIL

DEMOGRAPHICS		
	POPULATION	MED. HH INCOME
1 MILE	6,568	\$77,076
3 MILE	17,328	\$94,772
5 MILE	48,609	\$98,872
	DAYTIME BUSINESS	DAYTIME EMPLOYEES
1 MILE	509	3,302
3 MILE	902	11,319
5 MILE	1,828	20,603



For more information, contact:

MARVIN PETROUS

(248) 359 0647

mpetrous@signatureassociates.com

JIM MONTGOMERY

(248) 359 0614

jmontgomery@signatureassociates.com

SIGNATURE ASSOCIATES

One Towne Square, Suite 1200
Southfield, Michigan 48076
(248) 948 9000

www.signatureassociates.com



**SIGNATURE
ASSOCIATES**

KNOW SIGNATURE | KNOW RESULTS