



LAND FOR SALE - PRICE REDUCED

VACANT LAND - INDUSTRIAL/COMMERCIAL | 4601 W KEARNEY ST, SPRINGFIELD, MO 65803

- One Lot - 16.99 Acres zoned IC and HM
- Located near the Springfield-Branson National Airport
- Priced at \$380,000.00

EST. 1909

2225 S. Blackman Road
Springfield, MO 65809
417.881.0600

Robert Murray, Jr., SIOR
417.881.0600
bob@rbmurray.com

rbmurray.com

R.B. | MURRAY COMPANY
SINCE 1909
COMMERCIAL & INDUSTRIAL REAL ESTATE

Executive Summary



PROPERTY OVERVIEW

Industrial land, on the north side of Kearney Street at Airport Commerce Avenue.

PROPERTY HIGHLIGHTS

- 16.99 acres, with 11.99 useable; the front 6.24 acres zoned IC, the rear 10.75 acres zoned HM
- All utilities
- Enterprise Zone: 10-year abatement on improvements
- Located close to Interstate 44 and West By-Pass with easy access to Joplin, Branson and all of SW Missouri
- Real Estate Taxes: \$2,820 (2019)

PROPERTY SUMMARY

Sale Price:	\$380,000
Lot Size:	16.99 Acres
APN #:	1306400045
Zoning:	IC, HM
Market:	NW Springfield
Cross Streets:	Airport Commerce Avenue



The information listed above has been obtained from sources we believe to be reliable; however, we accept no responsibility for its accuracy.

VACANT LAND - INDUSTRIAL/COMMERCIAL
4601 W KEARNEY ST, SPRINGFIELD, MO 65803



Land Lots



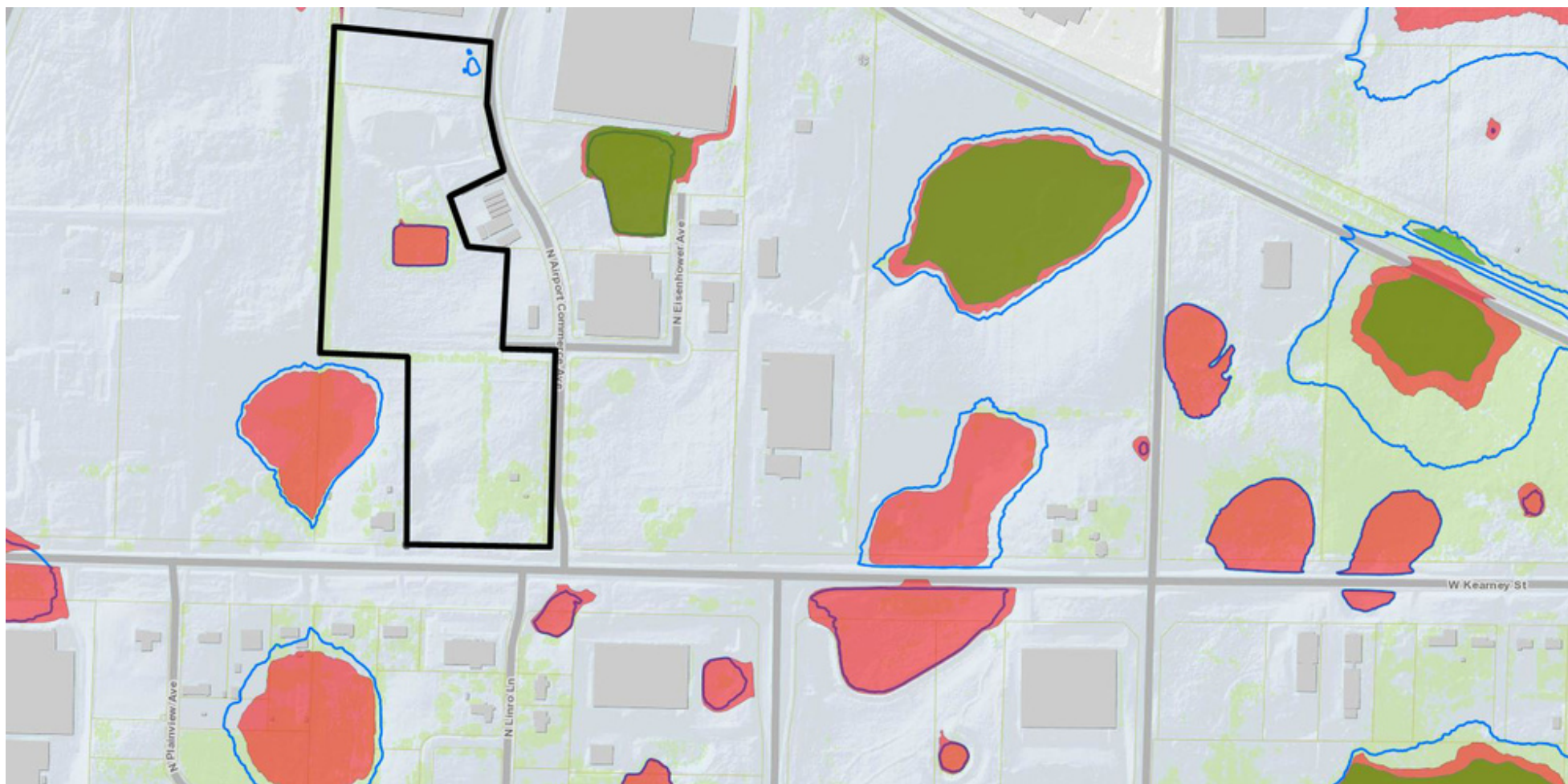
Lot #	Size (AC)	Price/Acre	Sale Price	Status	Description
1	16.99	\$22,366	\$380,000	Available	PRICE REDUCED...There is 11.99 acres useable. The front 6.24 acres is zoned IC - Industrial Commercial. The rear 10.75 acres is zoned HM - Heavy Manufacturing
2	7.54	\$55,702	\$420,000	Sold	This property is zoned IC - Industrial Commercial. SOLD

LAND FOR SALE

VACANT LAND - INDUSTRIAL/COMMERCIAL
4601 W KEARNEY ST, SPRINGFIELD, MO 65803



Sink Hole Map

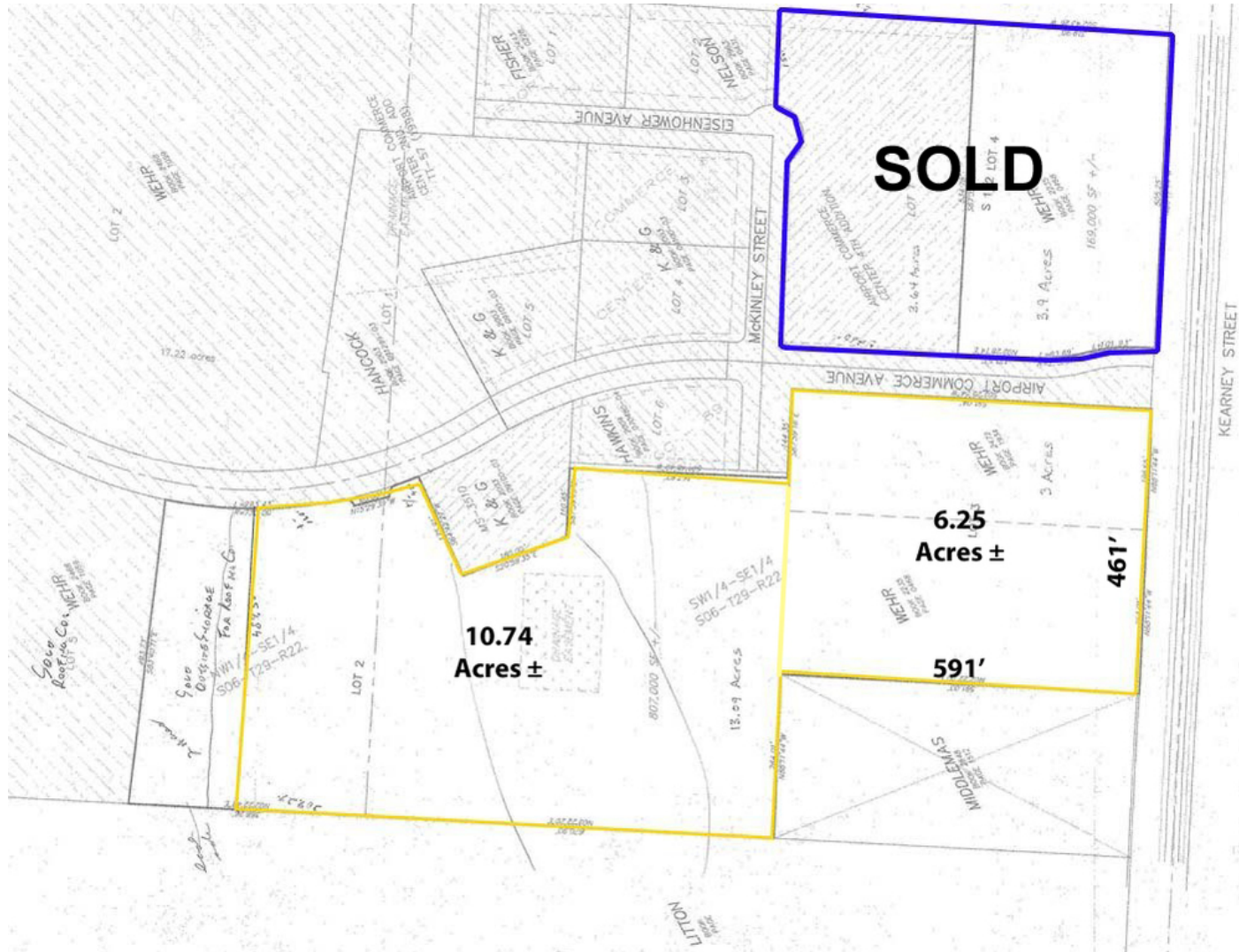


Robert Murray, Jr., SIOR | 417.881.0600 | bob@rbmurray.com
2225 S. Blackman Road | Springfield, MO 65809 | 417.881.0600

R.B. | MURRAY COMPANY
COMMERCIAL & INDUSTRIAL REAL ESTATE

VACANT LAND - INDUSTRIAL/COMMERCIAL
4601 W KEARNEY ST, SPRINGFIELD, MO 65803

Survey



LAND FOR SALE

VACANT LAND - INDUSTRIAL/COMMERCIAL

4601 W KEARNEY ST, SPRINGFIELD, MO 65803



Location Maps



Robert Murray, Jr., SIOR | 417.881.0600 | bob@rbmurray.com
2225 S. Blackman Road | Springfield, MO 65809 | 417.881.0600

R.B. | MURRAY COMPANY
COMMERCIAL & INDUSTRIAL REAL ESTATE

Advisor Bio & Contact 1

ROBERT MURRAY, JR., SIOR
Chief Financial Officer



2225 S. Blackman Road
Springfield, MO 65809

T 417.881.0600
C 417.848.0611
bob@rbmurray.com
MO #1999022566

Professional Background

For more than 50 years, Robert B. Murray, Jr. has been developing, selling and leasing commercial real estate. Offering a wealth of experience and insight, he is an active member of the Society of Industrial and Office Realtors (SIOR), and has worked extensively with some of the largest commercial and industrial real estate firms in the country.

A graduate of Drury College, Bob furthered his education by attending classes at the Master Appraisal Institute (MAI) and seminars through the International Council of Shopping Centers (ICSC). In 1984, he became a member of the Society of Industrial and Office Realtors (SIOR).

Bob is also active in the Springfield business community. He presently is a member of the Emeritus Board of Lester E. Cox Medical Center. In the past, Bob has been a long standing member of the board of directors at Lester E. Cox Medical Centers, where he has been president and chaired the Buildings and Grounds Committee. Bob was a member of the Commerce Bank Board for 26.5 years, and he has also been a director of Hickory Hills Country Club and was the president of the Business and Development Division of the Springfield Area Chamber of Commerce.

Memberships & Affiliations

Society of Industrial and Office Realtors (SIOR)

