

3-7 MAIDEN LANE



SPACE DETAILS

LOCATION

North block between Broadway and Nassau Street

APPROXIMATE SIZE

Space A

Ground Floor	750 SF
Basement	900 SF

Space B

Ground Floor	1,200 SF
--------------	----------

FRONTAGE

Space A 26 FT on Maiden Lane

Space B 20 FT on Maiden Lane

POSSESSION

Immediate

SITE STATUS

Space A Formerly Comic Chamelon

Space B Currently vacant

NEIGHBORS

Century 21, Urban Outfitters, Modell's Sporting Goods, Gap, Starbucks, Citibank and TD Bank

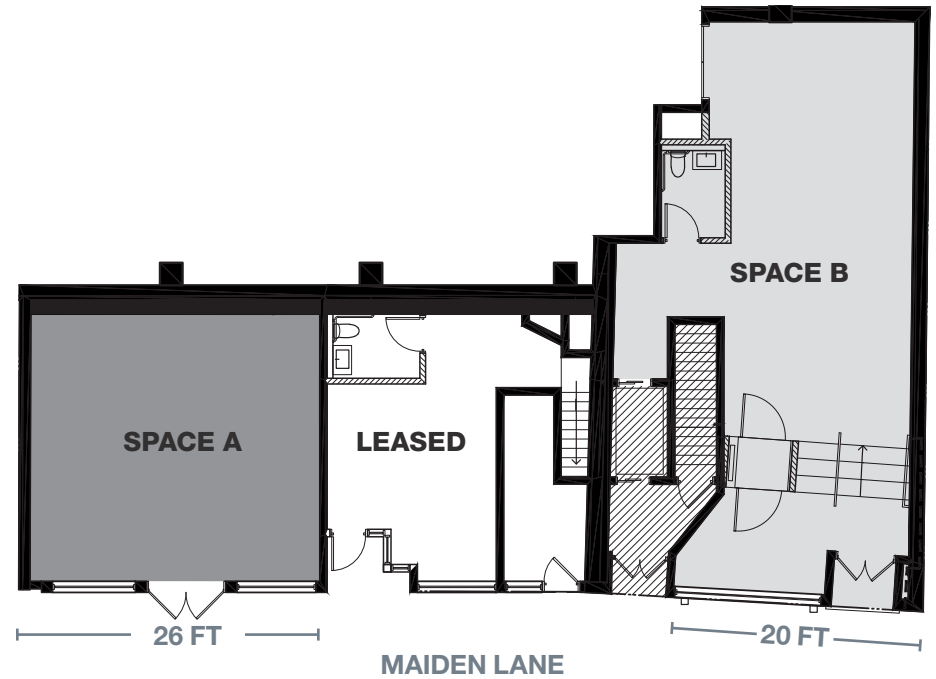
COMMENTS

One block to the Fulton Transit Center with an annual ridership of 26,838,473 with access to the  trains

SPACE A



GROUND FLOOR



SPACE B



AREA RETAIL



CONTACT EXCLUSIVE AGENTS

BARRY FISHBACH
212.331.0115
barry.fishbach@ngkf.com

ANDREW STERN
212.351.9353
andrew.stern@ngkf.com



NGKF.COM

© 2019 NEWMARK KNIGHT FRANK RETAIL. The information contained herein has been obtained from sources deemed reliable but has not been verified and no guarantee, warranty or representation, either express or implied, is made with respect to such information. Terms of sale or lease and availability are subject to change or withdrawal without notice.