

FOR LEASE

8404-8606 W. 13th St., Wichita, Kansas



Northwest Centre

This property has excellent density for retail or service tenants with approximately 73,000 cars per day traveling through 13th and Tyler. The parking lot and landscape improvements have been recently completed and coincide nicely with both Wesley Medical Centers which is located adjacent to Northwest Centre.

Estimated Average House Hold Income:

1 Mile \$78,879
3 Miles \$86,302
5 Miles \$79,647

Lease Rate: Negotiable
Lease Type: NNN at \$4.75

Space Available:
8606 W 13th
Suite A190: 975 SF

8526 W. 13th
Suite 150: 1,300 SF
Suite B160: 1,300 SF

8414 W 13th
Suite 110: 3,742 SF

8404 W 13th
Suite D130: 1,300 SF
Suite 190: 1,300 SF



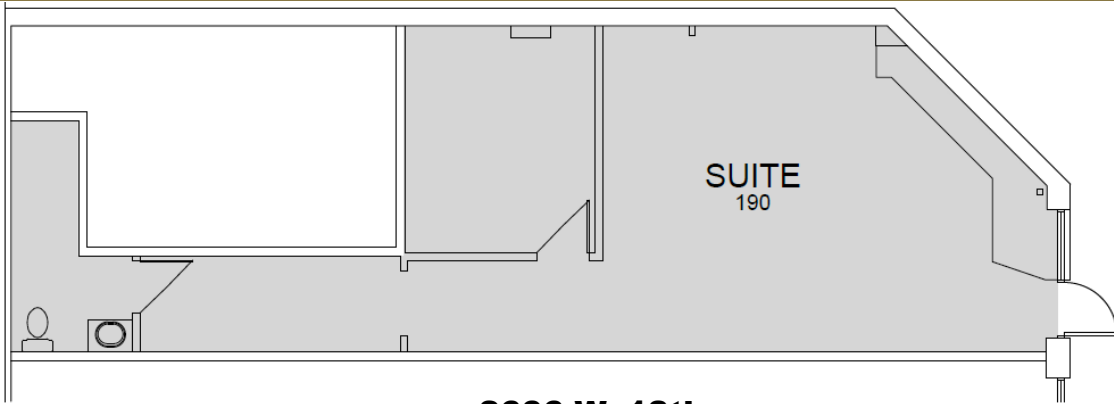
NATHAN GEORGE
nathan@occmgmt.com
T: 316-262-3331
C: 316-347-4137

8111 E. 32nd St. N., Suite 101
Wichita, KS 67226

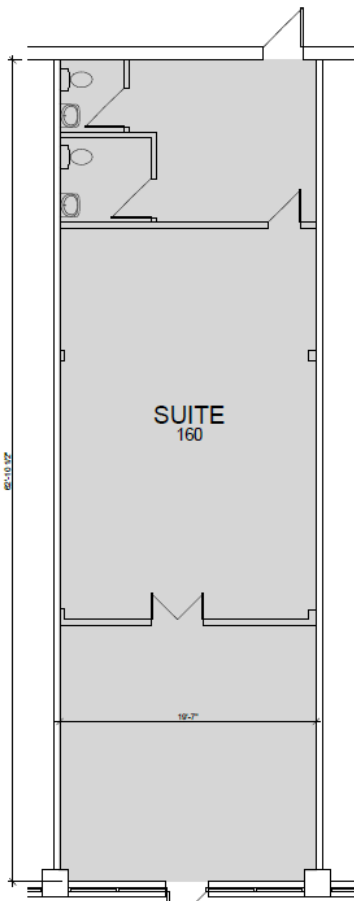
www.occmgmt.com
occidental@occmgmt.com

FLOOR PLANS

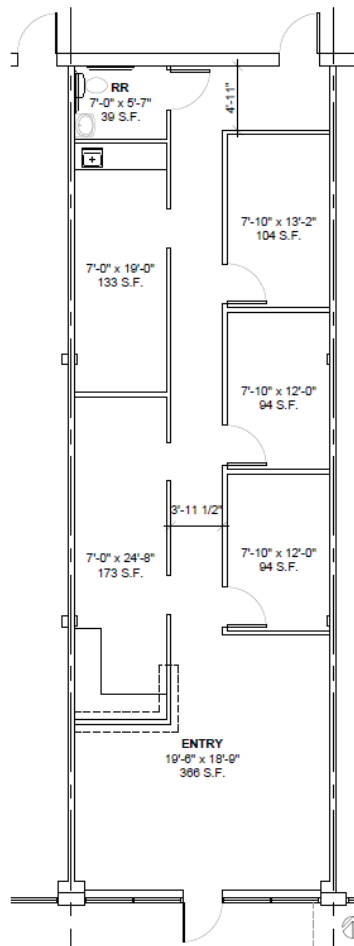
8404-8606 W. 13th St., Wichita, Kansas



**8606 W. 13th
SUITE 190 FLOOR PLAN**
3/16"=1'-0"
0 4'



**8526 W. 13th
SUITE 160 FLOOR PLAN**
3/16"=1'-0"
0 4'



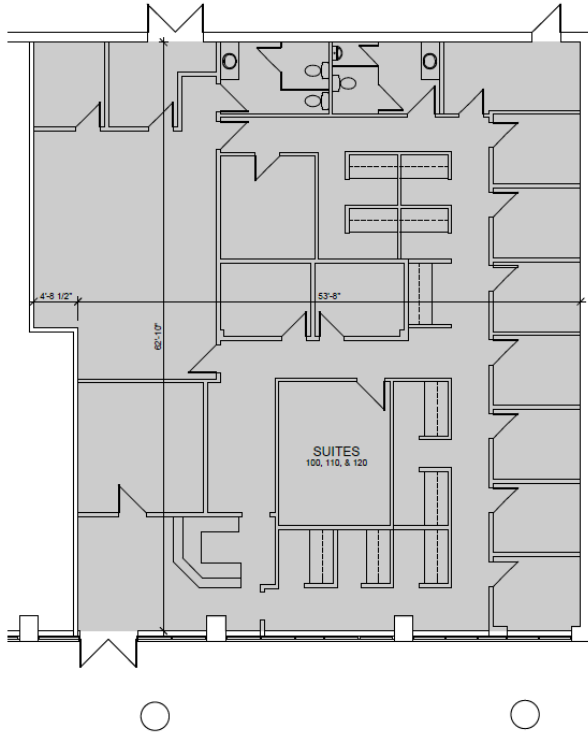
**8526 W. 13th
SUITE B-150 FLOOR PLAN**
1/8"=1'-0"
0 8' 1,296 SF (RENTABLE)
1,235 SF (USEABLE)



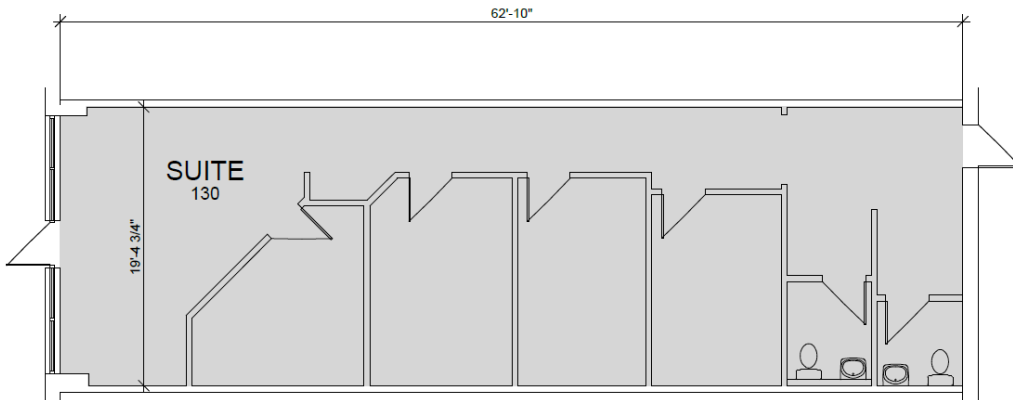
NATHAN GEORGE
nathan@occmgmt.com
T: 316-262-3331
C: 316-347-4137

FLOOR PLANS

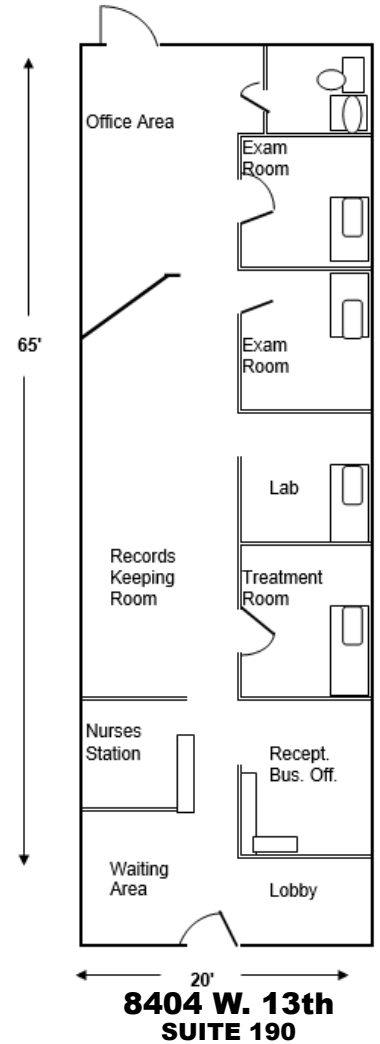
8404-8606 W. 13th St., Wichita, Kansas



**8414 W. 13th
SUITES 100, 110, & 120 FLOOR PLAN**
1/8"=1'-0"
0 6'



**8404 W. 13th
SUITE 130 FLOOR PLAN**
3/16"=1'-0"
0 4'



**8404 W. 13th
SUITE 190**



NATHAN GEORGE
nathan@occmgmt.com
T: 316-262-3331
C: 316-347-4137

AERIAL

8404-8606 W. 13th St., Wichita, Kansas



NATHAN GEORGE
nathan@occmgmt.com
T: 316-262-3331
C: 316-347-4137

8111 E. 32nd St. N., Suite 101
Wichita, KS 67226

www.occmgmt.com
occidental@occmgmt.com