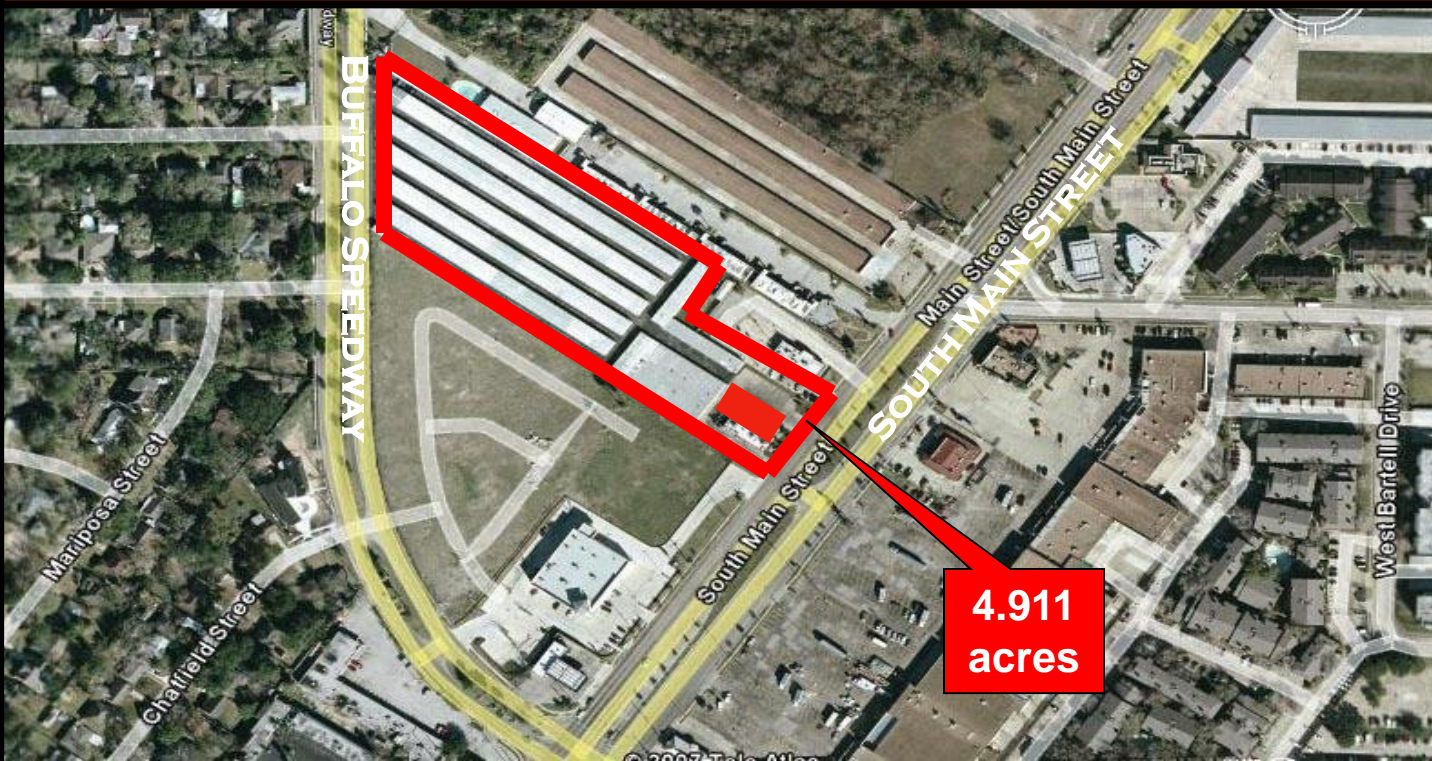


4.911 Acres of Land For Sale

Redevelopment Opportunity



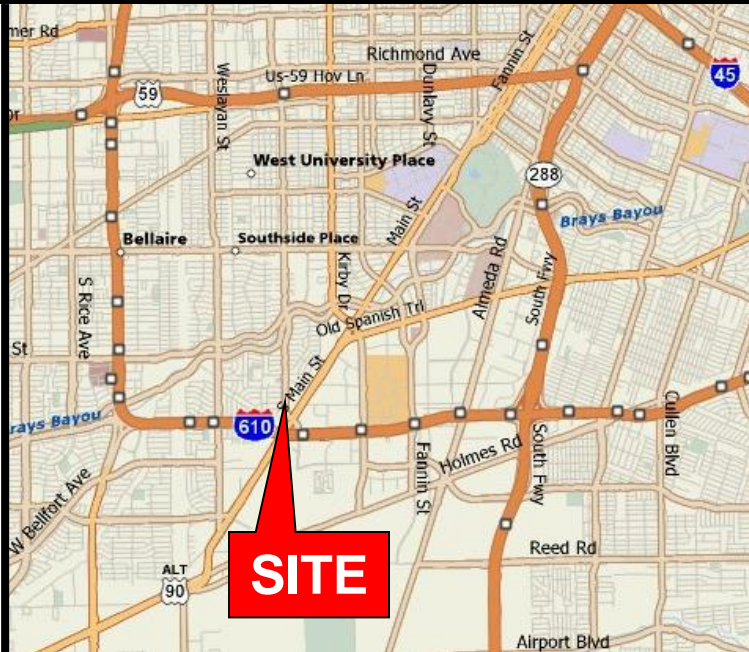
Sale Price: \$12,625,000 (\$59.00 PSF)

Location:

- 9419 Buffalo Speedway at S. Main
- Key Map 532P

Features:

- Direct access from Buffalo Speedway and South Main Street
- 2 miles from Medical Center
- ¼ mile from 610 Loop
- Great for multi-family or hotel/motel
- Current NOI from 900 unit mini-storage adequate to cover interest carry until redevelopment permits are issued



Capital Real Estate Commercial, Inc.

www.cretx.com

7720 Westview Drive • Houston, TX 77055

Phone (713) 681-1100 • Fax (713) 681-1114

Marc Deer (281) 808-0850

mdeer@credtexas.com

Hart Schleicher (713) 907-3570

hart@cretx.com

