

# NORTH CREEK BUILDING I

FOR LEASE

11714 North Creek Parkway North, Bothell

FOR LEASING INFORMATION CONTACT:

**MATT BOHNER**

Senior Associate  
matt.bohner@am.jll.com  
+1 425 974 4042

**BRENT JACKSON**

Senior Vice President  
brent.jackson@am.jll.com  
+1 425 974 4015





# NORTH CREEK BUILDING I



### BUILDING FEATURES:

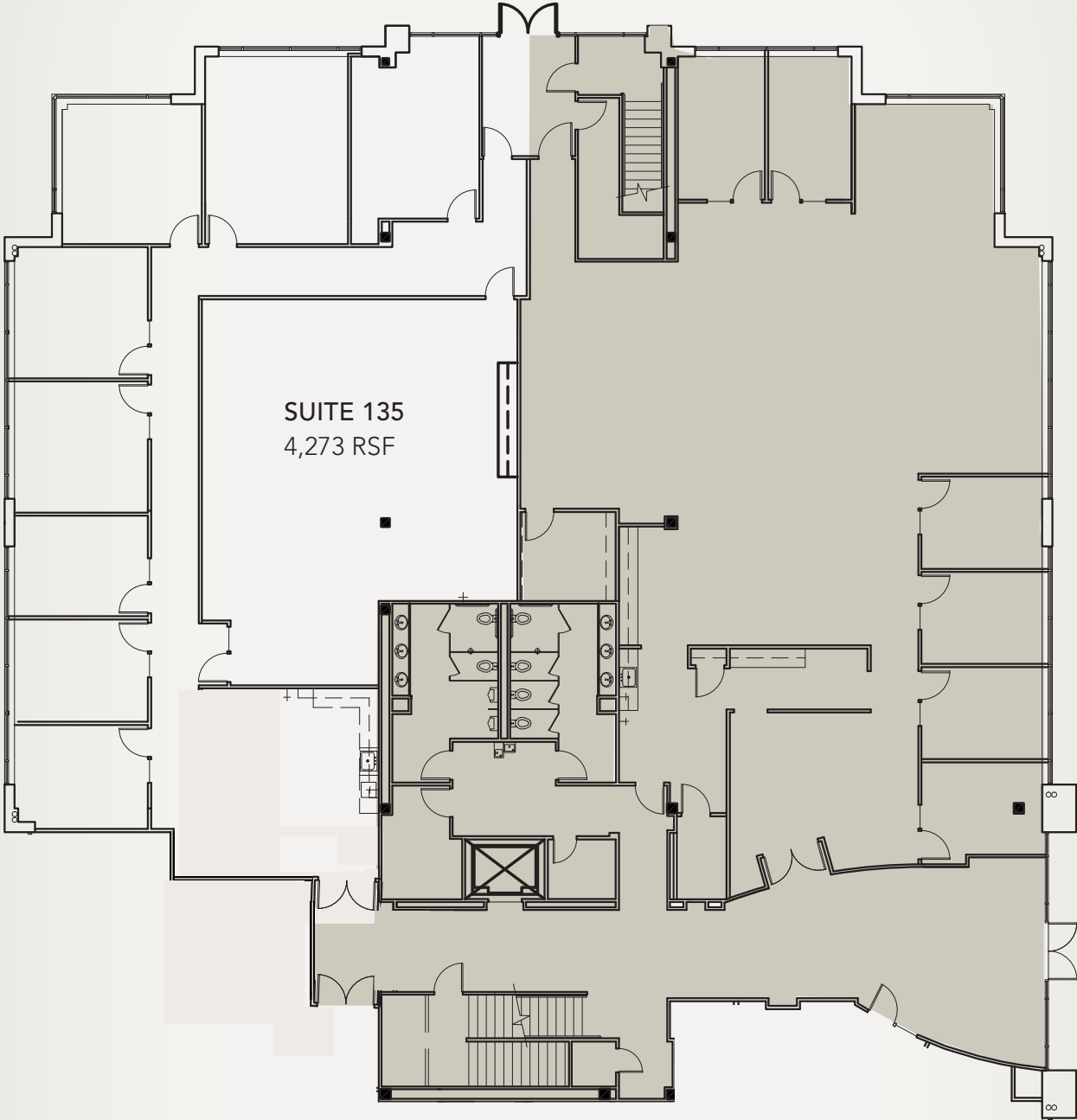
- » Two story 39,082 SF Class A office building
- » Immediate access to I-405 and Metro bus services
- » Near restaurants, retail, childcare and hotel accommodations
- » Excellent data connectivity with fiber
- » Located in a park-like campus setting surrounded by picturesque jogging and parcourse trails
- » Corporate neighbors include AT&T, T-Mobile, Google, State Farm and Puget Sound Energy
- » 3.5/1,000 parking ratio
- » Responsive on-site local management team

### SPACE AVAILABLE:

FLOOR	SUITE	RSF	COMMENTS
1	135	4,273 RSF	6 private offices, conference room; copy/supply room; large meeting room (can demo to create open work space)

# NORTH CREEK BUILDING I

FLOOR PLAN:







**NORTH CREEK BUILDING I**

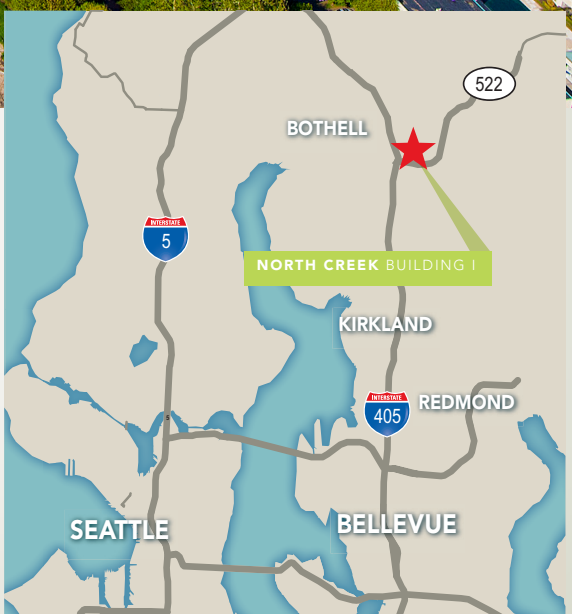
RETAIL AMENITIES

NORTH CREEK PARKWAY

COUNTRY INN AND SUITES



TO BELLEVUE ←  
TO EVERETT →



**MATT BOHNER**  
Senior Associate  
matt.bohner@am.jll.com  
+1 425 974 4042

**BRENT JACKSON**  
Senior Vice President  
brent.jackson@am.jll.com  
+1 425 974 4015

This statement with the information it contains is given with the understanding that all negotiations relating to the purchase, renting or leasing of the property described above shall be conducted through Jones Lang LaSalle IP, Inc. The above information, while not guaranteed, has been secured from sources we believe to be reliable.