

FOR LEASE  
GROUND FLOOR  
RETAIL SPACE

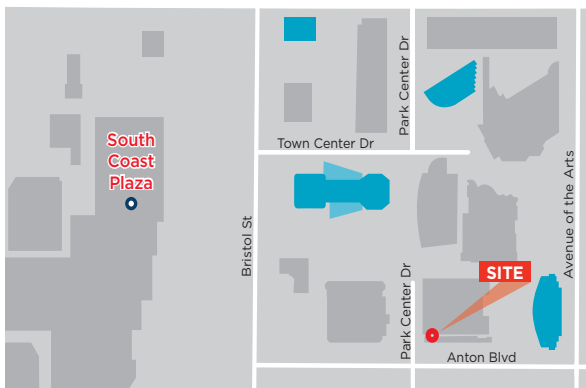


# Plaza Tower

650 ANTON BOULEVARD  
COSTA MESA | CALIFORNIA

## PROPERTY FEATURES

- Highly visible corner location
- Building designed by renowned architect César Pelli
- Convenient parking
- On-site property management and engineering team
- 24-hour security monitoring
- Convenient access to the 405 and 55 Freeways and the 73 Toll Road
- Easy access to Irvine and Newport Beach
- Minutes to John Wayne Airport



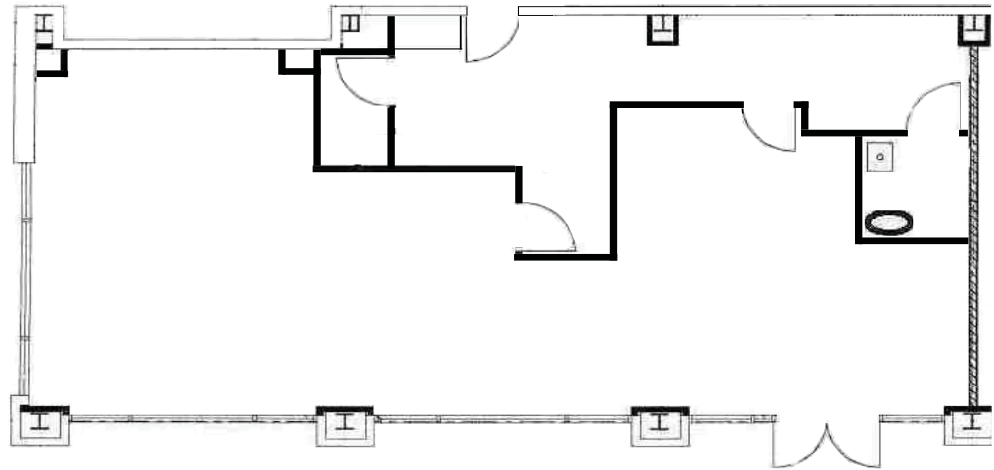
FOR LEASE  
GROUND FLOOR  
OFFICE SPACE

650 ANTON BOULEVARD  
COSTA MESA | CALIFORNIA

SUITE A

SQUARE FEET  
1,500

GROUND FLOOR



# Plaza Tower



## AMENITIES

- Adjacent to South Coast Plaza, the crown jewel of luxury shopping on the West Coast. Recognized internationally for its unparalleled collection of over 250 boutiques, award-winning restaurants and amenities including valet parking, currency exchange, foreign language assistance and personal stylist services
- Located within the Segerstrom Center for the Arts campus (which includes Segerstrom Hall, Founders Hall, Renée & Henry Segerstrom Concert Hall and Samueli Theater) as well as South Coast Repertory
- Steps away from the Center Club, the Westin, Wyndham, Hilton, and Marriot Hotels
- Within a 10 minute walk to over 70 restaurants ranging from fine dining to quick bites as well as banks/ATMs, hotels and fitness clubs
- The surrounding community offers fourteen residential apartment communities (providing over 5,000 apartment homes), lending to an urban "Live. Work. Walk" lifestyle

JENNIFER PELINO ASSOCIATE DIRECTOR | 949.930.4364 | [jennifer.pelino@cushwake.com](mailto:jennifer.pelino@cushwake.com)  
License #01901824

ROBERT LAMBERT EXECUTIVE DIRECTOR | 949.930.9212 | [robert.lambert@cushwake.com](mailto:robert.lambert@cushwake.com)  
License #01758074

RICK KAPLAN EXECUTIVE VICE CHAIRMAN | 949.955.7643 | [rnick.kaplan@cushwake.com](mailto:rnick.kaplan@cushwake.com)  
License #00863069



CUSHMAN & WAKEFIELD OF CALIFORNIA, INC.  
2020 Main Street, Suite 1000, Irvine, CA 92614  
Lic. #00616335  
[www.cushmanwakefield.com](http://www.cushmanwakefield.com)

The depiction in the included photograph of any person, entity, sign, logo or property, other than Cushman & Wakefield's (C&W) client and the property offered by C&W, is incidental only, and is not intended to connote any affiliation, connection, association, sponsorship or approval by or between that which is incidentally depicted and C&W or its client. This listing shall not be deemed an offer to lease, sublease or sell such property; and, in the event of any transaction for such property, no commission shall be earned by or payable to any cooperating broker except if otherwise provided pursuant to the express terms, rates and conditions of C&W's agreement with its principal, if, as and when such commission (if any) is actually received from such principal. (A copy of the rates and conditions referred to above with respect to this property is available upon request.)