

9,708 RSF

# SUBLEASE OPPORTUNITY

675 W. Foothill Blvd., Claremont, CA



## FEATURES & AMENITIES:

- Excellent condition with new LED lighting throughout
- Ample natural light
- Furniture can be made available
- 4/1000 parking ratio
- Multiple suite sizes available

## 675 W. Foothill Blvd., Claremont

Lease Rate: \$2.15/FSG

Suite 200	7,480 RSF
Suite 310	2,228 RSF

For leasing information,  
please contact:

SEAN KERN | 909.942.4691  
Senior Director  
sean.kern@cushwake.com  
Lic. #01377294

ARMEN GOURDIKIAN | 909.942.4643  
Senior Director  
armen.gourdikian@cushwake.com  
Lic. # 00944798



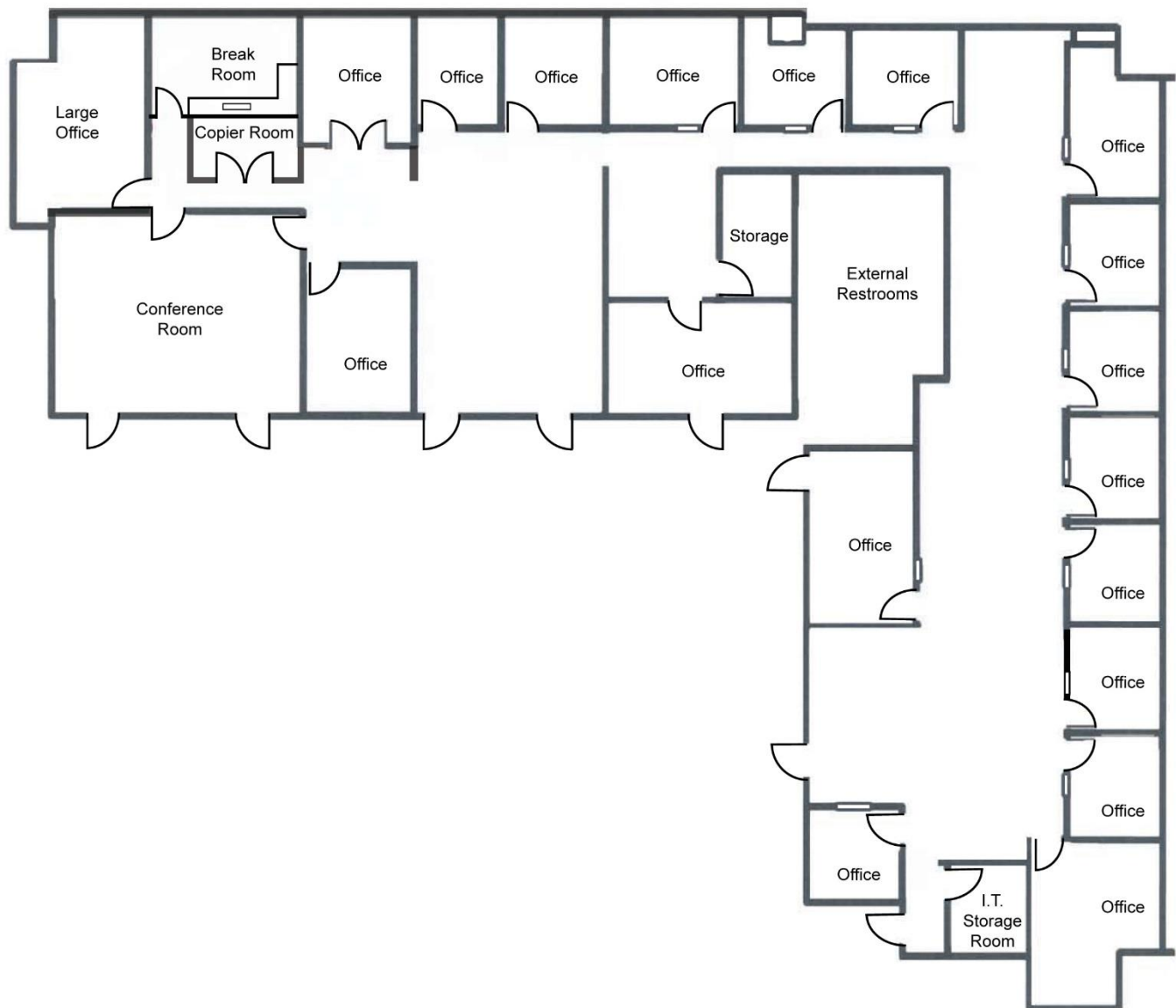
**CUSHMAN &  
WAKEFIELD**

# 675 W. Foothill Blvd., Claremont, CA

Suite 200

7,480 RSF

Lease expires 1/31/2021



For leasing information,  
please contact:

**SEAN KERN | 909.942.4691**  
Senior Director  
sean.kern@cushwake.com  
Lic. #01377294

**ARMEN GOURDIKIAN | 909.942.4643**  
Senior Director  
armen.gourdikian@cushwake.com  
Lic. # 00944798



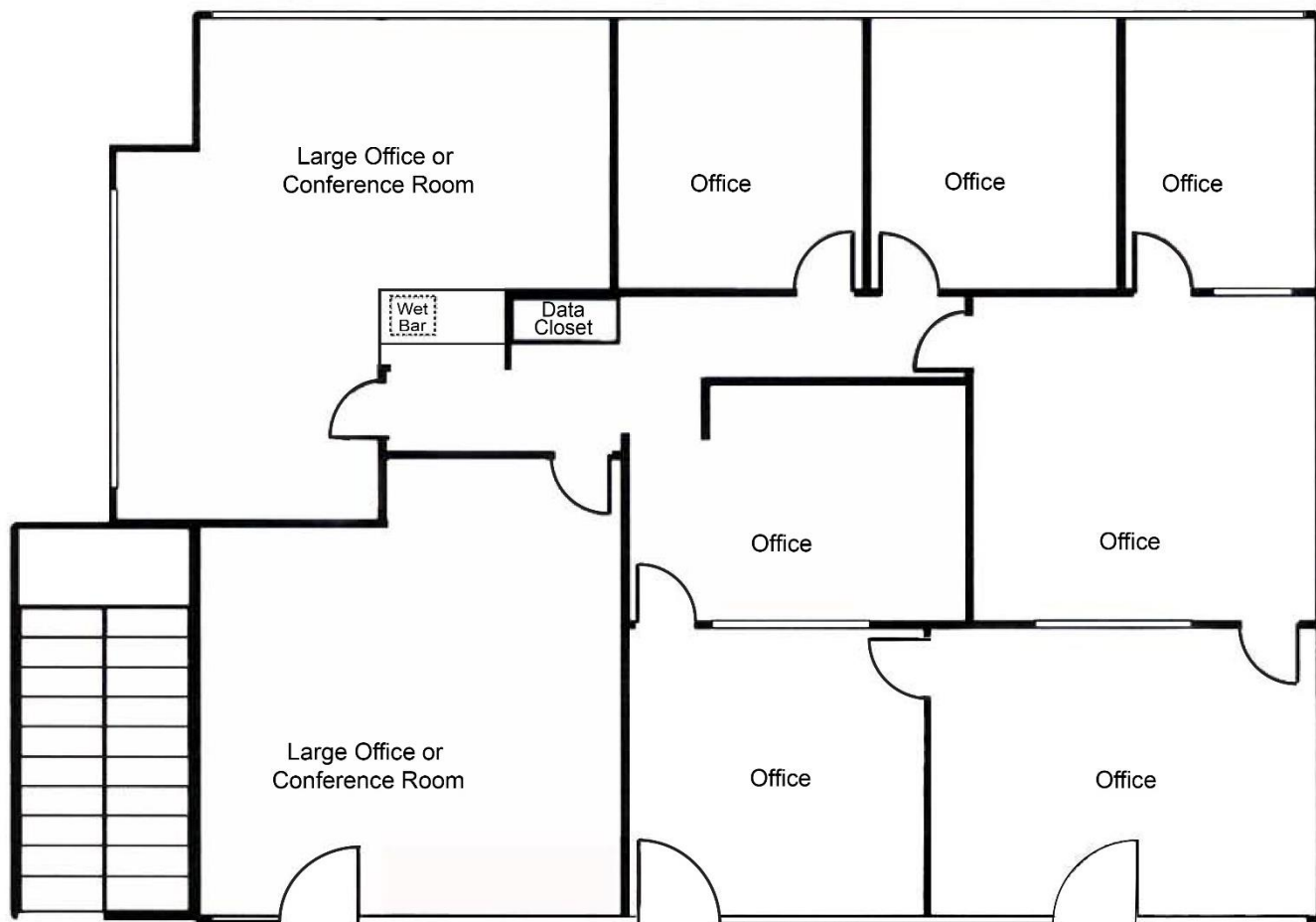
**CUSHMAN &  
WAKEFIELD**

# 675 W. Foothill Blvd., Claremont, CA

Suite 310

2,228 RSF

Lease expires 1/31/2021



For leasing information,  
please contact:

**SEAN KERN | 909.942.4691**  
Senior Director  
sean.kern@cushwake.com  
Lic. #01377294

**ARMEN GOURDIKIAN | 909.942.4643**  
Senior Director  
armen.gourdikian@cushwake.com  
Lic. # 00944798



**CUSHMAN &  
WAKEFIELD**