

Office Investment or User Building

2201 W Commodore Way
Seattle, WA

Approximately 3,700 SF of
building area

Approximately 3,600 SF of land

Zoned IG2 U/65

Built in 2003

First floor leased to two tenants
(taco truck additional
month-to-month lease)

Second floor is 1,800 SF,
occupied by Seller's company
(could stay for investment buyer,
or vacate for a user)

Fully air-conditioned

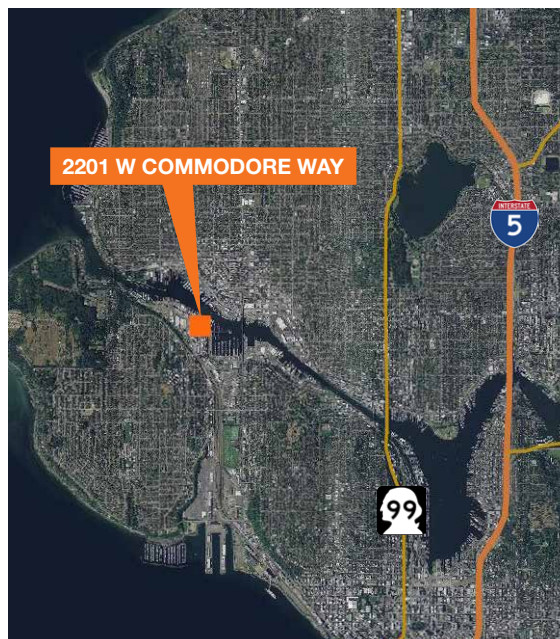
On-site parking

Corner location overlooking
Salmon Bay with views of
ship canal

\$1,295,000



Location



Contact

Jeff Loftus

206.248.7326

jloftus@kiddermathews.com

Brian Clapp

206.248.7316

bclapp@kiddermathews.com

Office Investment or User Building

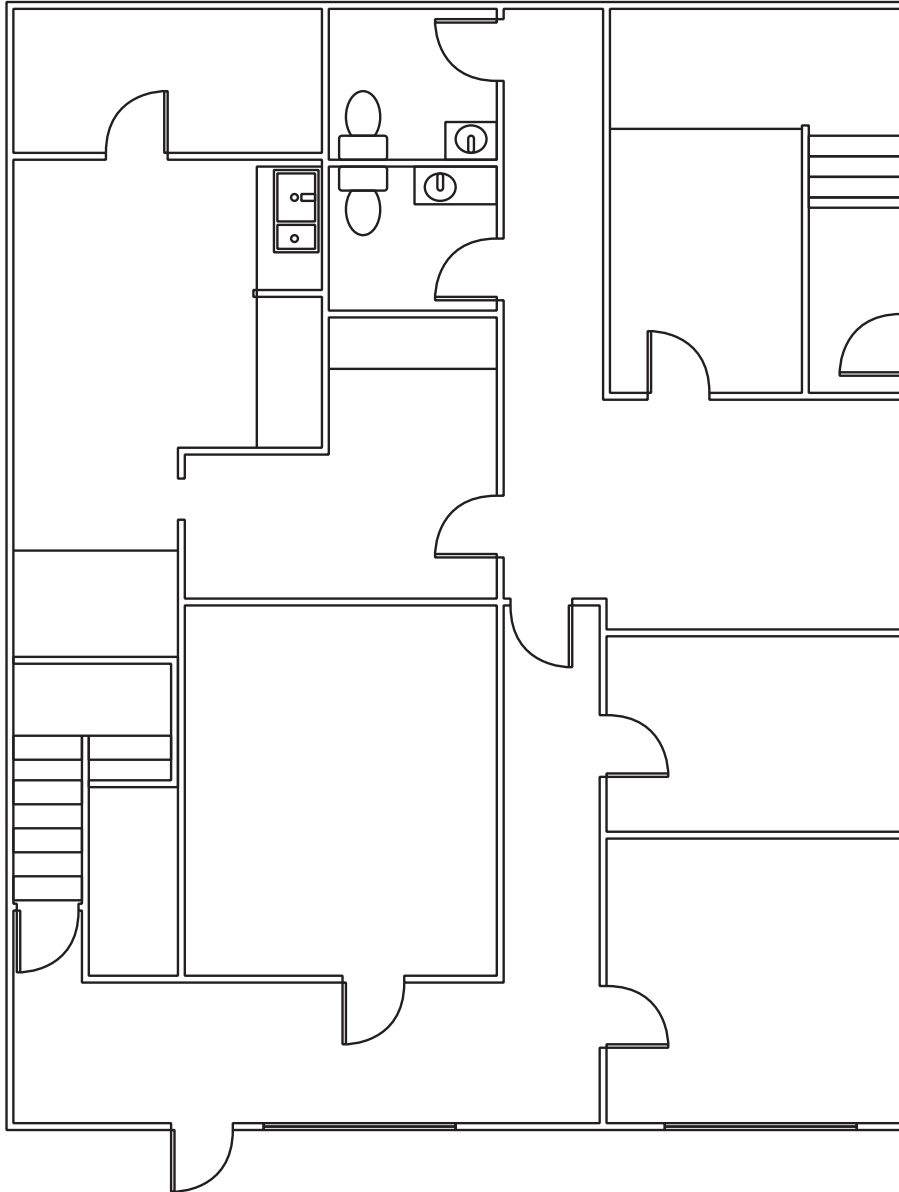


Contact

Jeff Loftus
206.248.7326
jloftus@kiddermathews.com

Brian Clapp
206.248.7316
bclapp@kiddermathews.com

First Floor Plan



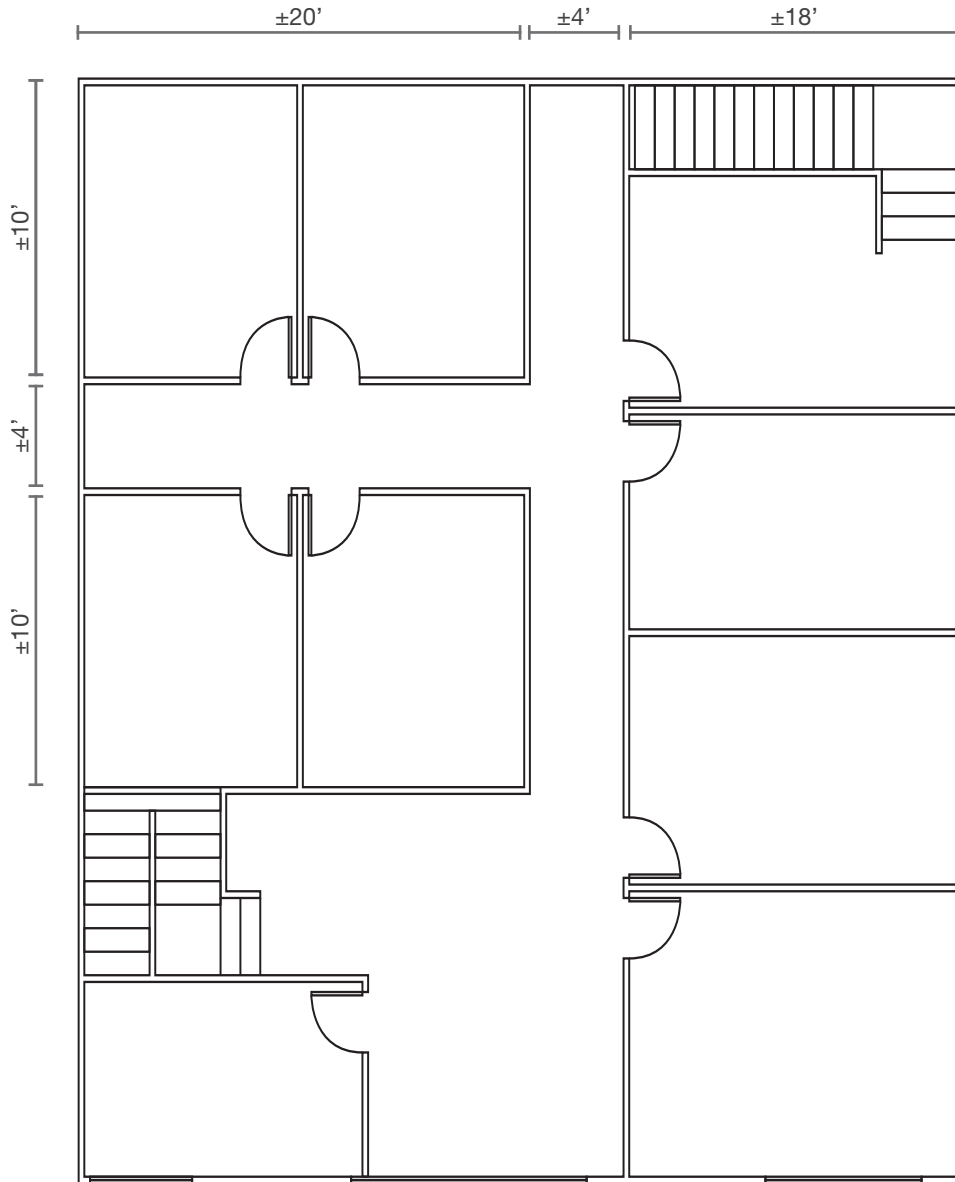
NOT TO SCALE

Contact

Jeff Loftus
206.248.7326
jloftus@kiddermathews.com

Brian Clapp
206.248.7316
bclapp@kiddermathews.com

Second Floor Plan



NOT TO SCALE

Contact

Jeff Loftus
206.248.7326
jloftus@kiddermathews.com

Brian Clapp
206.248.7316
bclapp@kiddermathews.com