



# ENTERPRISE TECHNOLOGY CENTRE

Scotts Valley, CA

# Enterprise Technology Centre

100 Enterprise Way, Scotts Valley, CA  
± 420,946 SF Multi-Building Office Campus

**Steven Sheldon**  
Principal  
831.459.6450  
ssheldon@sheldonwiseman.com  
Lic #01028650

**Jim Wiseman**  
Principal  
831.459.6440  
jwiseman@sheldonwiseman.com  
Lic #01104278



## Highlights

- One of the Highest Quality Office Properties on the West Coast
- World Class Corporate Campus Environment
- Designed by Renowned Architect Kevin Roche
- Divisible as low as ±1,277 SF - up to ±86,199 contiguous SF
- \$2.35 Full Service per Square Foot per Month
- On-Site Amenities
  - Fitness Center with Spa Services
  - Pool
  - Tennis Courts
  - Theater Quality Auditorium
  - Outdoor Amphitheater
  - Cafeteria / Restaurant
- Reverse Commute : Quick 15 Minute Drive from Los Gatos and the Silicon Valley
- 10 Minutes from Santa Cruz
- Abundant Glass and Natural Light in Tranquil Park-Like Setting with Dramatic Water Features
- Atriums, Courtyards, and Balconies
- Call to Tour



**Drew Arvay** | Managing Partner, Director  
P +1 408 436 3647  
drew.arvay@cushmanwakefield.com  
LIC #00511262





± 420,946 SF Multi-Building Office Campus



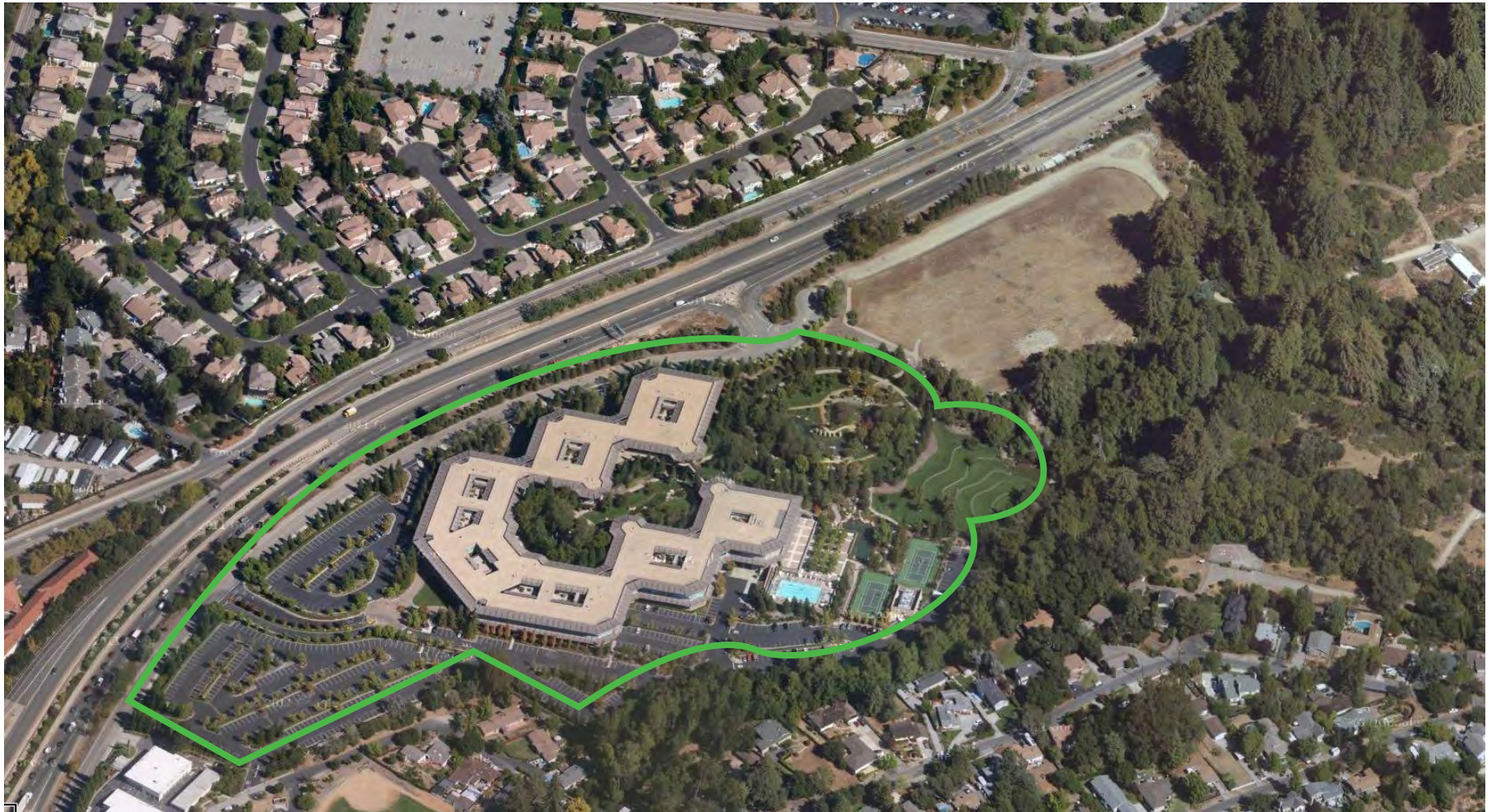


# Enterprise Technology Centre

100 Enterprise Way, Scotts Valley, CA  
± 420,946 SF Multi-Building Office Campus



## AERIAL

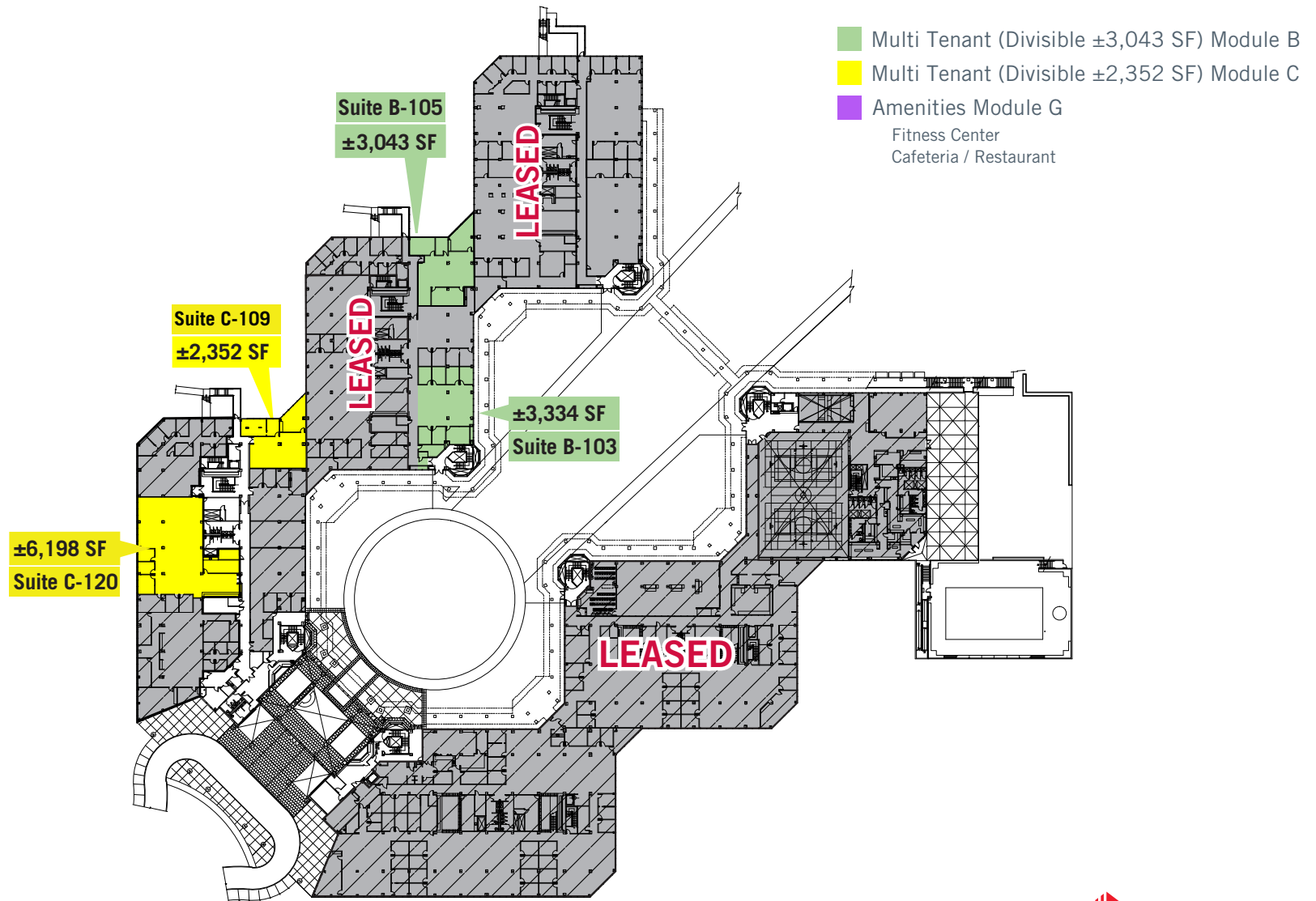


# Enterprise Technology Centre

100 Enterprise Way, Scotts Valley, CA  
± 420,946 SF Multi-Building Office Campus



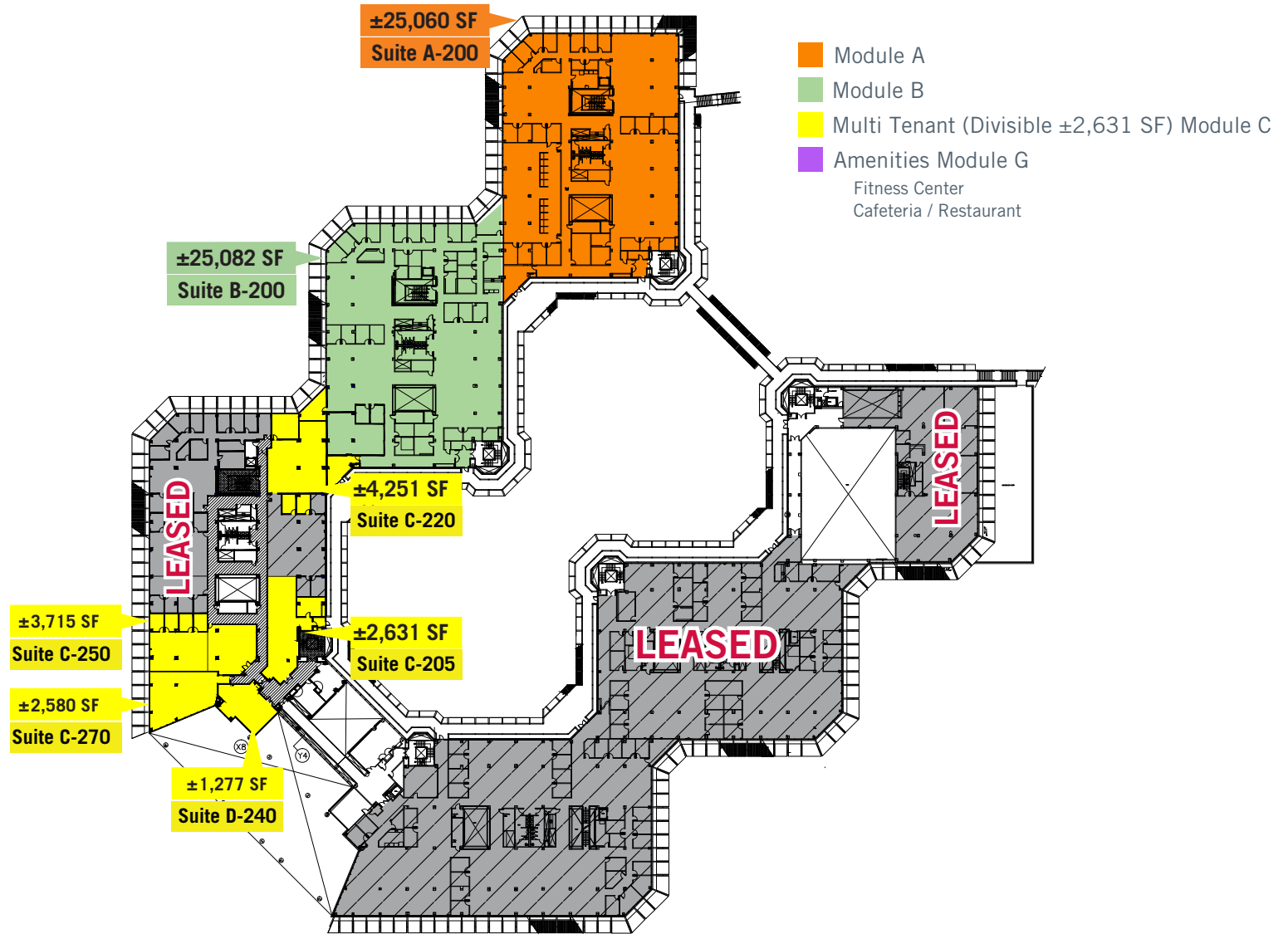
## First Floor



# Enterprise Technology Centre

100 Enterprise Way, Scotts Valley, CA  
± 420,946 SF Multi-Building Office Campus

## Second Floor



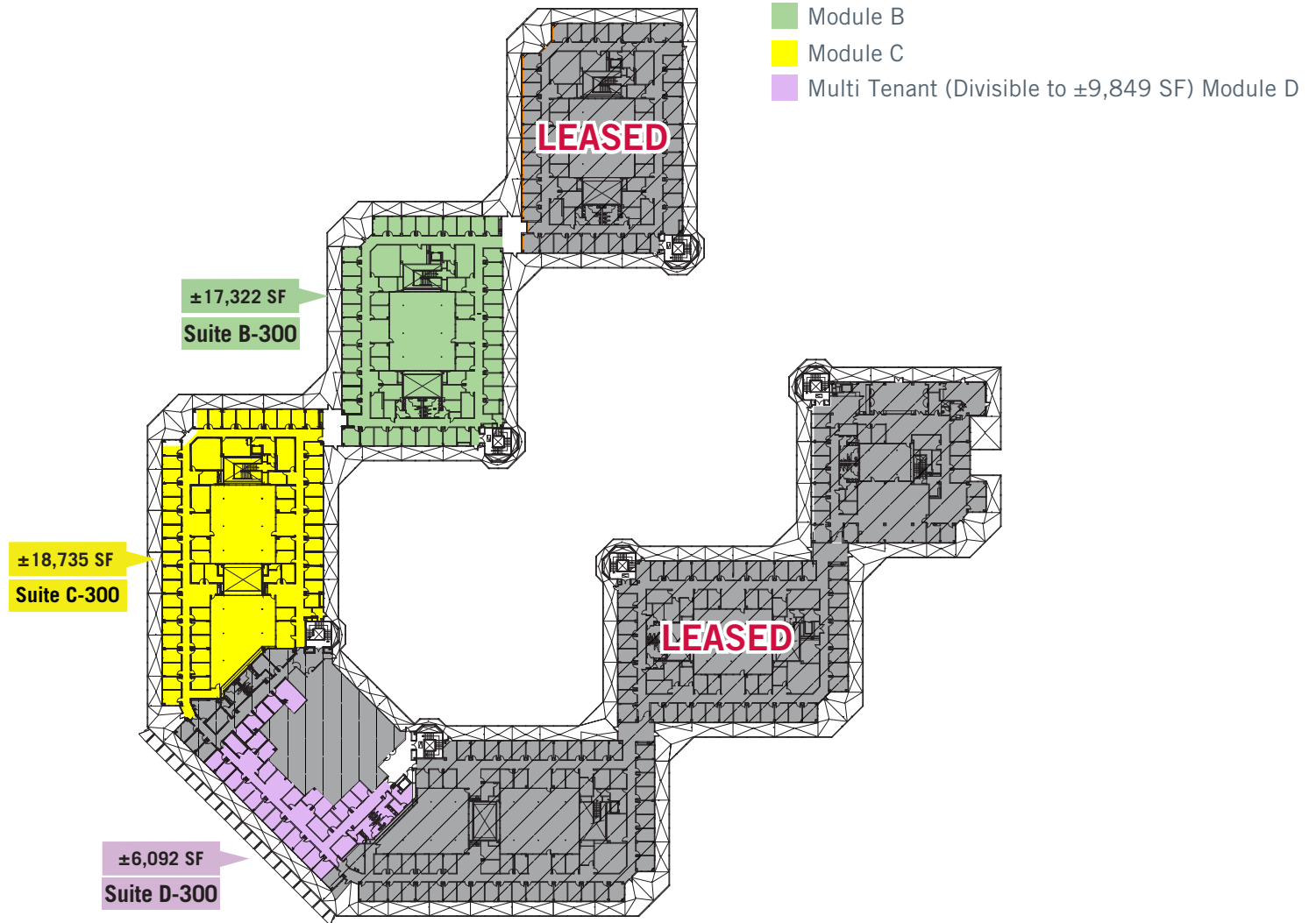


# Enterprise Technology Centre

100 Enterprise Way, Scotts Valley, CA  
± 420,946 SF Multi-Building Office Campus



## Third Floor



For more information, contact:



1200 Pacific Avenue, Suite 390  
Santa Cruz, CA 95060  
ph: 831.454.9400  
fx: 831.459.7988

[www.sheldonwiseman.com](http://www.sheldonwiseman.com)



300 Santana Row, Fifth Floor  
San Jose, California 95128  
P +1 408 615 3400  
F +1 408 615 3444

[cushmanwakefield.com](http://cushmanwakefield.com)

**Steven Sheldon**

Principal  
831.459.6450  
[ssheldon@sheldonwiseman.com](mailto:ssheldon@sheldonwiseman.com)  
Lic #01028650

**Jim Wiseman**

Principal  
831.459.6440  
[jwiseman@sheldonwiseman.com](mailto:jwiseman@sheldonwiseman.com)  
Lic #01104278

**Drew Arvay**

Managing Partner, Director  
P +1 408 436 3647  
[drew.arvay@cushwake.com](mailto:drew.arvay@cushwake.com)  
LIC #00511262

