

FOR LEASE | ±2,166 SF PROFESSIONAL OFFICE

2271 LAVA RIDGE CT, ROSEVILLE, CA 95661

EXCELLENT LOCATION OFF OF EUREKA ROAD, IN THE HEART OF ROSEVILLE'S BUSINESS DISTRICT, CLOSE TO MANY AMENITIES.



John Walston

Vice President

916.677.8128

jwalston@tricommercial.com

LIC: #01200364

FOR LEASE

ROSEVILLE, CA PROFESSIONAL OFFICE

Property Details

- ±2,166 RSF Available with 30 Days Notice
- Corner suite with 3 sides of glass
- Large corner executive office
- Breakroom
- Elevator serviced building
- Abundant parking



RATE: \$2.20/RSF; FULL SERVICE

John Walston

916.677.8128

jwalston@tricommercial.com

LIC: #01200364



www.tricommercial.com

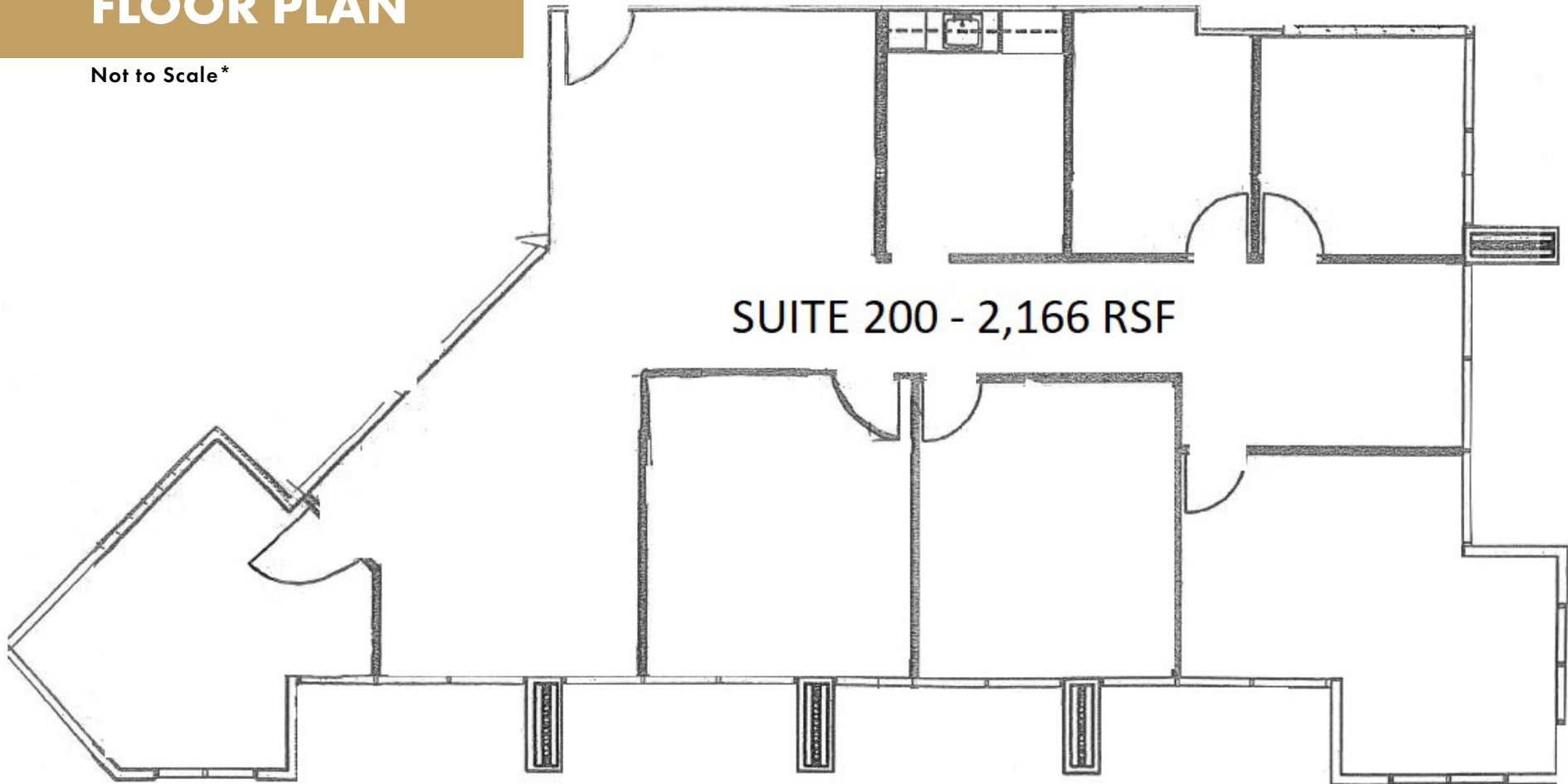
The information in this document was obtained from sources we deem reliable; however, no warranty or representation, expressed or implied, is made as to the accuracy of the information contained herein.

FOR LEASE

ROSEVILLE, CA
PROFESSIONAL OFFICE

FLOOR PLAN

Not to Scale*



John Walston

916.677.8128

jwalston@tricommercial.com

LIC: #01200364



www.tricommercial.com

The information in this document was obtained from sources we deem reliable; however, no warranty or representation, expressed or implied, is made as to the accuracy of the information contained herein.

FOR LEASE

ROSEVILLE, CA PROFESSIONAL OFFICE



John Walston

916.677.8128

jwalston@tricommercial.com

LIC: #01200364



www.tricommercial.com

The information in this document was obtained from sources we deem reliable; however, no warranty or representation, expressed or implied, is made as to the accuracy of the information contained herein.