

FOR SALE
±41.89 ACRES



Wise Ferry Road

Lexington, SC

807 Gervais Street, Suite 200
Columbia, South Carolina 29201
803.254.0100
www.naicolumbia.com

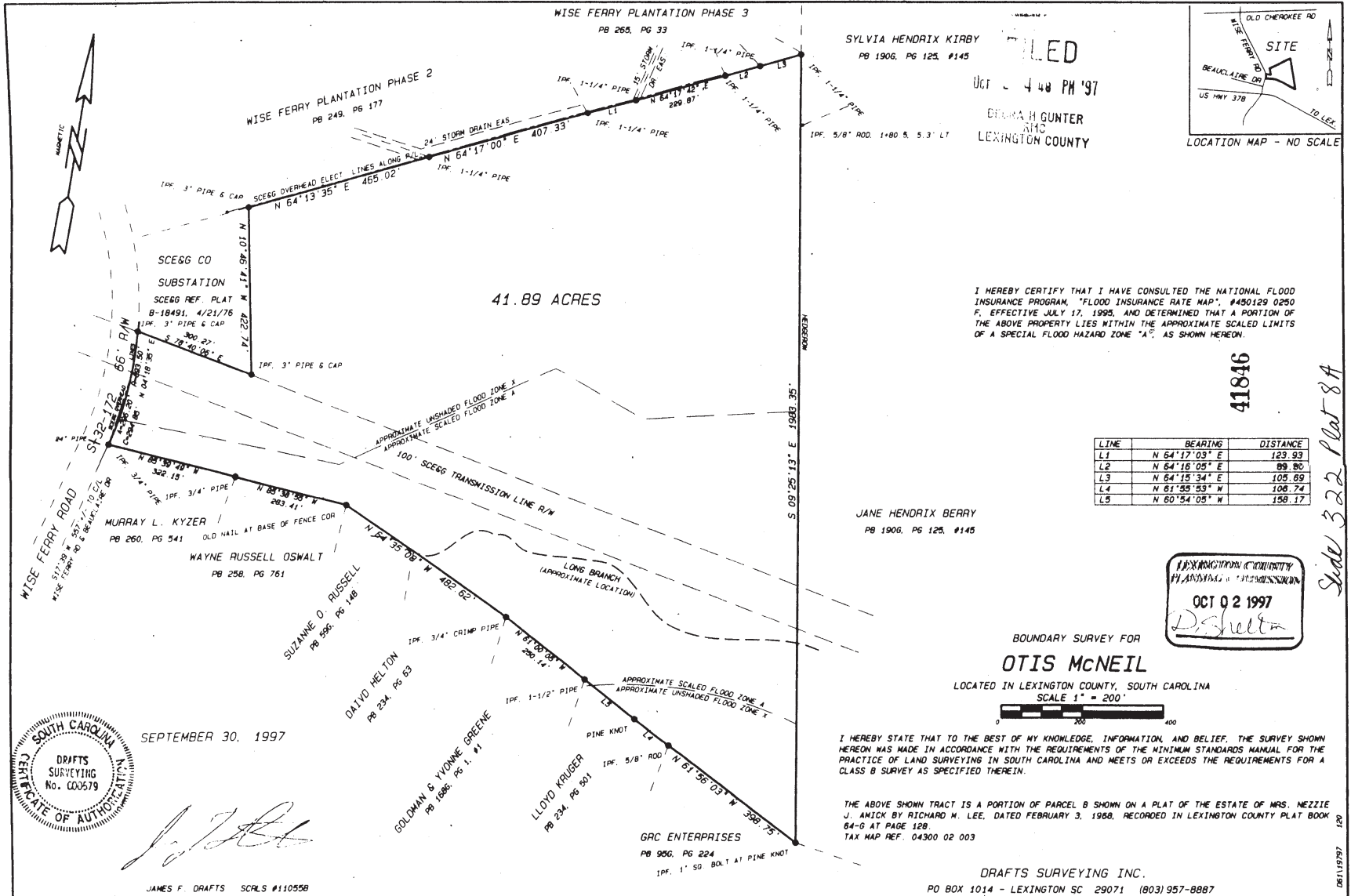
John Gregory, PE, CCIM
803.744.9896
jegregory@naicolumbia.com

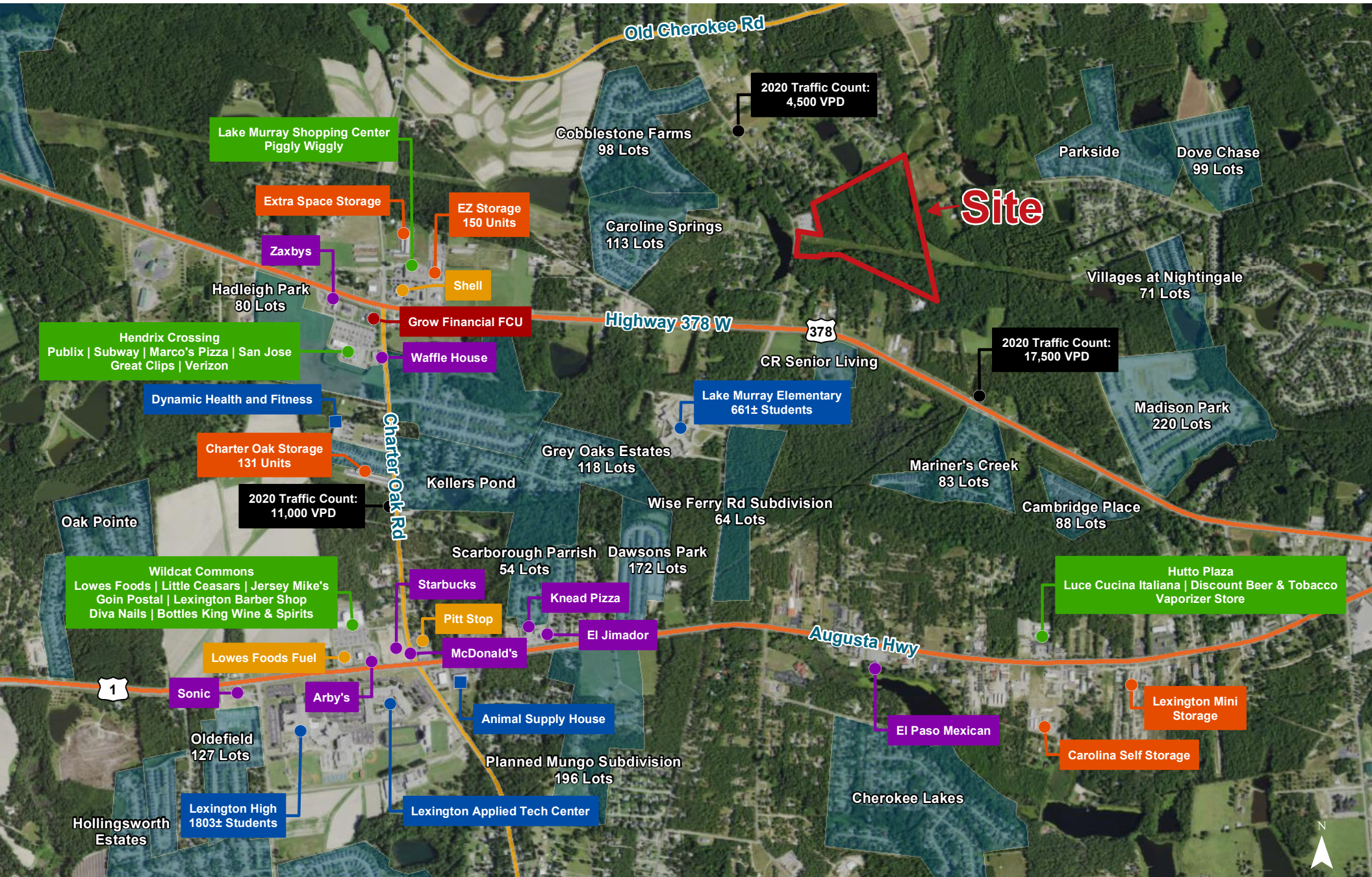
Cam Kreps
803.744.9832
ckreps@naicolumbia.com

NAIColumbia

THE INFORMATION CONTAINED HEREIN HAS BEEN GIVEN TO US BY THE OWNER OF THE PROPERTY OR OTHER SOURCES WE DEEM RELIABLE. WE HAVE NO REASON TO DOUBT ITS ACCURACY, BUT WE DO NOT GUARANTEE IT. ALL INFORMATION SHOULD BE VERIFIED PRIOR TO PURCHASE OR LEASE.

- For Sale: ±41.89 acres
- Zoned for highly desirable Lexington County School District 1
- Zoning: ID and RD in unincorporated Lexington County
- Less than ¼-mile to Highway 378
- Less than 5-minute drive to Main Street in Lexington
- Water located on Wise Ferry Road
- Sale Price: \$789,000 (\$18,835/Acre)





Map Updated: Thursday, March 4, 2021. This information submitted is not guaranteed. Although obtained from reliable sources, all information should be confirmed prior to use or reliance upon the information. This document may not be reproduced in whole or in part without the express written consent of NAI Columbia.

NAI Columbia

Demographic Profile

Demographic Profile

Wise Ferry Road & Highway 378 | Lexington, South Carolina

	1 Mile	3 Miles	5 Miles		1 Mile	3 Miles	5 Miles		1 Mile	3 Miles	5 Miles
Population				2020 Age Dist.				Median Household Income			
2010 Census	2,167	23,804	47,476	0 - 4	6.8%	5.7%	5.9%	2020 Estimate	\$85,624	\$83,981	\$79,403
2020 Estimate	3,288	30,039	59,371	5 - 9	7.3%	6.3%	6.3%	2025 Projection	\$92,783	\$89,111	\$85,122
2025 Projection	3,700	33,278	65,225	10 - 14	7.4%	6.8%	6.6%				
% Chg. 2020-2025	12.5%	10.8%	9.9%	15 - 19	7.4%	6.8%	6.5%	Average Household Income			
				20 - 24	6.1%	5.9%	6.1%	2020 Estimate	\$102,746	\$103,938	\$99,860
Households				25 - 34	12.1%	12.0%	12.9%	2025 Projection	\$115,770	\$114,587	\$110,815
2010 Census	869	8,589	18,114	35 - 44	14.1%	12.6%	12.9%				
2020 Estimate	1,292	10,818	22,464	45 - 54	15.5%	15.0%	14.6%	Per Capita Household Income			
2025 Projection	1,448	11,979	24,621	55 - 64	11.2%	13.3%	13.3%	2020 Estimate	\$38,459	\$38,685	\$37,757
				65 - 74	7.5%	9.2%	9.0%	2025 Projection	\$43,237	\$42,615	\$41,794
Families				75 - 84	3.3%	4.3%	4.0%				
2010 Census	652	6,275	13,008	85+	1.2%	1.9%	1.6%	2020 Household Income Dist.			
2020 Estimate	959	7,801	15,929					Less than \$15,000	1.9%	3.8%	5.4%
2025 Projection	1,071	8,608	17,399	Median Age				\$15,000 - \$24,999	5.0%	5.0%	5.1%
				2010 Census	35.6	38.3	37.7	\$25,000 - \$34,999	5.6%	6.8%	7.3%
2020 Housing Data				2020 Estimate	37.1	40.2	39.2	\$35,000 - \$49,999	11.2%	10.7%	10.7%
Owner Occ. Housing Units	1,111	8,942	17,580	2025 Projection	37.7	39.7	39.0	\$50,000 - \$74,999	17.4%	17.2%	18.4%
Renter Occ. Housing Units	181	1,876	4,885					\$75,000 - \$99,999	17.5%	15.0%	14.2%
				Average Household Size				\$100,000 - \$149,999	25.4%	24.0%	22.5%
2020 Business Data				2010 Census	2.49	2.65	2.55	\$150,000 - \$199,999	8.3%	9.2%	8.7%
Total Businesses:	555	8,017	22,872	2020 Estimate	2.54	2.68	2.58	\$200,000 and Up	7.7%	8.3%	7.8%
Total Employees:	3,288	30,039	59,371	2025 Projection	2.55	2.69	2.59				