

115

SANSOME



CONTACTS:

MICHAEL DEMARIA

+1 415 395 7248

michael.demaria@am.jll.com

RE License #01366535

MATTHEW SHEWEY

+1 415 395 7255

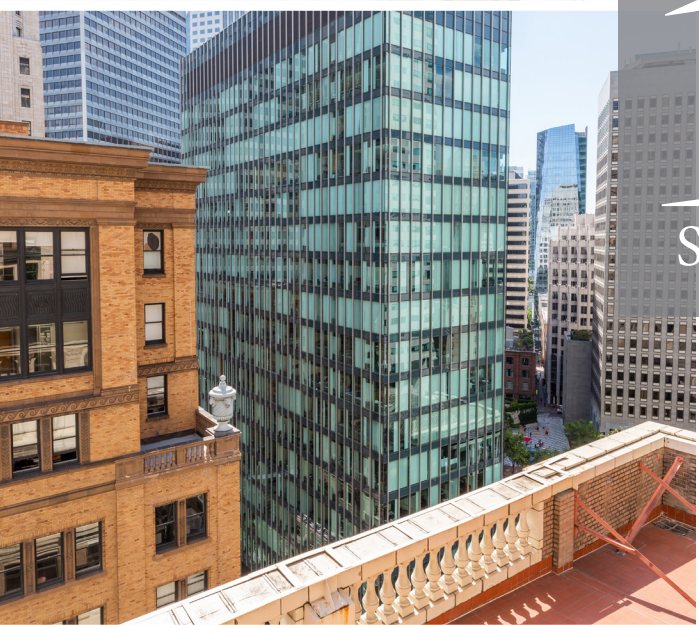
matthew.shewey@am.jll.com

RE License #01445125

 **VANBARTON**
GROUP

 **JLL**

Jones Lang Lasalle Brokerage, Inc.
Real estate License #: 01856260



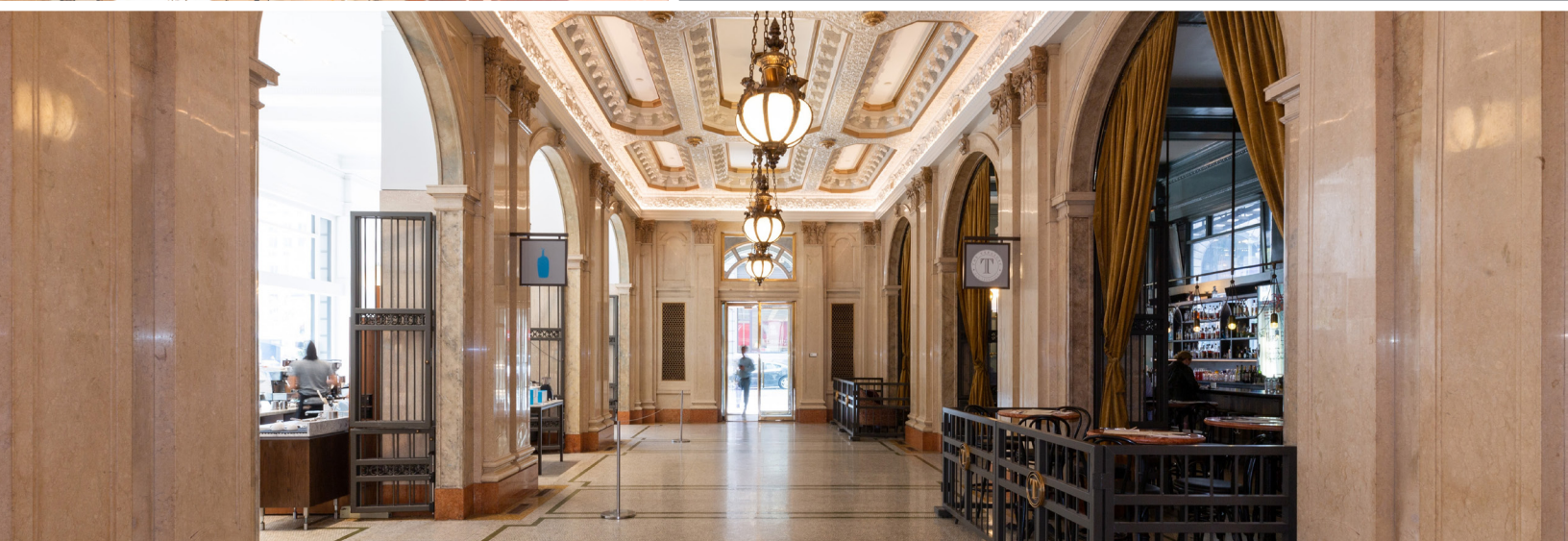
115 SANSOME

THE BUILDING

Built in 1912 to be the headquarters for Standard Oil Company, 115 Sansome is a San Francisco landmark and exquisite 19th century French Beaux-Arts masterpiece.

It has a total of 118,100 square feet of highly improved office and storage space with exceptional ground floor retail amenities including a sophisticated cocktail lounge and eatery, The Treasury and wildly-popular Blue Bottle Coffee, and the Shota, a Japanese sushi restaurant with seasonal items flown in from the Toyosu Fish Market in Tokyo.

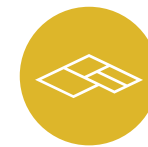
There are 14 stories with the penthouse space located on both the 14th & 15th floor. The property is located less than one block from Market Street, home to San Francisco's vast public transit network offering excellent connectivity to the entire Bay Area



PROPERTY

San Francisco's premier creative boutique building

FEATURES



Efficient & Flexible Floor Plates



Exceptional Location, Steps away from BART/Muni/Bus/Rail



Exposed concrete floor, ceilings, and brick



Operable copper-clad windows



Large secure bike storage



Showers on site



Storage Units



Cocktail lounge offering elevated drinks and new American nibbles



THE WING

Work & community space designed for women



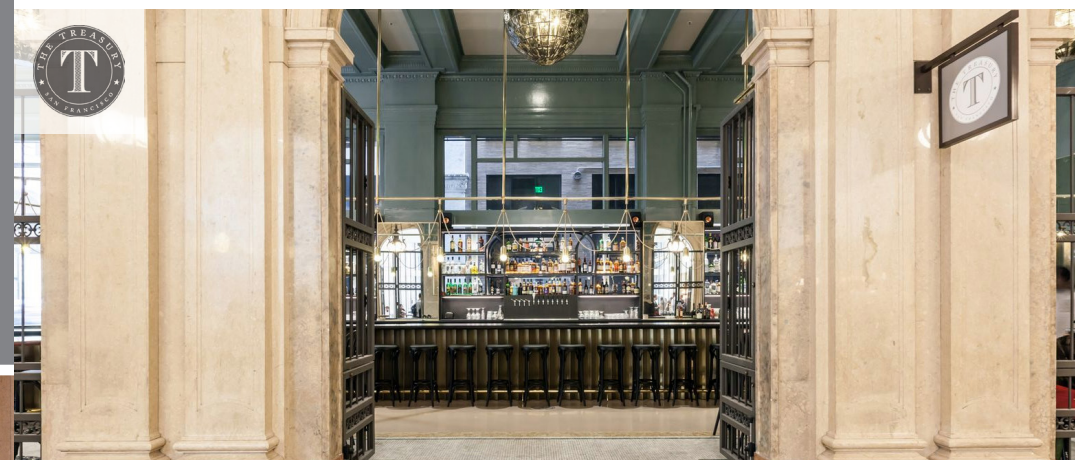
BLUE BOTTLE COFFEE

Specialty coffee roaster and brewer



THE SHOTA

Seasonally inspired Japanese tasting menu



THE LOCATION



SHOPPING

- 1 Crocker Galleria
- 2 Maiden Lane
- 3 Target Express
- 4 Tiffany & Co.
- 5 Gump's
- 6 Graff Diamonds
- 7 Shreve & Co.
- 8 Saks 5th Avenue
- 9 Wilkes Bashford

OUTDOORS

- 1 One Montgomery Terrace
- 2 McKesson Plaza
- 3 One Bush Plaza
- 4 Market Street Plaza
- 5 560 Mission Street Plaza
- 6 Union Square

FITNESS

- 1 24-Hour Fitness
- 2 Equinox
- 3 Rowclub
- 4 Satori Yoga Studio
- 5 Maiden Lane Studios
- 6 Maxwell Fitness
- 7 Crunch

DINING

- 1 Crocker Galleria (multiple)
- 2 Sam's Grill
- 3 Belden Place (multiple)
- 4 Yank Sing
- 5 The Salt House
- 6 Bob's Steak & Chophouse
- 7 Uno Dos Tacos
- 8 Hops & Hominy
- 9 Gitane
- 10 Gaspar Brasserie
- 11 Per Diem
- 12 Aquitaine

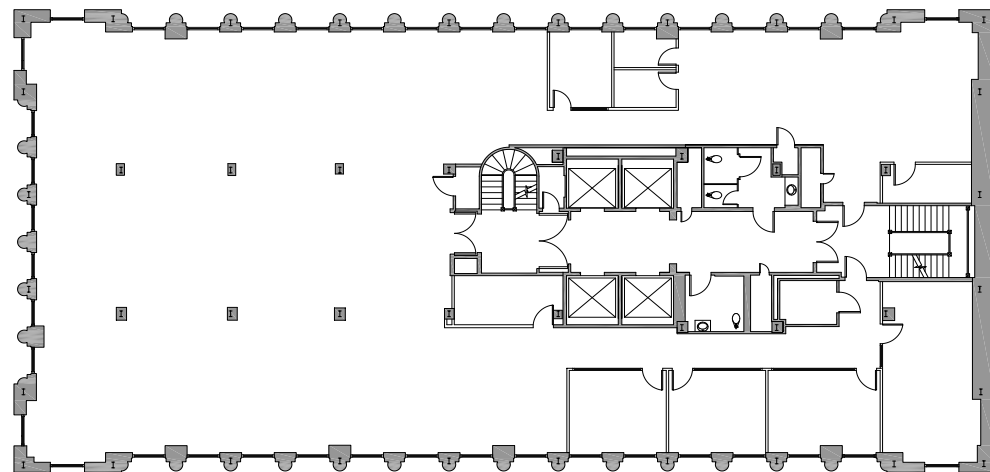
HOTELS

- 1 Ritz Carlton Residences
- 2 Palace Hotel
- 3 Loews Regency
- 4 Omni Hotel
- 5 Ritz-Carlton Hotel
- 6 Grand Hyatt

SUITE 900

8,973 RSF

- Creative Full Floor
- 2 Phone Rooms
- 1 small conference room
- 3 medium conference rooms
- 1 large conference room
- Large open kitchen
- Open area for +/- 65 workstations

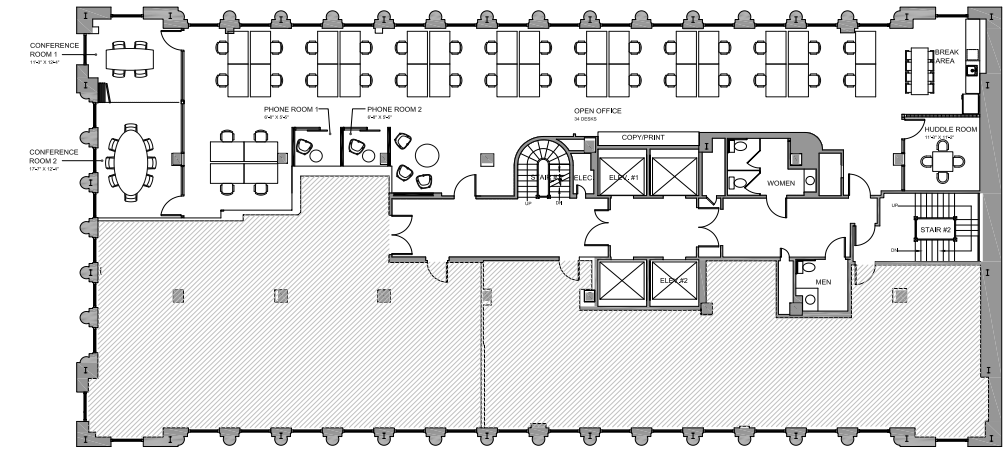


115
SANSOME

SUITE 1002

4,119 RSF

- Spec suite underway
- Delivering +/- 11/1/19



115
SANSOME

The Penthouse Suite

FLOOR 14
1,399 RSF

FLOOR 15
3,928 RSF

DECK
1,000 RSF

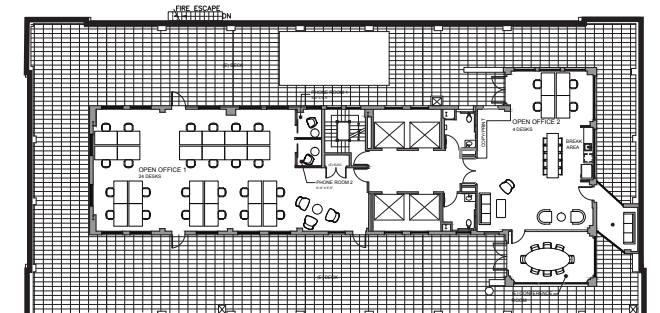
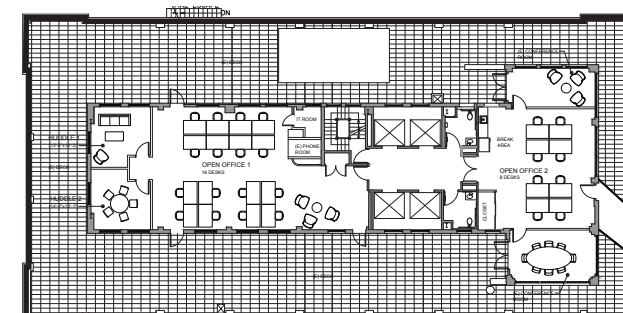
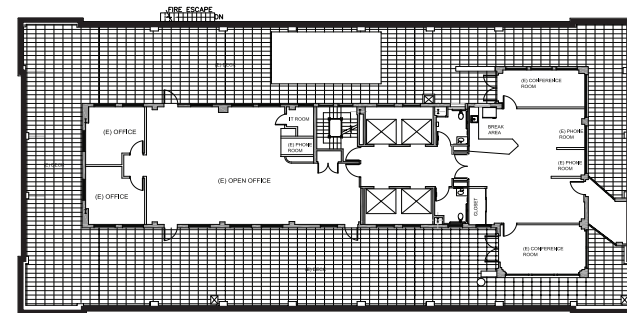
6,327 RSF
MUST LEASE TOGETHER

- Rare top floor penthouse with large private terrace
- Mix of conference, open, and office space
- Space for up to +/- 40 workstations
- Vacant now

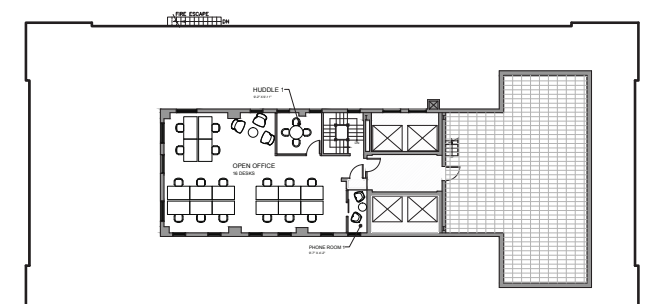
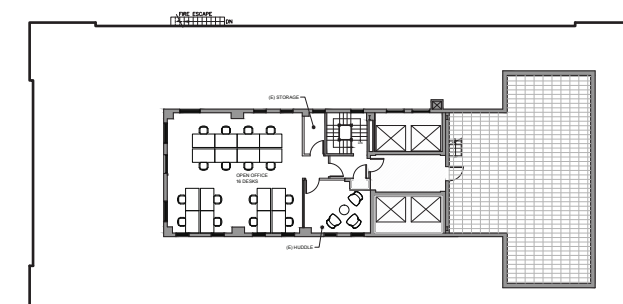
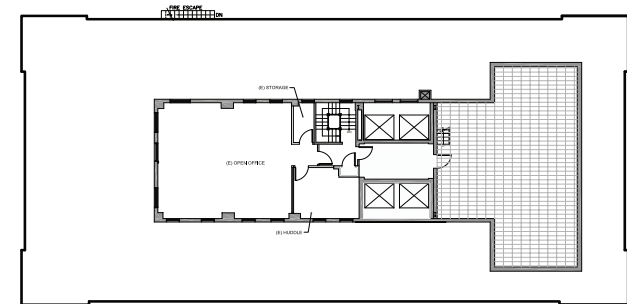


HYPOTHETICAL SPACE PLANS

FLOOR 14



FLOOR 15



115

SANSOME

CONTACTS:

MICHAEL DEMARIA

+1 415 395 7248

michael.demaria@am.jll.com

RE License #01366535

MATTHEW SHEWEY

+1 415 395 7255

matthew.shewey@am.jll.com

RE License #01445125

VANBARTON
GROUP

JLL

Jones Lang Lasalle Brokerage, Inc.
Real estate License #: 01856260