

FOR SALE

± 99 – 122 ACRES

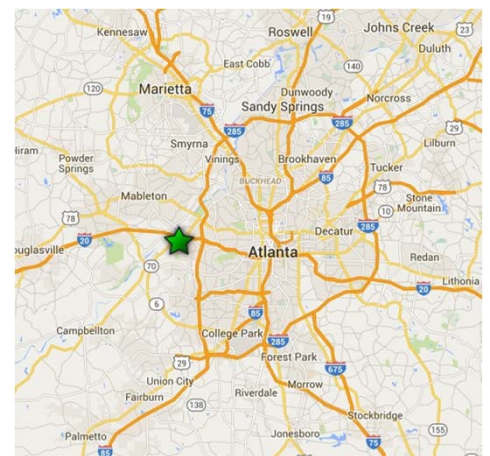
FULTON INDUSTRIAL BLVD. @ I-20

Atlanta, GA 30336



PRIME LOGISTICS LOCATION

- + ±85 M SF warehouse – 5 mile radius
- + 4 intermodal terminals – 20 minute drive
- + 3 points of ingress/egress
- + Immediate access to I-20 and I-285
- + 10 minute drive to I-75 and I-85
- + Potential retail/travel center frontage



CONTACT US

DAVID NIXON, SIOR

Senior Vice President
+1 404 923 1463
david.nixon@cbre.com
Lic. 122487

CBRE INC.

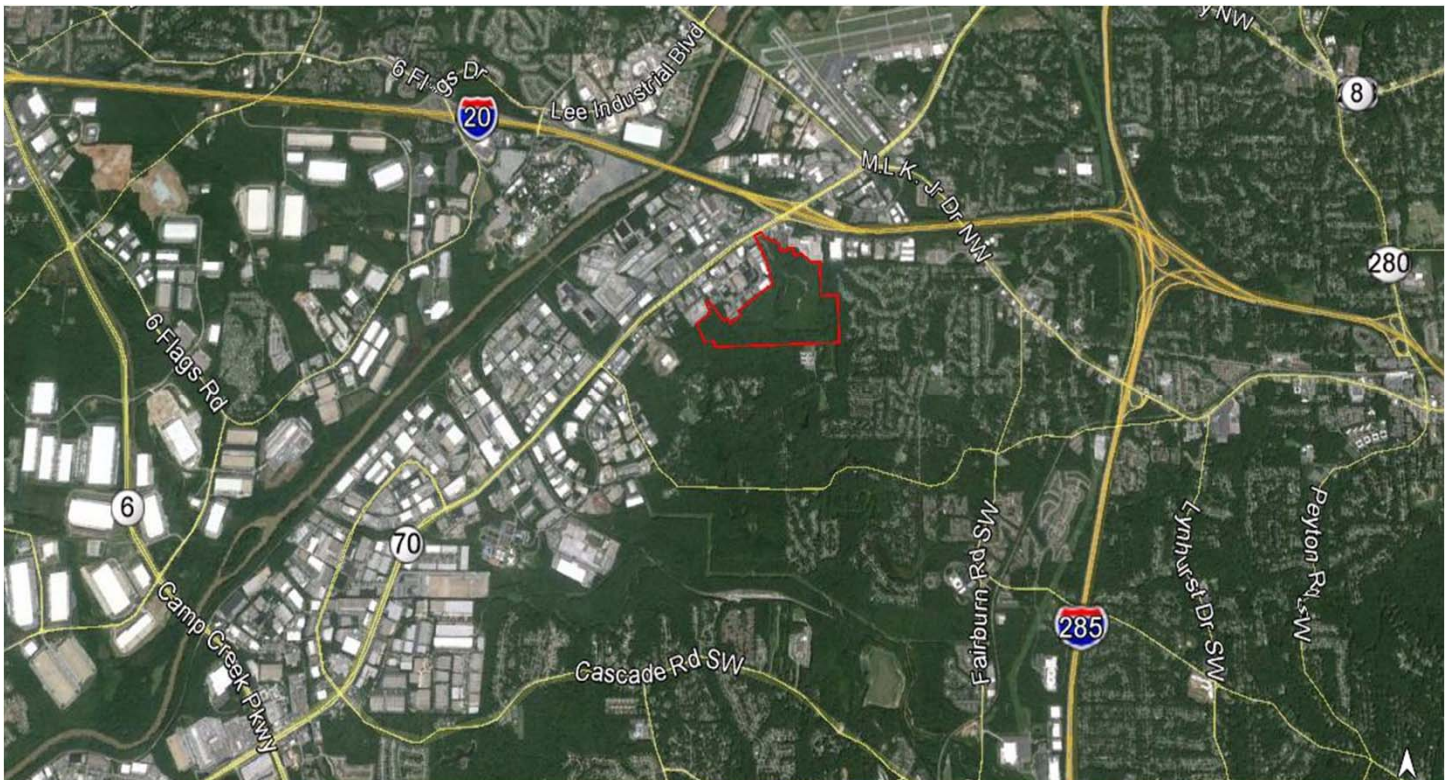
+1 404 504 7900
www.cbre.com/atlanta

www.cbre.com/atlanta

CBRE

± 99 – 122 ACRES
FULTON INDUSTRIAL BLVD. @ I-20
 Atlanta, GA 30336

PROPERTY FEATURES	
Total Site	± 122 acres Divisible
Zoning	Heavy Industrial
Ingress	Shirley Drive – 30' access easement Fulton Industrial Blvd. – 247' frontage Patton Drive – dedicated road
Access	¼ mile to I-20 2.2 miles to I-285
Port Access	Savannah – 258 miles Charleston – 329 miles
Intermodal Terminals	Norfolk Southern, Austell yard – 10 miles CSX/BNSF, Fairburn yard – 22 miles
Airport	Hartsfield – Jackson Atlanta International Airport – 14 miles



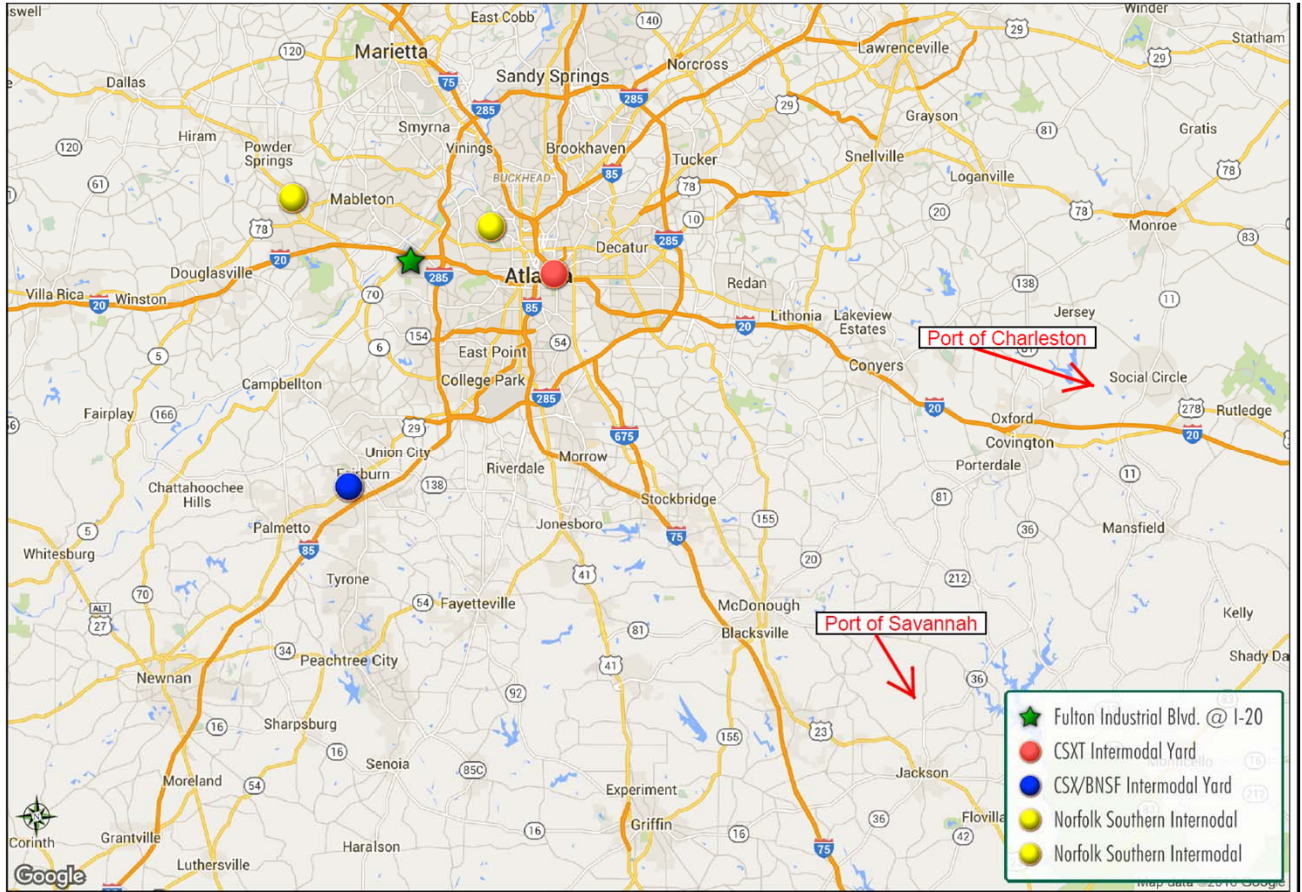
FOR SALE

FULTON INDUSTRIAL BLVD. @ I-20

Atlanta, GA 30336



INTERMODAL MAP



CONTACT US

DAVID NIXON, SIOR

Senior Vice President
+1 404 923 1463
david.nixon@cbre.com
Lic. 122487

CBRE INC.

+1 404 504 7900
www.cbre.com/atlanta

© 2016 CBRE, Inc. This information has been obtained from sources believed reliable. We have not verified it and make no guarantee, warranty or representation about it. Any projections, opinions, assumptions or estimates used are for example only and do not represent the current or future performance of the property. You and your advisors should conduct a careful, independent investigation of the property to determine to your satisfaction the suitability of the property for your needs. Photos herein are the property of their respective owners and use of these images without the express written consent of the owner is prohibited. CBRE and the CBRE logo are service marks of CBRE, Inc. and/or its affiliated or related companies in the United States and other countries. All other marks displayed on this document are the property of their respective owners.

www.cbre.com/atlanta

CBRE